

Professionally approved products.

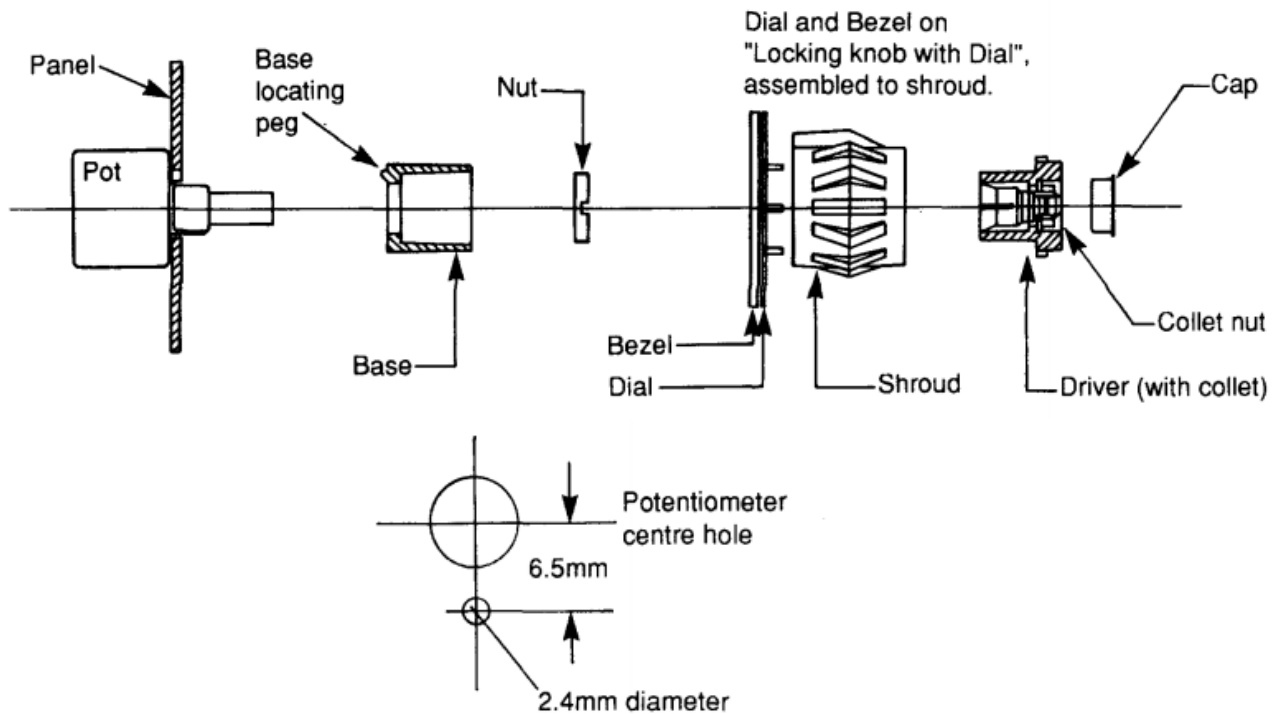
Datasheet

RS Chrome 24mm Potentiometer Knob with a Black Indicator, 0.25in Shaft

RS Stock 584-930



Dimensions: (mm)



Professionally approved products.

Datasheet

Specification

- Parts List
- Nut (3/8" UNEF slotted)
- Shroud or
- Shroud with dial and bezel (locking knob with dial RS stock No. 584-946)
- Driver (1/4" collet)
- Cap

Hole Drilling

Drill holes required for potentiometer, or rotary switch, and drill an additional 2.4mm diameter hole with a 6.5mm offset for the locking knob base peg.

1. Turn the (potentiometer/ switch) shaft, locating the "peg" on the rear of the base into the 2.4mm hole in the case front.
2. Push the base over the (potentiometer/switch) shaft, locating the "peg" on the rear of the base into the 2.4mm hole in the case front.
3. Place the 3/8" nut over the (potentiometer / switch) shaft with the slots facing outwards and tighten with a screwdriver or snipe – nose pliers. Do not over tighten.
4. Place the shroud over the base, aligning the pointer with the zero (or fully anti – clockwise) marker.
5. Slacken off the 1/4" collet nut on the driver by about one turn. This is best done with a 5mm nut spinner (RS Stock No. 544-730). Push into the shroud and tighten the collet nut.
6. Push the cap into the driver.