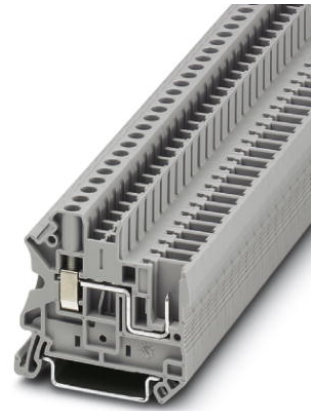



UT 4/ 1P

Order No.: 3045583



Feed-through terminal block, Connection method: Screw/plug-in connection, Cross section: 0.14 mm² - 6 mm², AWG: 26 - 10, Width: 6.2 mm, Color: gray, Mounting type: NS 35/7.5, NS 35/15

Commercial data

EAN	 4 046356 083096
Pack	50
Customs tariff	85369010
Gross weight in pieces	9.29 g
Country of Origin	DE
Catalog page information	Page 283 (CL1-2011)

Product notes

WEEE/RoHS-compliant since:
10/10/2005



Please note that the data given here has been taken from the online catalog. For comprehensive information and data, please refer to the user documentation at <http://www.download.phoenixcontact.com>. The General Terms and Conditions of Use apply to Internet downloads.

Technical data**General**

Number of levels	1
Number of connections	2
Color	gray
Insulating material	PA
Inflammability class according to UL 94	V0

Dimensions

Width	6.2 mm
Length	47.6 mm
Height NS 35/7,5	47.5 mm
Height NS 35/15	55 mm

Technical data

Maximum load current	32 A (with 6 mm ² conductor cross section)
Rated surge voltage	8 kV
Pollution degree	3
Surge voltage category	III
Insulating material group	I
Connection in acc. with standard	IEC 61984
Nominal current I _N	32 A
Nominal voltage U _N	800 V
Open side panel	ja
Insertion/withdrawal cycles mechanical	100
Checking the mechanical stability of terminal points (5 x conductor connection)	Test passed
Bending test rotation speed	10 rpm
Bending test turns	135
Bending test conductor cross section/weight	0.14 mm ² / 0.3 kg
	4 mm ² / 0.9 kg
	6 mm ² / 1.4 kg
Result of bending test	Test passed
Conductor cross section tensile test	0.14 mm ²
Tractive force setpoint	10 N
Conductor cross section tensile test	4 mm ²
Tractive force setpoint	60 N
Conductor cross section tensile test	6 mm ²
Tractive force setpoint	80 N
Tensile test result	Test passed
Tight fit on carrier	NS 35
Setpoint	1 N
Result of tight fit test	Test passed
Conductor cross section short circuit testing	4 mm ²

Short-time current	0.48 kA
Conductor cross section short circuit testing	6 mm ²
Short-time current	0.72 kA
Short circuit stability result	Test passed
Proof of thermal characteristics (needle flame) effective duration	30 s
Result of thermal test	Test passed
Test specification, oscillation, broadband noise	DIN EN 50155 (VDE 0115-200):2008-03
Test spectrum	Service life test category 1, class B, on vehicle body
Test frequency	f ₁ = 5 Hz to f ₂ = 150 Hz
ASD level	0.02 g ² /Hz
Acceleration	0.8 g
Test duration per axis	5 h
Test directions	X-, Y- and Z-axis
Oscillation, broadband noise test result	Test passed
Test specification, shock test	DIN EN 50155 (VDE 0115-200):2008-03
Shock form	Half-sine
Acceleration	5 g
Shock duration	30 ms
Number of shocks per direction	3
Test directions	X-, Y- and Z-axis (pos. and neg.)
Shock test result	Test passed
Temperature index, insulating material (DIN EN 60216-1 (VDE 0304-21))	120 °C
Connection data	
Conductor cross section solid min.	0.14 mm ²
Conductor cross section solid max.	6 mm ²
Conductor cross section AWG/kcmil min.	26
Conductor cross section AWG/kcmil max	10
Conductor cross section stranded min.	0.14 mm ²
Conductor cross section stranded max.	6 mm ²
Min. AWG conductor cross section, stranded	26
Max. AWG conductor cross section, stranded	10
Conductor cross section stranded, with ferrule without plastic sleeve min.	0.14 mm ²

Conductor cross section stranded, with ferrule without plastic sleeve max.	4 mm ²
Conductor cross section stranded, with ferrule with plastic sleeve min.	0.14 mm ²
Conductor cross section stranded, with ferrule with plastic sleeve max.	4 mm ²
2 conductors with same cross section, solid min.	0.14 mm ²
2 conductors with same cross section, solid max.	1.5 mm ²
2 conductors with same cross section, stranded min.	0.14 mm ²
2 conductors with same cross section, stranded max.	1.5 mm ²
2 conductors with same cross section, stranded, TWIN ferrules with plastic sleeve, min.	0.5 mm ²
2 conductors with same cross section, stranded, TWIN ferrules with plastic sleeve, max.	2.5 mm ²
2 conductors with same cross section, stranded, ferrules without plastic sleeve, min.	0.14 mm ²
2 conductors with same cross section, stranded, ferrules without plastic sleeve, max.	1.5 mm ²
Connection method	Screw/plug-in connection
Stripping length	9 mm
Internal cylindrical gage	A4
Screw thread	M3
Tightening torque, min	0.6 Nm
Tightening torque max	0.8 Nm

Certificates



Certification

CSA, cULus Recognized, GOST

Certifications applied for:

Certification Ex:

Accessories

Item	Designation	Description
------	-------------	-------------

Assembly

3047167	ATP-UT	Partition plate, Length: 50 mm, Width: 2.2 mm, Height: 48 mm, Color: gray
3022218	CLIPFIX 35	Snap-on end bracket, for 35 mm NS 35/7.5 or NS 35/15 DIN rail, can be fitted with Zack strip ZB 8 and ZB 8/27, terminal strip marker KLM 2 and KLM, width: 9.5 mm, color: gray
3022276	CLIPFIX 35-5	Quick mounting end clamp for NS 35/7,5 DIN rail or NS 35/15 DIN rail, can be fitted with ZB 5 and ZBF 5 zack marker strip, KLM 2, KLM3, and KML3L terminal strip marker, parking option for FBS...5, FBS...6, KSS 5, KSS 6, width: 5.15 mm, color: gray
3047154	D-UT 2,5/1P	End cover, Length: 47.6 mm, Width: 2.2 mm, Height: 48.4 mm, Color: gray
3036738	DP PS-6	Spacer plate, Color: red
0801704	NS 35/ 7,5 AL UNPERF 2000MM	DIN rail, material: Aluminum, unperforated, height 7.5 mm, width 35 mm, length: 2 m
1206560	NS 35/ 7,5 CAP	DIN rail end piece, for DIN rail NS 35/7.5
0801762	NS 35/ 7,5 CU UNPERF 2000MM	DIN rail, material: Copper, unperforated, height 7.5 mm, width 35 mm, length: 2 m
0801733	NS 35/ 7,5 PERF 2000MM	DIN rail, material: steel galvanized and passivated with a thick layer, perforated, height 7.5 mm, width 35 mm, length: 2000 mm
0801681	NS 35/ 7,5 UNPERF 2000MM	DIN rail, material: Steel, unperforated, height 7.5 mm, width 35 mm, length: 2 m
1204119	NS 35/ 7,5 WH PERF 2000MM	DIN rail 35 mm (NS 35)
1204122	NS 35/ 7,5 WH UNPERF 2000MM	DIN rail 35 mm (NS 35)
1206421	NS 35/ 7,5 ZN PERF 2000MM	DIN rail, material: Galvanized, perforated, height 7.5 mm, width 35 mm, length: 2 m
1206434	NS 35/ 7,5 ZN UNPERF 2000MM	DIN rail, material: Galvanized, unperforated, height 7.5 mm, width 35 mm, length: 2 m
1201756	NS 35/15 AL UNPERF 2000MM	DIN rail, deep drawn, high profile, unperforated, 1.5 mm thick, material: aluminum, height 15 mm, width 35 mm, length 2000 mm
1206573	NS 35/15 CAP	DIN rail end piece, for DIN rail NS 35/15
1201895	NS 35/15 CU UNPERF 2000MM	DIN rail, material: Copper, unperforated, 1.5 mm thick, height 15 mm, width 35 mm, length: 2 m
1201730	NS 35/15 PERF 2000MM	DIN rail, material: steel galvanized and passivated with a thick layer, perforated, height 15 mm, width 35 mm, length: 2000 mm
1201714	NS 35/15 UNPERF 2000MM	DIN rail, material: Steel, unperforated, height 15 mm, width 35 mm, length: 2 m
0806602	NS 35/15 WH PERF 2000MM	DIN rail 35 mm (NS 35)

1204135	NS 35/15 WH UNPERF 2000MM	DIN rail 35 mm (NS 35)
1206599	NS 35/15 ZN PERF 2000MM	DIN rail, material: Galvanized, perforated, height 15 mm, width 35 mm, length: 2 m
1206586	NS 35/15 ZN UNPERF 2000MM	DIN rail, material: Galvanized, unperforated, height 15 mm, width 35 mm, length: 2 m
1201798	NS 35/15-2,3 UNPERF 2000MM	DIN rail, material: Steel, unperforated, 2.3 mm thick, height 15 mm, width 35 mm, length: 2 m

Bridges

3030336	FBS 2-6	Plug-in bridge, Number of positions: 2, Color: red
3030242	FBS 3-6	Plug-in bridge, Number of positions: 3, Color: red
3030255	FBS 4-6	Plug-in bridge, Number of positions: 4, Color: red
3030349	FBS 5-6	Plug-in bridge, Number of positions: 5, Color: red
3030271	FBS 10-6	Plug-in bridge, Number of positions: 10, Color: red
3030365	FBS 20-6	Plug-in bridge, Number of positions: 20, Color: red
3032224	FBS 50-6	Plug-in bridge, Number of positions: 50, Color: red

General

0800886	E/NS 35 N	End clamp, width: 9.5 mm, color: gray
3060458	UT 4/ 1P-F	Screw flange, for screwing COMBI plugs, with the same structure and pitch as the relevant COMBI terminal blocks

Marking

3040588	PC	Keying star, Length: 3 mm, Width: 3 mm, Height: 6 mm, Color: red
0818085	UC-TM 6	Marker for terminal blocks, Sheet, white, Unlabeled, Can be labeled with: BLUEMARK CLED, Bluemark, Plotter, Mounting type: Snap into tall marker groove, For terminal block width: 6.2 mm, Lettering field: 5.6 x 10.5 mm
0824589	UC-TM 6 CUS	Marker for terminal blocks, Can be ordered: By sheet, white, Labeled according to customer specifications, Mounting type: Snap into tall marker groove, For terminal block width: 6.2 mm, Lettering field: 5.6 x 10.5 mm
0828736	UCT-TM 6	Marker for terminal blocks, Sheet, white, Unlabeled, Can be labeled with: Thermomark C+, Thermomark C, BLUEMARK CLED, Bluemark, Mounting type: Snap into tall marker groove, For terminal block width: 6.2 mm, Lettering field: 5.6 x 10.5 mm
0829602	UCT-TM 6 CUS	Marker for terminal blocks, Can be ordered: By sheet, white, Labeled according to customer specifications, Mounting type: Snap into tall marker groove, For terminal block width: 6.2 mm, Lettering field: 5.6 x 10.5 mm
0811228	X-PEN 0,35	Marker pen without ink cartridge, for manual labeling of markers, labeling extremely wipe-proof, line thickness 0.35 mm

0824992	ZB 6 CUS	Zack marker strip, Can be ordered: Strip, white, Labeled according to customer specifications, Mounting type: Snap into tall marker groove, For terminal block width: 6.2 mm, Lettering field: 6.15 x 10.5 mm
1051003	ZB 6:UNBEDRUCKT	Zack marker strip, Strip, white, Unlabeled, Can be labeled with: Plotter, Mounting type: Snap into tall marker groove, For terminal block width: 6.2 mm, Lettering field: 6.15 x 10.5 mm

Plug/Adapter

0201731	MPS-IH BK	Insulating sleeve, Color: black
0201689	MPS-IH BU	Insulating sleeve, Color: blue
0201702	MPS-IH GN	Insulating sleeve, Color: green
0201728	MPS-IH GY	Insulating sleeve, Color: gray
0201676	MPS-IH RD	Insulating sleeve, Color: red
0201663	MPS-IH WH	Insulating sleeve, Color: white
0201692	MPS-IH YE	Insulating sleeve, Color: yellow
0201744	MPS-MT	Test plugs
3032871	PAI-4-N GY	Test adapter, Color: gray
3030996	PS-6	Test adapter, Color: red
3038736	PS-6/2,3MM RD	Test plugs, Color: red

Tools

1205053	SZS 0,6X3,5	Actuation tool, for ST terminal blocks, insulated, also suitable for use as a bladed screwdriver, size: 0.6 x 3.5 x 100 mm, 2-component grip, with non-slip grip
---------	-------------	--

Additional products

Item	Designation	Description
Plug/Adapter		
3060115	UP 4/ 1	Connectors, Connection method: Screw connection, Number of positions: 1, Cross section: 0.14 mm ² - 6 mm ² , AWG: 24 - 10, Width: 6.2 mm, Height: 41.2 mm, Color: gray
3060021	UP 4/ 1-L	Connectors, Connection method: Screw connection, Number of positions: 1, Cross section: 0.14 mm ² - 6 mm ² , AWG: 24 - 10, Width: 6.2 mm, Height: 41.2 mm, Color: gray
3060034	UP 4/ 1-L BU	Connectors, Connection method: Screw connection, Number of positions: 1, Cross section: 0.14 mm ² - 6 mm ² , AWG: 24 - 10, Width: 6.2 mm, Height: 41.2 mm, Color: blue
3060047	UP 4/ 1-L GNYE	Connectors, Connection method: Screw connection, Number of positions: 1, Cross section: 0.14 mm ² - 6 mm ² , AWG: 24 - 10, Width: 6.2 mm, Height: 41.2 mm, Color: green-yellow

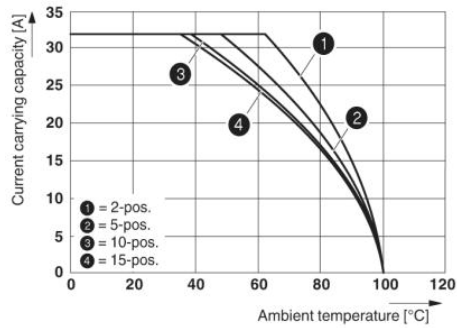
3060050	UP 4/ 1-M	Connectors, Connection method: Screw connection, Number of positions: 1, Cross section: 0.14 mm ² - 6 mm ² , AWG: 24 - 10, Width: 6.2 mm, Height: 41.2 mm, Color: gray
3060063	UP 4/ 1-M BU	Connectors, Connection method: Screw connection, Number of positions: 1, Cross section: 0.14 mm ² - 6 mm ² , AWG: 24 - 10, Width: 6.2 mm, Height: 41.2 mm, Color: blue
3060076	UP 4/ 1-M GNYE	Connectors, Connection method: Screw connection, Number of positions: 1, Cross section: 0.14 mm ² - 6 mm ² , AWG: 24 - 10, Width: 6.2 mm, Height: 41.2 mm, Color: green-yellow
3060089	UP 4/ 1-R	Connectors, Connection method: Screw connection, Number of positions: 1, Cross section: 0.14 mm ² - 6 mm ² , AWG: 24 - 10, Width: 6.2 mm, Height: 41.2 mm, Color: gray
3060092	UP 4/ 1-R BU	Connectors, Connection method: Screw connection, Number of positions: 1, Cross section: 0.14 mm ² - 6 mm ² , AWG: 24 - 10, Width: 6.2 mm, Height: 41.2 mm, Color: blue
3060102	UP 4/ 1-R GNYE	Connectors, Connection method: Screw connection, Number of positions: 1, Cross section: 0.14 mm ² - 6 mm ² , AWG: 24 - 10, Width: 6.2 mm, Height: 41.2 mm, Color: green-yellow
3060128	UP 4/ 2	Connectors, Connection method: Screw connection, Number of positions: 2, Cross section: 0.14 mm ² - 6 mm ² , AWG: 24 - 10, Width: 12.4 mm, Height: 41.2 mm, Color: gray
3060131	UP 4/ 3	Connectors, Connection method: Screw connection, Number of positions: 3, Cross section: 0.14 mm ² - 6 mm ² , AWG: 24 - 10, Width: 18.6 mm, Height: 41.2 mm, Color: gray
3060144	UP 4/ 4	Connectors, Connection method: Screw connection, Number of positions: 4, Cross section: 0.14 mm ² - 6 mm ² , AWG: 24 - 10, Width: 24.8 mm, Height: 41.2 mm, Color: gray
3060157	UP 4/ 5	Connectors, Connection method: Screw connection, Number of positions: 5, Cross section: 0.14 mm ² - 6 mm ² , AWG: 24 - 10, Width: 31 mm, Height: 41.2 mm, Color: gray
3060160	UP 4/ 6	Connectors, Connection method: Screw connection, Number of positions: 6, Cross section: 0.14 mm ² - 6 mm ² , AWG: 24 - 10, Width: 37.2 mm, Height: 41.2 mm, Color: gray
3060173	UP 4/ 7	Connectors, Connection method: Screw connection, Number of positions: 7, Cross section: 0.14 mm ² - 6 mm ² , AWG: 24 - 10, Width: 43.4 mm, Height: 41.2 mm, Color: gray
3060186	UP 4/ 8	Connectors, Connection method: Screw connection, Number of positions: 8, Cross section: 0.14 mm ² - 6 mm ² , AWG: 24 - 10, Width: 49.6 mm, Height: 41.2 mm, Color: gray
3060199	UP 4/ 9	Connectors, Connection method: Screw connection, Number of positions: 9, Cross section: 0.14 mm ² - 6 mm ² , AWG: 24 - 10, Width: 55.8 mm, Height: 41.2 mm, Color: gray
3060209	UP 4/10	Connectors, Connection method: Screw connection, Number of positions: 10, Cross section: 0.14 mm ² - 6 mm ² , AWG: 24 - 10, Width: 62 mm, Height: 41.2 mm, Color: gray
3060212	UP 4/11	Connectors, Connection method: Screw connection, Number of positions: 11, Cross section: 0.14 mm ² - 6 mm ² , AWG: 24 - 10, Width: 68.2 mm, Height: 41.2 mm, Color: gray

3060225	UP 4/12	Connectors, Connection method: Screw connection, Number of positions: 12, Cross section: 0.14 mm ² - 6 mm ² , AWG: 24 - 10, Width: 74.4 mm, Height: 41.2 mm, Color: gray
3060238	UP 4/13	Connectors, Connection method: Screw connection, Number of positions: 13, Cross section: 0.14 mm ² - 6 mm ² , AWG: 24 - 10, Width: 80.6 mm, Height: 41.2 mm, Color: gray
3060241	UP 4/14	Connectors, Connection method: Screw connection, Number of positions: 14, Cross section: 0.14 mm ² - 6 mm ² , AWG: 24 - 10, Width: 86.8 mm, Height: 41.2 mm, Color: gray
3060254	UP 4/15	Connectors, Connection method: Screw connection, Number of positions: 15, Cross section: 0.14 mm ² - 6 mm ² , AWG: 24 - 10, Width: 93 mm, Height: 41.2 mm, Color: gray
3045800	UPBV 4/ 1	Connectors, Connection method: Screw connection, Number of positions: 1, Cross section: 0.14 mm ² - 6 mm ² , AWG: 26 - 10, Width: 6.2 mm, Height: 48.5 mm, Color: gray
3045716	UPBV 4/ 1-L	Connectors, Connection method: Screw connection, Number of positions: 1, Cross section: 0.14 mm ² - 6 mm ² , AWG: 26 - 10, Width: 6.2 mm, Height: 48.5 mm, Color: gray
3045729	UPBV 4/ 1-L BU	Connectors, Connection method: Screw connection, Number of positions: 1, Cross section: 0.14 mm ² - 6 mm ² , AWG: 26 - 10, Width: 6.2 mm, Height: 48.5 mm, Color: blue
3045732	UPBV 4/ 1-L GNYE	Connectors, Connection method: Screw connection, Number of positions: 1, Cross section: 0.14 mm ² - 6 mm ² , AWG: 26 - 10, Width: 6.2 mm, Height: 48.5 mm, Color: green-yellow
3045745	UPBV 4/ 1-M	Connectors, Connection method: Screw connection, Number of positions: 1, Cross section: 0.14 mm ² - 6 mm ² , AWG: 26 - 10, Width: 6.2 mm, Height: 48.5 mm, Color: gray
3045758	UPBV 4/ 1-M BU	Connectors, Connection method: Screw connection, Number of positions: 1, Cross section: 0.14 mm ² - 6 mm ² , AWG: 26 - 10, Width: 6.2 mm, Height: 48.5 mm, Color: blue
3045761	UPBV 4/ 1-M GNYE	Connectors, Connection method: Screw connection, Number of positions: 1, Cross section: 0.14 mm ² - 6 mm ² , AWG: 26 - 10, Width: 6.2 mm, Height: 48.5 mm, Color: green-yellow
3045774	UPBV 4/ 1-R	Connectors, Connection method: Screw connection, Number of positions: 1, Cross section: 0.14 mm ² - 6 mm ² , AWG: 26 - 10, Width: 6.2 mm, Height: 48.5 mm, Color: gray
3045787	UPBV 4/ 1-R BU	Connectors, Connection method: Screw connection, Number of positions: 1, Cross section: 0.14 mm ² - 6 mm ² , AWG: 26 - 10, Width: 6.2 mm, Height: 48.5 mm, Color: blue
3045790	UPBV 4/ 1-R GNYE	Connectors, Connection method: Screw connection, Number of positions: 1, Cross section: 0.14 mm ² - 6 mm ² , AWG: 26 - 10, Width: 6.2 mm, Height: 48.5 mm, Color: green-yellow
3045813	UPBV 4/ 2	Connectors, Connection method: Screw connection, Number of positions: 2, Cross section: 0.14 mm ² - 6 mm ² , AWG: 26 - 10, Width: 12.4 mm, Height: 48.5 mm, Color: gray
3045826	UPBV 4/ 3	Connectors, Connection method: Screw connection, Number of positions: 3, Cross section: 0.14 mm ² - 6 mm ² , AWG: 26 - 10, Width: 18.6 mm, Height: 48.5 mm, Color: gray

3045839	UPBV 4/ 4	Connectors, Connection method: Screw connection, Number of positions: 4, Cross section: 0.14 mm ² - 6 mm ² , AWG: 26 - 10, Width: 24.8 mm, Height: 48.5 mm, Color: gray
3045842	UPBV 4/ 5	Connectors, Connection method: Screw connection, Number of positions: 5, Cross section: 0.14 mm ² - 6 mm ² , AWG: 26 - 10, Width: 31 mm, Height: 48.5 mm, Color: gray
3045855	UPBV 4/ 6	Connectors, Connection method: Screw connection, Number of positions: 6, Cross section: 0.14 mm ² - 6 mm ² , AWG: 26 - 10, Width: 37.2 mm, Height: 48.5 mm, Color: gray
3045868	UPBV 4/ 7	Connectors, Connection method: Screw connection, Number of positions: 7, Cross section: 0.14 mm ² - 6 mm ² , AWG: 26 - 10, Width: 43.4 mm, Height: 48.5 mm, Color: gray
3045871	UPBV 4/ 8	Connectors, Connection method: Screw connection, Number of positions: 8, Cross section: 0.14 mm ² - 6 mm ² , AWG: 26 - 10, Width: 49.6 mm, Height: 48.5 mm, Color: gray
3045884	UPBV 4/ 9	Connectors, Connection method: Screw connection, Number of positions: 9, Cross section: 0.14 mm ² - 6 mm ² , AWG: 26 - 10, Width: 55.8 mm, Height: 48.5 mm, Color: gray
3045897	UPBV 4/10	Connectors, Connection method: Screw connection, Number of positions: 10, Cross section: 0.14 mm ² - 6 mm ² , AWG: 26 - 10, Width: 62 mm, Height: 48.5 mm, Color: gray
3045907	UPBV 4/11	Connectors, Connection method: Screw connection, Number of positions: 11, Cross section: 0.14 mm ² - 6 mm ² , AWG: 26 - 10, Width: 68.2 mm, Height: 48.5 mm, Color: gray
3045910	UPBV 4/12	Connectors, Connection method: Screw connection, Number of positions: 12, Cross section: 0.14 mm ² - 6 mm ² , AWG: 26 - 10, Width: 74.4 mm, Height: 48.5 mm, Color: gray
3045923	UPBV 4/13	Connectors, Connection method: Screw connection, Number of positions: 13, Cross section: 0.14 mm ² - 6 mm ² , AWG: 26 - 10, Width: 80.6 mm, Height: 48.5 mm, Color: gray
3045936	UPBV 4/14	Connectors, Connection method: Screw connection, Number of positions: 14, Cross section: 0.14 mm ² - 6 mm ² , AWG: 26 - 10, Width: 86.8 mm, Height: 48.5 mm, Color: gray
3045949	UPBV 4/15	Connectors, Connection method: Screw connection, Number of positions: 15, Cross section: 0.14 mm ² - 6 mm ² , AWG: 26 - 10, Width: 93 mm, Height: 48.5 mm, Color: gray

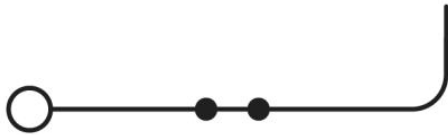
Drawings

Diagram



The figure shows the derating curve of the UT 4/1P... terminal block in connection with the UPVB 4 connector

Circuit diagram



Address

PHOENIX CONTACT Ltd
Halesfield 13
Telford / Shropshire / TF7 4PG, England
Phone 01952 681 700
Fax 01952 681 799
<http://www.phoenixcontact.co.uk>



Phoenix Contact Ltd.
Technical modifications reserved;