

General attributes

Approvals / Conformity

CE

Basic standard

cULus
IEC 60947-5-7
BWN PR 44
IEC 60947-5-2

Enclosure Type per IEC 60529

IP67

Polarity reversal protected

Yes

Power indicator

No

Protection Class

II

Short circuit protected

Yes

Electrical attributes

Connection type

Cable

Eff. operating current I_e

20 mA

Eff. operating voltage U_e DC

24.00 V

Electrical version

DC, direct current

Hysteresis H max.

0.3 mm

Limit frequency -3dB

500 Hz

Linearity error max.

±120 µm

Linear range SI max.

5.00 mm

Linear range SI min. [mm]

1.00 mm

Load capacitance max. (at U_e)

0.10 µF

Load resistance R_L min.

2,000 Ohm

No-load current max. I_o at U_e

20.0 mA

Operating voltage U_B max. DC [V]

30.00 V

Operating voltage U_B min. DC [V]

15.00 V

Output voltage at S_e

5.00 V

Output voltage at SI max.

10.00 V

Output voltage at SI min.

0.00 V

Rated frequency, AC

DC

Rated insulation voltage U_i

250 AC

Ripple max. (% of U_e)

15 %

Slope U

2.50 V/mm

Switching freq. f max. (at U_e)

1000 Hz

Switching function

Switching output

Voltage drop static max.

Voltage falling on approach

PNP / Analog+NO

1.5 V

Mechanical attributes

Adjustment indicator

No

Ambient temperature T_a max.

70 °C

Ambient temperature T_a min.

-10 °C

Cable diameter D max.

5.1 mm

Cable jacket material

PUR

Cable length

5.00 m

Conductor cross-section

0.25 mm²

Depth

76.5 mm

Diameter d1

M18x1.0

Housing material

Brass

Measuring speed max.

40.0 m/s

Mech. installation condition

Flush (shielded)

Number of conductors

7

Opt. working temperature max.

50 °C

Opt. working temperature min.

10 °C

Rated operating dist. S_e

3.00 mm

Repeat acc. R of end value max

3.0 %

Repeat accuracy per BWN

±8.0 µm

Response time

1.0 ms

Sensing face material

PBT

Surface protection

Nickel-plated

Temp. drift max. of span

±5.0 %

Tightening torque

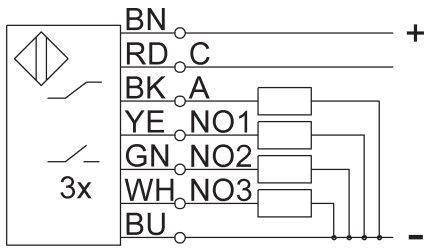
25 Nm / 35 Nm

Additional text

When used in Balluff clamping holders, U_a may be reduced by max. 10 %

Values referenced to axial approach of St 37 target. For other materials correction factors are applied.

Total of all output currents may not exceed 60 mA.



NO1/NO2/NO3 Switching outputs (Normally open)
C Control
A Analog output

