



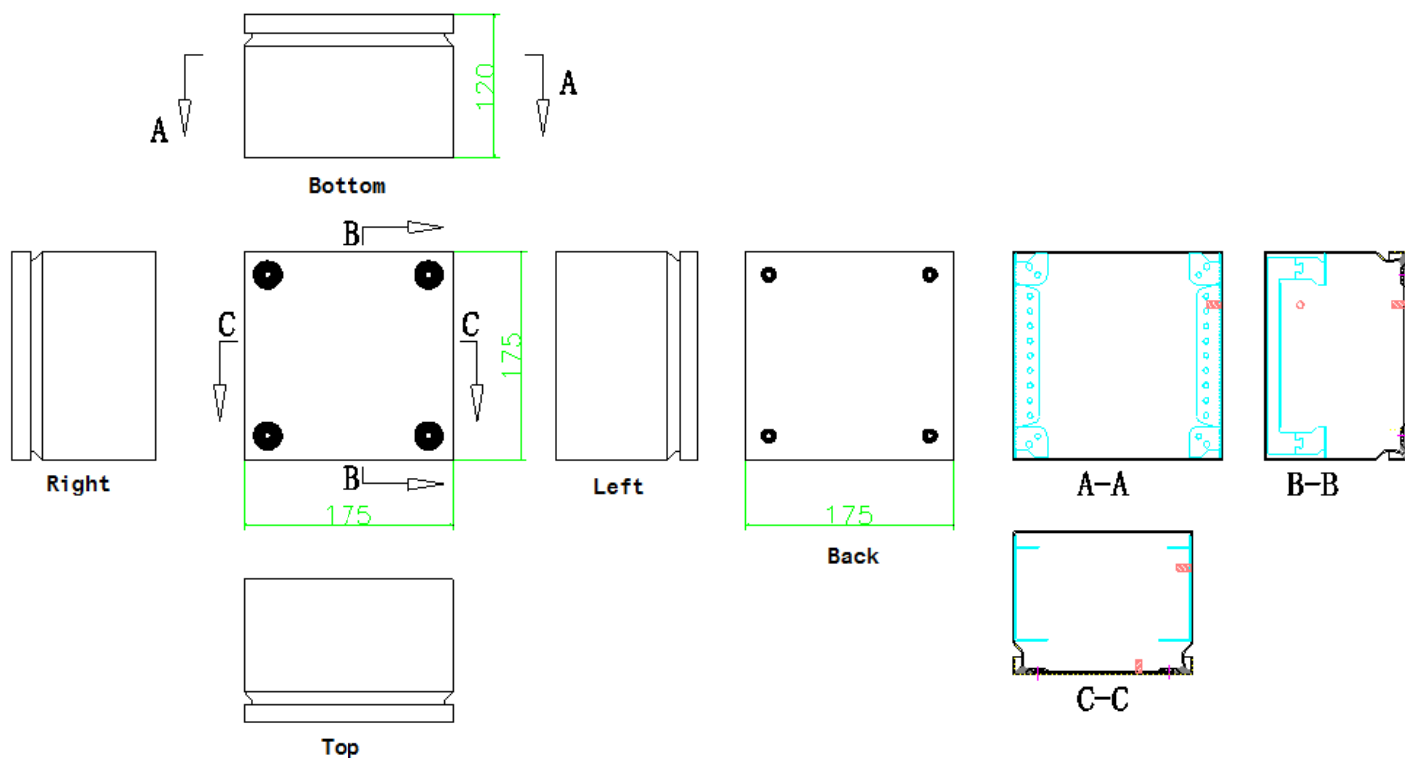
## Product Datasheet

ENGLISH

# S.S. IP66 Terminal Enclosure



### Drawings:





ENGLISH

**Package Contain:**

**S.S. IP66 Terminal Enclosure**

**S.S. IP66 Terminal Enclosures are designed for housing DIN rail terminals and accessories. Constructed from 1.2mm AISI 304 natural finish stainless steel and fitted with a black neoprene gasket these enclosures provide an IP66 rating.**

**Lids with black neoprene gasket and 4 x M6 captive hexagon headed screws**

**Operating temperature -20°C to +110°C**

**Multiple DIN rail fixing points, M5**

**External M6 earthing stud**

**Material 304 stainless steel**

**IP66 rating**

**Dimensions: 175 x 175 x 120mm**

**External Height: 175 mm**

**External Width: 175 mm**