


Ordering number C12763_FLARE-MINI-A

Family	Flare	FWHM	17+95 degrees
Type	Lens	Efficiency	95 %
LED	XP-E	cd/lm	1.600
Color	Clear	Gerber File	Available
Diameter	16 mm		
Height	8.6 mm		
Style	Round		
Optic Material	PMMA		
Holder Material	-		
Fastening	Glue		
Status	Ready		


Ordering number C12837_FLARE-MINI-A-PIN

Family	Flare	FWHM	17 + 95 degrees
Type	Lens	Efficiency	95 %
LED	XP-E	cd/lm	1.500
Color	Clear	Gerber File	Available
Diameter	16 mm		
Height	8.6 mm		
Style	Round		
Optic Material	PMMA		
Holder Material	-		
Fastening	Pin, glue		
Status	Ready		


Ordering number CA12764_FLARE-MINI-A

Family	Flare	FWHM	20+113 degrees
Type	Assembly	Efficiency	94 %
LED	XP-E	cd/lm	0.900
Color	Clear	Gerber File	Available
Diameter	16 mm		
Height	9.1 mm		
Style	Round		
Optic Material	PMMA		
Holder Material	-		
Fastening	Tape		
Status	Ready		


Ordering number CA12838_FLARE-MINI-A-PIN

Family	Flare	FWHM	20+113 degrees
Type	Assembly	Efficiency	94 %
LED	XP-E	cd/lm	0.900
Color	Clear	Gerber File	Available
Diameter	16 mm		
Height	9.1 mm		
Style	Round		
Optic Material	PMMA		
Holder Material	-		
Fastening	Pin, tape		
Status	Ready		



Ordering number	CA10932		
Description	1		
Family	Flare	FWHM	102+10 degrees
Type	Assembly	Efficiency	93 %
LED	XP-E	cd/lm	1.750
Color	Clear	Gerber File	Available
Diameter	29 x 22.8 mm		
Height	12.84 mm		
Style	Rectang		
Optic Material	PMMA		
Holder Material	-		
Fastening	-		
Status	Ready		

NOTE: The typical divergence will be changed by different color, chip size and chip position tolerance. The typical total divergence is the full angle measured where the luminous intensity is half of the peak value.



PRODUCT DATASHEET

Flare series

last update 2/4/2013

GENERAL INFORMATION

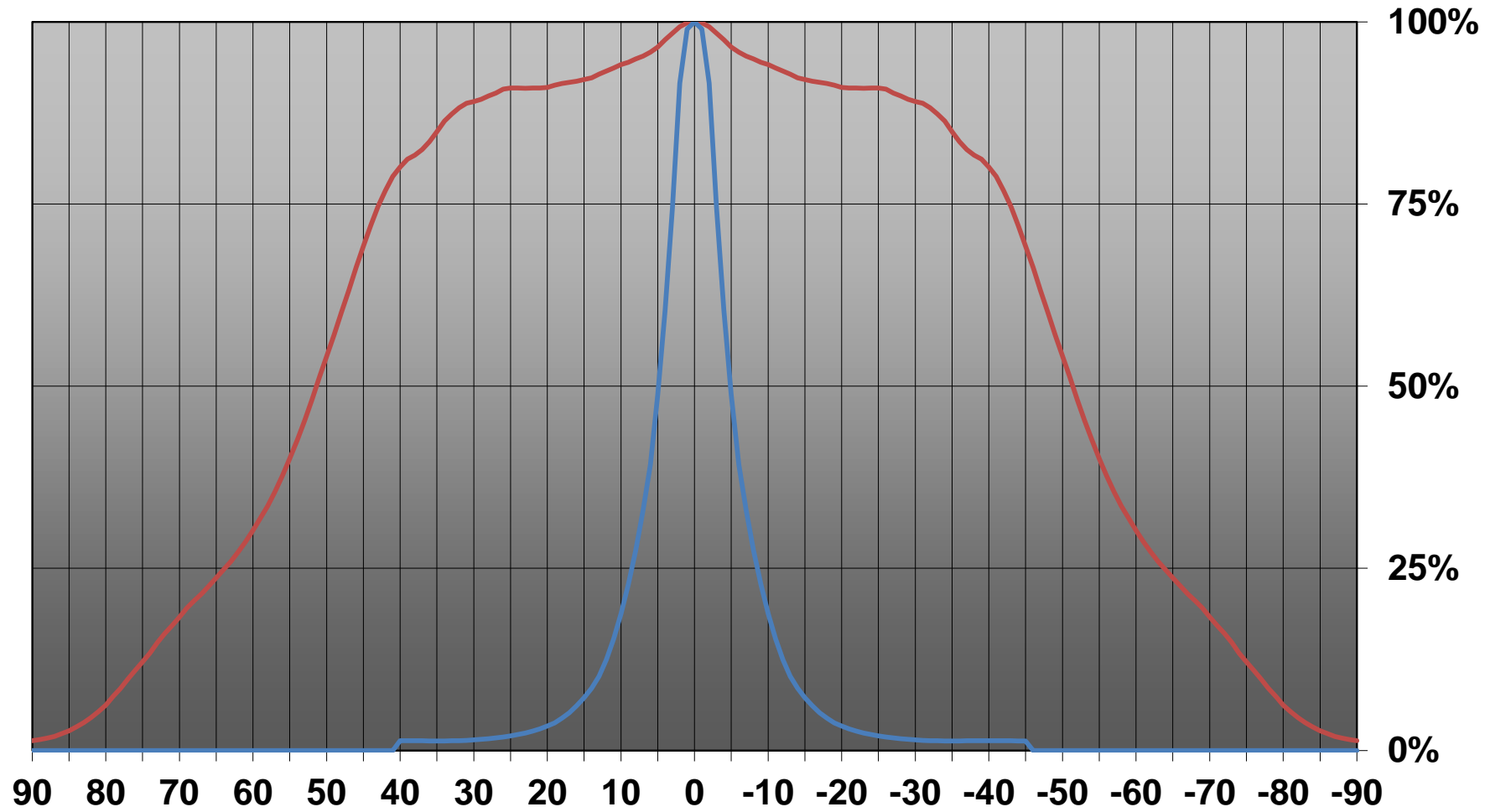
- Product series especially designed & optimized for XP-E series of LEDs.
- Special care taken to make light distribution as uniform as possible.
- Lens material optical grade PMMA with high UV and temperature resistance. Allows use of high current and temperature conditions.

Please find more information about used material from below:

http://ledil.fi/sites/default/files/Documents/Technical/Material/PMMA%20N%20UL94_Yellow%20Card.pdf

<http://ledil.fi/sites/default/files/Documents/Technical/Material/PMMA%20N%20PLEXIGLAS-Datasheet.pdf>

Relative intensity of CA10932_FLARE-B_(XP-E)



D

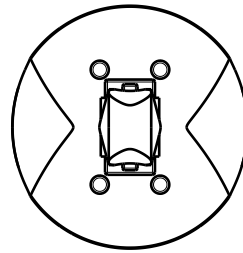
C

B

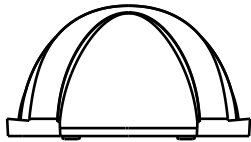
A

4

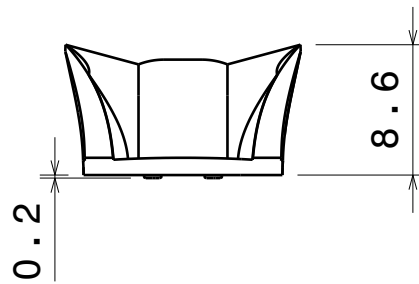
4



Bottom view



Right view



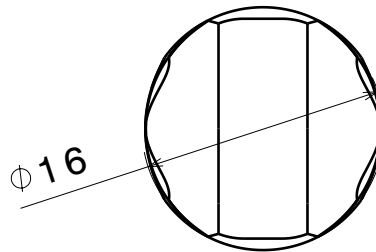
Front view

3

3

2

2



Top view

This drawing is our property.
It can't be reproduced
or communicated without
our written agreement.



Ledil Oy
Salorankatu 10
FIN 24240 SALO
Finland

DRAWING TITLE

Datasheet FLARE-MINI

DRAWN BY

as

DATE

1.8.2012

CHECKED BY

sn

DATE

1.8.2012

DESIGNED BY

pl

DATE

27.2.2012

SIZE

A4

PART NUMBER

SCALE

2:1

WEIGHT

REV

001

SHEET

1/1

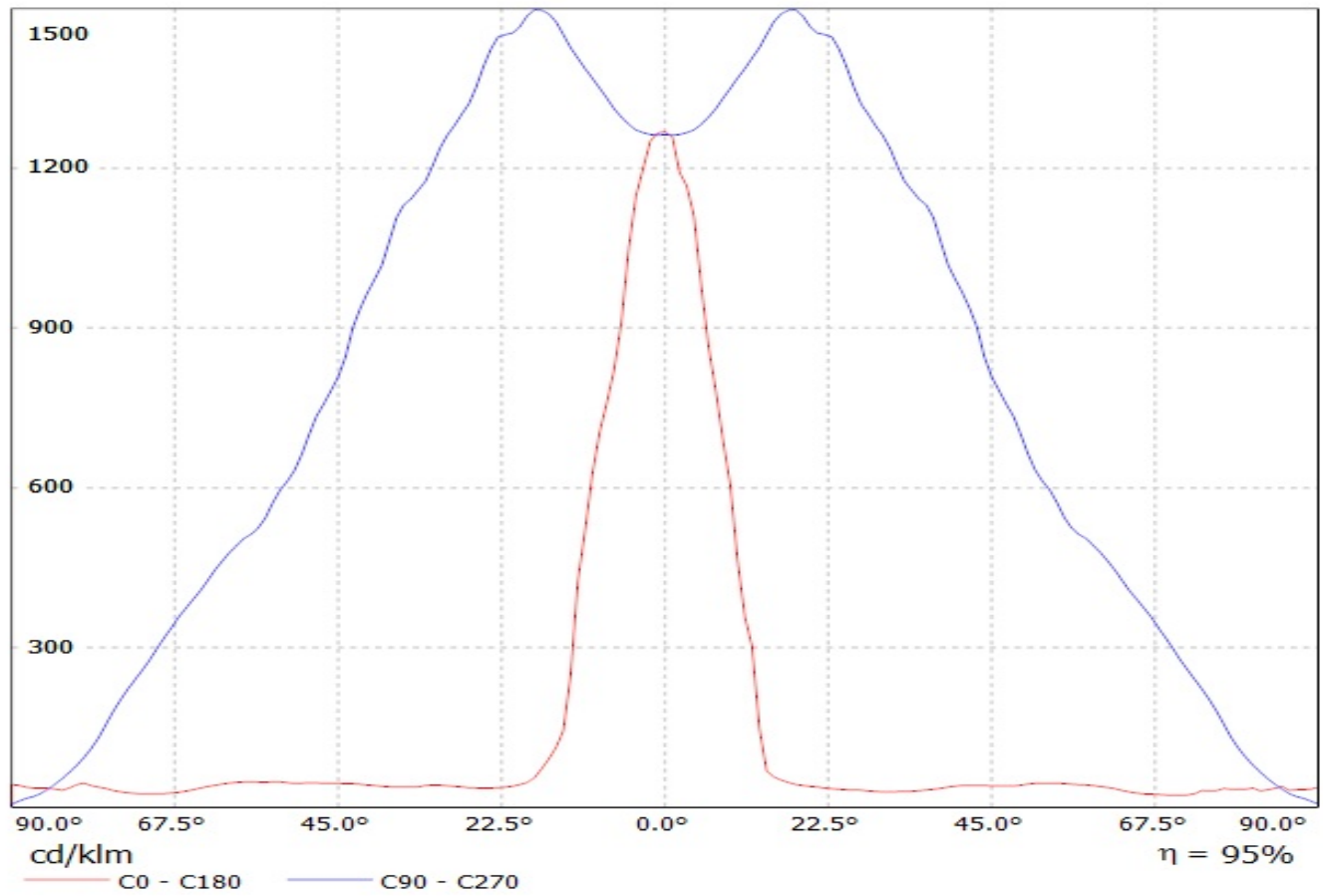
1

1

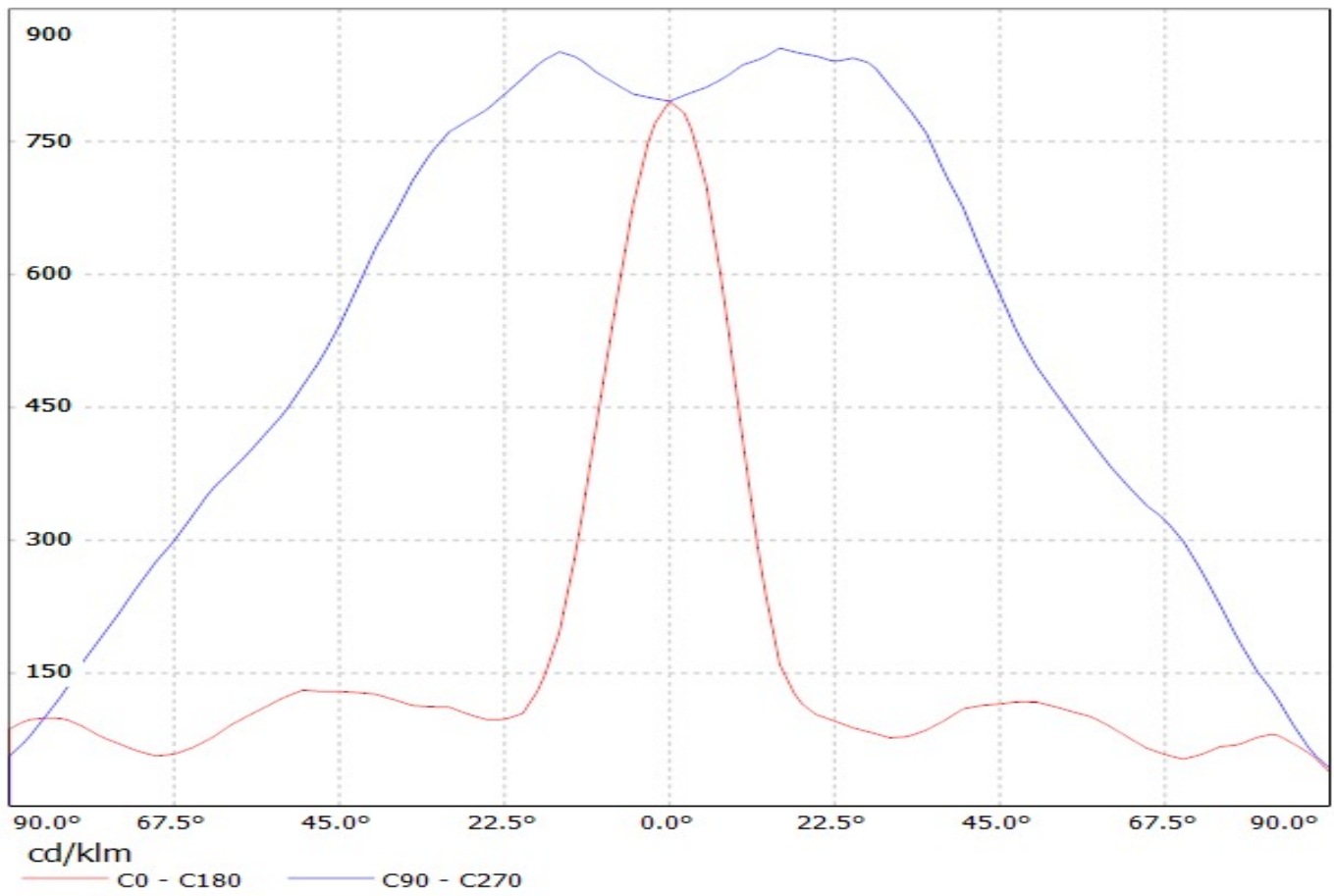
D

A

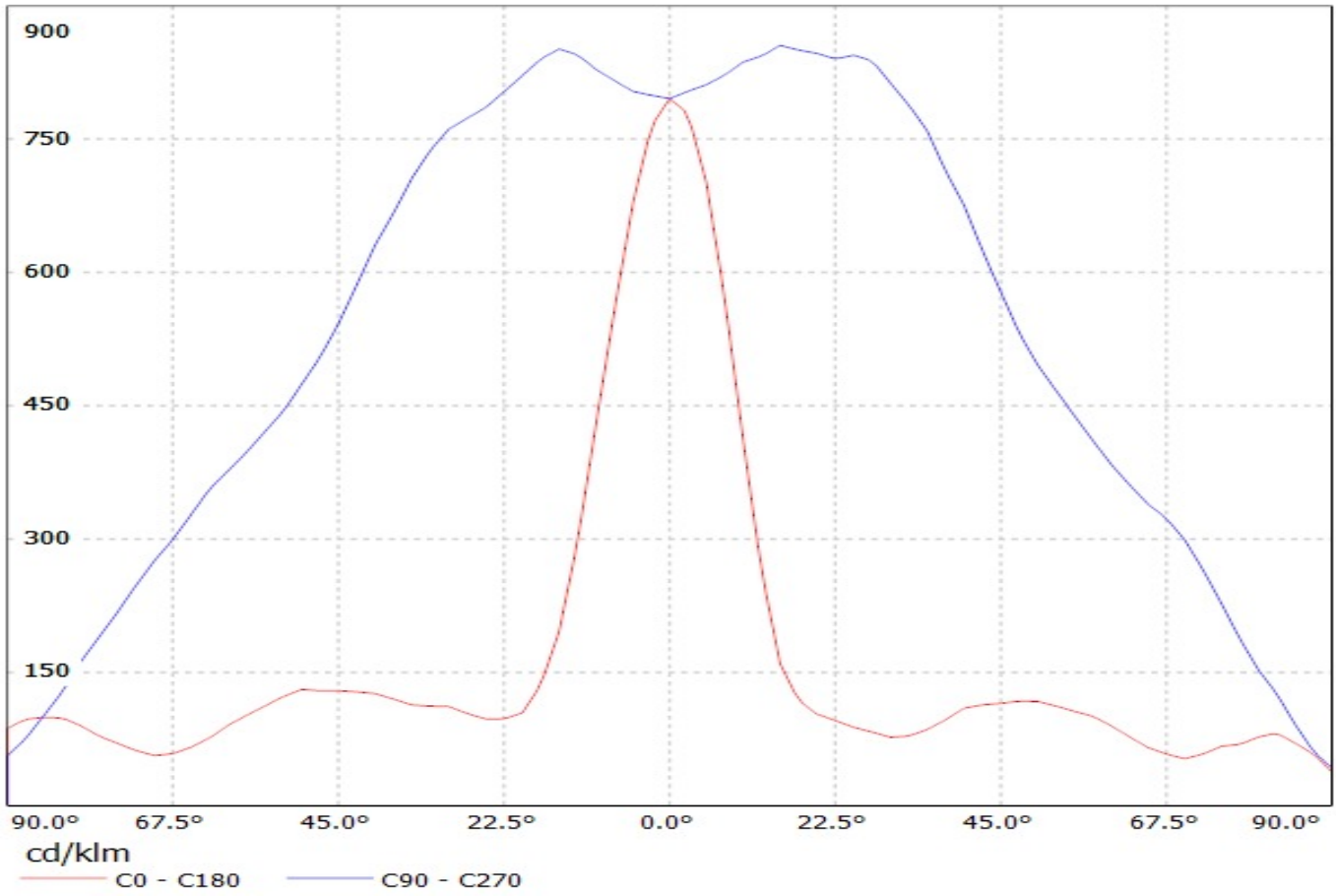
Luminaire: LEDIL OY C12763 & C12837_FLARE-MINI-A (XP-E) Efficiency=95%
Lamps: 1 x Cree XP-E (74lm@250mA)



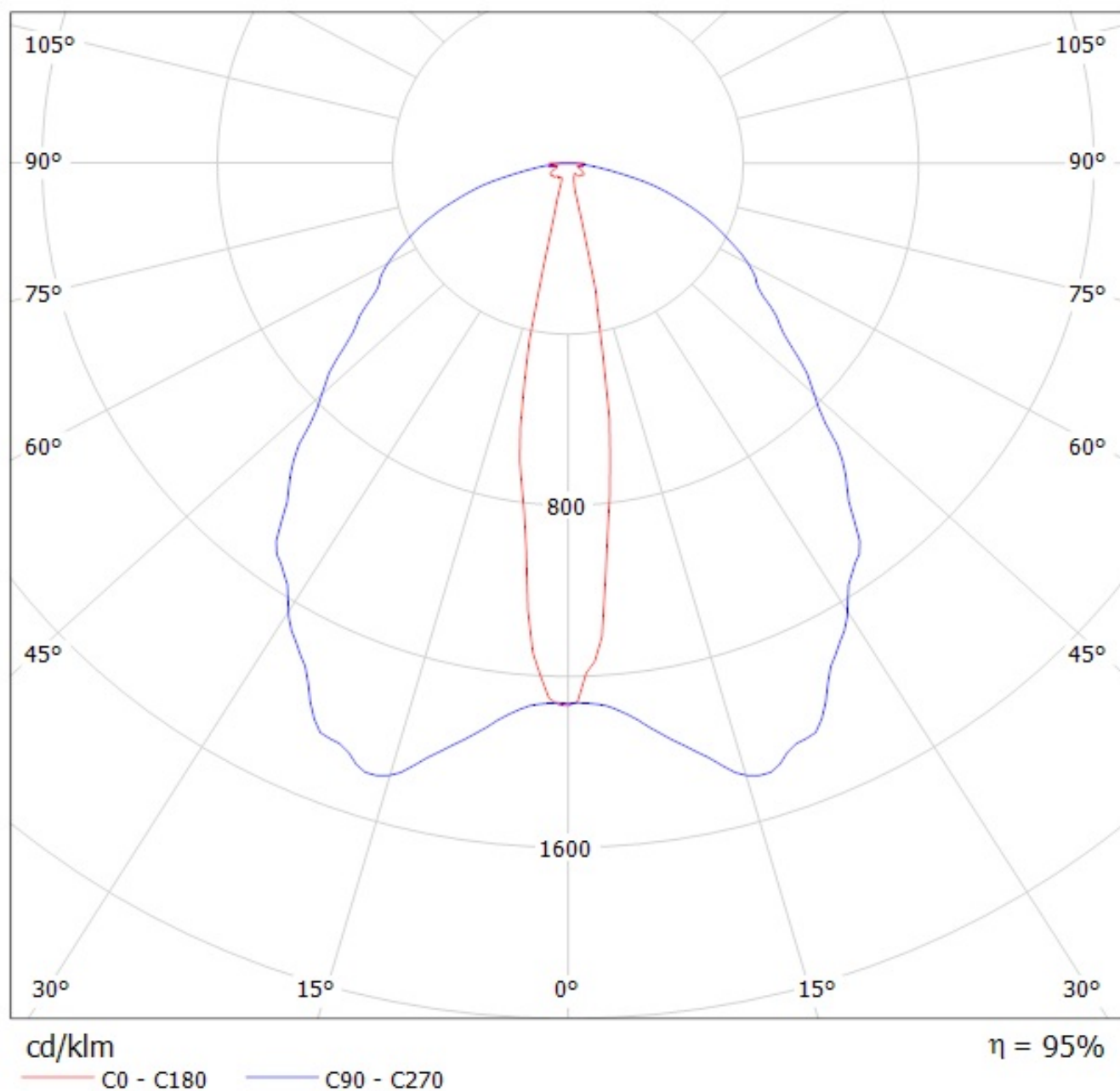
Luminaire: Ledil Oy CA12764&CA12838_FLARE-MINI-A (Cree XP-E 76lm @ 250mA) Efficiency=94%
Lamps: 1 x Cree XP-E 76lm @ 250mA



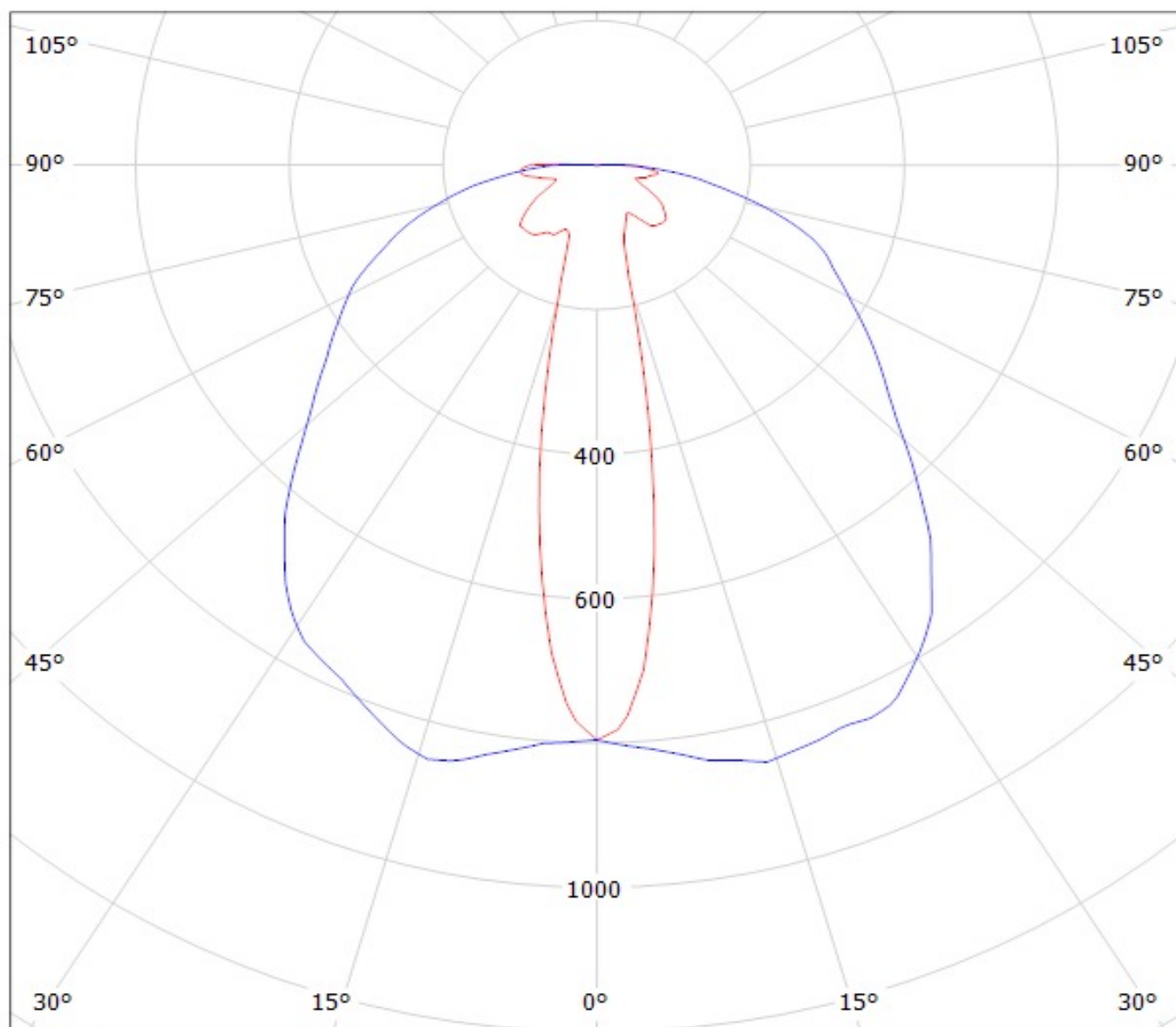
Luminaire: Ledil Oy CA12764&CA12838_FLARE-MINI-A (Cree XP-E 76lm @ 250mA) Efficiency=94%
Lamps: 1 x Cree XP-E 76lm @ 250mA



Luminaire: LEDIL OY C12763 & C12837_FLARE-MINI-A (XP-E) Efficiency=95%
Lamps: 1 x Cree XP-E (74lm@250mA)



Luminaire: Ledil Oy CA12764&CA12838_FLARE-MINI-A (Cree XP-E 76lm @ 250mA) Efficiency=94%
Lamps: 1 x Cree XP-E 76lm @ 250mA

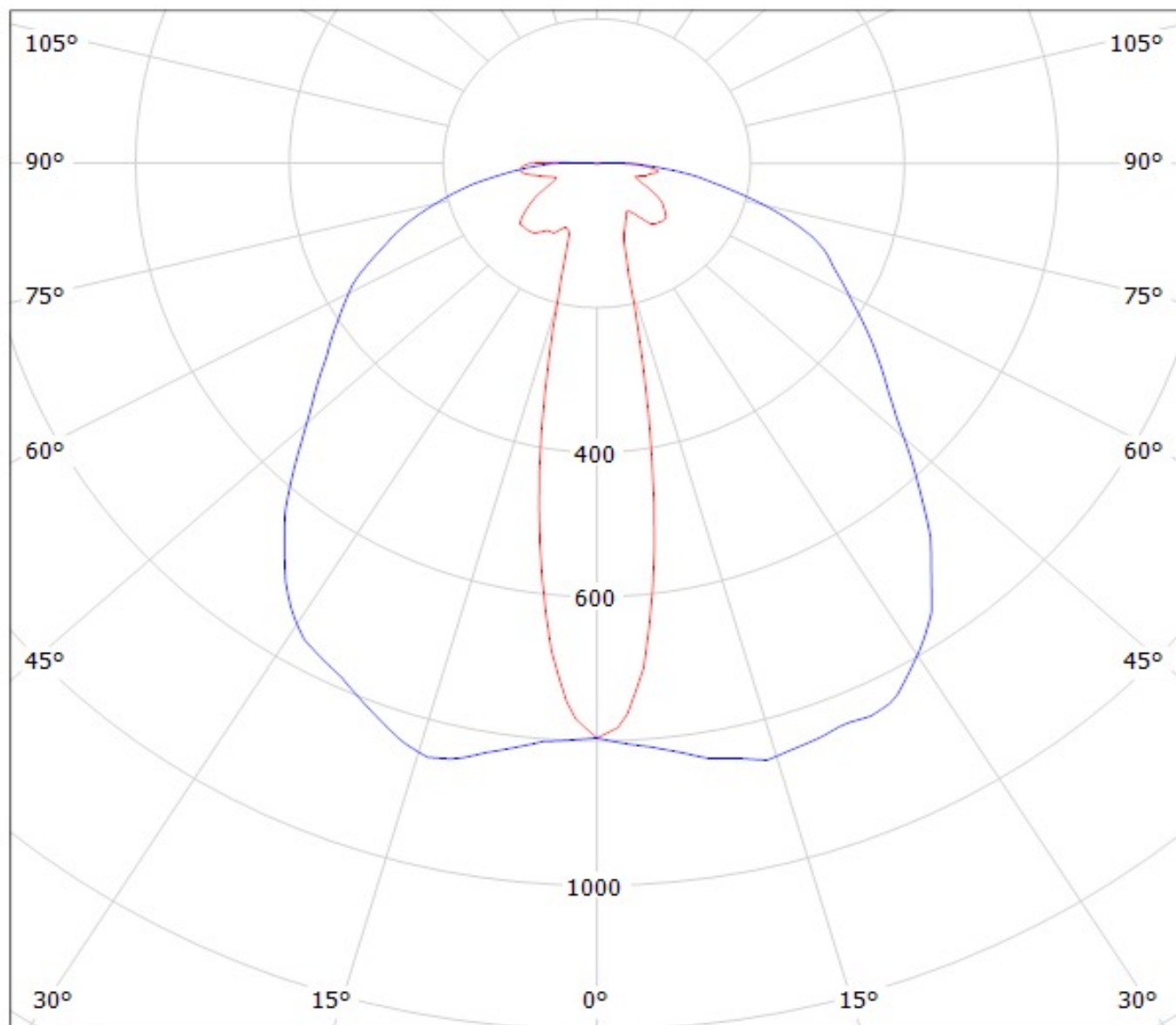


cd/klm

— C0 - C180

— C90 - C270

Luminaire: Ledil Oy CA12764&CA12838_FLARE-MINI-A (Cree XP-E 76lm @ 250mA) Efficiency=94%
Lamps: 1 x Cree XP-E 76lm @ 250mA



cd/klm

— C0 - C180

— C90 - C270