

XPort Universal Demo Board Quick Start

Copyright & Trademark

© 2009 Lantronix. All rights reserved. No part of the contents of this book may be transmitted or reproduced in any form or by any means without the written permission of Lantronix. Printed in the United States of America.

Ethernet is a trademark of XEROX Corporation.

Contacts

Lantronix Corporate Headquarters

15353 Barranca Parkway
Irvine, CA 92618, USA
Phone: 949-453-3990
Fax: 949-450-7249

Technical Support

Online: www.lantronix.com/support

Sales Offices

For a current list of our domestic and international sales offices, go to the Lantronix web site at www.lantronix.com/about/contact.

Revision History

Date	Rev.	Comments
September 2009	A	Initial Document

For the latest revision of this product document, please check our online documentation at www.lantronix.com/support/documentation.html.

Contents

Introduction	4
Universal Demo Board Kit Contents.....	4
What You Need to Know	4
Hardware Address	4
IP Address	4
Connecting an XPort Device.....	5
Network Method	5
Serial Method	5
Install DeviceInstaller	8
Assign an IP Address	8
Configure Your XPort Device	10
XPort	10
XPort Pro	10

Introduction

Thank you for purchasing the XPort Universal Demo Board from Lantronix.

This Quick Start describes the procedures for initial connection to the XPort and XPort Pro device through either a network connection or serial port.

Once a connection is established you can use the Web Manager or command line interface (CLI) for configuration and control.

Universal Demo Board Kit Contents

- ◆ XPort demo Board
- ◆ +3.3V Universal Power Supply with snap-fit plugs for different countries.
- ◆ RS-232 cable, DB9F, null modem
- ◆ Cat5e UTP RJ45M/M Ethernet cable
- ◆ Serial adaptor, 25-pin to 9-pin

Note: The XPort device must be purchased separately. CD with software utilities and documentation is included with each module.

What You Need to Know

Hardware Address

You need to know the unit hardware address (also known as MAC address) to identify the unit in the Device Installer search list. It is on the product label in the format:
00-20-4a-XX-XX-XX, where the XXs are unique numbers assigned to the product.

Hardware Address: 00-20-4a-____ - ____ - ____

IP Address

Your XPort device will need a unique IP address on your network. By default, the XPort Pro device is assigned an IP address by your DHCP server. If no DHCP server is available, the XPort will generate an AutoIP address (169.254.xxx.xxx).

If you are planning to use a static IP address, make note of it. The system administrator generally provides the IP address, subnet mask, and gateway. The IP address must be within a valid range, unique to your network, and in the same subnet as your PC.

IP Address: _____

Subnet Mask: _____

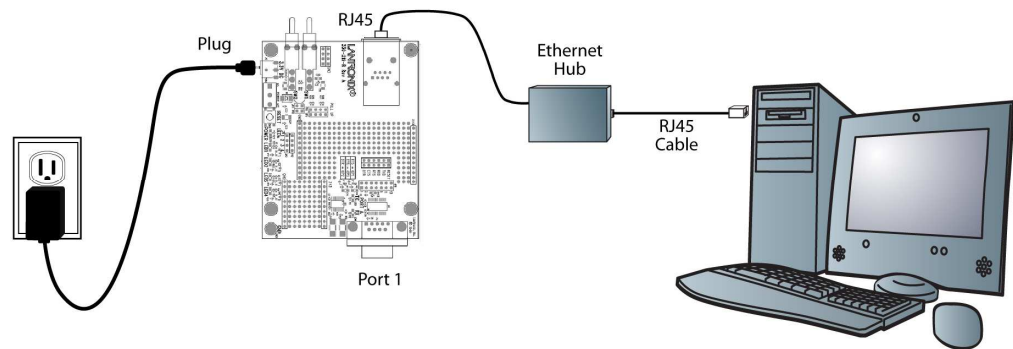
Gateway: _____

Connecting an XPort Device

Network Method

Connecting the Universal Demo Board to the network is the same procedure for both the XPort and XPort Pro.

1. Connect the PC to the Universal Demo Board with a cross-over cable or a hub/switch and two RJ45 cables. Make sure there is no router between the PC and the Universal Demo Board.



2. Select the appropriate power plug adaptor for your geographical location. Insert it into the slot on the Universal Power Supply; then plug the power supply into an outlet.
3. Connect the output plug of the power supply to the Universal Demo Board.
4. Move the power switch on the Universal Demo Board to ON.

This is the last step in 'connection.' The XPort device is ready for configuration.

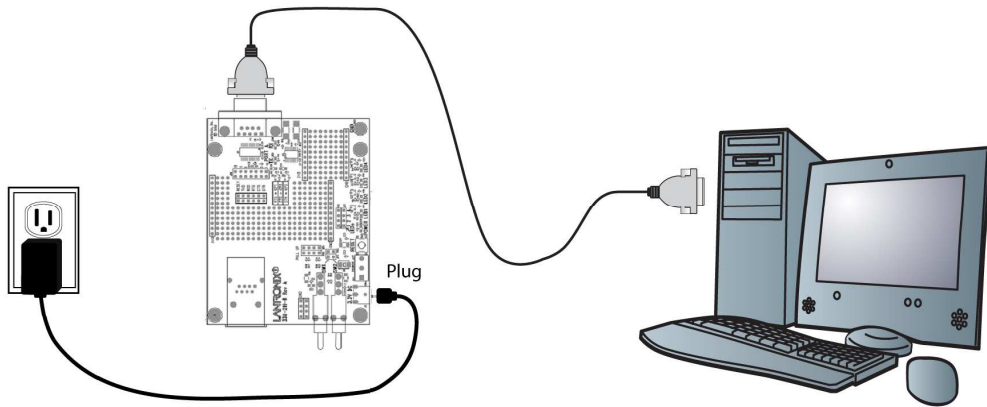
5. Continue with Assign an IP Address on page 8.

Serial Method

In the event that the equipment required for a network connection is not available for the initial configuration of the XPort device, the serial method can be used. Refer to either the XPort Pro User Guide or the XPort User Guide for information on configuring your XPort device using the serial method.

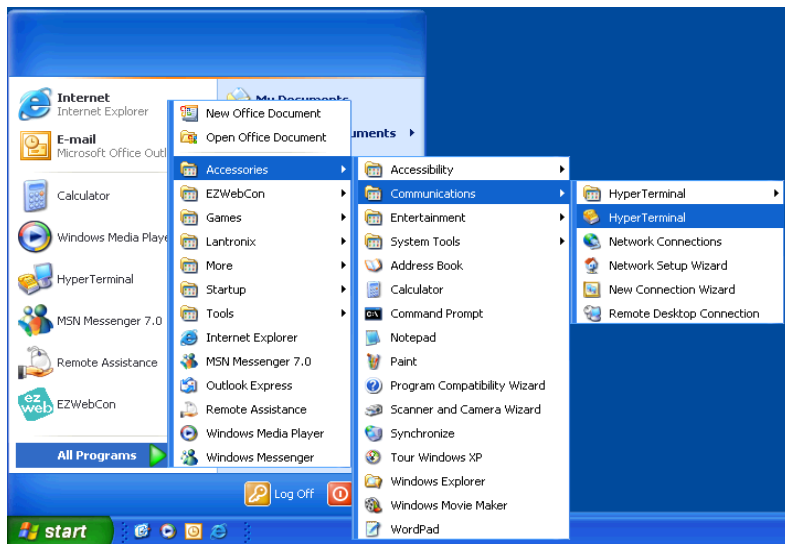
1. Connect one end of the null modem cable to your PC's serial port.
2. Connect the other end of the null modem cable to port 1 of the XPort Universal Demo Board.

The final connection setup should look like the following:



3. Open a terminal emulation program to access the CLI. This guide covers accessing the CLI using HyperTerminal.

To open HyperTerminal, click
Start→Programs→Accessories→Communications→HyperTerminal.



4. In the Connection Description window, enter a name for this connection.



5. In the Connect To window, select COM1 from the Connect Using drop-down menu.

Note: If the connection fails, try using COM2 instead or another COM port.



6. Configure the COM1 Properties Window to the following settings:

Bits per second: 9600

Data Bits: 8

Parity: None

Stop Bits: 1

Flow Control: None



The COM Port is setup for communication. Refer to either the *XPort Pro User Guide* or the *XPort User Guide* for information on configuring your XPort device using the serial method.

Install DeviceInstaller

Use DeviceInstaller to configure the IP address and other network parameters.

Note: You will need a Windows PC running Lantronix DeviceInstaller 4.2 or higher.

1. Open DeviceInstaller on the CD-ROM.


If the CD does not launch automatically:

- a. Click the Start button on the Task Bar and select Run.
 - b. Enter your CD drive letter, colon, backslash, Launch.exe (e.g., D:\Launch.exe).
2. Respond to the installation wizard prompts.

Note: For the latest revision of this utility, please check our online downloads at <http://www.lantronix.com/device-networking/utilities-tools/device-installer.html>

Assign an IP Address

The unit IP address is set for DHCP by default at the factory. The hardware address is on the product label. Assign a static IP address if you do not want the network to assign an IP address to the XPort Pro or do not have a DHCP server on the network.

1. Click **Start**→**Programs**→**Lantronix**→**DeviceInstaller**→**DeviceInstaller**. If your PC has more than one network adapter, a message appears. Select an adapter and click **OK**.
2. Click the **Search** icon and select the unit from the list of Lantronix device servers on the local network. (In case no DHCP server is available, it can take 30 seconds before an AutoIP address is generated and the unit is detectable).
3. Click the **Assign IP** icon .

Assignment Method

Would you like to specify the IP address or should the unit get its settings from a server out on the network?

Obtain an IP address automatically

Assign a specific IP address

4. Select **Assign a specific IP address** and click **Next**.
5. Enter the IP address.

The Subnet mask appears automatically based on the IP address. You may change it. On a local network, you can leave the Default gateway blank (all zeros).

IP Settings

Please fill in the IP address, subnet, and gateway to assign the device. The subnet will be filled in automatically as you type, but please verify it for accuracy. Incorrect values in any of the below fields can make it impossible for your device to communicate, and can cause network disruption.

IP address:

Subnet mask:

Default gateway:

6. Click **Next**.
7. Click **Assign** and wait several seconds until a confirmation message appears.
8. Click **Finish**.
9. Select the XPort Pro from the main window list and click **Tools→Ping**. The results appear in the Status area.

The screenshot shows a 'Ping' utility window. At the top, the 'IP Address' field contains '172.19.238.20'. To the right of this field are two buttons: 'Ping' and 'Clear Status'. Below the IP field is a 'Status' section containing a text area with four lines of output: 'Reply from 172.19.238.20:0: bytes=60 time=0ms TTL=64', repeated four times. At the bottom right of the window is a 'Close' button.

10. Click **Clear Status** to clear the window to ping the device again.


Note: If you do not receive “Reply” messages, ensure the IP address assigned is valid for the particular network segment you are working with.

11. Click **Close**.


Configure Your XPort Device

From DeviceInstaller it is easy to start the Lantronix browser-based tool, Web Manager, to configure the XPort device. For detailed information on Web Manager configuration and other methods, see the *XPort User Guide* or *XPort Pro User Guide*.

XPort

1. In DeviceInstaller, select the unit and then the Web Configuration tab. Press the Go icon . The Lantronix Web Manager window displays in your browser.
2. The XPort does not have a default user name or password, so just click **OK**.
3. Use the Menu on the left to navigate to sub-pages where you can configure the XPort device.
4. When you are finished, click the **Apply Settings** button to save your settings.

XPort Pro

1. In DeviceInstaller, select the unit and then the Web Configuration tab. Press the Go icon . The Lantronix Web Manager window displays in your browser.
2. The default user name is **admin** and the default password is **PASS**. Click **OK**.
3. Use the Menu on the left to navigate to sub-pages where you can configure the XPort Pro device.
4. Every sub-page has a **Submit** button that immediately stores and applies the new settings. Some network settings require a reboot to become effective.