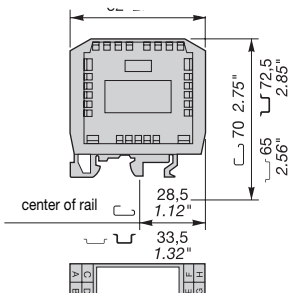


# Relay Interfaces

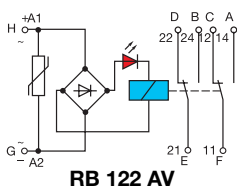
## R1800 relay modules



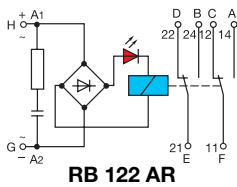
DIN 1-3



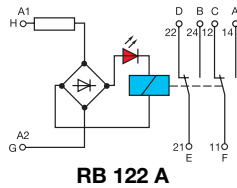
Relay blocks R1800



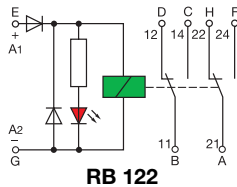
RB 122 AV



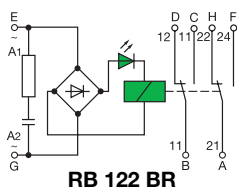
RB 122 AR



RB 122 A



RB 122



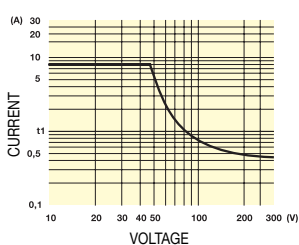
RB 122 BR



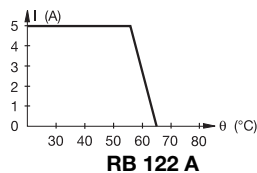
- Relay : 1 DPDT high level contacts 10 mA to 5 A - 18 mm .709" or 23 mm .906" spacing
- Relay : 1 DPDT very low level contacts 10<sup>-7</sup> A to 5 A - 18 mm .709" or 23 mm .906" spacing

### Characteristics

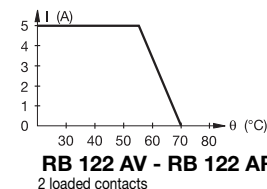
Relay characteristics	RB 122 AV	RB 122 AR	RB 122 A	RB 122	RB 122 BR
<b>COIL</b>					
Rated voltage +15%, -10% on DC ±15% on AC	24 VAC/DC	48 VAC/DC	110 VAC/DC	24 V DC	48 V DC
Frequency	50 / 60 Hz	50 / 60 Hz	50 / 60 Hz	50 / 60 Hz	50 / 60 Hz
Power	0.7 W	0.7 W	0.7 W - 1.8 VA	1.2 W	0.31 W
Rated current	26 mA	14 mA	16 mA	5.5 mA	13 mA
Drop-out voltage at 20°C	2.4 V AC/DC	4.8 V AC/DC	11 V AC/DC	22 V AC/DC	2.4 V DC
Permissible leakage current		1.6 mA			
Status device			red LED		green LED
<b>CONTACT</b>					
Type	1 DPDT				
Voltage switching range min./max.	12 V / 250 V	10 <sup>-3</sup> V / 250 V	12 V / 250 V	10 <sup>-3</sup> V / 250 V	
Current switching range min./max.	10 mA / 5 A			10 <sup>-7</sup> A / 5 A	
Load switching range	AC1 min. / max. DC1 min. / max.			10 <sup>-10</sup> VA / 1000 VA	
Number of on-load operations	0.6 VA / 1250 VA 0.6 W / see curve hereunder			10 <sup>-10</sup> W / see curve hereunder	
Number of off-load operations	2 x 10 <sup>5</sup>			5A/100W - 5A/1kVA : 10 <sup>5</sup>	
Operating speed	2 x 10 <sup>7</sup>			2 x 10 <sup>8</sup>	
Bounce	F 7 ms			8 ms	
Insulation coil / contact	O 4 ms			3 ms	
Resistance to shock coil / contact	3 ms			0.5 ms	
Insulation contact / contact	2000 V RMS			1500 V RMS	
Ambient temperature storage	4000 V RMS			4000 V RMS	
operating	1500 V RMS			2000 V RMS	
	-40°C to +80°C see derating curves				
<b>Other characteristics</b>					
Body material	grey				
Wire	Solid wire				
Wire size	Stranded wire				
Rated wire size	UL 94 V0				
Wire stripping length	0.2 - 4 mm <sup>2</sup> / 22 - 12 AWG				
Recommended screwdriver	0.22 - 2.5 mm <sup>2</sup> / 22 - 12 AWG				
Protection	2.5 mm <sup>2</sup> / 12 AWG				
Recommended torque	7 mm .276"				
Approvals	3.5 mm .137"				
Reference standards	IP20 NEMA1				
	0.4 - 0.6 Nm 3.5 - 5.3 lb.in				
	UL us for RB 122AR-110VAC/DC , RB 122-24VDC , RB 122BR-110VAC and RB122AV-24VAC/DC, CE				



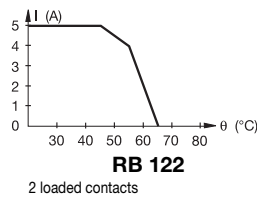
### Derating curves



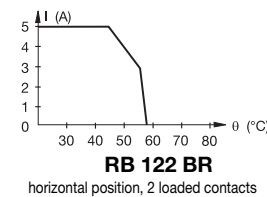
RB 122 A



RB 122 AV - RB 122 AR  
2 loaded contacts



RB 122  
2 loaded contacts



RB 122 BR  
horizontal position, 2 loaded contacts

### Order codes

Description	Type	Order P/N	Packaging	Weight
Relay module 1 DPDT high level 18 mm sp.	RB 122AV-24VAC/DC	1SNA 610 121 R2000	1	0.05
Relay module 1 DPDT high level 18 mm sp.	RB 122AV-48VAC/DC	1SNA 610 122 R2100	1	0.05
Relay module 1 DPDT high level 18 mm sp.	RB 122AR-110VAC/DC	1SNA 610 011 R2500	1	0.05
Relay module 1 DPDT high level 18 mm sp.	RB 122A-220VAC/DC	1SNA 610 123 R2200	1	0.05
Relay module 1 DPDT very low level 18 mm sp.	RB 122-24VDC	1SNA 610 059 R1500	1	0.05
Relay module 1 DPDT very low level 18 mm sp.	RB 122-48VDC	1SNA 610 060 R1200	1	0.05
Relay module 1 DPDT very low level 23 mm sp.	RB 122BR-110VAC	1SNA 610 115 R2200	1	0.05
Relay module 1 DPDT very low level 23 mm sp.	RB 122BR-220VAC	1SNA 610 089 R0400	1	0.05

### Accessories

End section	BADL V0	1SNA 399 903 R0200	50
	BAM	1SNA 103 002 R2600	50
	BAM V0	1SNA 399 306 R0300	50
Lengthwise marker	RLV	1SNA 103 849 R0300	
Marking method	RC55	see marking	