

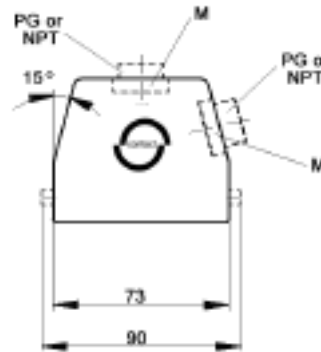
EPIC® CONNECTORS

HBE 10 Housings: Single Lever on Base



HOODS

TOP ENTRY



SIDE ENTRY



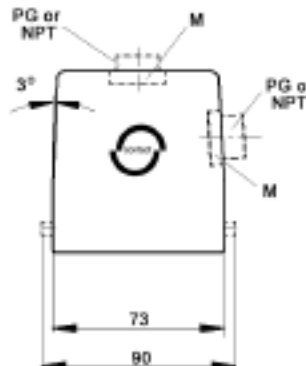
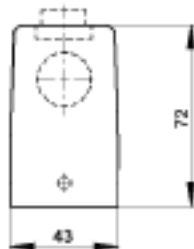
All dimensions are in mm.

Position of Cable Entry	Size of Entry			Standard Grey Coating			Black Coating (EP)		
	PG	NPT	Metric	PG Part #	NPT Part #	Metric Part #	PG Part #	NPT Part #	Metric Part #
Top Entry	16	1/2"	20	10.0409	10.0409 NP	19.0409	70.0490	70.0490 NP	79.0490
	21	3/4"	25	10.0407	10.0407 NP	19.0407	70.0496	70.0496 NP	79.0496
Side Entry	16	1/2"	20	10.0429	10.0429 NP	19.0429	70.0590	70.0590 NP	79.0590
	21	3/4"	25	10.0428	10.0428 NP	19.0428	70.0596	70.0596 NP	79.0596

Metric hoods do not come with a neck.

HIGH PROFILE HOODS

TOP ENTRY



SIDE ENTRY



All dimensions are in mm.

Position of Cable Entry	Size of Entry			Standard Grey Coating			Black Coating (EP)		
	PG	NPT	Metric	PG Part #	NPT Part #	Metric Part #	PG Part #	NPT Part #	Metric Part #
Top Entry	21	3/4"	25	70.0442	70.0442 NP	79.0442	70.0492	70.0492 NP	79.0492
	29	1"	32	70.0444	70.0444 NP	79.0444	70.0494	70.0494 NP	79.0494
Side Entry	21	3/4"	25	70.0542	70.0542 NP	79.0542	70.0592	70.0592 NP	79.0592
	29	1"	32	70.0544	70.0544 NP	79.0544	70.0594	70.0594 NP	79.0594

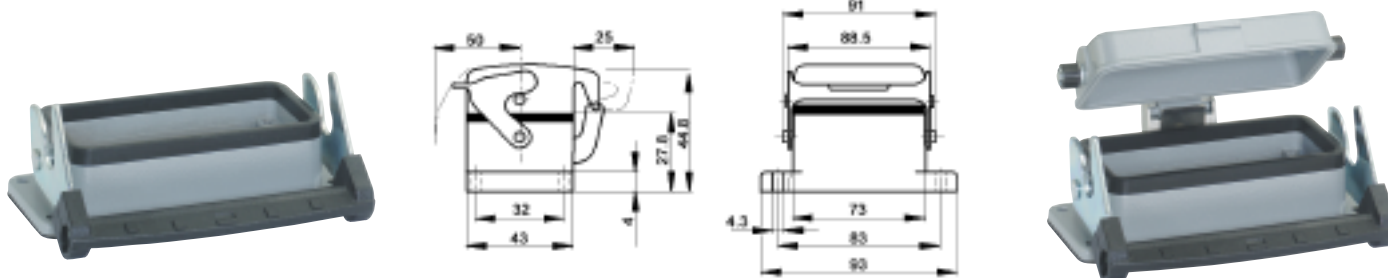
Metric hoods do not come with a neck.

EPIC® CONNECTORS

HBE 10 Housings: Single Lever on Base



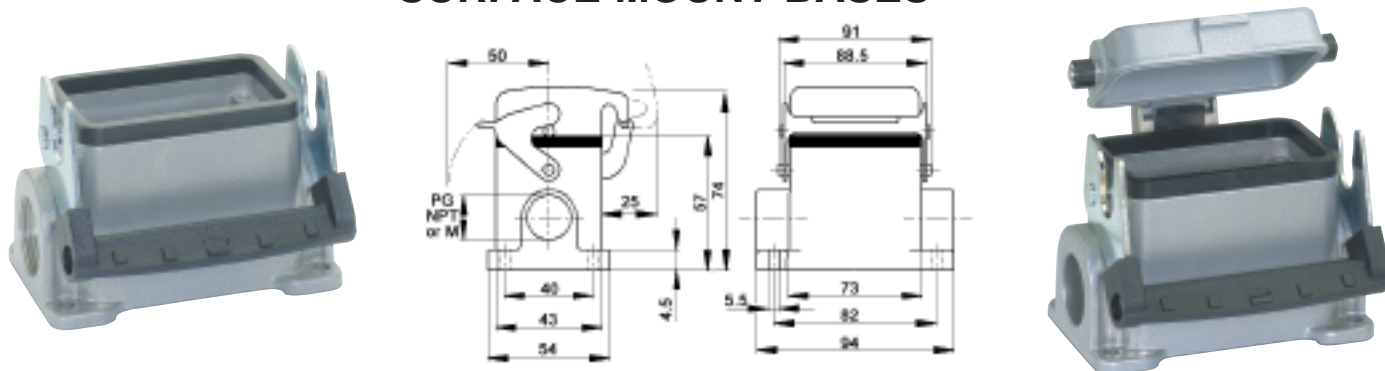
PANEL MOUNT BASES



All dimensions are in mm.

Description	Standard Grey Coating	Black Coating (EP)
Panel Mount without Dust Cover	10.0329	70.0327
Panel Mount with Dust Cover	10.0339	70.0337

SURFACE MOUNT BASES



All dimensions are in mm.

# of Entries	Size of Entry			Standard Grey Coating			Black Coating (EP)		
	PG	NPT	Metric	PG Part #	NPT Part #	Metric Part #	PG Part #	NPT Part #	Metric Part #
2 Entries	16	1/2"	20	10.0359	10.0359 NP	19.0359	70.0630	70.0630 NP	79.0630
			25	-	-	79.0616	-	-	79.0636
1 Entry	16	1/2"	20	10.0349	10.0349 NP	19.0349	70.0620	70.0620 NP	79.0620
			25	10.0347	10.0347 NP	19.0347	-	-	79.0626
2 Entries with dust cover	16	1/2"	20	10.0389	10.0389 NP	19.0389	70.0670	70.0670 NP	79.0670
			25	-	-	79.0656	-	-	79.0676
1 Entry with dust cover	16	1/2"	20	10.0369	10.0369 NP	19.0369	70.0660	70.0660 NP	79.0660
			25	-	-	79.0646	-	-	79.0666

DUST COVERS WITH ATTACHMENT STRING



Material: Thermoplastic Resin **Temperature:** -40°C to 125°C

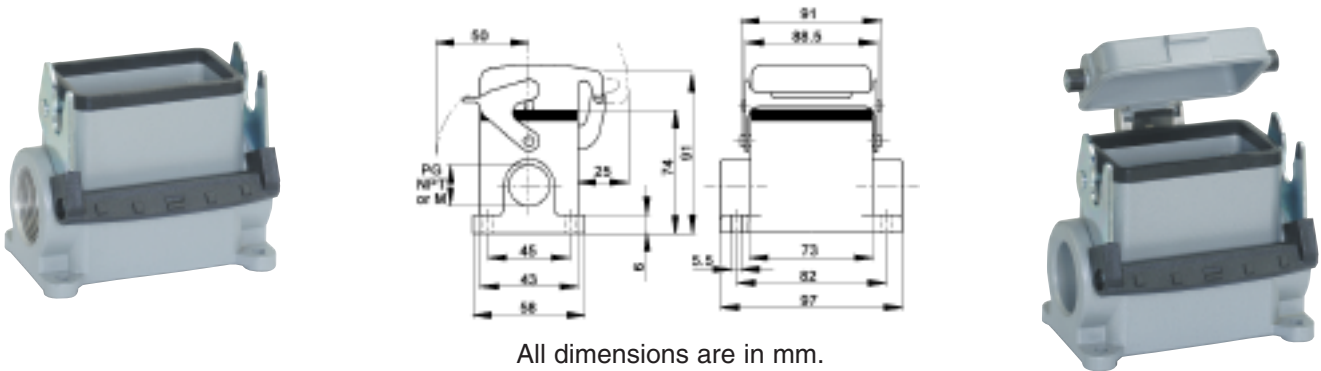
	Part #
Dust cover with single lever for HBE 10 Hoods	10.0486
Dust cover with single lever bolts for HBE 10 Panel Mount or Surface Mount Base/ Cable Coupler Hood	10.0487

EPIC® CONNECTORS

HBE 10 Housings: Single Lever on Base



HIGH PROFILE SURFACE MOUNT BASES

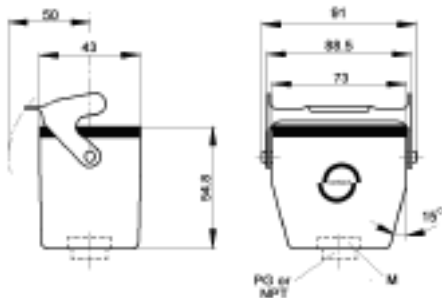


All dimensions are in mm.

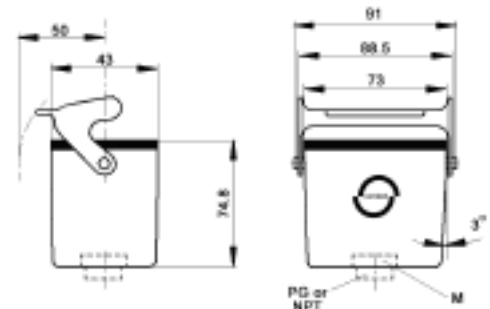
# of Entries	Size of Entry			Standard Grey Coating			Black Coating (EP)		
	PG	NPT	Metric	PG Part #	NPT Part #	Metric Part #	PG Part #	NPT Part #	Metric Part #
2 Entries	21	3/4"	25	70.0612	70.0612 NP	79.0612	70.0632	70.0632 NP	79.0632
	29	1"	32	70.0614	70.0614 NP	79.0614	70.0634	70.0634 NP	79.0634
1 Entry	21	3/4"	25	70.0602	70.0602 NP	79.0602	70.0622	70.0622 NP	79.0622
	29	1"	32	70.0604	70.0604 NP	79.0604	70.0624	70.0624 NP	79.0624
2 Entries with dust cover	21	3/4"	25	70.0652	70.0652 NP	79.0652	70.0672	70.0672 NP	79.0672
	29	1"	32	70.0654	70.0654 NP	79.0654	70.0674	70.0674 NP	79.0674
1 Entry with dust cover	21	3/4"	25	70.0642	70.0642 NP	79.0642	70.0662	70.0662 NP	79.0662
	29	1"	32	70.0644	70.0644 NP	79.0644	70.0664	70.0664 NP	79.0664

CABLE COUPLER HOODS

STANDARD PROFILE



HIGH PROFILE



Profile	Size of Entry			Standard Grey Coating			Black Coating (EP)		
	PG	NPT	Metric	PG Part #	NPT Part #	Metric Part #	PG Part #	NPT Part #	Metric Part #
Standard Profile	16	1/2"	20	10.0469	10.0469 NP	19.0469	70.0430	70.0430 NP	79.0430
	21	3/4"	25	70.0422	70.0422 NP	79.0422	70.0432	70.0432 NP	79.0432
High Profile	21	3/4"	25	70.0424	70.0424 NP	79.0424	70.0434	70.0434 NP	79.0434
	29	1"	32	70.0426	70.0426 NP	79.0426	70.0436	70.0436 NP	79.0436

Metric hoods do not come with a neck.

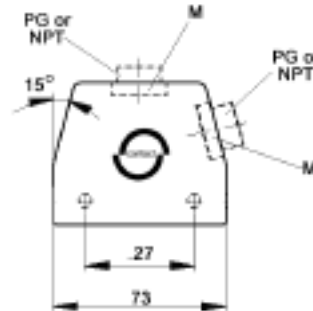
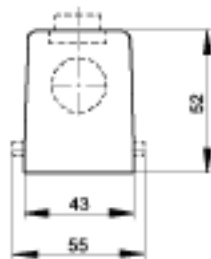
EPIC® CONNECTORS

HBE 10 Housings: Double Levers on Base



HOODS

TOP ENTRY



SIDE ENTRY



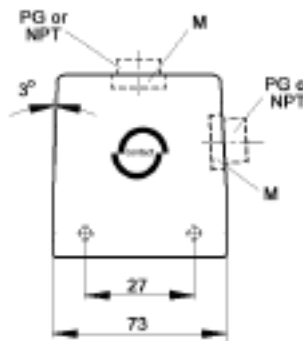
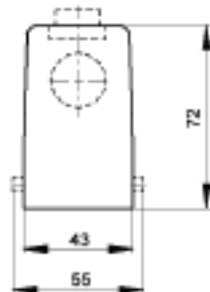
All dimensions are in mm.

Position of Cable Entry	Size of Entry			Standard Grey Coating			Black Coating (EP)		
	PG	NPT	Metric	PG Part #	NPT Part #	Metric Part #	PG Part #	NPT Part #	Metric Part #
Top Entry	16	1/2"	20	10.0400	10.0400 NP	19.0400	70.0510	70.0510 NP	79.0510
	21	3/4"	25	10.0401	10.0401 NP	19.0401	70.0512	70.0512 NP	79.0512
Side Entry	16	1/2"	20	10.0420	10.0420 NP	19.0420	70.0530	70.0530 NP	79.0530
	21	3/4"	25	10.0421	10.0421 NP	19.0421	70.0532	70.0532 NP	79.0532

Metric hoods do not come with a neck.

HIGH PROFILE HOODS

TOP ENTRY



SIDE ENTRY



All dimensions are in mm.

Position of Cable Entry	Size of Entry			Standard Grey Coating			Black Coating (EP)		
	PG	NPT	Metric	PG Part #	NPT Part #	Metric Part #	PG Part #	NPT Part #	Metric Part #
Top Entry	21	3/4"	25	70.0504	70.0504 NP	79.0504	70.0514	70.0514 NP	79.0514
	29	1"	32	70.0506	70.0506 NP	79.0506	70.0516	70.0516 NP	79.0516
Side Entry	21	3/4"	25	70.0524	70.0524 NP	79.0524	70.0534	70.0534 NP	79.0534
	29	1"	32	70.0526	70.0526 NP	79.0526	70.0536	70.0536 NP	79.0536

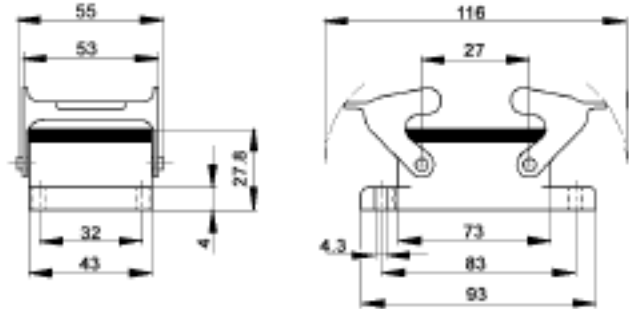
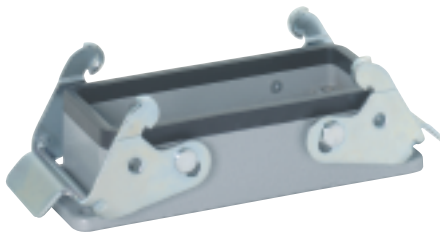
Metric hoods do not come with a neck.

EPIC® CONNECTORS

HBE 10 Housings: Double Levers on Base



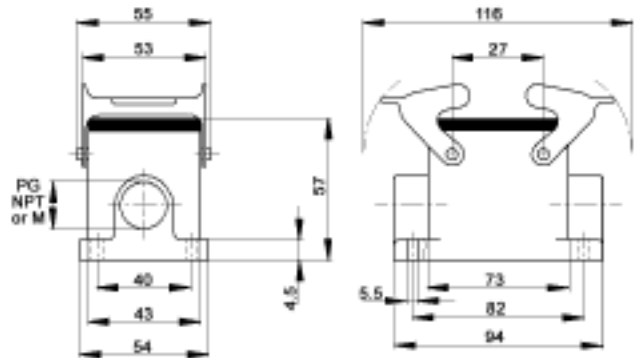
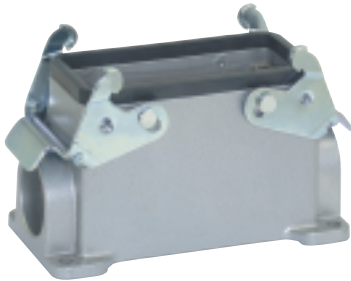
PANEL MOUNT BASES



All dimensions are in mm.

Description	Standard Grey Coating	Black Coating (EP)
Panel Mount without Dust Cover	10.0320	70.0325

SURFACE MOUNT BASES



All dimensions are in mm.

# of Entries	Size of Entry			Standard Grey Coating			Black Coating (EP)		
	PG	NPT	Metric	PG Part #	NPT Part #	Metric Part #	PG Part #	NPT Part #	Metric Part #
2 Entries	16	1/2"	20	10.0350	10.0350 NP	19.0350	70.0380	70.0380 NP	79.0380
without cover	-	-	25	-	-	19.0351	-	-	79.0386
1 Entry	16	1/2"	20	10.0340	10.0340 NP	19.0340	70.0370	70.0370 NP	79.0370
without cover	-	-	25	-	-	19.0341	-	-	79.0376

DUST COVERS WITH ATTACHMENT STRING



Material: Thermoplastic Resin Temperature: -40°C to 125°C

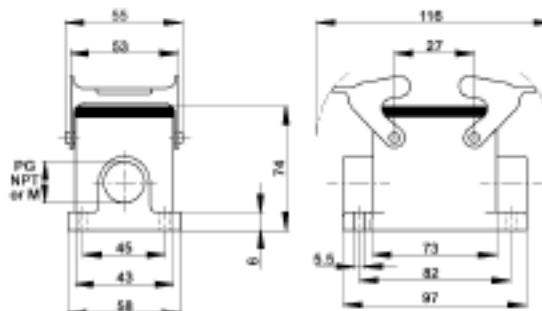
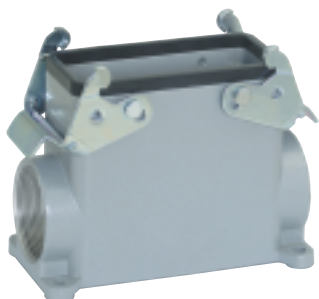
	Part #
Dust cover with double levers and gasket for HBE 10 Hoods	10.0485
Dust cover with double lever bolts for HBE 10 Panel Mount or Surface Mount Base/ Cable Coupler Hood	10.0470
Dust cover with double lever bolts and gasket for HBE 10 Hoods	10.0471

EPIC® CONNECTORS

HBE 10 Housings: Double Levers on Base



HIGH PROFILE SURFACE MOUNT BASES



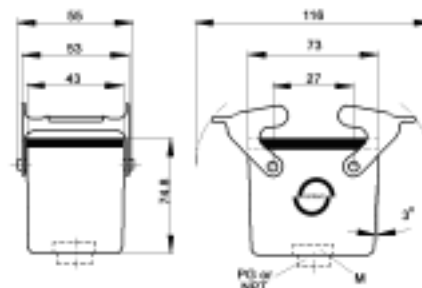
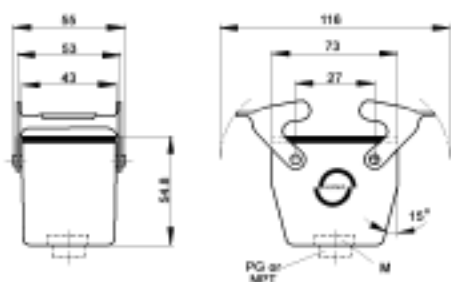
All dimensions are in mm.

# of Entries	Size of Entry			Standard Grey Coating			Black Coating (EP)		
	PG	NPT	Metric	PG Part #	NPT Part #	Metric Part #	PG Part #	NPT Part #	Metric Part #
2 Entries without cover	21	3/4"	25	70.0362	70.0362 NP	79.0362	70.0382	70.0382 NP	79.0382
	29	1"	32	70.0364	70.0364 NP	79.0364	70.0384	70.0384 NP	79.0384
1 Entry without cover	21	3/4"	25	70.0352	70.0352 NP	79.0352	70.0372	70.0372 NP	79.0372
	29	1"	32	70.0354	70.0354 NP	79.0354	70.0374	70.0374 NP	79.0374

CABLE COUPLER HOODS

STANDARD PROFILE

HIGH PROFILE



All dimensions are in mm.

Profile	Size of Entry			Standard Grey Coating			Black Coating (EP)		
	PG	NPT	Metric	PG Part #	NPT Part #	Metric Part #	PG Part #	NPT Part #	Metric Part #
Standard Profile	16	1/2"	20	10.0460	10.0460 NP	19.0460	70.0410	70.0410 NP	79.0410
	21	3/4"	25	70.0402	70.0402 NP	79.0402	70.0412	70.0412 NP	79.0412
High Profile	21	3/4"	25	70.0404	70.0404 NP	79.0404	70.0414	70.0414 NP	79.0414
	29	1"	32	70.0406	70.0406 NP	79.0406	70.0416	70.0416 NP	79.0416

Metric hoods do not come with a neck.

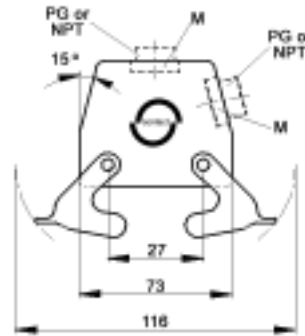
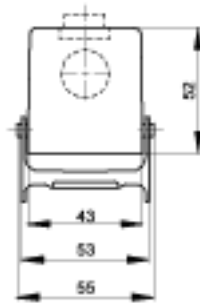
EPIC® CONNECTORS

HBE 10 Housings: Double Levers on Hood



HOODS

TOP ENTRY



SIDE ENTRY



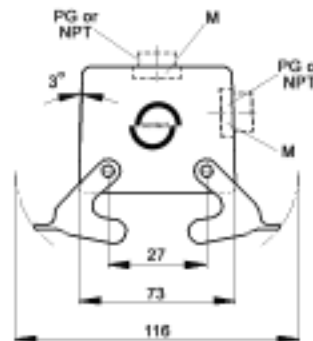
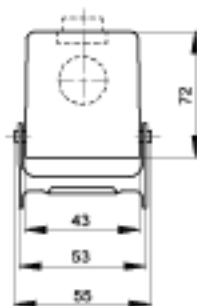
All dimensions are in mm.

Position of Cable Entry	Size of Entry			Standard Grey Coating			Black Coating (EP)		
	PG	NPT	Metric	PG Part #	NPT Part #	Metric Part #	PG Part #	NPT Part #	Metric Part #
Top Entry	16	1/2"	20	10.0410	10.0410 NP	19.0410	70.0560	70.0560 NP	79.0560
	-	-	25	-	-	79.0557	-	-	79.0566
Side Entry	16	1/2"	20	10.0450	10.0450 NP	19.0450	70.0580	70.0580 NP	79.0580
	-	-	25	-	-	79.0577	-	-	79.0586

Metric hoods do not come with a neck.

HIGH PROFILE HOODS

TOP ENTRY



SIDE ENTRY



All dimensions are in mm.

Position of Cable Entry	Size of Entry			Standard Grey Coating			Black Coating (EP)		
	PG	NPT	Metric	PG Part #	NPT Part #	Metric Part #	PG Part #	NPT Part #	Metric Part #
Top Entry	21	3/4"	25	70.0552	70.0552 NP	79.0552	70.0562	70.0562 NP	79.0562
	29	1"	32	70.0554	70.0554 NP	79.0554	70.0564	70.0564 NP	79.0564
Side Entry	21	3/4"	25	70.0572	70.0572 NP	79.0572	70.0582	70.0582 NP	79.0582
	29	1"	32	70.0574	70.0574 NP	79.0574	70.0584	70.0584 NP	79.0584

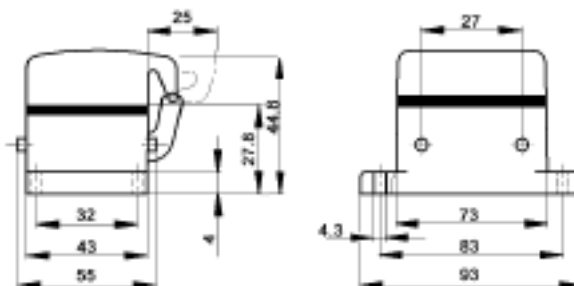
Metric hoods do not come with a neck.

EPIC® CONNECTORS

HBE 10 Housings: Double Levers on Hood



PANEL MOUNT BASES



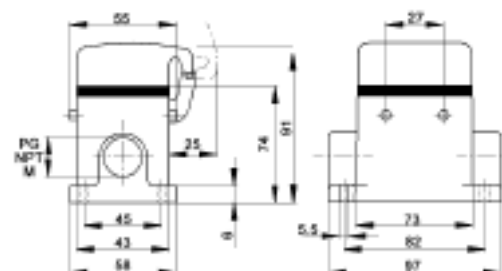
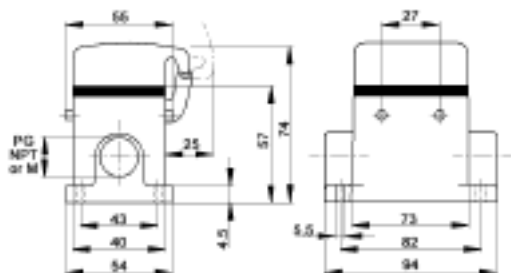
All dimensions are in mm.

Description	Standard Grey Coating	Black Coating (EP)
Panel Mount with Dust Cover	10.0330	70.0335

SURFACE MOUNT BASES

STANDARD PROFILE

HIGH PROFILE



All dimensions are in mm.

STANDARD PROFILE

# of Entries	Size of Entry			Standard Grey Coating			Black Coating (EP)		
	PG	NPT	Metric	PG Part #	NPT Part #	Metric Part #	PG Part #	NPT Part #	Metric Part #
2 Entries with Dust Cover	16	1/2"	20	10.0380	10.0380 NP	19.0380	70.0480	70.0480 NP	79.0480
	-	-	25	-	-	79.0466	-	-	79.0486
1 Entry with Dust Cover	16	1/2"	20	10.0360	10.0360 NP	19.0360	70.0470	70.0470 NP	79.0470
	-	-	25	-	-	19.0361	-	-	79.0476

HIGH PROFILE

# of Entries	Size of Entry			Standard Grey Coating			Black Coating (EP)		
	PG	NPT	Metric	PG Part #	NPT Part #	Metric Part #	PG Part #	NPT Part #	Metric Part #
2 Entries with Dust Cover	21	3/4"	25	70.0462	70.0462 NP	79.0462	70.0482	70.0482 NP	79.0482
	29	1"	32	70.0464	70.0464 NP	79.0464	70.0484	70.0484 NP	79.0484
1 Entry with Dust Cover	21	3/4"	25	70.0452	70.0452 NP	79.0452	70.0472	70.0472 NP	79.0472
	29	1"	32	70.0454	70.0454 NP	79.0454	70.0474	70.0474 NP	79.0474

