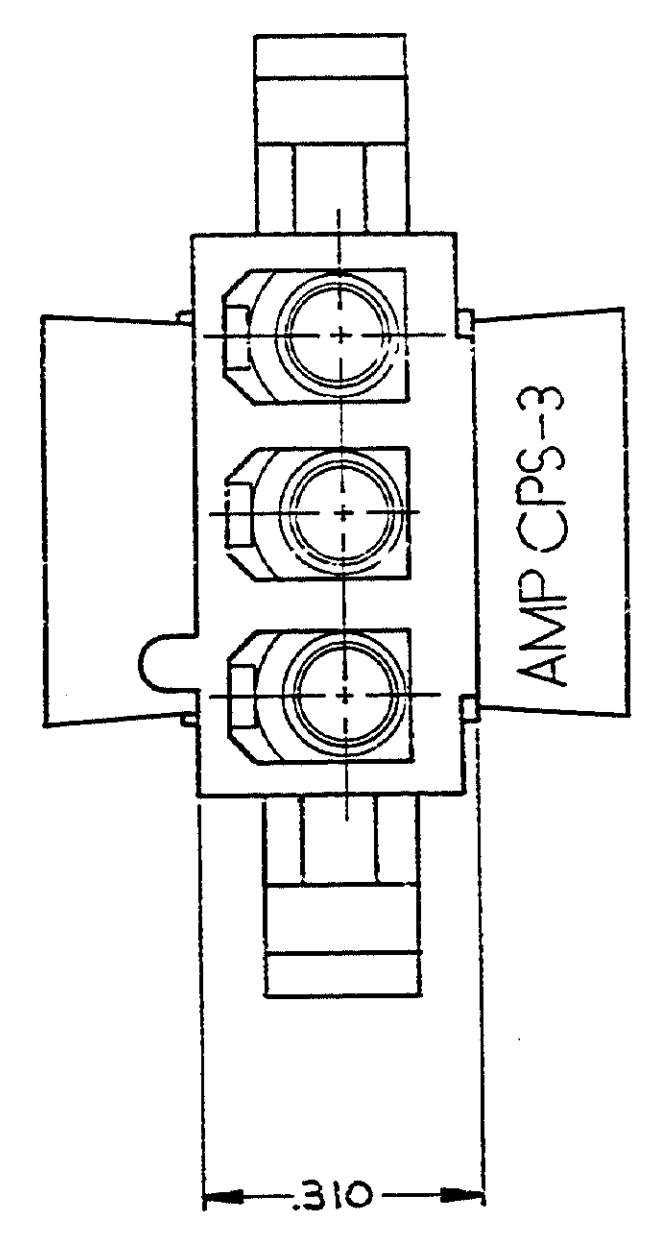
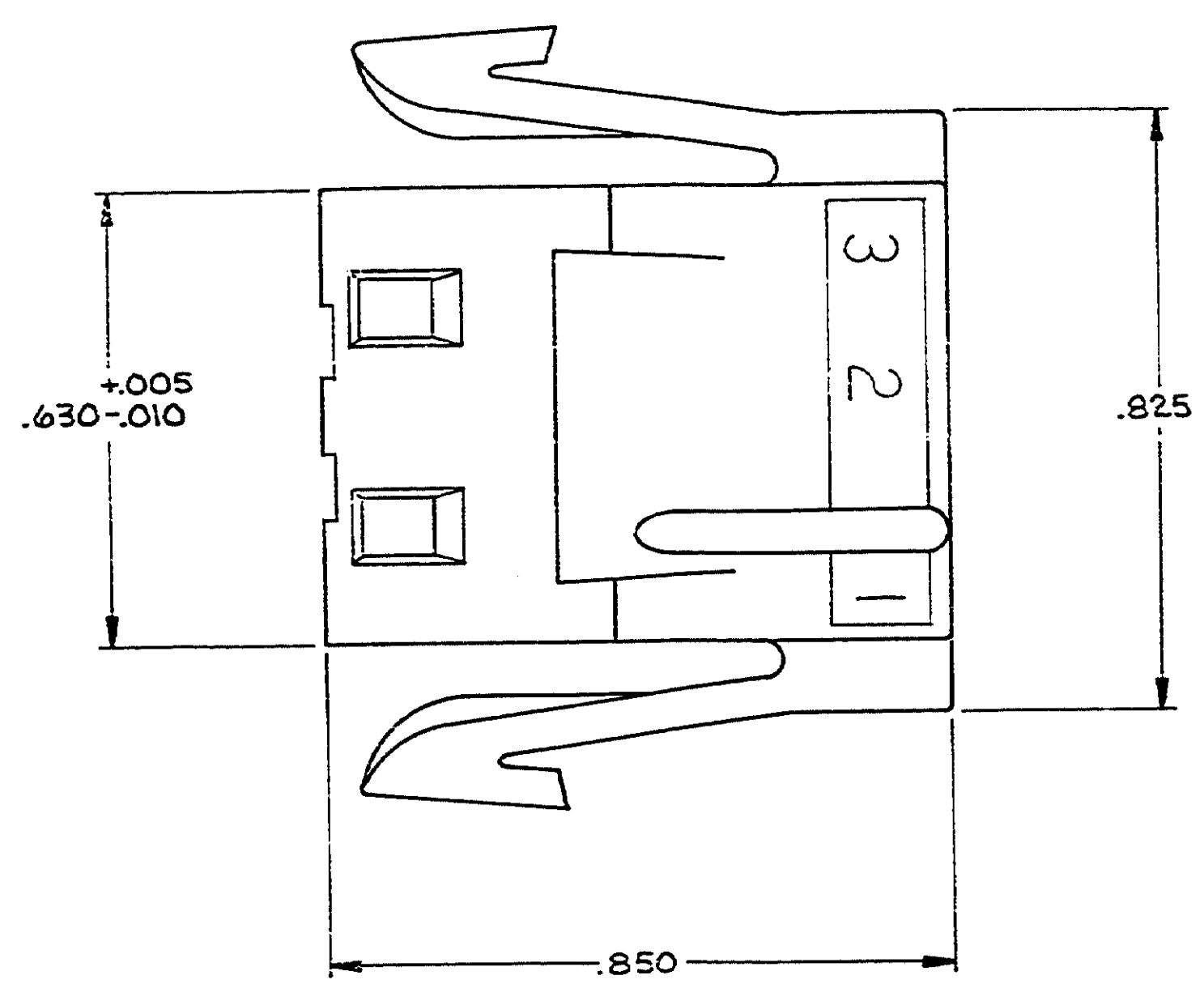
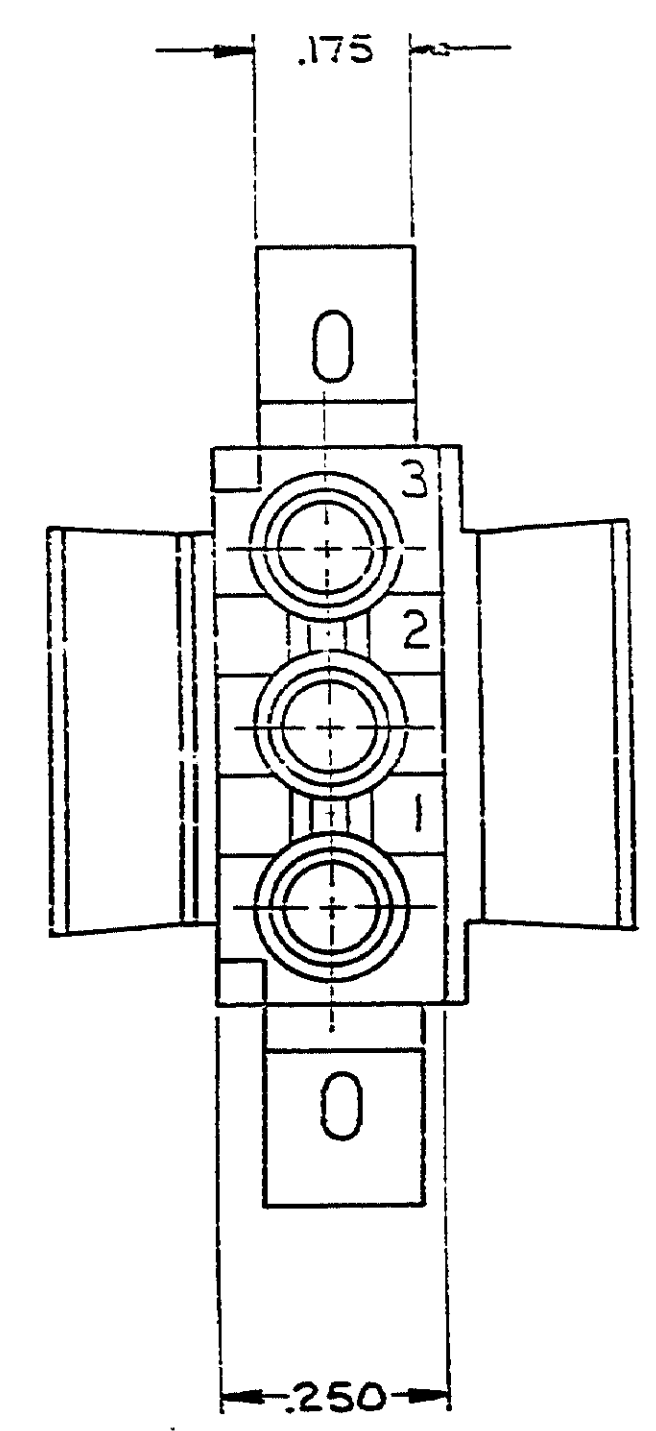


DRAWING MADE IN THIRD ANGLE PROJECTION

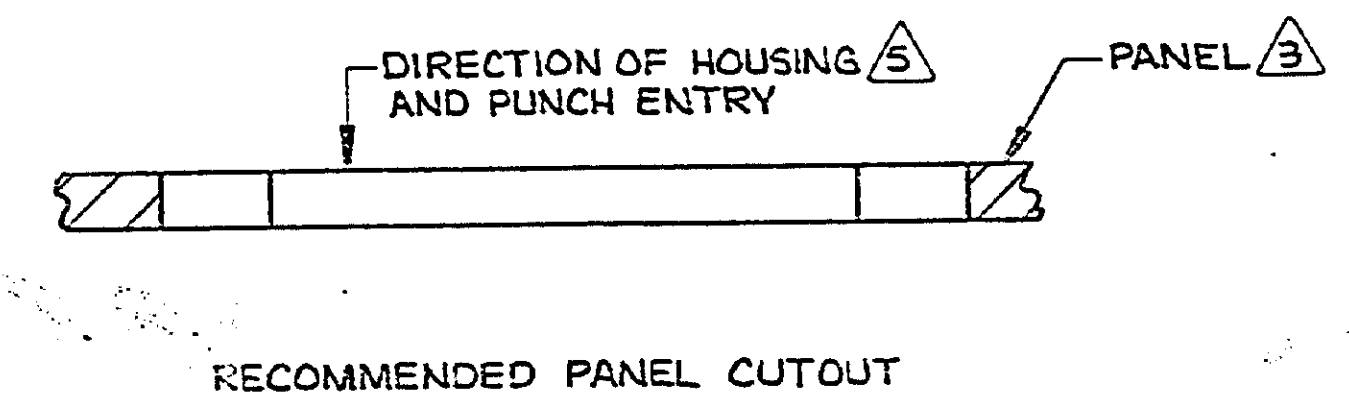
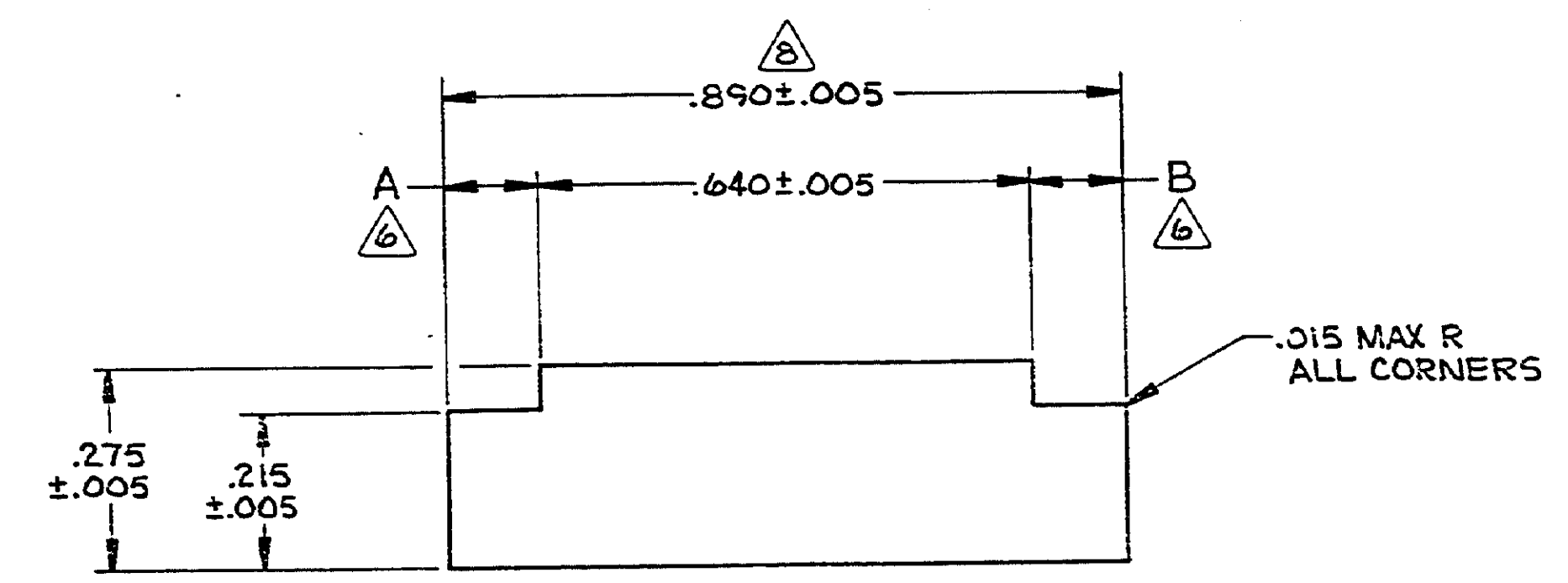
THIS DRAWING IS UNPUBLISHED. RELEASED FOR PUBLICATION

© COPYRIGHT 1986 BY AMP INCORPORATED, HARRISBURG, PA. ALL INTERNATIONAL RIGHTS RESERVED. AMP PRODUCTS MAY BE COVERED BY U.S. AND FOREIGN PATENTS AND/OR PATENTS PENDING.

		REVISIONS		
REV	ZONE	DESCRIPTION	DATE	APPROVED
M		OBsolete 1-3, 1-8, 1-7, 1-8 PER CM-475, REVISED AND REDRAWN PER CM-589	5-30-86	RS
N		OBsolete 1-2, 1-4, 1-6 PER CM-895 AND REV PER CM-903	6-18-87	PKC
P		Obs 1-1 PER CM-980	11-24-87	RS
R		REVISE PER CM-1821	7-29-89	PKC
S		REV PER CM-3450	7-23-91	NUG
T		REV PER CM-3603	12-12-91	DS
U		OBS 1-9 PER CM 2708	1-11-93	TS/RS



1. MATES WITH CAP PART NUMBER 480305.
2. ACCEPTS MATE-N-LOK SOCKET CONTACTS.
3. RECOMMENDED PANEL THICKNESS .025-.065.
4. BOTH LOCKING LEGS TO BE SQUEEZED TOGETHER AND HOUSING TO BE INSERTED "STRAIGHT-IN" AS OPPOSED TO A ROCKING MANNER OF INSERTION.
5. PANEL MUST BE PUNCHED SO THAT THE HOUSING ENTERS THE PANEL IN THE SAME DIRECTION AS THE PUNCH.
6. DIMENSIONS A AND B TO BE EQUAL WITHIN .005.
7. PANEL MUST NOT HAVE ANY MATERIAL (PAINT, PORCELAIN, ETC.) APPLIED IN THE MOUNTING HOLE AREA THAT WOULD DECREASE RETENTION OF THE HOUSING IN THE PANEL.
8. IF NOTES 5 AND/OR 7 ARE NOT COMPLIED WITH, THE .890 DIMENSION SHOULD BE REDUCED TO .880 TO ASSURE PROPER HOUSING RETENTION IN THE PANEL.



UNLESS OTHERWISE SPECIFIED DIMENSIONS ARE IN INCHES. TOLERANCES ON: DECIMALS ± .010 ANGLES ±		CONTRACT NO		NATURAL		NYLON, UL94V-2		1-480304-0	
MATERIAL		DR <i>K. White</i> 5-30-86		COLOR		MATERIAL		PART NO	
FINISH		CHK <i>R. Sherry</i> 6-3-86		NAME		AMP INCORPORATED Harrisburg, Pa. 17105		PLUG, 3 CIRCUIT, MATE-N-LOK™	
		APPD <i>M. Sherry</i> 6-3-86		SIZE		FSCM NO		DRAWING NO	
		OTHER APPD		D		00779		480304	
				SCALE 5:1				SHEET 1 OF 1	

CUSTOMER DRAWING