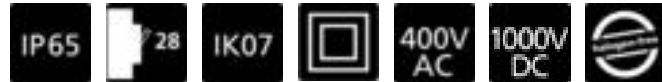
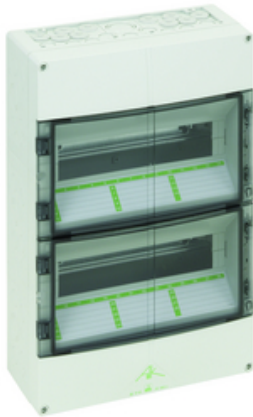


Product

AK 28



Entries

Entries top end:

17 x M20

2 x M20/M25

1 x M32/M40

Entries bottom end:

15 x M20

2 x M20/M25

1 x M32/M40

Entries on each side:

12 x M20

3 x M25/M32

Distribution board, 2 row, 28 modules, 150 mm rail spacing, screwless PE/N terminal rails each with 6 screwable clamping points, 2.5 - 16 mm², 21 screwless clamping points 1.5 mm² - 4 mm², elastic entries on top, with cable covering, masking and labelling strips, additional double-membrane seals and other accessories

Article: AK 28

Technical Data

Dimensions:

Width: 300 mm

Length: 450 mm

Height: 142 mm

material:

Base: Polystyrene, grey, similar to RAL 7035

Cover: Polystyrene, grey, similar to RAL 7035

Hinged window: Polycarbonat, transparent

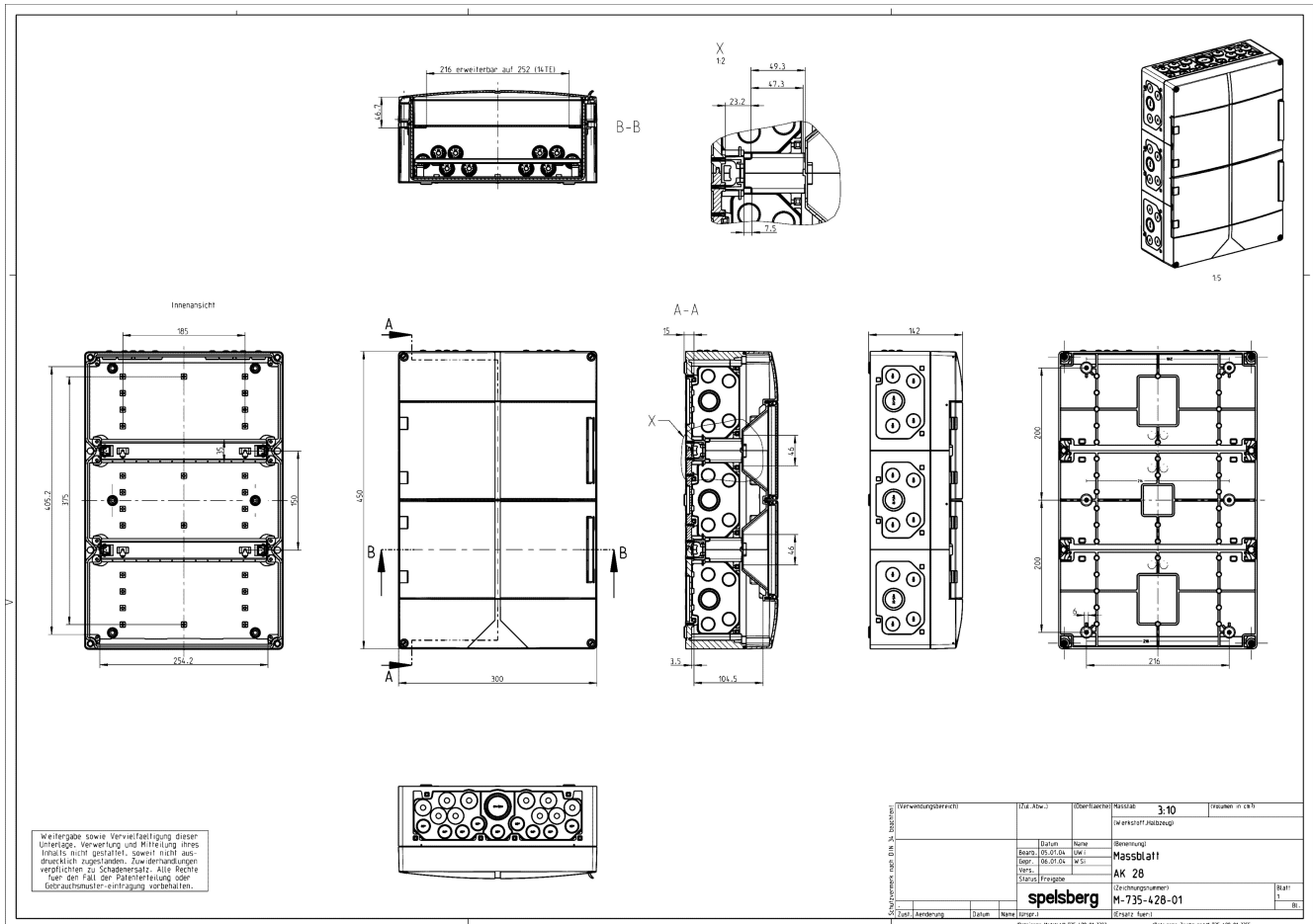
Sealing: Polyurethane

Cover screw: Polyamide 6, fiber-glass reinforced

Properties:

| | |
|-------------------------------|---------------------------------------|
| Ingress protection: | IP65 - acc. EN 60529 / DIN VDE 0470-1 |
| Number of distribution units: | 28 |
| Tackable: | √ |
| Fire protection: | none |
| Halogen-free: | √ |
| Heavy metals-free: | √ |
| PVC-free: | √ |
| Silicone-free: | √ |

Drawing



Manufacturer

Günther Spelsberg GmbH + Co. KG
 Im Gewerbepark 1
 58579 Schalksmühle
 +49 (0)2355/892-0
 +49 (0)2355/892-299
 www.spelsberg.de