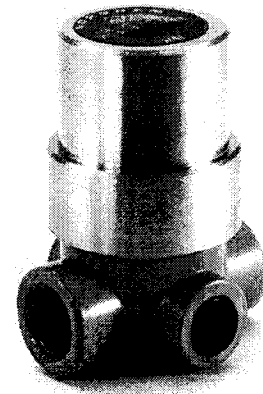


- **Neat and compact**
- **Regulator pressure set and sealed at factory - tamper resistant**
- **Particularly suitable for use as a safety regulator in conjunction with blow-guns**

Miniature Pre-set Regulator G¹/₄



Technical Data

Medium:

Compressed air only

Maximum Inlet Pressure:

28 bar

Operating Temperature:

-20 C* to +80 C

*Consult our Technical Service for use below +2 C

Pre-set Pressure Range:

0,5 - 6,3 bar¹

¹Please specify Pre-set Regulated Pressure required when ordering. Units are pre-set with 7 bar inlet pressure unless otherwise specified.

Typical Setting Accuracy of Regulator with 7 bar inlet pressure and zero flow:

2 bar (+0,07 bar, - 0,2 bar)

Gauge Ports:

R_C 1/8

Port Size

G¹/₄ to ISO 1179

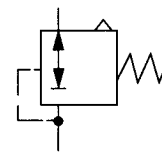
Accepts ISO 228 (BS 2779) parallel or ISO 7 (BS 21) taper connectors

Alternative Models

Other port thread forms

Materials

Zinc alloy body. Aluminium alloy bonnet. Synthetic rubber elastomeric materials.



Ordering Information

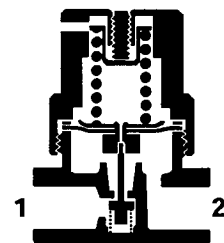
To order a standard Miniature Pre-set Regulator, quote model number from table overleaf and add the pressure setting required.

For non-standard models please consult our Technical Service.

The alternative models are available pre-set to any required pressure within the ranges quoted above.

The selected pressure is pre-set at the factory and the unit permanently sealed.

The regulators are non-repairable items.





Standard Miniature Pre-set Regulators

Pre-set Pressure Range	Port Size	Relieving	Weight kg
2 bar Blow Gun Regulator	G $\frac{1}{4}$	R16-200-R30D	0,16
0,5 - 1,0 bar*	G $\frac{1}{4}$	R16-200-RNTD	0,14
1,0 - 4,0 bar*	G $\frac{1}{4}$	R16-200-RNED	0,14
4,0 - 6,3 bar*	G $\frac{1}{4}$	R16-200-RNKD	0,15

*Specify Pre-set pressure required, e.g. R16-200-RNED at 3 bar.

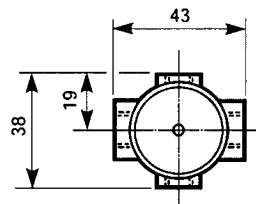
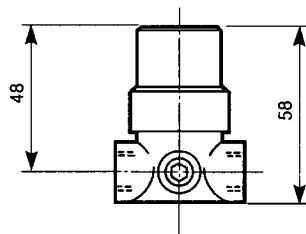
Non-standard Models

For other options, please consult our Technical Service.

Accessories

Pressure Gauges, see page 8.11.031.01.

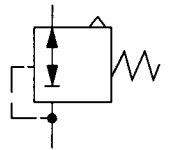
Miniature Pre-set Regulator



2 bar spring

Relieving

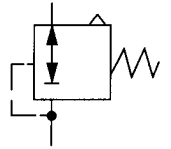
R16-200-R30D G $\frac{1}{4}$



0,5 - 1,0 bar spring

Relieving

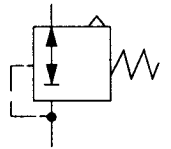
R16-200-RNTD G $\frac{1}{4}$



1,0 - 4,0 bar spring

Relieving

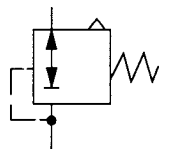
R16-200-RNED G $\frac{1}{4}$



4,0 - 6,3 bar spring

Relieving

R16-200-RNKD G $\frac{1}{4}$



Warning

These products are intended for use in industrial compressed air systems only. Do not use these products where *pressures* and *temperatures* can exceed those listed under 'Technical Data'.

Before using these products with fluids other than those specified, for non-industrial applications, life-support systems, or other applications not within published specifications, consult NORGREN.

Through misuse, age, or malfunction, components used in fluid power systems can fail in various modes. The system designer is warned to consider the failure modes of all component parts used in fluid power systems and to provide adequate safeguards to prevent personal injury or damage to equipment in the event of such failure.

System designers must provide a warning to end users in the system instructional manual if protection against a failure mode cannot be adequately provided.

System designers and end users are cautioned to review specific warnings found in instruction sheets packed and shipped with these products.