



Cylinders



CHOOSING THE RIGHT PRODUCT.....	8
RADIAL NT+/NT.....	16
AXI'HOME.....	22
AXI'TEC.....	26
VIP+.....	30
VOLT.....	34
V5.....	38
FIRST.....	42

For greater security choose a key system protected for life

The risk: uncontrolled key reproduction

Nowadays duplicating a key is simple with most non-protected systems. Anyone can go to a key cutting service and have a key duplicated anonymously : either for a key to your apartment or to your office. Such simple and uncontrolled key duplication could be dangerous, which jeopardise the security of many premises.



SWITCH TO 3D SECURITY



The new solution: Vachette's 3D Trademark registration key systems

LONG LASTING

Life-time-controlled key duplication: key blank protected by 3D Trademark registration.

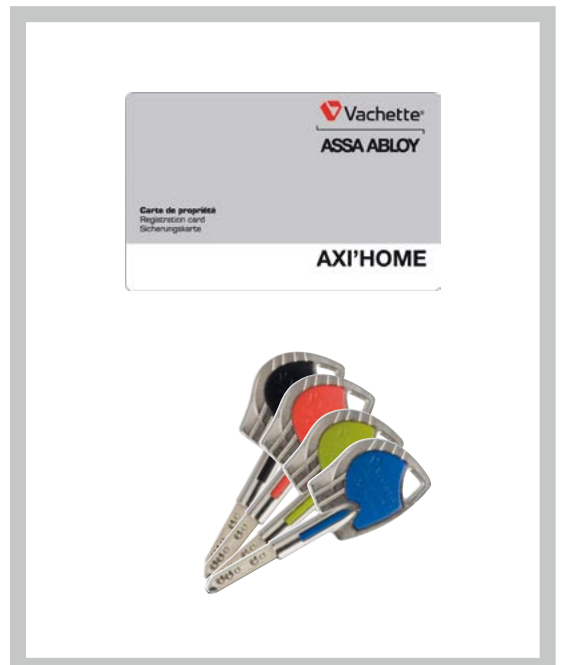
DESIGN

Original key design: attractive, modern, ergonomic. Distinguished design for each field of application (residential or commercial).

AVAILABLE IN SEVERAL VERSIONS

AXI'HOME Residential: AXI'HOME is rated A2P*(1), delivered with, has Keys in 4 colours and a key hole shutter.

AXI'TEC Commercial: focused on complex masterkey systems.



(1)A2P is the French anti-burglary label ranking from 1 to 3 stars.

CHOOSING THE RIGHT PRODUCT

For greater security choose a patented key system

The risk: uncontrolled key reproduction

Nowadays duplicating a key is simple with most non-protected systems. Anyone can go to a key cutting service and have a key duplicated anonymously : either for a key to your sweet apartment or to your office. Such simple and uncontrolled key duplication can be taken to excess, jeopardising the security of many premises.



The solution: patented key systems with controlled key duplication

To offset this drawback, Vachette introduced patented key systems. Only the manufacturer can make a copy of this type of key, and only on presentation of two codes: the code on the key itself, and the code on the registration card or security certificate. Only when both secret codes match can a key duplication be proceeded, which prevents a key duplicate to your apartment or to your office without your consent.

In a world where security is predominant, patented key systems are a genuine commitment to security for end-users. That is why these systems are widely used in both residential and commercial applications.



Vachette – increasingly sophisticated patents

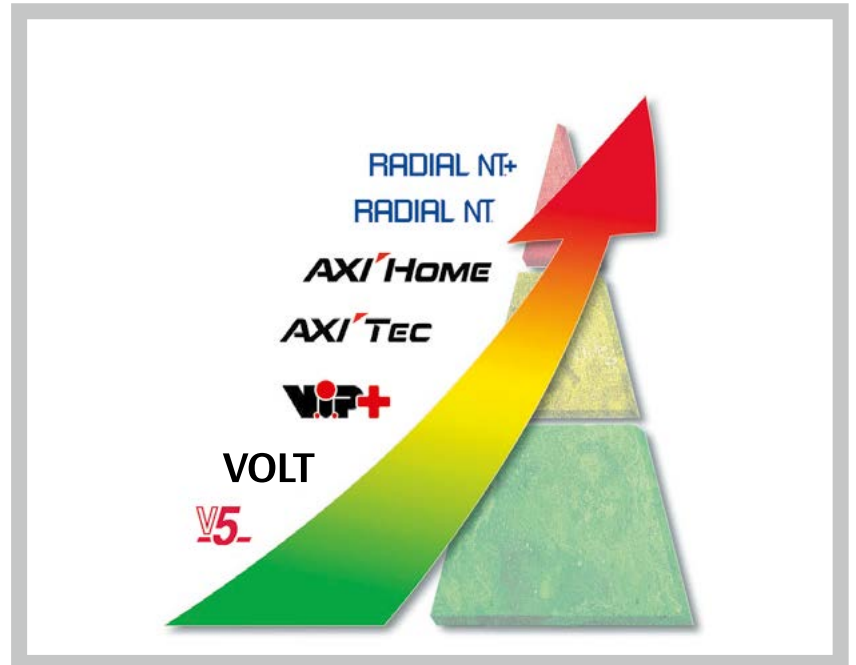
Vachette's patented key systems – RADIAL, VIP+ and VOLT – are the result of a continual quest to improve security. RADIAL offers one of the most sophisticated patents in the market place, with a guarantee against unauthorised key duplication. It is characterised by a triple active mobile, a huge leap forward in terms of protection against uncontrolled copies and also a remarkable technological innovation.

Nowadays, many non-protected, non patented products are marketed with a "cylinder card". In fact the card merely facilitates duplication and provides no guarantee of additional security.



CHOOSING THE RIGHT PRODUCT

A Vachette cylinder for each security level



Choosing the right cylinder

	RESIDENTIAL			
	DETACHED PROPERTIES	APARTMENTS		
		STANDARD	HIGH QUALITY	DE LUXE
RADIAL NT+	●		●	●
RADIAL NT	●		●	●
AXI'HOME	●		●	●
VIP+	●	●	●	●
VOLT	●		●	
V5	●	●		

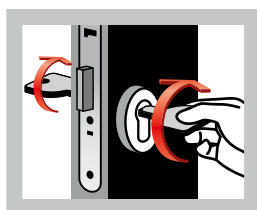
	SERVICE SECTOR						
	OFFICE INDUSTRY	INDUSTRY SHOPPING	LOCAL CENTRES	AUTHORITIES	HOSPITALS	SPORT	HOTEL
RADIAL NT+	●	●	●	●	●	●	●
RADIAL NT	●	●	●	●	●	●	●
AXI'TEC	●	●	●	●	●	●	●
VIP+	●	●	●	●	●	●	●
VOLT	●	●	●	●	●	●	●
V5	●	●	●	●		●	●

● Potentially suitable
 ● Suitable
 ● Ideally suitable

CHOOSING THE RIGHT PRODUCT

Adapted products for the residential sector

Vachette offers specific solutions for both new and renovated properties, with products long-tested and welcomed by end-users:



Function SYNKRO, the emergency key function, for greater convenience

The function SYNKRO allows you to unlock the door with another key, while a key was left inside in the lock unpretentiously.

A2P label for a higher security level

To improve your home's security, we recommend A2P cylinders and lock sets. These cylinders and lock sets were entitled A2P after severe tests under extreme conditions and can thus guarantee a better resistance against forced entry.

The A2P label: synonymous with resistance to forced entry and burglary

It is of the utmost importance to opt for a locking system with the A2P "Building Lock" label. This quality label is available to all manufacturers, and is granted by an official certification organisation recognised by Insurance professionals, the National Centre for Prevention and Protection [CNPP Certification].



The A2P label is awarded by an allocation committee made up of manufacturers, distributors, end-users, representatives of public authorities and bodies or personalities appointed for their respective areas of competence. A2P: 1 label, 3 security levels
The table below shows a comparison of some of the many criteria laboratory tested by professionals for the award of 1, 2 or 3 star classification.

Minimum resistance time to attempts at forced entry [cylinder-related]	Label *	Label **	Label ***
Non-destructive opening by tampering, picking, etc.	5 mins	10 mins	15 mins
Destructive opening by drilling the lock case, forcing the bolt and completely sawing off the bolt(s) activated by the central lock	5 mins	10 mins	15 mins
Destructive opening by fusing materials	-	10 mins	15 mins
Force applied for wrenching off the lock-case	400 daN [kg]	700 daN [kg]	900 daN [kg]
Compulsory sealed packaging concealing the key and making it inaccessible except by visibly tearing the packaging open			

For Commercial projects [offices, hospitals, local authorities, etc.] Finding the right answers



We offer a wide range of solutions ideally adapted to all of your requirements for projects in the service sector [sports facilities, offices, retail outlets, etc.]

Masterkey schedules for a more convenient and easy use

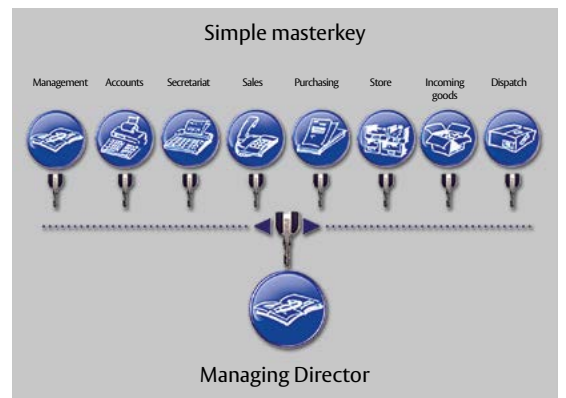
The hierarchical structures of MK (masterkey) or GMK (general masterkey plus sub-masterkeys) schedules allow you to organise access rights to your premises. Vachette's specialists will assist you in establishing your own schedule so that each person can get access to the right places.



While each Operations Director has a specific sub-masterkey giving him access to all the premises within his department, only the Managing Director's general masterkey allows access to all the offices and premises within the company.

A single key

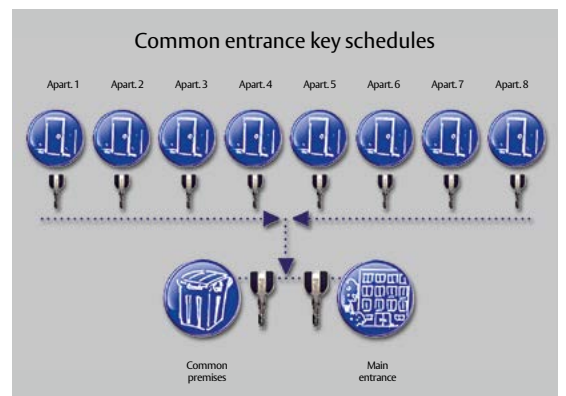
We recommend that you adopt the concept of a single key: it reduces the number of keys on your key ring, which makes for greater user convenience. It allows you to unlock several doors with one same key [entrance door, front gate, garage door, mail box, etc.].



Each workshop or office has its own individual differ key but the Managing Director has access to all the premises with his specific masterkey. This system is also often used for individual housing as well as hotels and public administration buildings.

Common entrance

Common entrance key schedules are used for blocks of flats. They consist of cylinders for common entrance doors which can be opened by all the tenants, such as main entrance, cellar doors, bicycle sheds, etc.



Each apartment can only be opened by the owner's or tenant's key, which also provides access to all the common premises: main entrance to the building, car park, cellars, bicycle sheds, etc.

CHOOSING THE RIGHT PRODUCT

The same key

unlocks all the doors of your principal and secondary residence as well as your office

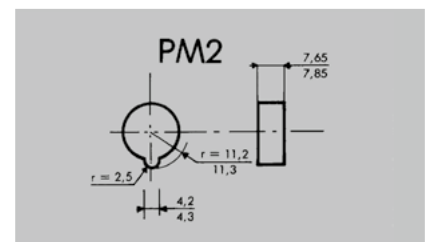
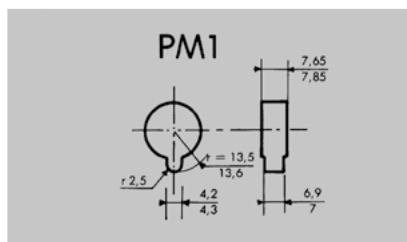
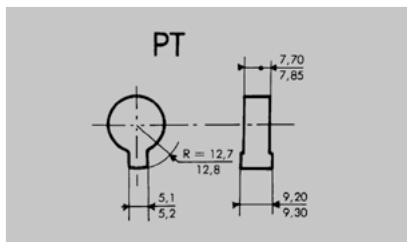
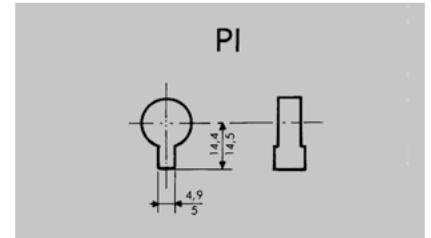
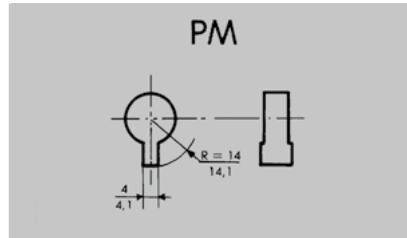
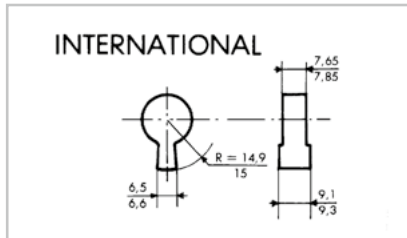


Ingenious concepts for greater convenience

The single key concept is available with different key systems and security levels



Special cam types

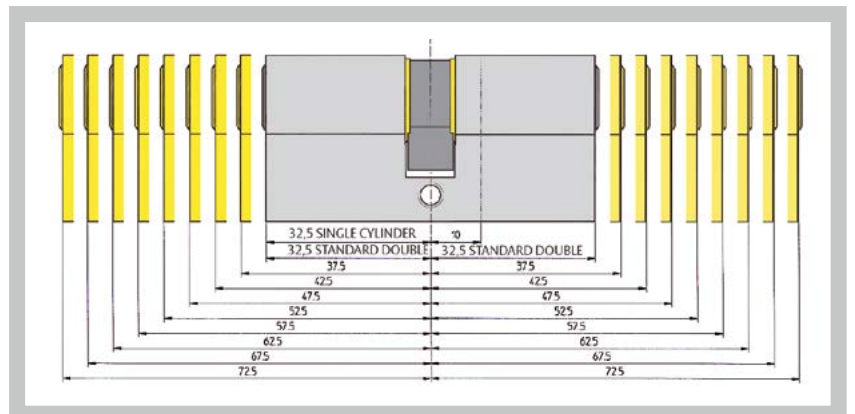


Extended Europrofile cylinders

Radial NT+ / NT system

When ordering asymmetrically extended cylinders, please always specify the outer dimension first.

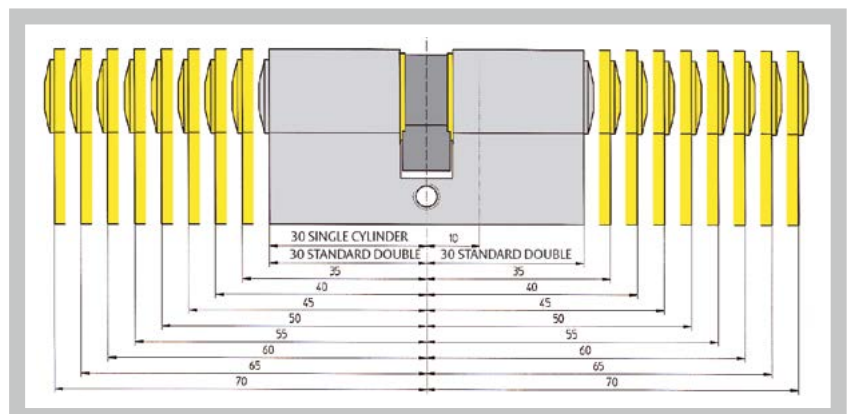
While equipping a VACHETTE lock, the handing of the cylinder is not required; while for locks of other marks, this information should be mentioned to ease the command and to prevent form misunderstandings.



AXI'Home, AXI'Tec, VIP+, VOLT and V5 systems

When ordering asymmetrically extended cylinders, please always specify the outer dimension first.

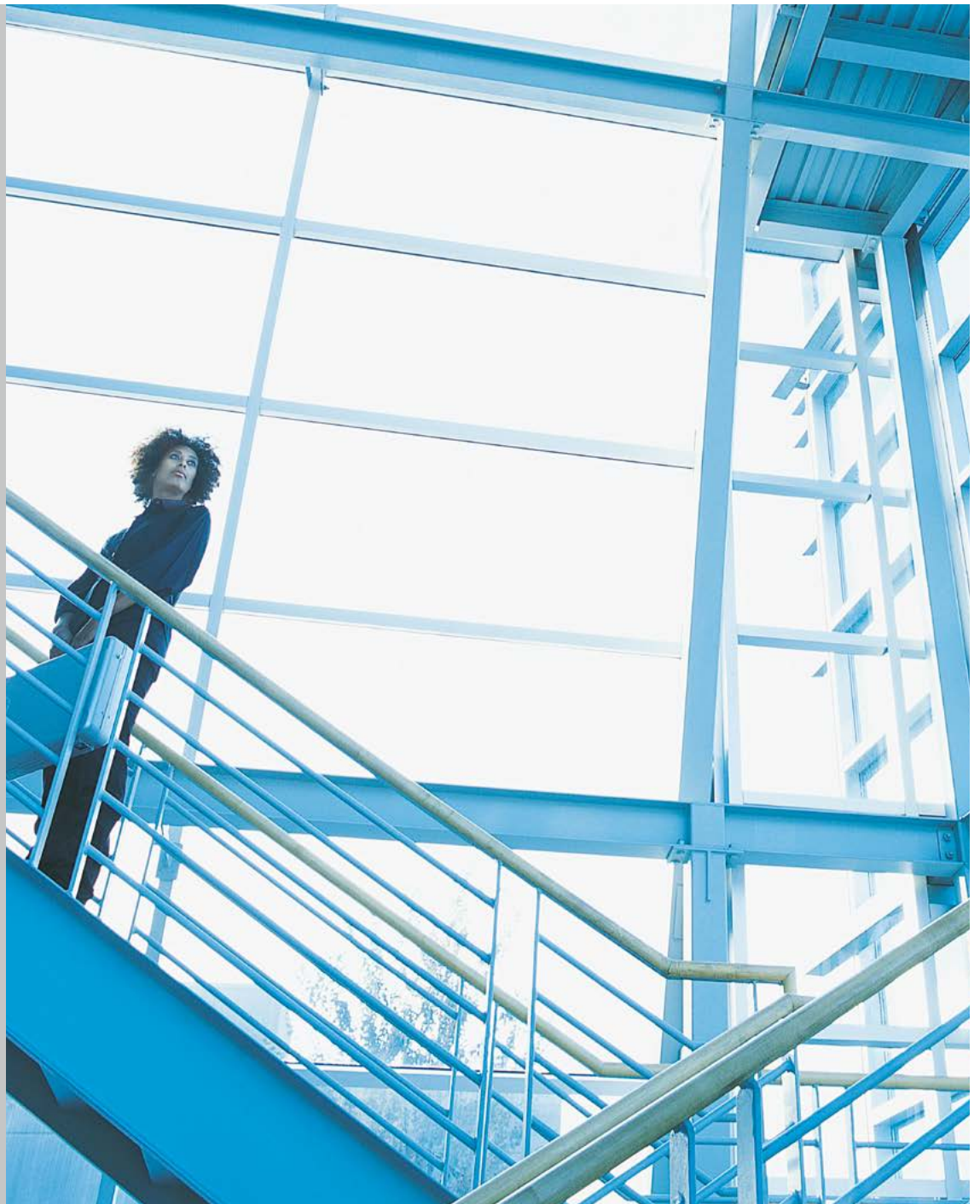
While equipping a VACHETTE lock, the handing of the cylinder is not required; while for locks of other marks, this information should be mentioned during the command.



RADIAL NT+/NT

Vachette's Ultimate security cylinder

The RADIAL NT and NT+ systems represents the state of the art in mechanical security today. With it's multidirectional pinning technology, the RADIAL flat key system offers ultimate protection against unauthorized key duplication. It is also an ideal solution for complex masterkey schedules.



Applications

A dual application range: residential and non-residential

The RADIAL system can be used in non-residential sites such as offices, hospitals, public-sector administration buildings, etc. Indeed its masterkey schedule capacity is particularly well suited to these types of premises.

On the other hand, its A2P version is particularly well adapted to ensuring the security of homes, not only in blocks of flats but also in detached properties. Together with an A2P certified lock it offers peace of mind to home owners as well as tenants.



Technical datas

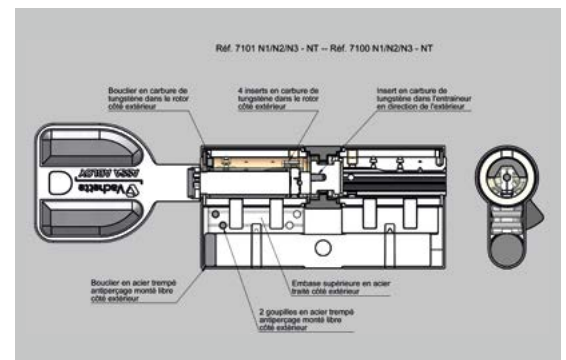


RADIAL NT+ / NT characteristics

- Flat key with international patent on 4 to 6 rows.
- Up to 32 pins.
- One billion differs.
- Hardened Steel base, reinforced resistance to forced entry.
- Transverse sliding pin with triple recognition system.
- Key section: 3.3 mm, Material: Nickel Silver.
- Torsion resistance: 10 Nm.
- Minimum dimensions:
 - Double cylinder 32.5 x 32.5 mm. (Extension in steps of 5 mm up to 72,5 x 72,5mm).
 - Single cylinder 32.5 x 10 mm. (Extension in steps of 5 mm up to 72,5 x 10mm).

RADIAL NT+ additional Anti-burglary characteristics

- Tungsten carbide protection shield.
- Anti-drill inserts.



Special features

Warranty
10 years

PATENTED KEY*

- Supplied with key registration card or security certificate.

SYSTEM REINFORCED

- By a breakage-resistant steel base.

RADIAL NT+ A2P FOR KEY DIFFERED

- Subject to the use of all approved (kite-marked) accessories, locks and strike plates.

* System protected by RADIAL patent valid until 2019 PCT / W099 / 49161.



Patented sliding pin system



User friendly key bow



High security Europrofile double cylinders

A2P*⁽¹⁾ cylinder. 4 keys. Minimum dimension: 32.5 x 32.5 mm.

Finishes	Reference	Description
Nickel plated / stainless steel (on masterkey schedules only)	7101 NT+ N1	For use with Vachette locks A2P*
	7101 NT+ N2	For use with Vachette locks A2P**
	7101 NT+ N3	For use with Vachette locks A2P***
Stainless steel with gold finish (on masterkey schedules only)	7100 NT+ N1	For use with Vachette locks A2P*
	7100 NT+ N2	For use with Vachette locks A2P**
	7100 NT+ N3	For use with Vachette locks A2P***
Two-tone finish (differ cylinders only)	7101 NT+ N1	For use with Vachette locks A2P*
	7101 NT+ N2	For use with Vachette locks A2P**
	7101 NT+ N3	For use with Vachette locks A2P***



Europrofile double cylinders

Double cylinder, 3 keys. Minimum dimension: 32.5 x 32.5 mm.

Finishes	Reference
Nickel plated / stainless steel (on masterkey schedules only)	7101 NT+
	7101 NT
Stainless steel with gold finish (on masterkey schedules only)	7100 NT+
	7100 NT
Two-tone finish (differ cylinders only)	7101 NT+
	7101 NT



Europrofile double cylinders with emergency key function

Double cylinder SYNKRO with emergency key function, characterised by nickel-plated cam. This function allows a door to be unlocked from either side even if a key is still inserted on the other side. 3 keys. Minimum dimension: 32.5 x 32.5 mm.

Finishes	Reference
Nickel plated / stainless steel (on masterkey schedules only)	FCS 7101 NT+
	FCS 7101 NT
Stainless steel with gold finish (on masterkey schedules only)	FCS 7100 NT+
	FCS 7100 NT
Two-tone finish (differ cylinders only)	FCS 7101 NT+
	FCS 7101 NT



Europrofile double cylinders with thumbturn

Cylinder with ergonomic thumbturn for installation on all door types. 3 keys. Minimum dimension: 32.5 x 32.5 mm.

Finishes	Reference
Nickel plated / stainless steel (on masterkey schedules only)	3111 NT+
	3111 NT
Stainless steel with gold finish (on masterkey schedules only)	3110 NT+
	3110 NT
Two-tone finish (differ cylinders only)	3111 NT+
	3111 NT

RADIAL NT+/NT



Europrofile double cylinders with disengaging thumbturn

Cylinder with thumbturn allowing the door to be unlocked by key even if the thumbturn is being held and/or blocked by someone inside. 3 keys.

Minimum dimension: 32.5 x 32.5 mm. Maximum length on thumbturn side: 42.5 mm.

Finishes	Reference
Nickel plated / stainless steel (on masterkey schedules only)	DEB 3111 NT+
	DEB 3111 NT
Stainless steel with gold finish (on masterkey schedules only)	DEB 3110 NT+
	DEB 3110 NT
Two-tone finish (differ cylinders only)	DEB 3111 NT+
	DEB 3111 NT



High security Europrofile single cylinders

Single cylinder WITH ADJUSTABLE CAM A2P⁽¹⁾. 4 keys.

Minimum dimension: 32.5 x 10 mm.

Finishes	Reference	Description
Nickel plated / stainless steel (on masterkey schedules only)	5101 NT+ N1	For use with Vachette locks A2P*
	5101 NT+ N2	For use with Vachette locks A2P**
	5101 NT+ N3	For use with Vachette locks A2P***
Stainless steel with gold finish (on masterkey schedules only)	5100 NT+ N1	For use with Vachette locks A2P*
	5100 NT+ N2	For use with Vachette locks A2P**
	5100 NT+ N3	For use with Vachette locks A2P***
Two-tone finish (differ cylinders only)	5101 NT+ N1	For use with Vachette locks A2P*
	5101 NT+ N2	For use with Vachette locks A2P**
	5101 NT+ N3	For use with Vachette locks A2P***



Single Europrofile cylinders

Single cylinder WITH ADJUSTABLE CAM. 3 keys. Minimum dimension: 32.5 x 10 mm.

Finishes	Reference
Nickel plated / stainless steel (on masterkey schedules only)	5101 NT+
	5101 NT
Stainless steel with gold finish (on masterkey schedules only)	5101 NT+
	5101 NT
Two-tone finish (differ cylinders only)	5101 NT+
	5101 NT



ANSI mortise cylinder

ANSI mortise cylinder 1 1/4" with 13 to 32 multidirectional pins, 3 nickel silver keys, nickel plated. Other dimensions upon request.

Finishes	Reference
Nickel plated	8101 NT



Extensible cylinder

Satin nickel-plated cylinder, 27 mm, 13 to 32, 3 nickel silver keys, brass finish P or chrome finish M.

Finishes	Reference
Nickel plated	V55 NT



Cam lock cylinder

3 keys, cam F or K or N.

Finishes	Reference
Nickel	5166 NT
Brass finish	5166 P NT



Switch locks cylinder

For electrically operated door opening systems. Brass cylinder 25 mm, length 28 mm, 13 to 32, 3 nickel silver keys, brass finish P or chrome finish M.

Finishes	Reference
Brass finish P	V56 NT

For electrically operated door opening systems. Brass cylinder 25 mm, length 66 mm, 13 to 32, 3 nickel silver keys, 1 micro-switch, chrome finish M.

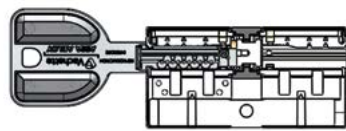
Finishes	Reference
Chrome finish M	V57 M NT

For main entrance doors to buildings. Brass cylinder, 13 to 32, 1 micro-switch, 3 nickel silver keys, chrome finish M.

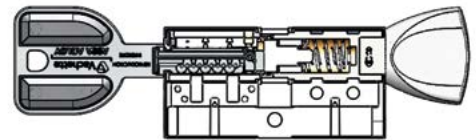
Finishes	Reference
Chrome finish M	V555 NT

RADIAL NT+/NT

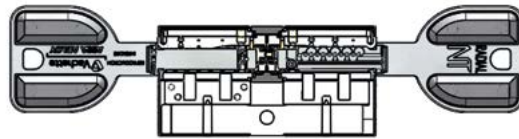
Technical drawings



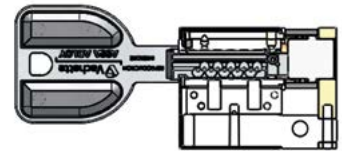
Ref. 7101 NT - Ref. 7100 NT



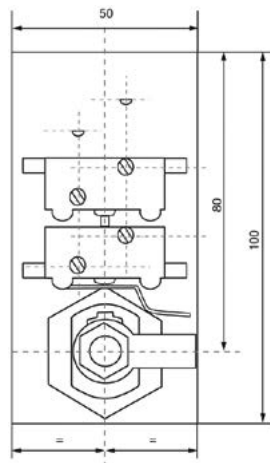
Ref. 3111 NT - Ref. 3110 NT



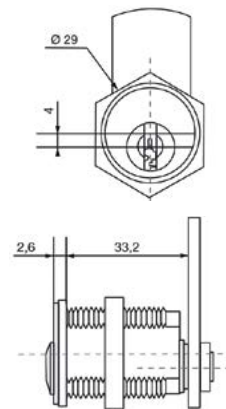
Ref. FCS 7101 NT - Réf FCS 7100 NT



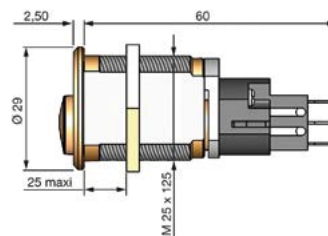
Ref. 5101 NT - Ref. 5100 NT



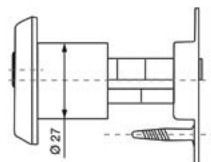
Ref. V56



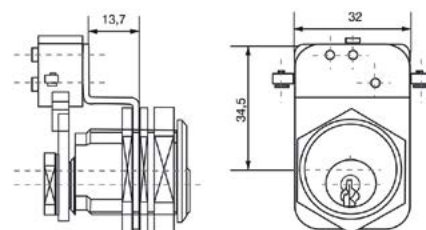
Ref. 5166M - 5166P



Ref. V57



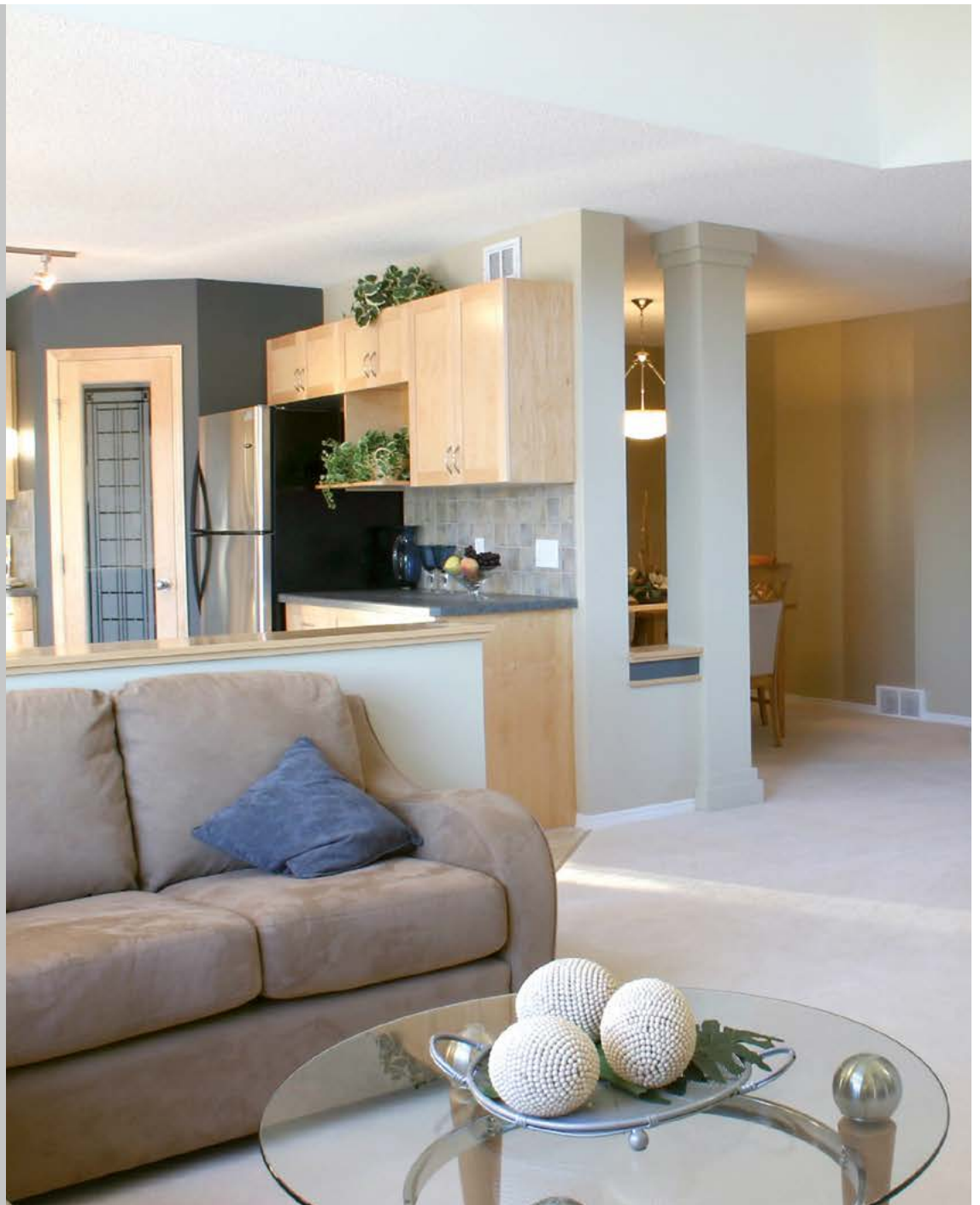
Ref. V55



Ref. V555

Vachette innovates
for properties'
security

With their most recent device, AXI'HOME key and cylinder, Vachette innovates for the security of homes, both in blocks of flats and in detached properties. Dedicated to residential sites, this cylinder meets the increasing security requirements in terms of design and convenience.



Applications

A cylinder dedicated to residential sites

The AXI'HOME system is available in key differ or masterkey schedules. It obtained A2P⁽¹⁾ label if installed with the locks and strikes certified by Vachette.



Thus this cylinder is ideal for the security of properties (blocks of flats or detached houses). The AXI'HOME system is available in standard version with Keys in 4 colours (black, red, green and blue) and a shutter at the outer side to protect the key hole.

Technical datas



- Brass plated or nickel plated finish.
- Key with prohibited duplication without any time limit.
- System protected by a 3D Trademark registration.
- System with multidirectional pins.

Cylinder to differ:

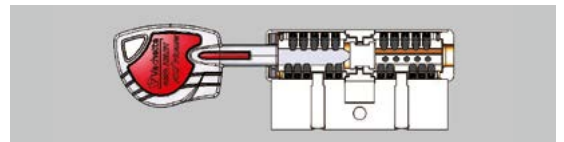
- 15 pins on 3 rows.
- 10,000,000 differs.

Masterkey Schedule:

- Up to 23 pins on 5 rows.
- Tungsten carbide protection shield (rotor).
- Anti-drill insert in tempered steel (stator).
- Stainless steel pins for better mechanical resistance (anti-picking) and protection against corrosion.
- Key blank made of nickel silver.
- Torsion resistance: 8 N.m.
- Shutter on the outer side as standard (optional: inner side): dust proof.

- Minimum dimensions standard range:
 - Double cylinder 30 x 30 mm (extension in steps of 5 mm).
 - For dimensions exceeding a total length of 140 mm, please contact us.*
 - Single cylinder 30 x 10 mm (extension in steps of 5 mm).
 - For dimensions exceeding 80 mm, please contact us.*
- Shortened cylinder range:
 - Double cylinder 27.5 x 27.5 mm (without shutter).

⁽¹⁾ In order to keep their certification, the products must be installed with the lock, the strike and the AP2 certified accessories and sold by Vachette.



Special features

Warranty
10years

LONG LASTING

- Controlled key duplication for life. 3D Trademark registration key systems: reproduction forbidden except in our factories.

RELIABILITY AND SECURITY

- A2P⁽¹⁾ compatible cylinder. Equipped with a shutter as standard on the outer side.

DESIGN, ERGONOMY, CONVENIENCE

- Dual-material ring.

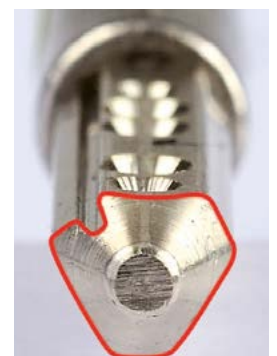
- Key shank in 3 dimensions: functional, secure and attractive.

KEYED TO DIFFER AND MASTERKEY SCHEDULE

- Hierarchical organisation of the protected doors (central opening, masterkey, etc).

4 KEYS WITH DIFFERENT COLOURS

- Everyone has got his/her key with his/her own colour!





Europrofile double cylinders A2P⁽¹⁾

A2P⁽¹⁾ compatible cylinder. Keys in 4 colours (black, red, green and blue). Shield standard on the outer side. Minimum dimension: 30 x 30 mm.

Finishes	Reference	Description
Nickel plated	7101 AXI'HOME N1	For use with Vachette locks A2P*
Brass finish	7100 AXI'HOME N1	For use with Vachette locks A2P*



Europrofile double cylinders, short execution A2P⁽¹⁾

A2P⁽¹⁾ compatible cylinder. Keys in 4 colours (black, red, green and blue). Dimension: 27.5 x 27.5 mm (without shield).

Finishes	Reference	Description
Nickel plated	7011 AXI'HOME N1	For use with Vachette locks A2P*
Brass finish	7010 AXI'HOME N1	For use with Vachette locks A2P*



Europrofile double cylinders Synkro A2P⁽¹⁾

Double cylinder SYNKRO compatible with A2P*. This function allows to unlock the door when the key has been left inserted in the lock inside. Gives a feeling of security if children or old people are at home. Keys in 4 colours (black, red, green and blue). Shield standard on the outer side. Minimum dimension: 30 x 30 mm.

Finishes	Reference	Description
Nickel plated	FCS 7101 AXI'HOME N1	For use with Vachette locks A2P*
Brass finish	FCS 7100 AXI'HOME N1	For use with Vachette locks A2P*



Europrofile double cylinder with thumb turn A2P⁽¹⁾

A2P⁽¹⁾ compatible cylinder. Cylinder fitted with an ergonomic thumb turn for use on any types of doors. Keys in 4 colours (black, red, green and blue). Shield standard. Minimum dimension: 30 x 30 mm.

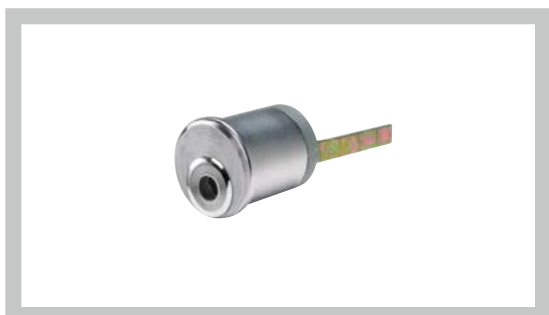
Finishes	Reference	Description
Nickel plated	3111 AXI'HOME N1	For use with Vachette locks A2P*
Brass finish	3110 AXI'HOME N1	For use with Vachette locks A2P*



Europrofile single cylinder A2P⁽¹⁾

Single cylinder with ADJUSTABLE CAM. A2P⁽¹⁾ compatible. Keys in 4 colours (black, red, green and blue). Shield standard. Minimum dimension: 30 x 10 mm.

Finishes	Reference	Description
Nickel plated	5101 AXI'HOME N1	For use with Vachette locks A2P*
Brass finish	5100 AXI'HOME N1	For use with Vachette locks A2P*



Extensible rim cylinder

Extensible rim cylinder, Keys in 4 colours.

Finishes	Reference
Nickel plated	V55 M AXI'HOME



Cam lock cylinder

Cylinder camlock for letter boxes with cam F, K or N, Keys in 4 colours.

Finishes	Reference
Nickel plated	5166 M AXI'HOME
Brass finish	5166 P AXI'HOME



Switch locks cylinder

Switch cylinder for electric gates, fitted on a plate, 2 micro-switches, nickel plated, Keys in 4 colours.

Finishes	Reference
Nickel plated	V56 M AXI'HOME

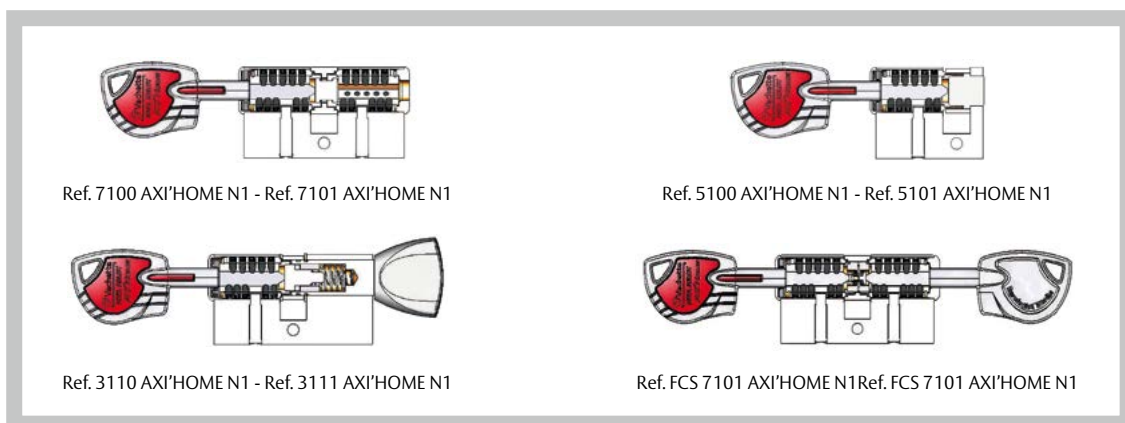
Switch cylinder for electric gates with double compact built-in switches, Keys in 4 colours.

Finishes	Reference
Nickel plated	V57 M AXI'HOME

Switch cylinder for building entrance fitted on an angle plate, 1 micro-switch, Keys in 4 colours.

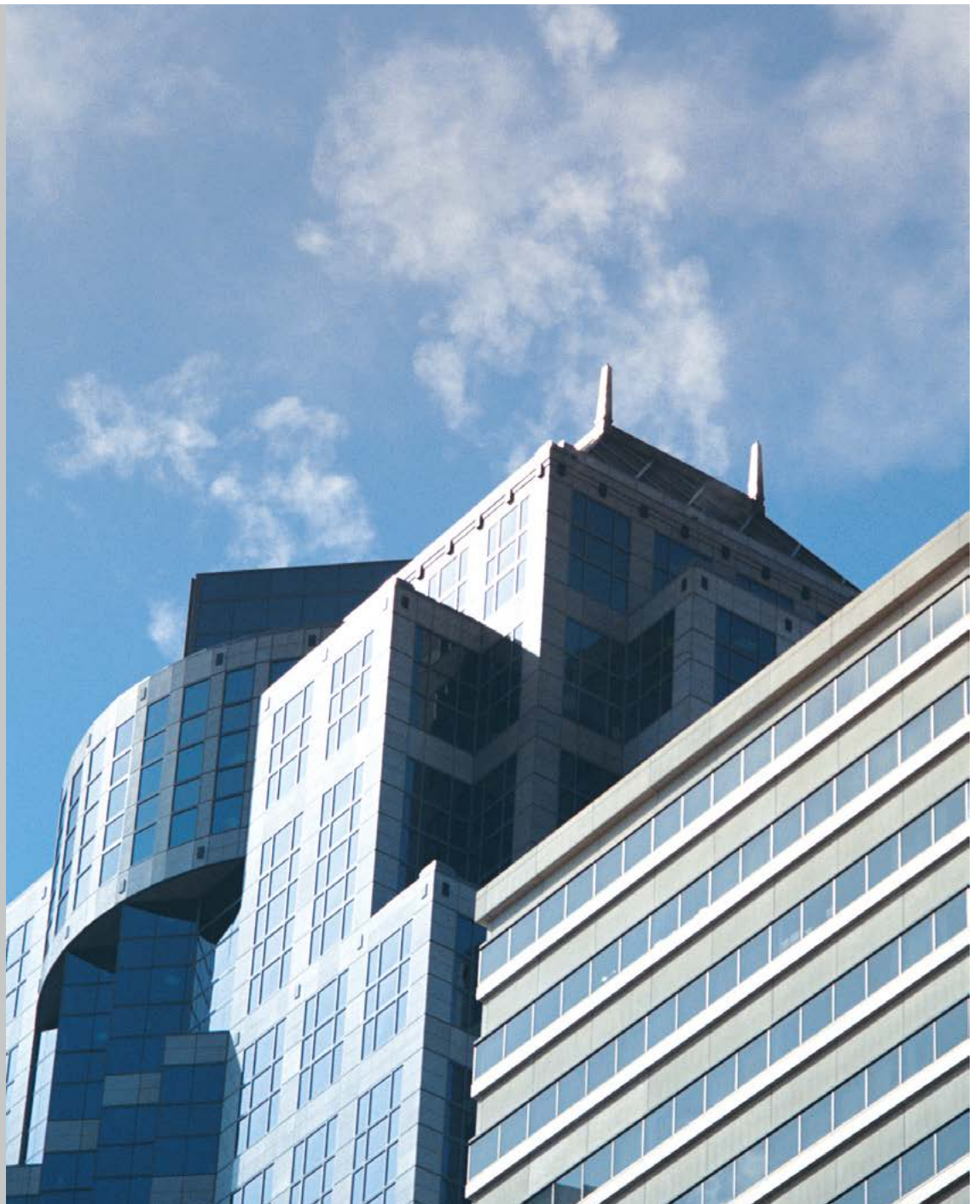
Finishes	Reference
Nickel plated	V555 M AXI'HOME

Technical drawings



Vachette keeps innovating for the security of service sites

The AXI'TEC key and cylinder set integrates the latest development for the security of commercial sites. Available on materkey schedule only, this system can satisfy the most demanding non-residential sites for complex hierachical organisation.



Applications

The cylinder dedicated to commercial projects

AXI'TEC system is available on masterkey schedule only.

It has a high level of hierarchical organisation capacity which can meet any needs of non-residential sites such as offices, hospitals, local administration buildings, authorities...



Technical datas



- Nickel plated.
- Life-time key-duplication protection.
- Protected by a 3D Trademark registration.
- On masterkey schedule only.
Cylinder with multidirectional pins, up to 29 pins on 5 rows.
- Stainless steel pins for better mechanical resistance (anti-drilling) and protection against corrosion.
- Key blank made of nickel silver alloy.
- Torsion resistance: 8 N.m.
- Minimum dimensions:
 - Double cylinder 30 x 30 mm (extension in steps of 5 mm).
For a total length exceeding 140 mm, please contact us.
 - Single cylinder 30 x 10 mm (extension in steps of 5 mm).
For a total length exceeding 80 mm, please contact us.
- Shortened cylinder range:
 - Double cylinder 27.5 x 27.5 mm.

Special features

Warranty
10years

AVAILABLE IN SEVERAL VERSIONS

- Large possibilities on complex masterkey schedules.
- The right answer to all the issues in connection with the building industry.

DURABILITY

- Life-time key duplication protection.
- Cylinder combining performance and security.

DESIGN

- Ergonomic ring.
- Key blank in 3 dimensions.





Europrofile double cylinders

Double cylinder. 3 keys. Minimum dimension: 30 x 30 mm.

Finishes	Reference
Nickel plated	7101 AXI'TEC



Europrofile double cylinder with thumb turn

Cylinder fitted with an ergonomic thumb turn for installation on any type of doors. 3 keys. Minimum dimension: 30 x 30 mm.

Finishes	Reference
Nickel plated	3111 AXI'TEC



Europrofile single cylinder

Single cylinder with ADJUSTABLE CAM. 3 keys. Minimum dimension: 30 x 10 mm.

Finishes	Reference
Nickel plated	5101 AXI'TEC



Europrofile double cylinders Synkro

Double cylinder SYNKRO. This function allows to unlock the door when the key has been left inserted inside. Especially suitable when children or old people are left at home. 3 keys. Minimum dimension: 30 x 30 mm.

Finishes	Reference
Nickel plated	FCS 7101 AXI'TEC

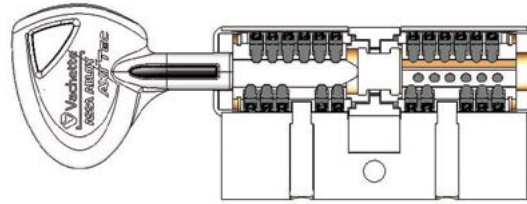


Europrofile double cylinders, short execution

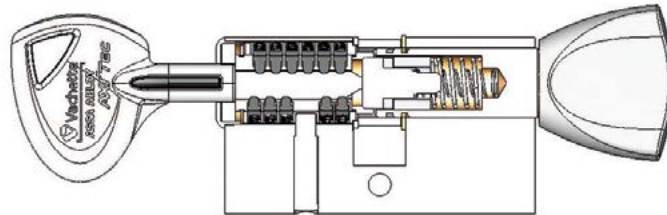
Double cylinder. 3 keys. Dimension: 27.5 x 27.5 mm.

Finishes	Reference
Nickel plated	7011 AXI'TEC

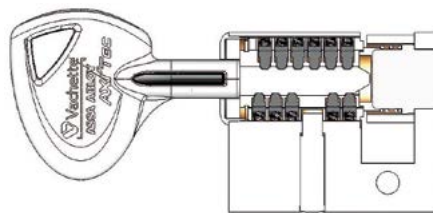
Technical drawings



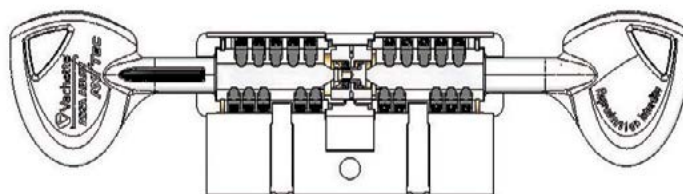
Ref. 7101 AXI'TEC - Ref. 7011 AXI'TEC



Ref. 3111 AXI'TEC



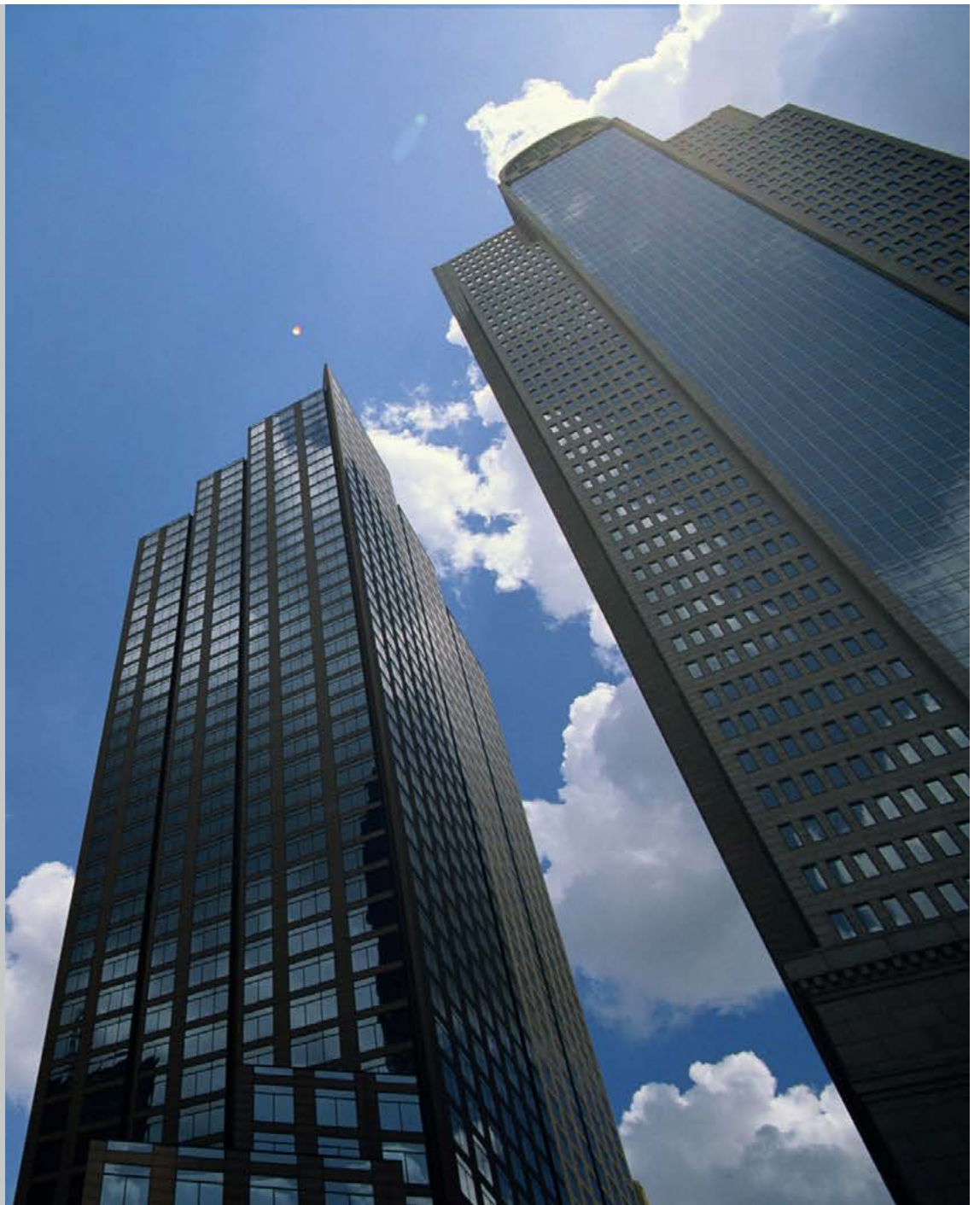
Ref. 5101 AXI'TEC



Ref. FCS 7101 AXI'TEC

Vachette's High security cylinder

With its two-directional pinning technology, the VIP+ system allows complex masterkey schedules. It offers protection against unauthorised key-duplication until 2030.



Applications

A solution for masterkey schedules in the non-residential sector

The VIP+ system offers a high capacity for master key systems.

It also offers an A2P version for residential applications.

With its high security level the VIP+ system qualifies for the A2P* label when used with the certified Vachette locks and strike plates.



Technical datas



- Two-directional pinning system:
 - 14 to 23 pins on 4 to 5 rows.
 - mushroom" (anti picking) type pins.
 - Stainless Steel passive pins anti-pick profile.
 - N1 version with anti-drilling hardened steel pins.
 - Key section: 3 mm, material: nickel silver.
Torsion resistance: 10 Nm.
 - Over 32 million differs.
 - Housing: one-piece, in solid nickel-plated brass.
 - Plug: solid nickel-plated brass, grooved dome head for easier key insertion and improved resistance against picking.
- System is protected by patent valid until 2030
- Minimum dimensions:
 - Double cylinder 30 x 30 mm.
(Extension in steps of 5 mm up to 70 x 70mm).
 - Single cylinder 30 x 10 mm.
(Extension in steps of 5 mm up to 70 x 10mm).

Special features

Warranty
5 years

PATENTED KEY*

- Supplied with key registration card or security certificate.

**System is protected by patent valid until 2030*

VIP+ A2P

- Subject to the use of all approved accessories, locks and strike plates.
- Very high anti-pick resistance.





Europrofile double cylinders

Double cylinder. 3 keys. Minimum dimension: 30 x 30 mm.

Finishes	Reference
Nickel plated	7101 VIP+



Europrofile double cylinder with thumbturn

Cylinder with ergonomic thumbturn for installation on all door types. 3 keys. Minimum dimension: 30 x 30 mm.

Finishes	Reference
Nickel plated	3111 VIP+



Single Europrofile cylinder

Single cylinder with adjustable cam. 3 keys. Minimum dimension: 30 x 10 mm.

Finishes	Reference
Nickel plated	5101 VIP+



Europrofile double cylinder with emergency key function

Double cylinder SYNKRO with emergency key function, characterised by nickel-plated cam. This function allows a door to be unlocked from either side even if a key is still inserted on the other side. 3 keys. Minimum dimension: 30 x 30 mm up to 70 x 70 mm.

Finishes	Reference
Nickel plated	FCS 7101 VIP+



High security anti-drill Europrofile double cylinder

Cylinder A2P⁽¹⁾. Double cylinder with anti-drill inserts. 3 keys. Minimum dimension: 30 x 30 mm.

Finishes	Reference	Description
Nickel plated	7101 VIP+ N1	For use with Vachette locks A2P*

High security anti-drilling Europrofile single cylinder

Cylinder A2P⁽¹⁾. Single cylinder with adjustable cam.
3 keys. Minimum dimension: 30 x 10 mm.

Finishes	Reference	Description
Nickel plated	5101 VIP+ N1	For use with Vachette locks A2P*

⁽¹⁾ FOR A2P LABELLED PRODUCT:
A2P labelled product must be installed with all accessories listed in our catalogue. The A2P certification applies only for products installed as a set as described in the following pages.

Cam lock cylinder

3 keys, cam F, K or N.

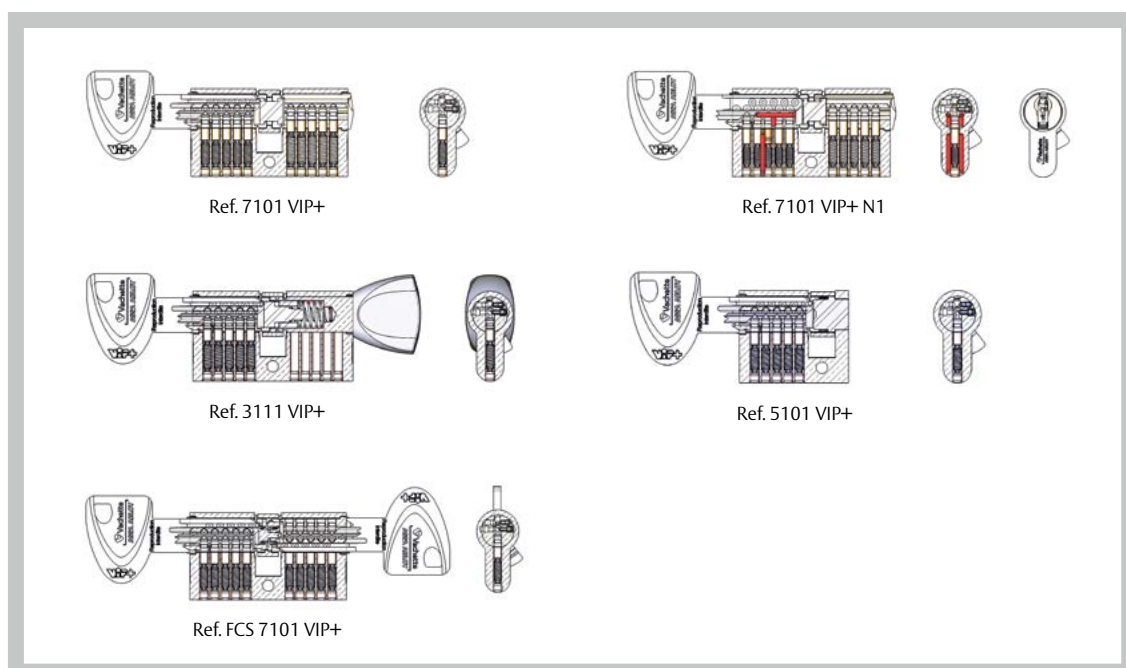
Finishes	Reference
Nickel plated	5166 VIP+

Switch lock cylinder

For main entrance doors to buildings, 1 micro-switch, 3 keys.

Finishes	Reference
Nickel plated	V555 VIP+

Technical drawings



The comfort of a patented flat key system

The convenience of a flat key.

The new VOLT cylinder is suitable for residential and commercial applications. Its cylinder and patent protected key offers high level of performance in terms of hierarchical capacity. Available in A2P*⁽¹⁾.

⁽¹⁾ In order to keep their certification, the products must be installed with the lock, the strike and the A2P certified accessories and sold by Vachette.



Applications

The VOLT system can be used in both residential and commercial sites. Its A2P version is particularly well adapted to ensure the security of residential sites. It can offer a high master key capacity as well.



Technical datas



Cylinder

- Nickel plated
- Adjustable cam for single cylinder
- Minimum dimensions :
 - Double cylinder 30 x 30 mm (extension in steps of 5 mm). For dimensions exceeding 140 mm, please contact us.
 - Single cylinder 30 x 10 mm (extension in steps of 5 mm). For dimensions exceeding 80 mm, please contact us.
- Available in switch lock and cam lock versions.
- Compatible with padlock masterkey schedule.

Key

- Dome headed plug with groove for higher torque resistance and easy key insertion.
- In A2P version, supplied with 4 keys and identification stickers in 9 colours.
- In standard version with 3 keys.
- Thickness: 3,2 mm
- Key bow, easy grip, satin chrome finish.

Special features

Warranty
5 years

SECURITY

- Supplied with key registration card or security certificate with new design and Satin Chrome finish
- System is protected by patent valid until 2030 on the cylinder and the key

AVAILABLE IN SEVERAL VERSIONS

- Large possibilities on complex masterkey schedules

- Product range : double cylinder, single cylinder and cylinder with thumb
- Available in key differ (6 pins) and on masterkey system (until 18 pins multidirectionnal)
- Available in standard version and A2P⁽¹⁾ version on simple or complex masterkey systems:
 - Central opening
 - Masterkey systems: MK, GMK, CGMK

COMFORT

- Reversible flat key for easy and convenient use
- 9 colour identification stickers available in it A2P version

OPTION

- Double cylinder SYNKRO with emergency key function in standard and A2P version
- Disengage cylinder in standard and A2P version

RESISTANCE

- Anti-picking tempered steel pins
- Anti-bumping pins / Anti-drilling pins
- Tungsten carbide protection inserts (A2P version)
- Torsion resistance : 10 N.m
- Nickel silver key

⁽¹⁾ In order to keep their certification, the products must be installed with the lock, the strike and the A2P certified accessories and sold by Vachette.



Europrofile double cylinder

Double cylinder, 3 keys. In A2P version 4 keys. Minimum dimension: 30 x 30 mm.

Finishes	Reference
Nickel plated	7101 VOLT



Europrofile double cylinders Synkro

Double cylinder Synkro. This function allows to unlock the door when the key has been left inserted in the lock inside. Suitable when children or old people are left at home. 3 keys. In A2P version 4 keys. Minimum dimension: 30 x 30 mm.

Finishes	Reference
Nickel plated	FCS 7101 VOLT



Europrofile double cylinder with thumb turn

Cylinder fitted with an ergonomic thumb turn, which may be fitted on any types of doors. 3 keys. In A2P version 4 keys. Minimum dimension: 30 x 30 mm.

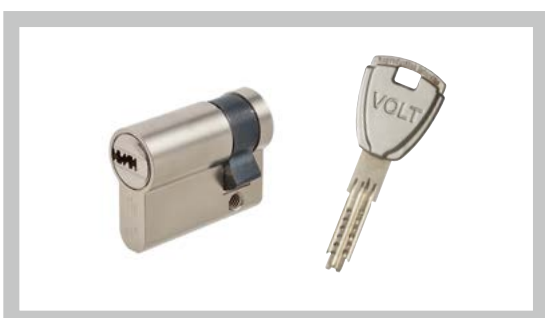
Finishes	Reference
Nickel plated	3111 VOLT



Europrofile double disengage cylinder with thumb turn

Cylinder fitted with an ergonomic thumb turn, which may be fitted on any types of doors. 3 keys. In A2P version 4 keys. Minimum dimension: 30 x 30 mm.

Finishes	Reference
Nickel plated	3111 DEB VOLT

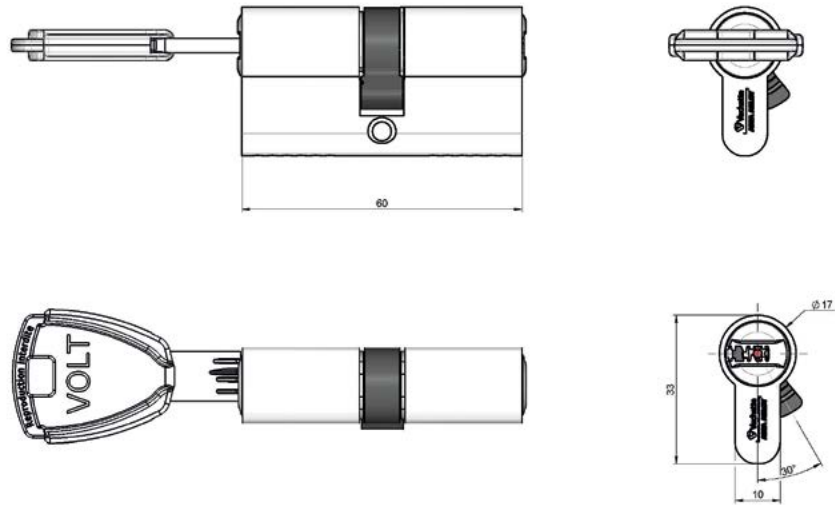


Europrofile single cylinder

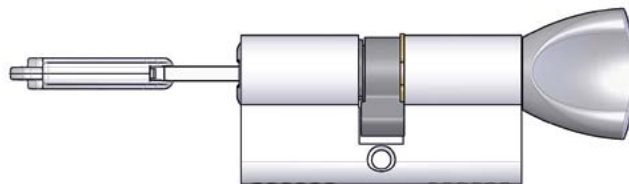
Single cylinder with ADJUSTABLE CAM. 3 keys. In A2P version 4 keys. Minimum dimension: 30 x 10 mm.

Finishes	Reference
Nickel plated	5101 VOLT

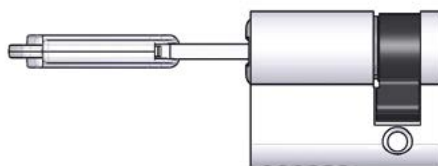
Technical drawings



Ref. 7101 VOLT



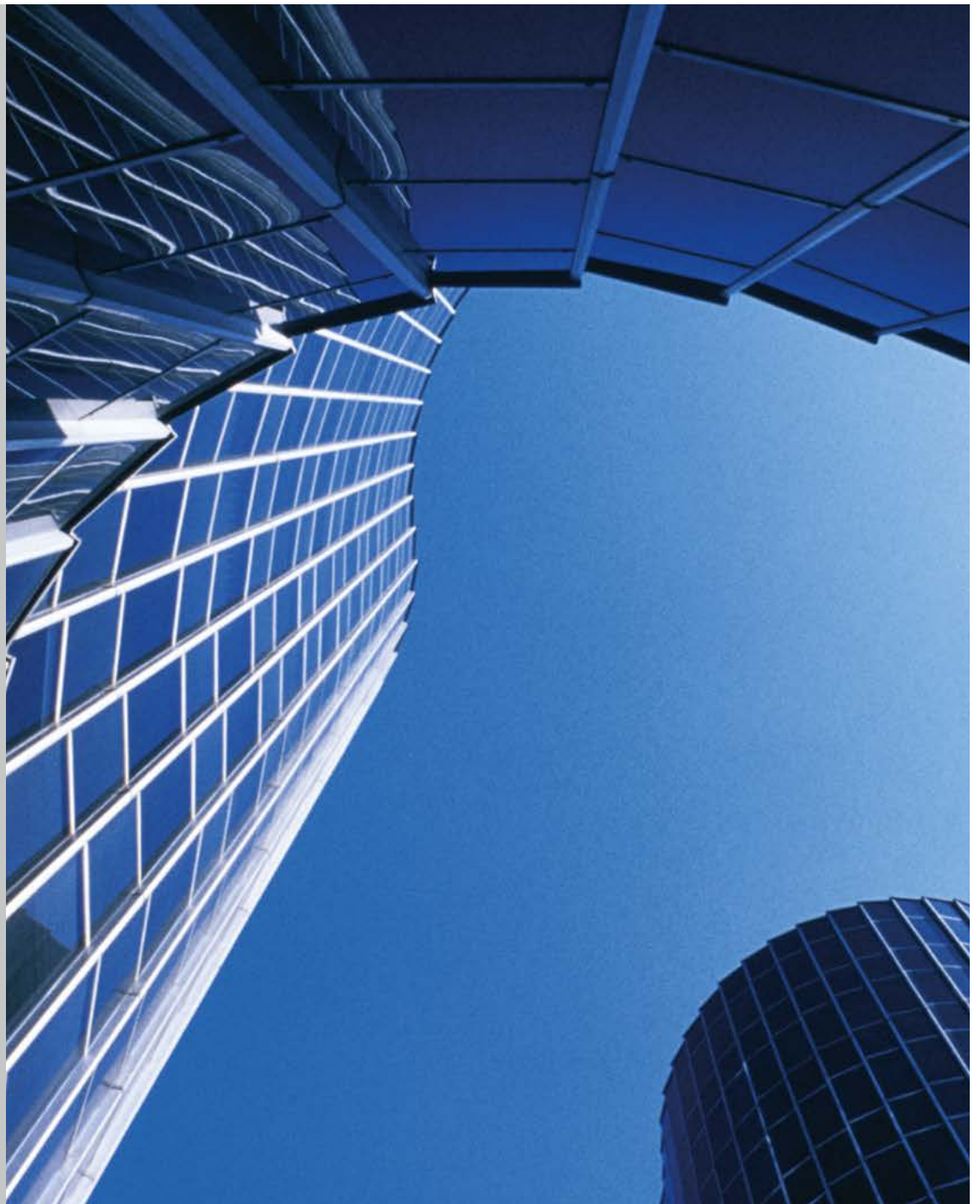
Ref. 3111 VOLT



Ref. 5101 VOLT

Vachette's Classic Security cylinder

The V5 System offers good protection against picking.
The extensive number of key profile allows very complex masterkey schedule.



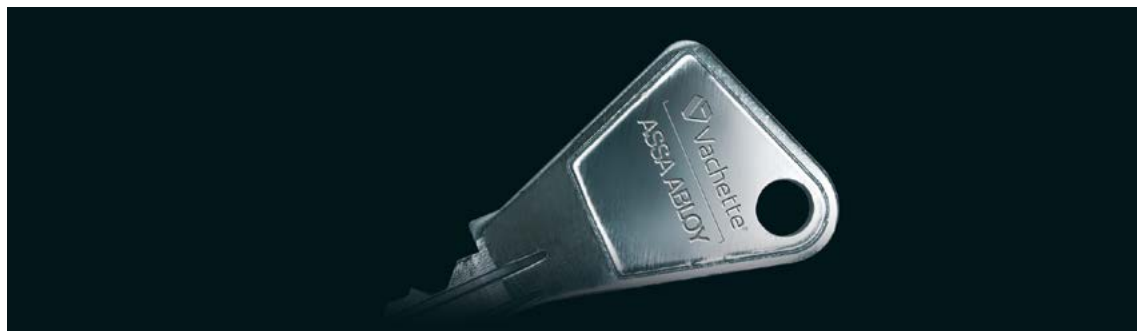
Applications

A well adapted concept

The V5 system has been designed particularly for office premises and private properties that require hierarchical locking structures.



Technical datas



- 5 anti-picking pins, in line.
- 3 keys:
 - in steel (differ cylinders), 2.2 mm cross section.
 - in nickel silver (masterkeyed cylinders), 2.7 mm cross section, 8 N.m torque resistance.
- Housing: one-piece, solid brass.
- 15,000 differs.
- HS version with anti-drilling hardened steel pins.
- Plug:
 - dome head for easier key insertion and improved resistance against twisting the key.
 - Presence of a groove to hold the key shoulder, improving the resistance to twisting.
- Dimensions:
 - Double cylinder 30 x 30 mm. (Extension in steps of 5 mm up to 70 x 70 mm).
 - Single cylinder 30 x 10 mm. (Extension in steps of 5 mm up to 70 x 10 mm).

Special features

Warranty
2 years

- Anti-picking pins.
- Compatible with all types of masterkey schedules.
- Ergonomic key.





Europrofile double cylinders

Double cylinder. 3 keys. Minimum dimension: 30 x 30 mm.

Finishes	Reference
Nickel plated	7101
Brass finish	7100



Europrofile double cylinder with thumbturn

Cylinder with ergonomic thumbturn for installation on all door types. 3 keys. Minimum dimension: 30 x 30 mm.

Finishes	Reference
Nickel plated	3111
Brass finish	3110



High security anti-drill Europrofile double cylinder

Double cylinder with anti-drill inserts for better resistance against forced entry. 3 keys. Minimum dimension: 30 x 30 mm.

Finishes	Reference
Nickel plated	7101 HS



Single Europrofile cylinders

Single cylinder WITH ADJUSTABLE CAM. 3 keys. Minimum dimension: 30 x 10 mm

Finishes	Reference
Nickel plated	5101
Brass finish	5100



Europrofile double cylinders with emergency key function

Double cylinder SYNKRO with emergency key function, characterised by nickel-plated cam. This function allows a door to be unlocked from either side even if a key is still inserted on the other side. 3 keys. Minimum dimension: 30 x 30 mm.

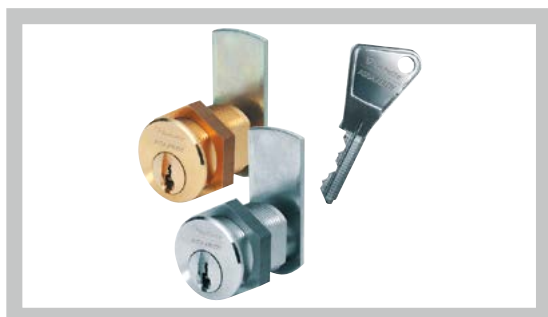
Finishes	Reference
Nickel plated	FCS 7101
Brass finish	FCS 7100



Extensible cylinder

Satin nickel-plated cylinder, 27 mm, 5 pins, 3 nickel silver keys, brass finish P or chrome finish M.

Finishes	Reference
Brass finish	V55



Cam lock cylinder

3 keys, cam F or K or N.

Finishes	Reference
Nickel plated	5166 M
Brass finish	5166 P



Switch locks cylinder

For electrically operated door opening systems.

Brass cylinder 25 mm, length 28 mm, 5 pins, 3 nickel silver keys.

Finishes	Reference
Brass finish P	V56

For electrically operated door opening systems.

Brass cylinder 25 mm, length 66 mm, 5 pins, 3 nickel silver keys, 1 micro-switch.

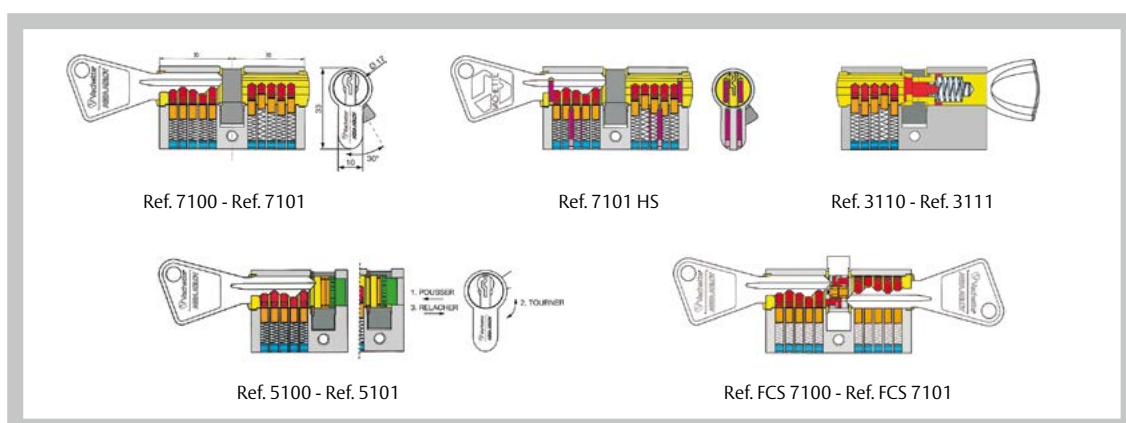
Finishes	Reference
Chrome finish M	V57 M

For main entrance doors to buildings.

Brass cylinder, satin chrome finish, 5 pins, 1 micro-switch, 3 nickel silver keys.

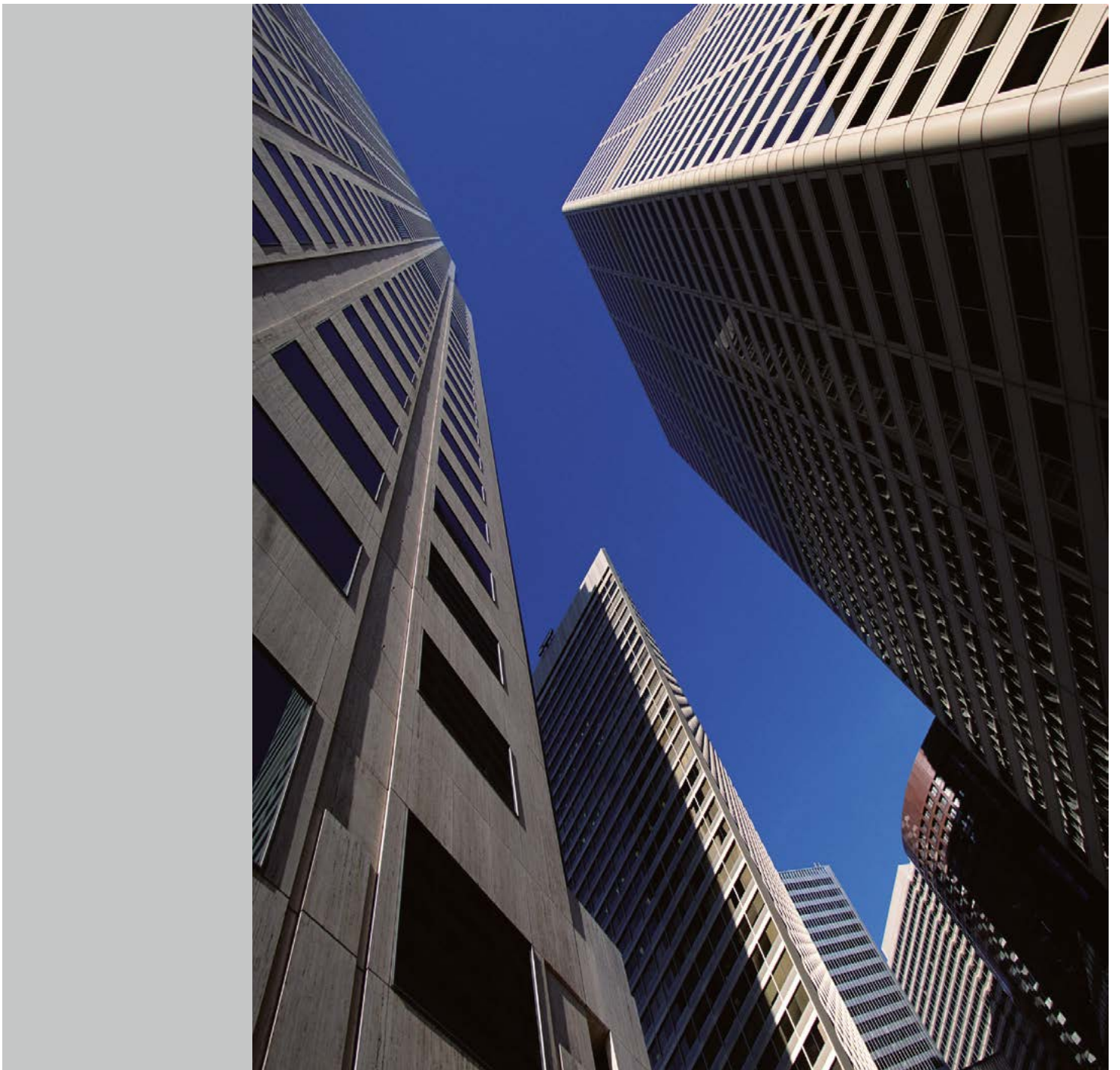
Finishes	Reference
Chrome finish	V555

Technical drawings



The first level of
Vachette's Security
cylinder

A standard 5-pin system that offers the Vachette
design and reliability.



Applications

A security system particularly adapted for the residential sectors

The FIRST SYSTEM is designed for individual or collective residential installations.
Only for differed key cylinders.



Technical datas



- 5-pin system.
- Dome headed plug with groove for easy key insertion.
- Key shoulder guidance for higher resistance to twisting.
- Nickel plated brass key.
- Supplied with 3 keys.
- Double cylinder 30x30 mm and 35x35 mm.
- Double cylinder with thumbturn 30x30 mm and 35x35 mm.
- Single cylinder 30x10 mm and 35x10 mm.

Special features

- Easy key insertion.
- Resistance to twisting.

Warranty
2 years



Europrofile double cylinder with thumb turn

Cylinder with thumbturn for installation on all door types. 3 keys. Dimension : 30 x 30 mm and 35 x 35 mm.

Finishes	Reference
Nickel plated	FIRST 3001
Brass finish	FIRST 3000



Europrofile privacy function double cylinders

Double cylinder with thumbturn. Privacy function. Dimension : 30 x 30 mm and 35 x 35 mm.

Finishes	Reference
Nickel plated	FIRST 3001 PC
Brass finish	FIRST 3000 PC



Europrofile double cylinder

Double cylinder. 3 keys. Dimension : 30 x 30 mm and 35 x 35 mm.

Finishes	Reference
Nickel plated	FIRST 7001
Brass finish	FIRST 7000



Single Europrofile cylinders

Single cylinder 3 keys. Dimension: 30 x 10 mm and 35 x 10 mm.

Finishes	Reference
Nickel plated	FIRST 5001
Brass finish	FIRST 5000

ASSA ABLOY is the global leader in door opening solutions, dedicated to satisfying end-user needs for security, safety and convenience

ASSA ABLOY

ASSA ABLOY

Services administratifs

Parc d'entreprises du Grand Troyes
Quartier Europe Centrale
10, avenue de l'Europe
10 300 Sainte-Savine - France

www.assaabloy.com