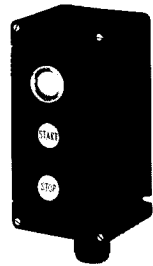
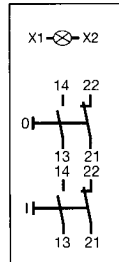


# Control Units P 411, P412 and P 412

## Ordering details



### Connection diagram



### Description of built-in components

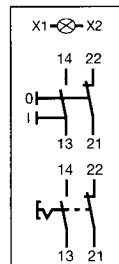
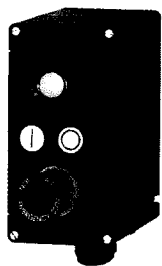
Triple control unit with:  
2 push-buttons, 1 NO 1 NC,  
incl. designation labels  
"O; I; START; STOP"  
1 signal lamp 240 V AC,  
white lens cover

### Weight

0.76 kg

### Order No.

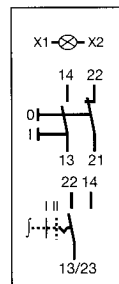
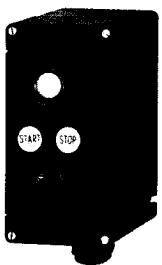
GHG 411 8351 R0223



Triple control unit with:  
1 double push-button,  
1 NO + 1 NC, incl. designation labels  
"O; I; START; STOP"  
1 mushroom-head push-button,  
1 NO + 1 NC, with manual  
release  
Inscription: "NOT-AUS" and  
"EMERGENCY STOP"  
1 signal lamp 240 V AC,  
amber lens cover

0.80 kg

GHG 411 8351 R0875



Triple control unit with:  
1 signal lamp 240 V AC,  
incl. green lens cover  
1 double push-button, 1 NO +  
1 NC, incl. designation labels  
"O; I; START; STOP"  
1 control switch,  
1 change-over, switch  
mechanism 8  
Inscription: "HAND - AUTO"

0.80 kg

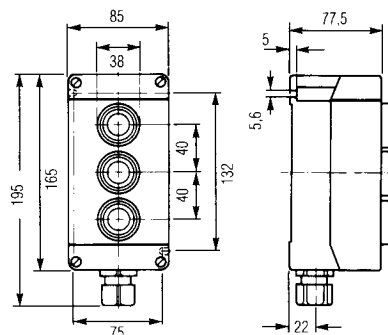
GHG 411 8351 R0876

## Accessories mounting plate

Type	Application	Order No.
Size 2	for wall mounting for channel mounting for pipe mounting	GHG 610 1953 R004 GHG 610 1953 R006 GHG 610 1953 R005
Label holder with designation label (blank) Qty. per pack = 50		GHG 610 1953 R0012

Size 2  
Design: Pipe fixing

Dimensions in mm



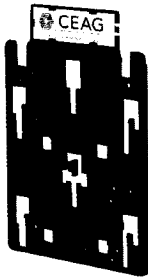
# Moulded Plastic Equipment Mounting Plates for Wall, Channel and Pipe Fixing

Size 1



Design: Wall fixing

Size 2



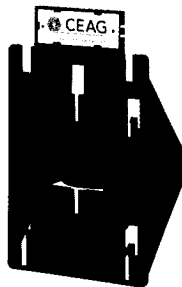
Design: Channel fixing

Size 1



Design: Pipe fixing

Size 2



Design: Pipe fixing

Size 3



Design: Pipe fixing

## Technical data

### Mounting plates for wall, channel and pipe fixing

Material	Moulded plastic, reinforced with glass fibre
External pipe diameter	from 40-43 mm / 47-50 mm / 59-62 mm
Diameter of trellis bars	5 mm

## Allocation

Equipment for Size 1	Junction box eAZK 96 2 Terminal box GHG 791 01
Equipment for Size 2	Junction box eAZK 96 2 Terminal box GHG 791 02 Control switch GHG 292 Safety switch 20 A, 3-pole
Equipment for Size 2A	Junction box GHG 721 0 and all apparatus suited for size 2
Equipment for Size 3	Terminal box GHG 721 1 <sup>1)</sup> Terminal box GHG 745 <sup>1)</sup> Control switch GHG 293 Safety switch 20 A, 6pole Safety switch 40 A, 3pole Circuit breaker and manual motor starter switch GHG 635

## Ordering details

Type	Application	Order No.
Size 1	for wall mounting	GHG 610 1953 R0001
	for channel mounting	GHG 610 1953 R0003
	for pipe mounting	GHG 610 1953 R0002
Size 2	for wall mounting	GHG 610 1953 R0004
	for channel mounting	GHG 610 1953 R0006
	for pipe mounting	GHG 610 1953 R0005
Size 2 A	for wall mounting	GHG 610 1953 R0007
	for channel mounting	GHG 610 1953 R0009
	for pipe mounting	GHG 610 1953 R0008
Size 3	for wall mounting <sup>2)</sup>	GHG 610 1953 R0018
	for channel mounting <sup>2)</sup>	GHG 610 1953 R0018
	for pipe mounting	GHG 610 1953 R0010

## Quantity

Mounting plates: Size 1 to 2A	10 Pcs.
Mounting plates: Size 3	5 Pcs.

## Accessories

Type	Order No.
Label holder with designation label (blank) Qty. per pack = 50	GHG 610 1953 R0012

<sup>1)</sup> available appr. 3. quarter 97 for wall- and channel fixing

<sup>2)</sup> available appr. 3. quarter 97