



SMALL COMPUTERS NETWORK



LOCAL AREA NETWORKS (LAN)



WORK-STATIONS



SERVERS



EPOS (Electronic Point of Sales) SYSTEM

# Dialog Vision

## 500-3000 VA single-phase

Dialog Vision 500-3000 VA



The **DIALOG VISION** series includes the DVT (Tower version), DVR (Rack version) and DVD (Dual Rack/Tower version) with models from 500VA to 3000VA and uses sinewave digital technology. The **DIALOG VISION** range, with its advanced communications and connectivity options, is the ideal solution for the most demanding of customers looking for superior protection and versatility.

**DIALOG VISION** is the best protection for network devices, rack mounted servers, conventional rack-mounted or tower servers, network storage systems.

1. Release the mimic panel by applying pressure to the catch



2. Rotate the mimic panel and fasten it back on again



3. Turn the UPS 90°



4. Slide the UPS into the rack cabinet



### VERY HIGH PROTECTION

The Automatic Voltage Regulation provides stabilisation from brownouts, sag and surge voltages. EMI filters then provide further protection from spikes and transients. When the mains power supply fails, the load is powered by the inverter and receives a true SINEWAVE supply for maximum power continuity and reliability. The UPS also incorporates protection for PC and network, telephone line/modem connections (RJ45-RJ11).

### HIGH AVAILABILITY

One PowerShare socket for load-shedding of the least critical loads to maximise back up time for the most critical servers. Hot swappable battery (front access) for simple and risk-free UPS maintenance. Additional Battery Boxes (with chargers) are available for the DVD 220 and 300 for long back up time applications. Battery Test facility to detect deteriorating battery performance and failure.

Deep discharge protection: in the case of low load long discharge periods, the end-of-discharge voltage threshold is increased as recommended by battery manufacturers, in order to avoid damaging the battery

### VERSATILITY

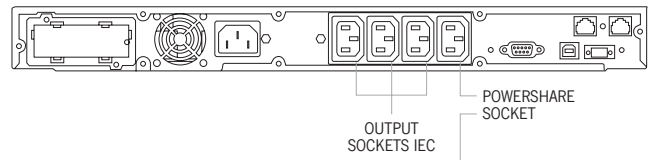
Dialog Vision Dual (DVD150, 220 and 300) can be placed directly onto the floor or mounted in 19" rack mount cabinets. The front panel digital display can be easily pulled out and rotated to suit the installation format. DVD and DVR versions include an Emergency Power Off (EPO) input contact. Cold start function to allow a Dialog Vision to power up with no mains power supply present.

### ADVANCED COMMUNICATION

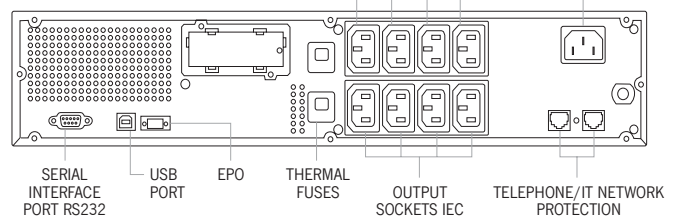
- Advanced, multi-platform communication for all operating systems and network environments: PowerShield<sup>3</sup> monitoring and shut-down software included, with SNMP agent, for Windows 9x, ME, NT 4.0, 2000, XP, Vista and 2003 server; Mac OS X, Linux, Novell and most popular Unix operating systems.
- USB or RS232 serial port (selectable)
- Slot-in SNMP network adapter card
- LCD Display

### 2 YEAR WARRANTY

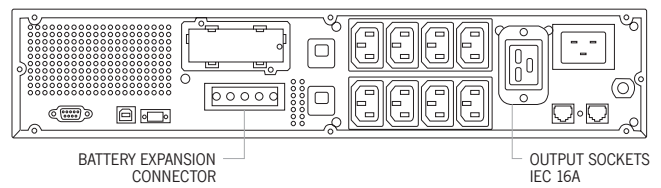
### DVR 50/80/110



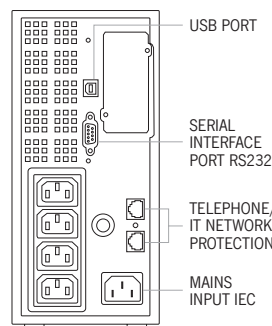
### DVD 150



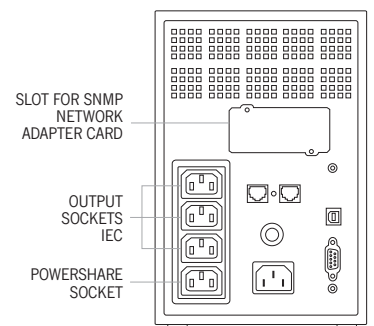
### DVD 220 / 300



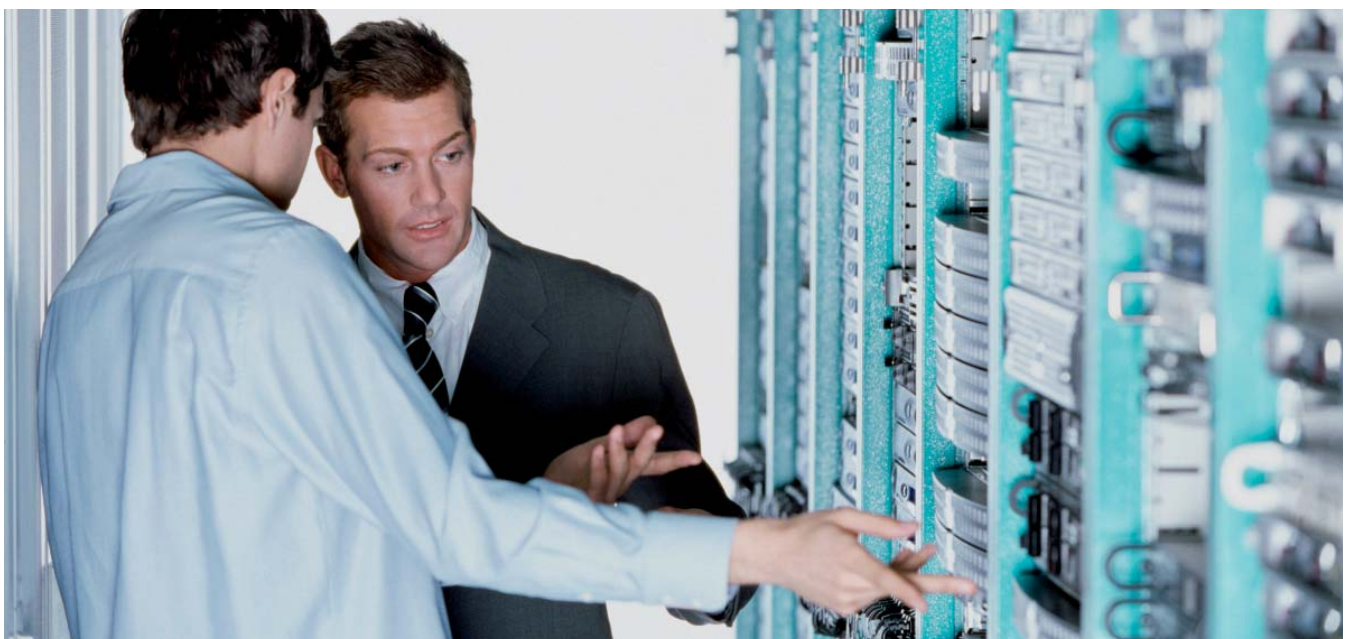
### DVT 50/80/110



### DVT 150/200



TECHNICAL DETAILS



TOWER VERSION MODELS	DVT 50	DVT 80	DVT 110	DVT 150	DVT 200
POWER	500VA/350W	800VA/540W	1100VA/740W	1500VA/1050W	2000VA/1350W
Dimensions (hwd) (mm)	235 x 110 x 383	235 x 110 x 383	235 x 110 x 383	235 x 160 x 425	235 x 160 x 425
Weight (kg)	7.2 Kg	10.6 Kg	11 Kg	18 Kg	18.4 Kg
IEC mains input plug	1 (10A)	1 (10A)	1 (10A)	1 (10A)	1 (10A)
IEC output sockets	4 (10A)	4 (10A)	4 (10A)	4 (10A)	4 (10A)

RACK 1U VERSION and TOWER/RACK (Dual) 2U VERSION MODELS	DVR 50	DVR 80	DVR 110	DVD 150	DVD 220	DVD 300
POWER	500VA/350W	800VA/540W	1100VA/740W	1500VA/1050W	2200VA/1540W	3000VA/2100W
Dimensions (hwd) (mm)	1U x 19" x 460	1U x 19" x 460	1U x 19" x 460	T 88 x 438 x 582 R 2U x 19" x 582	T 88 x 438 x 582 R 2U x 19" x 582	T 88 x 438 x 582 R 2U x 19" x 582
Weight (kg)	12 Kg	13.5 Kg	15.6 Kg	28.7 Kg	31 Kg	32.8 Kg
IEC mains input plug	1 (10A)	1 (10A)	1 (10A)	1 (10A)	1 (16A)	1 (16A)
IEC output sockets	4 (10A)	4 (10A)	4 (10A)	8 (10A)	8 (10A) - 1 (16A)	8 (10A) - 1 (16A)

INPUT	
Rated voltage	230 Vac (selectable 200, 208, 220, 240 V)
Voltage range	160 V - 294 V
Frequency	50/60 Hz auto sensing
Frequency range	±5%
OUTPUT	
Rated voltage	230 Vac (selectable 200, 208, 220, 240 V)
Frequency	50 or 60 Hz auto sensing
Waveform	True sinewave
BATTERIES	
Type	VRLA AGM Maintenance-free lead-acid
Recharge time	4-6 h
ENVIRONMENTAL	
Protection	Overload - short-circuit - overvoltage - undervoltage - temperature - low battery
Communication	USB / RS232 / slot for interface communication
Safety compliance	IEC / EN62040-1-1 and Directive EC 73/23. 93/68
EMC conformance	IEC / EN62040-2 and Directive EC 2004/108
Performance	IEC / EN62040-3
Operating temperature	0°C - 40°C
Storage temperature	-15°C - 45°C
Relative humidity	< 95% non condensing
Noise	< 50 dBA
Colour	Dark grey

B.B. MODELS	BB 96-A5
DVD MODEL	DVD 220 - DVD 300
Dimensions (mm) h x w x d	