



Figure similar

ENCLOSURE FOR COMMAND DEVICES, 22MM, ROUND, ENCLOSURE MATERIAL METAL, ENCLOSURE TOP PART YELLOW, 1 COMMAND POINT METAL, A=EM. STOP MUSHROOM PUSHB. RED, 40MM, ROTATE TO UNLATCH, COMMAND POINT AT CENTER, 1NC, SCREW TERMINAL, BASE MOUNTING, TOP AND BOTTOM 1 X M20 EACH

product brand name		SIRIUS ACT
Product designation		Commanding and signaling devices
Design of the product		Enclosure
<b>Manufacturer article number</b>		
<ul style="list-style-type: none"> <li>• of the supplied holder</li> <li>• of supplied empty enclosure</li> </ul>		<a href="#">3SU1550-0AA10-0AA0</a> <a href="#">3SU1851-0AA00-0AA2</a>

Enclosure:		
<b>Design of the housing</b>		Command point in center
<b>Shape of the enclosure front</b>		Square
<b>Material of the enclosure</b>		plastic
<b>Number of control points</b>		1
<b>Product component</b>		
<ul style="list-style-type: none"> <li>• EMERGENCY STOP device</li> <li>• protective collar</li> </ul>		No No
<b>Color</b>		
<ul style="list-style-type: none"> <li>• of top part of the enclosure</li> </ul>		yellow
<b>Delivery state</b>		
<ul style="list-style-type: none"> <li>• as a kit</li> <li>• pre-wired on strip terminal</li> </ul>		No No
<b>Mounting type of the enclosure</b>		Vertical

Actuator:		
<b>Design of the operating mechanism</b>		Emergency stop mushroom pushbutton
<b>Suitability for use EMERGENCY OFF switch</b>		No
<b>Product feature</b>		
<ul style="list-style-type: none"> <li>• lockout</li> </ul>		No

<b>Product expansion optional Light source</b>		No
<b>Color</b>		
• of the actuating element		Red
<b>Material of the actuating element</b>		plastic
<b>Shape of the actuating element</b>		round
<b>Number of contact modules</b>		1

<b>Front ring:</b>		
<b>Product component front ring</b>		Yes
<b>Design of the front ring</b>		Standard
<b>Material of the front ring</b>		Metal, high gloss
<b>Color of the front ring</b>		silver

<b>Holder:</b>		
<b>Material of the holder</b>		Metal

<b>Display:</b>		
<b>Number of LED modules</b>		0

<b>General technical data:</b>		
<b>Product function</b>		
• positive opening		Yes
• EMERGENCY OFF function		Yes
• EMERGENCY STOP function		Yes
<b>Vibration resistance</b>		
• acc. to IEC 60068-2-6		10 ... 500 Hz: 5g
<b>Equipment marking</b>		
• acc. to DIN EN 61346-2		S
• acc. to DIN EN 81346-2		S
<b>Design of the fuse link for short-circuit protection of the auxiliary switch with type of assignment 1 required</b>		gG / Dz 10 A, quick-acting / Dz 10 A
<b>Continuous current of the C characteristic MCB</b>	A	10
<b>Operating voltage</b>		
• with AC		
— at 50 Hz Rated value	V	5 ... 500
— at 60 Hz Rated value	V	5 ... 500
• for DC Rated value		
— maximum	V	500
— minimum	V	5

<b>Auxiliary circuit:</b>		
<b>Number of NC contacts</b>		
• for auxiliary contacts		0
<b>Number of NO contacts</b>		
• for auxiliary contacts		1

<b>Number of CO contacts</b>		0
<ul style="list-style-type: none"> <li>• for auxiliary contacts</li> </ul>		
<b>Design of the contact of the auxiliary contacts</b>		Silver alloy

#### Connections/ Terminals:

<b>Type of electrical connection</b>		Screw-type terminal
<ul style="list-style-type: none"> <li>• of modules and accessories</li> </ul>		
<b>Type of electrical connection on enclosure</b>		Cable routing above and below, both 1 x M20
<b>Tightening torque</b>		
<ul style="list-style-type: none"> <li>• with screw-type terminals</li> </ul>	N·m	0.8 ... 0.9

#### Interfaces:

<b>Design of the interface</b>		without
<ul style="list-style-type: none"> <li>• for communication</li> </ul>		

#### Ambient conditions:

<b>Ambient temperature</b>		
<ul style="list-style-type: none"> <li>• during operation</li> </ul>	°C	-25 ... +70
<ul style="list-style-type: none"> <li>• during storage</li> </ul>	°C	-40 ... +80

#### Installation/ mounting/ dimensions:

<b>Mounting type</b>		Floor mounting
<ul style="list-style-type: none"> <li>• of modules and accessories</li> </ul>		
<b>Height</b>	mm	85
<b>Width</b>	mm	85
<b>Depth</b>	mm	64
<b>Shape of the installation opening</b>		round

#### Accessories:

<b>Number of labels</b>		1
<b>Marking of the name plate for command devices</b>		A = I
<b>Color of the label</b>		A = black

#### Certificates/ approvals:

#### Further information

##### Information- and Downloadcenter (Catalogs, Brochures,...)

<http://www.siemens.com/industrial-controls/catalogs>

##### Industry Mall (Online ordering system)

<http://www.siemens.com/industrymall>

##### Cax online generator

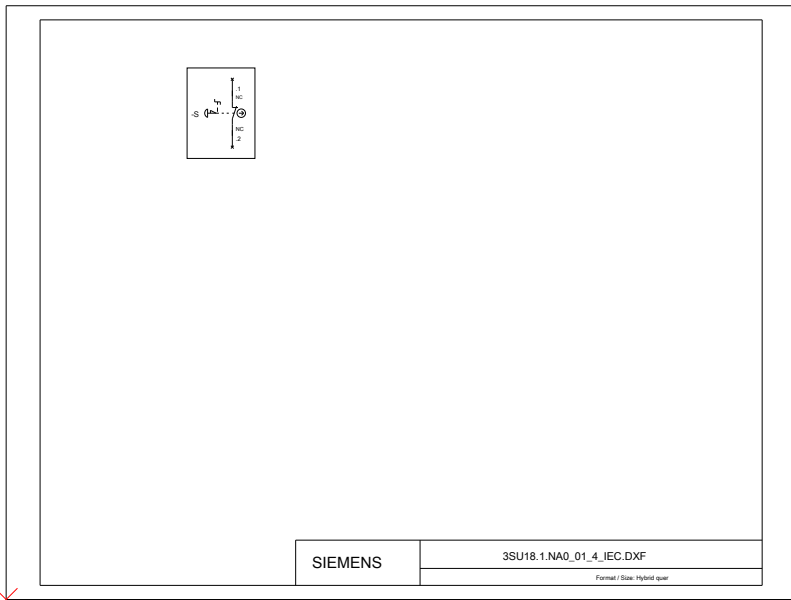
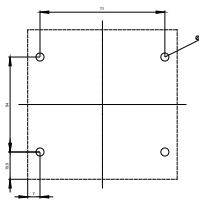
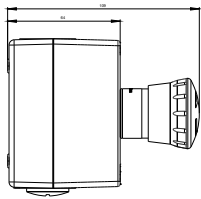
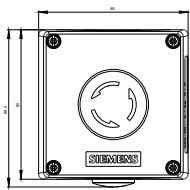
<http://support.automation.siemens.com/WW/CAXorder/default.aspx?lang=en&mlfb=3SU18510NA002AA2>

##### Service&Support (Manuals, Certificates, Characteristics, FAQs,...)

<http://support.automation.siemens.com/WW/view/en/3SU18510NA002AA2/all>

##### Image database (product images, 2D dimension drawings, 3D models, device circuit diagrams, EPLAN macros, ...)

[http://www.automation.siemens.com/bilddb/cax\\_de.aspx?mlfb=3SU18510NA002AA2&lang=en](http://www.automation.siemens.com/bilddb/cax_de.aspx?mlfb=3SU18510NA002AA2&lang=en)



last modified:

09.03.2015