



MASTERC colour CDM-TD Essential

MASTERC colour CDM-TD Essential 150W/830 RX7s

Range of double-ended, compact, efficient discharge lamps with stable color over lifetime and crisp, sparkling light

Product data

• General Characteristics

Cap-Base	RX7s
Bulb	T25 [T 25mm]
Bulb Finish	Clear
Operating Position	p45 [Parallel +/-45D or Horizontal(HOR)]
Life to 5% failures	6000 hr
Life to 10% failures	8000 hr
Life to 20% failures	10000 hr
Life to 50% failures	12000 hr

• Light Technical Characteristics

Color Code	830 [CCT of 3000K]
Color Rendering Index	80 Ra8
Color Designation (text)	Warm White
Color Temperature	3000 K
Color Temperature Technical	2985 K
Luminous Flux Lamp EM	13000 Lm
Lumen Maintenance 2000h	85 %
Lumen Maintenance 5000h	80 %
Lumen Maintenance 10000h	70 %
Chromaticity Coordinate X	0.437 -
Chromaticity Coordinate Y	0.399 -

• Electrical Characteristics

System Power EM	165 W
-----------------	-------

System Power EL	170 W
Lamp Wattage	150 W
Lamp Wattage EM 25°C, Nominal	150.0 W
Lamp Wattage EM 25°C, Rated	147.0 W
Lamp Voltage	96 V
Lamp Current EM	1.8 A
Ignition Time	30 (max) s
Run-up time 90%	3 (max) min
Re-ignition Time [min]	15 (max) min
Dimmable	No

• Environmental Characteristics

Energy Efficiency Label (EEL)	A+
Mercury (Hg) Content	10.23 mg
Energy consumption kWh/1000h	161 kWh

• UV-related Characteristics

PET (NIOSH)	333 h.klx
Damage Factor D/fc	0.14 -

• Luminaire Design Requirements

Pinch Temperature	300 (max) C
Bulb Temperature	650 (max) C

• Product Dimensions

Overall Length C	137.43 (max) mm
Diameter D	25 (max) mm

PHILIPS

MASTERCoulour CDM-TD Essential

Arc Length O 10 mm
 Overall Length C 5.4375 (max) in
 [inch]
 Diameter D [inch] 0.875 in

Pieces per pack 1
 Packing configuration 12
 Packs per outerbox 12
 Bar code on pack - EAN1 8718291211570
 Bar code on outerbox - EAN3 8718291211587
 Logistic code(s) - 12NC 928063805130
 ILCOS code MD/UB-150/830-H-RX7s-25/135.4
 Net weight per piece 26.700 gr

Product Data

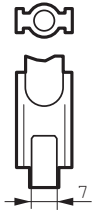
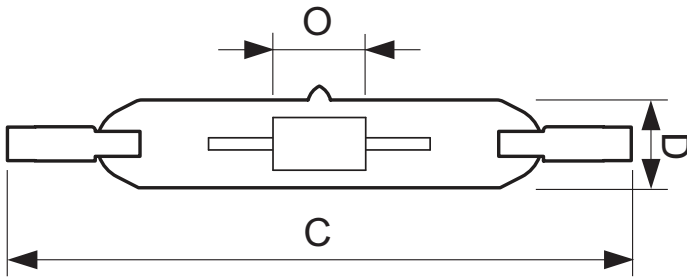
Order code 928063805130
 Full product code 928063805130
 Full product name MASTERCoulour CDM-TD Essential
 150W/830 RX7s
 Order product name MASTERC CDM-TD Essential
 150W/830 RX7s

Warnings and Safety

- Use only in a totally enclosed luminaire, even during testing (IEC61167, IEC 62035, IEC60598)
- The luminaire must be able to contain hot lamp parts if the lamp ruptures

- Lamps may use electronic or electromagnetic control gear
- Control gear must include end-of-life protection (IEC61167, IEC 62035)

Dimensional drawing

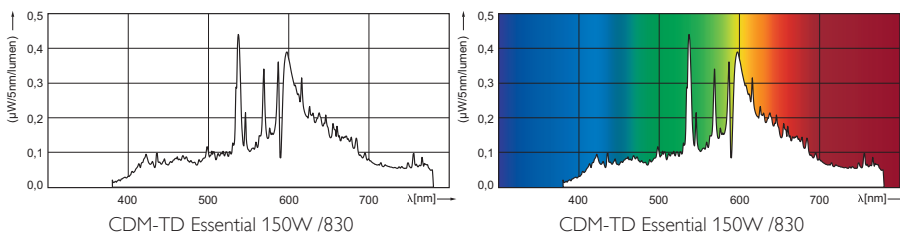


RX7s

MASTERCoulour CDM-TD Essential 150W/830 RX7s

Product	C (Max)	D (Max)	O (Min)	O (Norm)	O (Max)
CDM-TD Essential 150W/830 RX7s	137.43	25	-	10	-

Photometric data





© 2014 Koninklijke Philips N.V. (Royal Philips)
All rights reserved.

Specifications are subject to change without notice. Trademarks are the property of Koninklijke Philips N.V. (Royal Philips) or their respective owners.

www.philips.com/lighting

2014, July 15
data subject to change