

Datasheet

RS Pro Stainless Steel Concealed Fixings Handle, 104mm x 30mm x 9mm 95mm

RS Stock No: **237-895**



Product Details

RS Pro drawer handle measures 104 x 30 x 9 mm. This handle is made of stainless steel. The fixing centres are 95 mm apart. It is suitable for harsh environments.

Features and Benefits

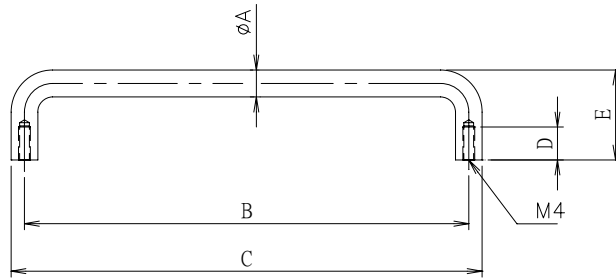
- High-grade 304 stainless steel construction
- Reverse panel fixing
- Suitable for harsh environments



ENGLISH

Specifications:

Concealed Fixings	Yes
Material	Stainless Steel
Fixing Centres	95 mm
Height	30 mm
Length	104 mm
Width	9 mm



STOCK NO.	Dia mm (A)	C.C mm (B)	Length mm (C)	D mm	Height mm (E)	Weightt (g)	Material
237-889	8	52	60	8	34	14	Aluminum
237-873	8	80	88	8	34	24	Aluminum
237-867	8	100	108	8	34	27	Aluminum
237-851	8	120	128	8	34	30	Aluminum
237-845	9	150	159	9	30	100	SS304
237-902	9	120	129	9	30	83	SS304
237-895	9	95	104	9	30	72	SS304