

## Photovoltaic connector - PV-FT-CM-C-6-130-RD - 1805180

Please be informed that the data shown in this PDF Document is generated from our Online Catalog. Please find the complete data in the user's documentation. Our General Terms of Use for Downloads are valid (<http://phoenixcontact.com/download>)



Photovoltaic connector, Nominal current: 40 A, Nom. voltage: 1500 V, Connection type: Crimp, Color: black, Can only be released using a tool



### Key Commercial Data

Packing unit	1 pc
Weight per Piece (excluding packing)	16.8 g
Custom tariff number	85359000
Country of origin	Germany

### Technical data

#### Dimensions

Fixed cable length	130 mm
External cable diameter	5.4 mm $\pm$ 0.15 mm

#### Ambient conditions

Degree of protection (when plugged in)	IP66 / IP68 (2 m / 24 h)
Degree of protection (not plugged in)	IP65
Ambient temperature (operation)	-40 °C ... 85 °C
Ambient temperature (assembly)	-25 °C ... 50 °C

#### General

Design	Male connector
Tightening torque nut	1.8 Nm $\pm$ 0.1 Nm
Insertion force	45 N $\pm$ 10 N
Disconnect force	250 N $\pm$ 50 N
Pull-out force of cable $\geq$ disconnect force	> 80 N
Rated voltage	1500 V
Rated current (6.0 mm <sup>2</sup> )	40 A

# Photovoltaic connector - PV-FT-CM-C-6-130-RD - 1805180

## Technical data

### General

Nominal cross section	6 mm <sup>2</sup>
Protection class	II

### Material

Color	black
Insulating material	mPPE
Contact material	Cu
Contact surface material	Ag
Flammability rating according to UL 94	V0

### Connection data

Connection method	Crimp
Connection capacity	6 mm <sup>2</sup>
Contact resistance with connected conductor	0.45 mΩ
Cable type	S03

### Conductor

Outer sheath, material	PE-X
External sheath, color	red
Smallest bending radius, fixed installation	27 mm
Smallest bending radius, movable installation	54 mm

### Standards and Regulations

Flammability rating according to UL 94	V0
--	----

## Classifications

### eCl@ss

eCl@ss 4.0	272607xx
eCl@ss 4.1	27260701
eCl@ss 5.0	27260701
eCl@ss 5.1	27141190
eCl@ss 6.0	27260704
eCl@ss 7.0	27440402
eCl@ss 8.0	27440102
eCl@ss 9.0	27440107

### ETIM

ETIM 3.0	EC001121
ETIM 4.0	EC001753

# Photovoltaic connector - PV-FT-CM-C-6-130-RD - 1805180

## Classifications

### ETIM

ETIM 5.0	EC002635
----------	----------

### UNSPSC

UNSPSC 6.01	30211810
UNSPSC 7.0901	39121409
UNSPSC 11	39121409
UNSPSC 12.01	39121409
UNSPSC 13.2	39121409

## Approvals

### Approvals

---

#### Approvals

VDE Zeichengenehmigung / EAC

---


#### Ex Approvals

---

#### Approvals submitted

---

## Approval details

VDE Zeichengenehmigung 	
mm <sup>2</sup> /AWG/kcmil	6.0
Nominal current I <sub>N</sub>	40 A
Nominal voltage U <sub>N</sub>	1500 V

EAC
-----

## Accessories

### Accessories

Flat nut

# Photovoltaic connector - PV-FT-CM-C-6-130-RD - 1805180

## Accessories

Nut - PV-FT-C NUT BK - 1775880



Nut for securing SUNCLIX panel feed-throughs to housing. NB: This nut must always be ordered separately.

---

## Protective cap

Protective cap - PV-C PROTECTION CAP - 1785430

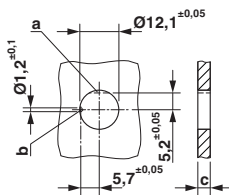
Protective cap for SUNCLIX photovoltaic connector; transport protection for the mating face.



---

## Drawings

Dimensional drawing

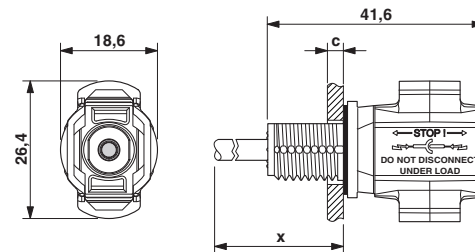


a: anti-rotation protection

b: coding

c: panel thickness - plastic: 2 - 6 mm; metal: 2 - 5 mm

Dimensional drawing



Dimension x = cable length

c: panel thickness - plastic: 2 - 6 mm; metal: 2 - 5 mm