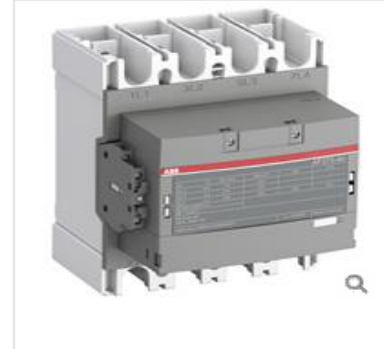


AF305-40-11-13

Print View..
Print to Pdf..

General Information

Extended Product Type:	AF305-40-11-13
Product ID:	1SFL587102R1311
EAN:	7320500505007
Catalog Description:	AF305-40-11-13 Contactor



Categories

Products » Low Voltage Products and Systems » Control Products »
Contactors » Block Contactors

Ordering

EAN:	7320500505007
Minimum Order Quantity:	1 piece
Customs Tariff Number:	85364900

Dimensions

Product Net Width:	184,4 mm
Product Net Depth:	180 mm
Product Net Height:	225,4 mm
Product Net Weight:	5.55 kg

Container Information

Package Level 1 Units:	1 piece
Package Level 1 Gross Weight:	6.38 kg

Environmental

Ambient Air Temperature:	Close to Contactor Fitted with Thermal O/L Relay (0.85 - 1.1 Uc) -25...+50 °C Close to Contactor without Thermal O/L Relay (0.85 - 1.1 Uc) -40...+70 °C Close to Contactor for Storage -40...+70 °C
Maximum Operating Altitude Permissible:	3000 m

Technical

Rated Operational Power AC-3 (P_g):	(220 / 230 / 240V) 90 kW (380 / 400V) 160 kW (415V) 160 kW (440V) 160 kW
Rated Operational Current AC-1 (I_g):	(690V) 40°C 500 A (690V) 60°C 400 A (690V) 70°C 325 A (1000V) 40°C 375 A (1000V) 60°C 325 A (1000V) 70°C 260 A
Number of Main Contacts NO:	4
Number of Main Contacts NC:	0
Number of Auxiliary Contacts NO:	1
Number of Auxiliary Contacts NC:	1
Rated Control Circuit Voltage (U_c):	50 Hz 100...250 V 60 Hz 100...250 V DC Operation 100...250 V
Coil Consumption:	Pull-in at Max Rated Control Circuit Voltage 50Hz 385 V-A Pull-in at Max Rated Control Circuit Voltage 60Hz 385 V-A Holding at Max Rated Control Circuit Voltage 60Hz 17.5 V-A Holding at Max Rated Control Circuit Voltage 50Hz 17.5 V-A Holding at Max Rated Control Circuit Voltage DC 4.5 W Pull-in at Max Rated Control Circuit Voltage DC 410 W

Technical UL/CSA

Maximum Operating Voltage UL/CSA:	Main Circuit 600 V
-----------------------------------	--------------------