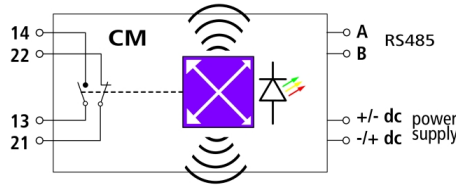


DRC MCM XT (910 695)

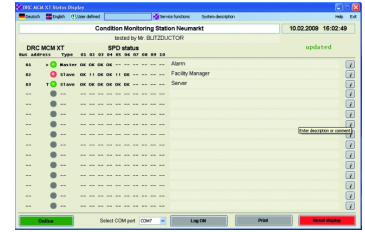
Condition monitoring of LifeCheck-equipped SPDs
 Permanent monitoring of up to 10 SPDs (40 signal lines)
 Minimum wiring effort
 Optional remote signalling via RS485 or remote signalling contacts



Figure without obligation



Basic circuit diagram DRC MCM XT



DRC MCM XT status display software

DIN rail mounted device with integrated LifeCheck sensor for condition monitoring of max. ten LifeCheck-equipped BLITZDUCTOR XT/XTU arresters. Visual operating state indication via three-coloured LED combined with remote signalling function (break or make contact). The free "Status Display and Service Console" software can be optionally used via an RS485 interface converter. With the software a remote condition monitoring of all arresters is possible by PC. Download: www.dehn.de/download

Type	DRC MCM XT
Part No.	910 695
For testing	up to 10 BLITZDUCTOR XT/XTU ML arresters
	up to 10 BLITZDUCTOR XT/XTU ML EX arresters; for use in non-hazardous atmospheres only! Observe thread measure!
Operating elements	multiway button, DIP switch
Indicator	three-coloured LED (green, orange, red)
Input d.c. voltage range (U_{IN})	18...48 V
Max. nominal current input (I_{IN})	100 mA
RFID transmission frequency	125 kHz
Message: Replacing of SPD recommended	LED, remote signalling contact (break and make contact)
Test cycle	continuous
Operating temperature range for monitoring 10 BXT/BXTU arresters	-20°C...+60°C
Operating temperature range for monitoring 8 BXT/BXTU arresters	-40°C...+80°C
Degree of protection	IP 20
For mounting on	35 mm DIN rails acc. to EN 60715
Connection type	screw
Cross-sectional area, solid / flexible	0.08 - 2.5 mm ²
Tightening torque (terminal)	0.4 Nm
Enclosure material	polyamide PA 6.6
Colour	grey
Test standards	EN 61010-1, 61000-6-2/4, ETSI EN 300 330-1 V1.7.1
Type of remote signalling contact	make (no) and break contact (nc)
Technical data of remote signalling contact	contact resistance < 25 ohms; leakage current < 1 µA
d.c. switching capacity	350 V/0.12 A
a.c. switching capacity	250 V/0.07 A
Delivery includes	base part, monitoring module, quick guide and labelling system
Weight	180 g
Customs tariff number	85389091
GTIN	4013364118959
PU	1 pc(s)

We reserve the right to introduce changes in performance, configuration and technology, dimensions, weights and materials in the course of technical progress. The figures are shown without obligation.