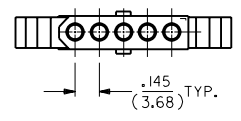
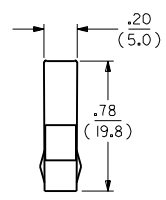
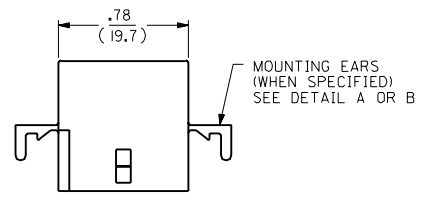
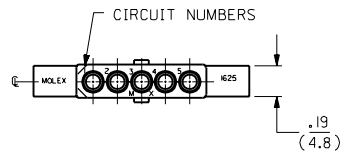
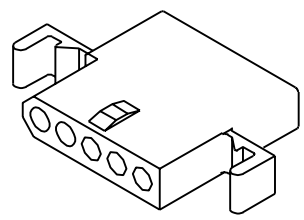


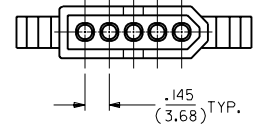
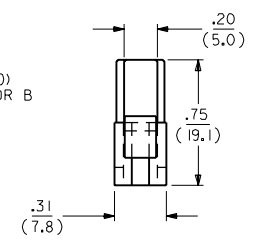
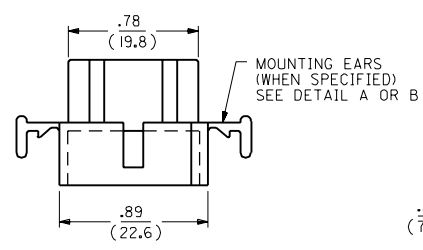
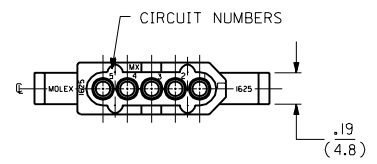
RECEPTACLE



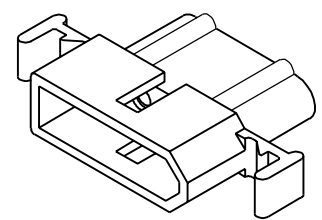
RECEPTACLE HOUSING
SHOWN WITH STANDARD EARS



PLUG



PLUG HOUSING
SHOWN WITH STANDARD EARS



F	2	F	F	REVISED & REDRAWN
F	1	F	F	EGR * US 1981
MFG.	SH.	REV.	LTR.	KBW 01-26-89 RW
				REVISIONS

DIMENSIONS SHOWN METRIC (INCH)		TITLE	
UNLESS OTHERWISE SPECIFIED TOLERANCES: ANGULAR ± .040°		.062/(1.57) HOUSINGS PLUG & RECEPTACLE 5 CIRCUIT ± .145/(3.68)C	
3 PLACE ± .010	---	MOLEX INCORPORATED LITTLE ROCK, AR 60532 U.S.A.	SHEET NO. DATE
2 PLACE ± .014	± 0.25		1 OF 2 01/26/89
1 PLACE ---	± 0.35		
DRAFT WHERE APPLICABLE MUST REMAIN WITHIN DIMENSIONS		PART NO. DRWG. NO.	
SEE CHART		SD-1625-5	
DRWG. BY: KBW	CHKD. BY: RW	FILE NAME: SD1625SX1	DIV. SIZE: CP C
APP'D. BY: RAS	SCALE: 2:	THIS DRAWING CONTAINS INFORMATION THAT IS PROPRIETARY TO MOLEX INC. AND SHOULD NOT BE USED WITHOUT WRITTEN PERMISSION.	

13 12 11 10 9 8 7 6 5 4 3 2 1

PLUG		RECEPTACLE	
PART NO.	ENG. NO.	PART NO.	ENG. NO.
03-06-2054	I625-5P	03-06-1055	I625-5R
03-06-2055	I625-5P1	03-06-1056	I625-5R1
03-06-7054	I625-5PBK	03-06-6055	I625-5RBK
03-06-7055	I625-5P1BK	NOT TOOLED	I625-5R2

LEGEND:

I625-5****

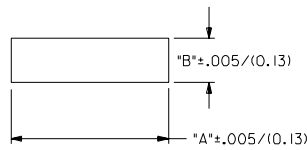
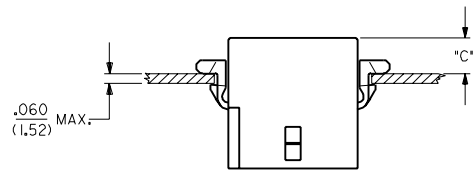
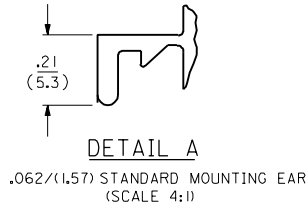
CIRCUIT SIZE

P = PLUG
R = RECEPTACLE

BLANK = WITH STANDARD EARS
1 = WITHOUT EARS
2 = WITH PREBENT EARS

COLOR:

BLANK = NATURAL COLOR
AM = AMBER BK = BLACK BU = BLUE
BN = BROWN GY = GRAY GN = GREEN
OR = ORANGE RD = RED YW = YELLOW

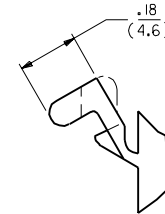
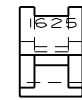


RECOMMENDED PANEL OPENING

HOUSING	DIM. "A"	DIM. "B"	"C" PREBENT EAR	"C" STANDARD EAR
PLUG	1.044/(26.52)	.318/(8.08)	.19/(4.8)	.18/(4.6)
RECEPT.	.940/(23.88)	.265/(6.73)	.21/(5.3)	.20/(5.1)

NOTES:

1. MOLEX PRODUCT SPEC 02-06 APPLIES.
2. ACCEPTS MOLEX .062 SERIES TERMINALS.
3. MATERIAL: NYLON TYPE 6/6, 94V-2.

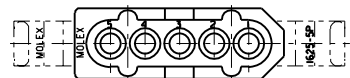


DIMENSIONS SHOWN (METRIC) INCH		UNLESS OTHERWISE SPECIFIED TOLERANCES ANGULAR ± .004		REVISIONS		DRAWING NO.		DATE	
3 PLACE	± .010	---	---	SEE SHEET 1		DRAWN BY: KBW		DATE: 01/26/89	
2 PLACE	± .01	± 0.25	---	LTR. REVISIONS		CHK'D BY: RW		SHEET NO. 2	
1 PLACE	---	± 0.35	---	LTR. REVISIONS		SCALE: 2:1		PART NO. SD-1625-5	
DRAFT WHERE APPLICABLE MUST REMAIN WITHIN DIMENSIONS				APP'D BY: RAS		FILE NAME: SD1625X2 DCR		DRAWING NO. 60532	
						TITLE: .062/(1.57) HOUSINGS PLUG & RECEPTACLE 5 CIRCUIT .145/(3.68)		MATERIAL: NYLON TYPE 6/6, 94V-2	
						MOLEX INCORPORATED U.S.A.		CP C	

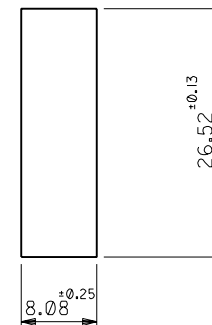
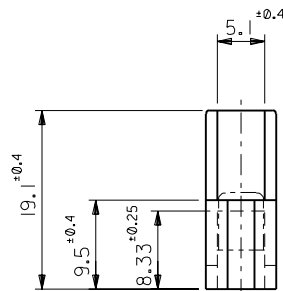
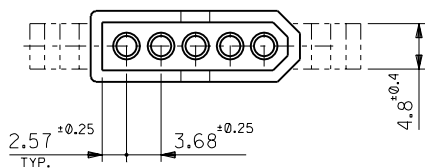
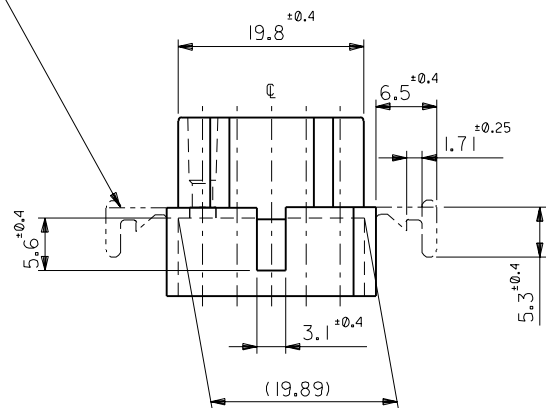
13 12 11 10 9 8 7 6 5 4 3 2 1

DWG. NO. SD-1625-5P*

ALL DIMENSIONS IN METRIC DO NOT SCALE DRAWING



パネル取付耳 (表参照)
MTG. EARS (SEE CHART)



パネル取付穴寸法 (厚さ 1.52 最大)
PANEL HOLE DIMENSION (THK. 1.52 MAX.)

注記
NOTE

1. 材質: ZYTEL 101. (ナイロン66, 94V-2)
MATERIAL: ZYTEL 101. (NYLON66, 94V-2)
2. () 内寸法は参考
() DIMENSIONS ARE REFERENCE

I625-5P1	無 WITHOUT
I625-5P	有 WITH
ENG. NO.	MTG. EARS

角度 ANGLE	±3°
30° 以上 OVER	+0.3
10° 以上 30° 未満 UNDER	+0.25
10° 未満 UNDER	+0.2
一般公差 GENERAL TOLERANCES	A

再作図 REDRAWN	再作日 DATE	再作理由 REASON	再作者 REVISOR
変更内容 REVISION RECORD	変更日 DATE	変更者 REVISOR	承認者 APPROVED

材料 MATERIAL	図中参照 REFER TO DRAWING
仕上げ FINISH	—
適用電線範囲 WIRE RANGE	—
被覆外径 INS. RANGE	—
DRAWN BY '96/07/09	CHK'D BY '96/07/09
H.IIJIMA	M.FUKUSHIMA
APP'D BY '96/07/09	尺 度 SCALE 2 : 1
M.ENOMOTO	

MOLEX-JAPAN CO., LTD. 日本モレックス株式会社	
REVISE ONLY ON CAD SYSTEM	
TITLE 名称	
.062 DIA. 5 CIRCUIT PLUG HOUSING	
DWG. NO.	REV
SD-1625-5P*	A

THIS DRAWING CONTAINS INFORMATION THAT IS PROPRIETARY TO MOLEX (JAPAN) AND SHOULD NOT BE USED WITHOUT WRITTEN PERMISSION
本図面は日本モレックス(株)の所有する情報を含むもので 当社の許可なく複製を禁止する。 EN-01C(032)MXJ-32