

Panel feed-through terminal block - UW 16 - 3073348

Please be informed that the data shown in this PDF Document is generated from our Online Catalog. Please find the complete data in the user's documentation. Our General Terms of Use for Downloads are valid (<http://download.phoenixcontact.com>)




Panel feed-through terminal block, Connection method: Screw connection, Load current : 101 A, Cross section: 6 mm² - 25 mm², AWG 10 - 6, Connection direction of the conductor to plug-in direction: 0 °, Width: 12.1 mm, Color: gray

Why buy this product

- Easy grouping with engagement pin versions
- Both terminal halves can be easily assembled by simply snapping them together
- Touch-proof insulating housing in a new design
- Molded versions ensure maximum tightness of seal
- Spacer plates increase air and creepage distances
- Automatic compensation of the panel thickness via the snap principle integrated in the insulation housing
- Universal screw connection with screw locking



Key commercial data

| | |
|--------------------------------------|---|
| Packing unit | 50 pc |
| GTIN |  4 046356 344593 |
| Weight per Piece (excluding packing) | 36.99 g |
| Custom tariff number | 85369010 |
| Country of origin | China |

Technical data

General

| | |
|---|---|
| Number of levels | 1 |
| Number of connections | 2 |
| Color | gray |
| Insulating material | PA |
| Inflammability class according to UL 94 | V0 |
| Maximum load current | 101 A (with 25 mm ² conductor cross section) |
| Rated surge voltage | 6 kV |
| Pollution degree | 3 |
| Surge voltage category | III |

Panel feed-through terminal block - UW 16 - 3073348

Technical data

General

| | |
|----------------------------------|---------------------------|
| Insulating material group | I |
| Connection in acc. with standard | IEC 60947-7-1 |
| Nominal current I_N | 76 A |
| Nominal voltage U_N | 800 V (with spacer plate) |
| Open side panel | nein |
| Number of positions | 1 |

Dimensions

| | |
|-------|---------|
| Width | 12.1 mm |
|-------|---------|

Connection data

| | |
|---|--|
| Note | Terminal sleeve |
| Connection side | Level 1 ext. 1 |
| Connection method | Screw connection |
| Note | Note: Product releases, connection cross sections and notes on connecting aluminum cables can be found in the download area. |
| Conductor cross section solid min. | 6 mm ² |
| Conductor cross section solid max. | 25 mm ² |
| Conductor cross section stranded min. | 6 mm ² |
| Conductor cross section stranded max. | 16 mm ² |
| Conductor cross section AWG/kcmil min. | 10 |
| Conductor cross section AWG/kcmil max | 4 |
| Conductor cross section stranded, with ferrule without plastic sleeve min. | 6 mm ² |
| Conductor cross section stranded, with ferrule without plastic sleeve max. | 16 mm ² |
| Conductor cross section stranded, with ferrule with plastic sleeve min. | 6 mm ² |
| Conductor cross section stranded, with ferrule with plastic sleeve max. | 16 mm ² |
| 2 conductors with same cross section, solid min. | 2.5 mm ² |
| 2 conductors with same cross section, solid max. | 10 mm ² |
| 2 conductors with same cross section, stranded min. | 2.5 mm ² |
| 2 conductors with same cross section, stranded max. | 6 mm ² |
| 2 conductors with same cross section, stranded, ferrules without plastic sleeve, min. | 4 mm ² |
| 2 conductors with same cross section, stranded, ferrules without plastic sleeve, max. | 6 mm ² |
| 2 conductors with same cross section, stranded, TWIN ferrules with plastic sleeve, min. | 4 mm ² |
| 2 conductors with same cross section, stranded, TWIN ferrules with plastic sleeve, max. | 6 mm ² |
| Stripping length | 16 mm |
| Internal cylindrical gage | B 7 |
| Screw thread | M5 |
| Tightening torque, min | 2 Nm |

Panel feed-through terminal block - UW 16 - 3073348

Technical data

Connection data

| | |
|-----------------------|--------|
| Tightening torque max | 2.3 Nm |
|-----------------------|--------|

Classifications

eCl@ss

| | |
|------------|----------|
| eCl@ss 4.0 | 27141131 |
| eCl@ss 4.1 | 27141131 |
| eCl@ss 5.0 | 27141134 |
| eCl@ss 5.1 | 27141134 |
| eCl@ss 6.0 | 27141134 |
| eCl@ss 7.0 | 27141134 |
| eCl@ss 8.0 | 27141134 |

ETIM

| | |
|----------|----------|
| ETIM 2.0 | EC001283 |
| ETIM 3.0 | EC001283 |
| ETIM 4.0 | EC001283 |
| ETIM 5.0 | EC001283 |

UNSPSC

| | |
|---------------|----------|
| UNSPSC 6.01 | 30211811 |
| UNSPSC 7.0901 | 39121410 |
| UNSPSC 11 | 39121410 |
| UNSPSC 12.01 | 39121410 |
| UNSPSC 13.2 | 39121410 |

Approvals

Approvals

Approvals

UL Recognized / GOST

Ex Approvals

Approvals submitted

Approval details

Panel feed-through terminal block - UW 16 - 3073348

Approvals

| | | |
|--------------------------------|-------|-------|
| UL Recognized | | |
| | B | C |
| mm ² /AWG/kcmil | 10-4 | 10-4 |
| Nominal current I _N | 85 A | 85 A |
| Nominal voltage U _N | 600 V | 600 V |

| | | |
|------|--|--|
| GOST | | |
|------|--|--|

Accessories

Accessories

Flange

Flange cover - UW 16-F - 3074538



Flange cover, Color: gray

Partition plate

Spacer plate - DP-UW 16 - 3074392



Spacer plate, Color: gray

Screwdriver tools

Screwdriver - SZS 1,0X4,0 VDE - 1205066



Screwdriver, slot-headed, VDE insulated, size: 1.0 x 4.0 x 100 mm, 2-component grip, with non-slip grip

Terminal marking

Panel feed-through terminal block - UW 16 - 3073348

Accessories

Marker for terminal blocks - UC-TM 12 - 0819194



Marker for terminal blocks, Sheet, white, Unlabeled, Can be labeled with: BLUEMARK CLED, BLUEMARK LED, Plotter, Mounting type: Snap into tall marker groove, For terminal block width: 12 mm, Lettering field: 11.45 x 10.5 mm

Marker for terminal blocks - UC-TMF 12 - 0819233



Marker for terminal blocks, Sheet, white, Unlabeled, Can be labeled with: BLUEMARK CLED, BLUEMARK LED, Plotter, Mounting type: Snap into flat marker groove, For terminal block width: 12 mm, Lettering field: 11.45 x 5.1 mm

Zack marker strip - ZB 12:UNPRINTED - 0812120



Zack marker strip, Strip, white, Unlabeled, Can be labeled with: Plotter, Mounting type: Snap into tall marker groove, For terminal block width: 12.2 mm, Lettering field: 12 x 10.5 mm

Zack Marker strip, flat - ZBF 12:UNBEDRUCKT - 0809735



Zack Marker strip, flat, Strip, white, Unlabeled, Can be labeled with: Plotter, Mounting type: Snap into flat marker groove, For terminal block width: 12 mm, Lettering field: 5.15 x 12.15 mm

Marker for terminal blocks - TMT 100 R - 0816605



Marker for terminal blocks, Roll, white, Unlabeled, Can be labeled with: THERMOMARK ROLL, THERMOMARK X, THERMOMARK S1.1, Unperforated, Mounting type: Snap into universal marker groove, Snap into flat marker groove, Lettering field: 6.35 x 101.5 mm

Panel feed-through terminal block - UW 16 - 3073348

Accessories

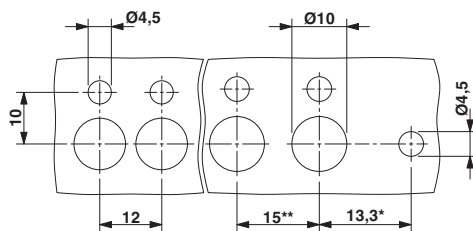
Marker for terminal blocks - TMT (EX9,5)R - 0828295



Marker for terminal blocks, Roll, white, Unlabeled, Can be labeled with: THERMOMARK ROLL, THERMOMARK ROLL X1, THERMOMARK X1.2, Mounting type: Snap into universal marker groove, Snap into tall marker groove, Lettering field: 9.5 x 50000 mm

Drawings

Dimensioned drawing



Dimensioned drawing

