

# Ball Valves in PVC-U

## PVC-U 2-Way Ball Valves, Type 346



### Model:

- Union ends for easy installation and removal
- Pneumatic or electric actuator available separately
- Range of size: DN 10–50  
 $\frac{3}{8}''$ – $2''$   
d 16–63

### Types available

d	DN		PN	k <sub>v</sub> value l/min Δp=1bar	Seal material EPDM		FPM			
	mm	in.			Code	£	Code	£		
<b>With solvent cement sockets BS Inch</b>		$\frac{3}{8}$	16	71	161.346.201			161.346.211		
		$\frac{1}{2}$	16	185	161.346.202			161.346.212		
		$\frac{3}{4}$	16	350	161.346.203			161.346.213		
		1	16	700	161.346.204			161.346.214		
		1 $\frac{1}{4}$	16	1000	161.346.205			161.346.215		
		1 $\frac{1}{2}$	16	1600	161.346.206			161.346.216		
		2	16	3100	161.346.207			161.346.217		
	<b>With threaded sockets ISO with BSP parallel female thread (Rp)</b>		$\frac{3}{8}$	10	71	161.346.021			161.346.031	
			$\frac{1}{2}$	10	185	161.346.022			161.346.032	
			$\frac{3}{4}$	10	350	161.346.023			161.346.033	
		1	10	700	161.346.024			161.346.034		
		1 $\frac{1}{4}$	10	1000	161.346.025			161.346.035		
		1 $\frac{1}{2}$	10	1600	161.346.026			161.346.036		
		2	10	3100	161.346.027			161.346.037		
<b>With solvent cement sockets ISO/DIN Metric</b>	16	10	16	71	161.346.001			161.346.011		
	20	15	16	185	161.346.002			161.346.012		
	25	20	16	350	161.346.003			161.346.013		
	32	25	16	700	161.346.004			161.346.014		
	40	32	16	1000	161.346.005			161.346.015		
	50	40	16	1600	161.346.006			161.346.016		
	63	50	16	3100	161.346.007			161.346.017		
<b>With solvent cement spigots ISO/DIN DIN 3202 standard size Metric</b>	16	10	16	71	161.346.041			161.346.051		
	20	15	16	185	161.346.042			161.346.052		
	25	20	16	350	161.346.043			161.346.053		
	32	25	16	700	161.346.044			161.346.054		
	40	32	16	1000	161.346.045			161.346.055		
	50	40	16	1600	161.346.046			161.346.056		
	63	50	16	3100	161.346.047			161.346.057		
<b>With PE fusion sockets ISO/DIN PN10 Metric</b>	16	10	10	71	161.346.101			161.346.111		
	20	15	10	185	161.346.102			161.346.112		
	25	20	10	350	161.346.103			161.346.113		
	32	25	10	700	161.346.104			161.346.114		
	40	32	10	1000	161.346.105			161.346.115		
	50	40	10	1600	161.346.106			161.346.116		
	63	50	10	3100	161.346.107			161.346.117		

## PVC-U 2-Way Ball Valves, Type 346



### Model:

- Union ends for easy installation and removal
- Pneumatic or electric actuator available separately
- Range of sizes: DN 10–50  
3/8"–2"  
d 16–63

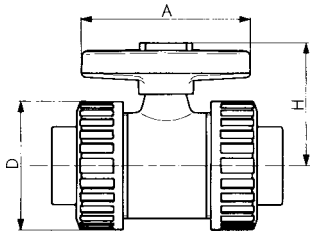
### Types available

	d		PN	k <sub>v</sub> value l/min Δp=1bar	Seal material EPDM		FPM Code	£		
	mm	mm in.			Code	£				
<b>With PE butt fusion ends ISO/DIN PN 6 Metric</b>	16	10	6	71	–		–			
	20	15	6	185	–		–			
	25	20	6	350	<b>161.346.123</b>		<b>161.346.133</b>			
	32	25	6	700	<b>161.346.124</b>		<b>161.346.134</b>			
	40	32	6	1000	<b>161.346.125</b>		<b>161.346.135</b>			
	50	40	6	1600	<b>161.346.126</b>		<b>161.346.136</b>			
	63	50	6	3100	<b>161.346.127</b>		<b>161.346.137</b>			
<b>With PE butt fusion ends ISO/DIN PN 10 Metric</b>	16	10	10	71	<b>161.346.141</b>		<b>161.346.151</b>			
	20	15	10	185	<b>161.346.142</b>		<b>161.346.152</b>			
	25	20	10	350	<b>161.346.143</b>		<b>161.346.153</b>			
	32	25	10	700	<b>161.346.144</b>		<b>161.346.154</b>			
	40	32	10	1000	<b>161.346.145</b>		<b>161.346.155</b>			
	50	40	10	1600	<b>161.346.146</b>		<b>161.346.156</b>			
	63	50	10	3100	<b>161.346.147</b>		<b>161.346.157</b>			
<b>Special model* with solvent cement sockets ISO/DIN</b> silicon-free with PVDF ball seal <b>Metric</b>	16	10	16	71	<b>161.346.601</b>		<b>161.346.611</b>			
	20	15	16	185	<b>161.346.602</b>		<b>161.346.612</b>			
	25	20	16	350	<b>161.346.603</b>		<b>161.346.613</b>			
	32	25	16	700	<b>161.346.604</b>		<b>161.346.614</b>			
	40	32	16	1000	<b>161.346.605</b>		<b>161.346.615</b>			
	50	40	16	1600	<b>161.346.606</b>		<b>161.346.616</b>			
	63	50	16	3100	<b>161.346.607</b>		<b>161.346.617</b>			
<b>Special model* with solvent cement spigots ISO/DIN</b> silicon-free with PVDF ball seal <b>Metric</b>	16	10	16	71	<b>161.346.621</b>		<b>161.346.631</b>			
	20	15	16	185	<b>161.346.622</b>		<b>161.346.632</b>			
	25	20	16	350	<b>161.346.623</b>		<b>161.346.633</b>			
	32	25	16	700	<b>161.346.624</b>		<b>161.346.634</b>			
	40	32	16	1000	<b>161.346.625</b>		<b>161.346.635</b>			
	50	40	1 1/2	16	1600	<b>161.346.626</b>		<b>161.346.636</b>		
	63	50	2	16	3100	<b>161.346.627</b>		<b>161.346.637</b>		
<b>With fixed flanges ISO/BS 4504</b>	20	15	1/2	16	185	<b>161.346.182</b>		<b>161.346.192</b>		
	25	20	3/4	16	350	<b>161.346.183</b>		<b>161.346.193</b>		
	32	25	1	16	700	<b>161.346.184</b>		<b>161.346.194</b>		
	40	32	1 1/4	16	1000	<b>161.346.185</b>		<b>161.346.195</b>		
	50	40	1 1/2	16	1600	<b>161.346.186</b>		<b>161.346.196</b>		
	63	50	2	16	3100	<b>161.346.187</b>		<b>161.346.197</b>		

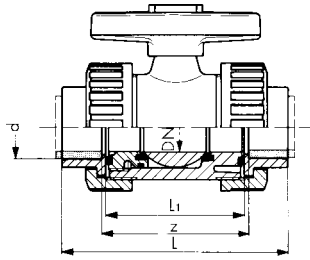
\* available to order

Note:- Silicon Free inch size valves available to order.

## Dimensions

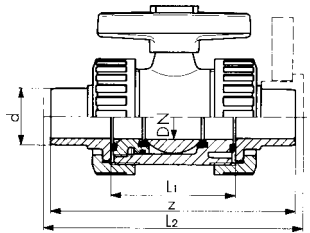


d mm	DN mm	in.	z mm	A mm	D mm	H mm	L mm	L <sub>1</sub> mm	L <sub>2</sub> mm	Rp in.	PVC-U/PVC-C weight
16	10	3/8		78	46	50					
20	15	1/2		78	46	50					
25	20	3/4		92	56	60					
32	25	1		100	67	70					
40	32	1 1/4		110	82	80					
50	40	1 1/2		120	98	92					
63	50	2		146	120	110					



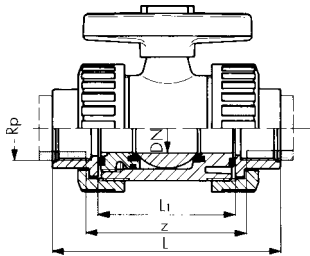
16	10	3/8	71				99	63			0.150/0.160
20	15	1/2	70				102	63			0.150/0.160
25	20	3/4	82				120	75			0.250/0.270
32	25	1	87				131	79			0.360/0.390
40	32	1 1/4	98				150	89			0.600/0.650
50	40	1 1/2	101				163	95			0.930/1.010
63	50	2	121				197	115			1.700/1.850

with solvent cement sockets



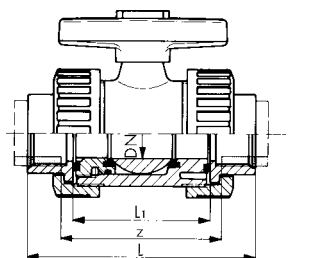
16	10	3/8					114	63	120		0.150
20	15	1/2					124	63	130		0.150
25	20	3/4					144	75	150		0.250
32	25	1					154	79	160		0.360
40	32	1 1/4					174	89	180		0.600
50	40	1 1/2					194	95	200		0.930
63	50	2					224	115	230		1.700

with solvent cement spigots



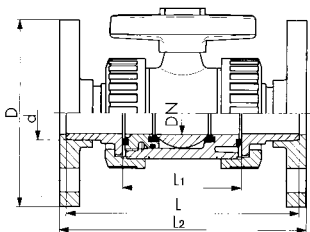
16	10	3/8	67				99	63		3/8	0.150
20	15	1/2	67				102	63		1/2	0.150
25	20	3/4	79				120	75		3/4	0.250
32	25	1	83				131	79		1	0.360
40	32	1 1/4	96				150	89		1 1/4	0.600
50	40	1 1/2	109				163	95		1 1/2	0.930
63	50	2	135				197	115		2	1.700

with threaded sockets (Rp)



16	10	3/8	69				99	63			0.150
20	15	1/2	69				101	63			0.150
25	20	3/4	81				117	75			0.250
32	25	1	85				125	79			0.360
40	32	1 1/4	95				139	89			0.600
50	40	1 1/2	101				151	95			0.930
63	50	2	121				179	115			1.700

with PE fusion sockets



20	15	1/2					124	63	130		0.360
25	20	3/4					144	75	150		0.540
32	25	1					154	79	160		0.760
40	32	1 1/4					174	89	180		1.230
50	40	1 1/2					194	95	200		1.700
63	50	2					224	115	230		2.740

with fixed flanges

# PVC-U 2-Way Ball Valves for water, Type 355/354/353

## Model:

- Range of size: DN 10–50  
 $\frac{3}{8}''$ –2''  
d 16–63



With solvent cement sockets BS Inch

## Type 355 with two union ends

d	DN		PN	k <sub>v</sub> value l/min Δp=1bar	Seal material EPDM		FPM	
	mm	in.			Code	£	Code	£
		1/2	16	185	161.355.202			
		3/4	16	350	161.355.203			
		1	16	700	161.355.204			
		1 1/4	16	1000	161.355.205			
		1 1/2	16	1600	161.355.206			
		2	16	3100	161.355.207			

With threaded sockets ISO with BSP parallel female thread (Rp)

	15	1/2	10	185	161.355.022			
	20	3/4	10	350	161.355.023			
	25	1	10	700	161.355.024			
	32	1 1/4	10	1000	161.355.025			
	40	1 1/2	10	1600	161.355.026			
	50	2	10	3100	161.355.027			

With solvent cement sockets ISO/DIN Metric

	20	15	16	185	161.355.002			
	25	20	16	350	161.355.003			
	32	25	16	700	161.355.004			
	40	32	16	1000	161.355.005			
	50	40	16	1600	161.355.006			
	63	50	16	3100	161.355.007			



With solvent cement sockets BS Inch

## Type 354 with one union end

d	DN		PN	k <sub>v</sub> value l/min Δp=1bar	Seal material EPDM		FPM	
	mm	in.			Code	£	Code	£
		1/2	16	185	161.354.302			
		3/4	16	350	161.354.303			
		1	16	700	161.354.304			
		1 1/4	16	1000	161.354.305			
		1 1/2	16	1600	161.354.306			
		2	16	3100	161.354.307			

With threaded sockets ISO with BSP parallel female thread (Rp)

	15	1/2	10	185	161.354.022			
	20	3/4	10	350	161.354.023			
	25	1	10	700	161.354.024			
	32	1 1/4	10	1000	161.354.025			
	40	1 1/2	10	1600	161.354.026			
	50	2	10	3100	161.354.027			

With solvent cement sockets ISO/DIN Metric

	20	15	16	185	161.354.002			
	25	20	16	350	161.354.003			
	32	25	16	700	161.354.004			
	40	32	16	1000	161.354.005			
	50	40	16	1600	161.354.006			
	63	50	16	3100	161.354.007			

Note: Type 353, 354 & 355 have EPDM O-rings and special lubricated PE seats



With solvent cement sockets BS/ANSI Inch

## Type 353 with two socket ends

d	DN		PN	k <sub>v</sub> value l/min Δp=1bar	Seal material EPDM		FPM	
	mm	in.			Code	£	Code	£
	15	1/2	16	185	<b>161.353.302</b>			
	20	3/4	16	350	<b>161.353.303</b>			
	25	1	16	700	<b>161.353.304</b>			
	32	1 1/4	16	1000	<b>161.353.305</b>			
	40	1 1/2	16	1600	<b>161.353.306</b>			
	50	2	16	3100	<b>161.353.307</b>			

With threaded sockets ISO with BSP parallel female thread (Rp)

	15	1/2	10	185	<b>161.353.022</b>			
	20	3/4	10	350	<b>161.353.023</b>			
	25	1	10	700	<b>161.353.024</b>			
	32	1 1/4	10	1000	<b>161.353.025</b>			
	40	1 1/2	10	1600	<b>161.353.026</b>			
	50	2	10	3100	<b>161.353.027</b>			

With solvent cement sockets ISO/DIN Metric

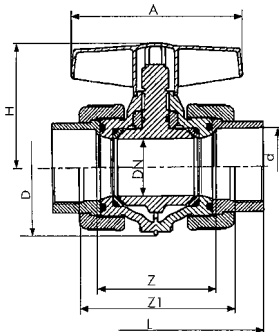
20	15		16	185	<b>161.353.002</b>			
25	20		16	350	<b>161.353.003</b>			
32	25		16	700	<b>161.353.004</b>			
40	32		16	1000	<b>161.353.005</b>			
50	40		16	1600	<b>161.353.006</b>			
63	50		16	3100	<b>161.353.007</b>			

Note: Type 353, 354 & 355 have EPDM O-rings and special lubricated PE seats

## Dimensions

### Type 355

with solvent cement sockets (Inch)



d	DN	z	z <sub>1</sub>	A	D	H	L	Rp	PVC-U weight
mm	mm	in.	mm	mm	mm	mm	mm	in.	
		1/2	60	78	49	51	95		130
		3/4	66	92	54	58	107.2		182
		1	69	92	64	62.5	116.6		258
		1 1/4	80	116	78	76.5	137		452
		1 1/2	85	116	90	83	145.2		586
		2	97	140	112	101.5	170		1079

with threaded sockets (Rp)

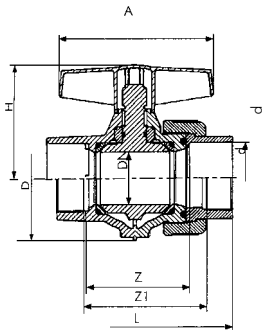
	15	1/2	66	78	49	51	92		130
	20	3/4	74	92	54	58	104		182
	25	1	79	92	64	62.5	113		262
	32	1 1/4	94	116	78	76.5	132		452
	40	1 1/2	109	116	90	83	147		606
	50	2	127	140	112	101.5	173		1039

with solvent cement spigots (mm)

20	15		60	78	49	51	92		130
25	20		66	92	54	58	104		180
32	25		69	92	64	62.5	113		262
40	32		80	116	78	76.5	132		450
50	40		85	116	90	83	147		568
63	50		97	140	112	101.5	173		1027

## Dimensions

### Type 354



with solvent cement sockets (Inch)

d mm	DN mm	in.	z mm	z <sub>1</sub> mm	A mm	D mm	H mm	L mm		Rp in.	PVC-U weight
15	15	1/2	46.3		78	49	51.0	86.5			102
20	20	3/4	52.2		92	54	58.0	98.2			141
25	25	1	58.3		92	64	62.5	110.7			198
32	32	1 1/4	67.8		116	78	76.5	128.1			337
40	40	1 1/2	75.5		116	90	83.0	140.6			456
50	50	2	90.0		140	112	101.5	165.0			863

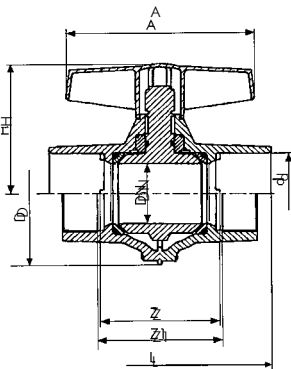
with threaded sockets (Rp)

15	15	1/2		53.0	78	49	51.0	81.0			130
20	20	3/4		59.3	92	54	58.0	90.8			182
25	25	1		67.9	92	64	62.5	103.9			262
32	32	1 1/4		79.9	116	78	76.5	120.4			452
40	40	1 1/2		91.7	116	90	83.0	132.2			606
50	50	2		110.0	140	112	101.5	159.0			1039

with solvent cement spigots (mm)

20	15		48.5		78	49	51.0	80.5			102
25	20		54.3		92	54	58.0	92.3			140
32	25		60.4		92	64	62.5	104.4			200
40	32		70.4		116	78	76.5	122.4			336
50	40		78.2		116	90	83.0	140.2			447
63	50		93.0		140	112	101.5	169.0			837

### Type 353



with solvent cement sockets (Inch)

d mm	DN mm	in.	z mm	z <sub>1</sub> mm	A mm	D mm	H mm	L mm		Rp in.	PVC-U weight
15	15	1/2	32.7		78	49	51.0	77.2			74
20	20	3/4	38.4		92	54	58.0	89.2			97
25	25	1	47.6		92	64	62.5	104.8			138
32	32	1 1/4	55.6		116	78	76.5	119.1			222
40	40	1 1/2	66.1		116	90	83.0	136.0			310
50	50	2	83.0		140	112	101.5	160.0			647

with threaded sockets (Rp)

15	15	1/2		40.0	78	49	51.0	70			74
20	20	3/4		44.6	92	54	58.0	77.6			97
25	25	1		56.8	92	64	62.5	94.8			138
32	32	1 1/4		65.8	116	78	76.5	108.8			222
40	40	1 1/2		74.4	116	90	83.0	117.4			310
50	50	2		93.0	140	112	101.5	145.0			647

with solvent cement spigots (mm)

20	15		37.0		78	49	51.0	69.0			74
25	20		42.6		92	54	58.0	80.6			97
32	25		51.8		92	64	62.5	95.8			138
40	32		60.8		116	78	76.5	112.8			222
50	40		71.4		116	90	83.0	133.4			310
63	50		89.0		140	112	101.5	165.0			647

**Note: Type 353, 354 & 355 have EPDM O-rings and special lubricated PE seats**