

## Cable sleeve - CES-LTPG-GY-32 - 0801706

Please be informed that the data shown in this PDF Document is generated from our Online Catalog. Please find the complete data in the user's documentation. Our General Terms of Use for Downloads are valid (<http://download.phoenixcontact.com>)

Large, slotted cable sleeves suitable for cables with a diameter of 31 ... 32 mm, material: SEBS



### Product description

Slotted sleeves for accommodating pre-assembled cables and lines with a diameter of 31 ... 32 mm, can be used in CES sealing frames. When fitted, the sleeves also ensure strain relief according to DIN EN 50262.



### Key commercial data

|                                      |   |
|--------------------------------------|---|
| Packing unit                         | 10 pc   |
| GTIN                                 | <br>4 046356 749176 |
| Weight per Piece (excluding packing) | 19.53 g   |
| Custom tariff number                 | 85472000  |
| Country of origin                    | Poland  |

### Technical data

#### Dimensions

|                         |                    |
|-------------------------|--------------------|
| External cable diameter | 1x 31 mm ... 32 mm |
|-------------------------|--------------------|

#### Ambient conditions

|                                 |   |
|---------------------------------|---|
| Degree of protection            | IP54  |
|                                 | IP55 (when using a CES-B...-SFFS-PLBK sealing frame with screw locking) |
| Ambient temperature (operation) | -40 °C ... 80 °C (static)   |

#### General

|   |  |
|---|--|
| Product description                     | Slotted sleeves for accommodating pre-assembled cables and lines with a diameter of 31 ... 32 mm, can be used in CES sealing frames. When fitted, the sleeves also ensure strain relief according to DIN EN 50262. |
| Material                                | SEBS   |
| Inflammability class according to UL 94 | V0   |
| Color                                   | gray   |

# Cable sleeve - CES-LTPG-GY-32 - 0801706

## Classifications

### eCl@ss

|            |          |
|------------|----------|
| eCl@ss 4.0 | 27081002 |
| eCl@ss 4.1 | 27081002 |
| eCl@ss 5.0 | 27081002 |
| eCl@ss 5.1 | 27081002 |
| eCl@ss 6.0 | 27081002 |
| eCl@ss 7.0 | 27081002 |
| eCl@ss 8.0 | 27081002 |

### ETIM

|          |          |
|----------|----------|
| ETIM 3.0 | EC000879 |
| ETIM 4.0 | EC000451 |
| ETIM 5.0 | EC000451 |

### UNSPSC

|               |          |
|---------------|----------|
| UNSPSC 6.01   | 30212109 |
| UNSPSC 7.0901 | 39121708 |
| UNSPSC 11     | 39121708 |
| UNSPSC 12.01  | 39121708 |
| UNSPSC 13.2   | 39121708 |

## Approvals

### Approvals

---

#### Approvals

UL Recognized / cUL Recognized / cULus Recognized

---

#### Ex Approvals

---

#### Approvals submitted


---


#### Approval details

|   |
|---|
| UL Recognized  |
|---|

# Cable sleeve - CES-LTPG-GY-32 - 0801706

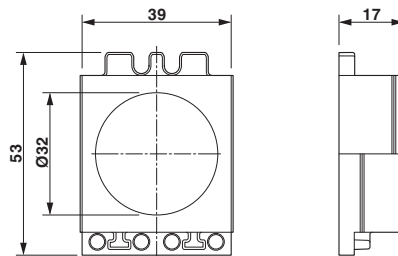
## Approvals

cUL Recognized 

cULus Recognized 

## Drawings

Dimensioned drawing



Dimensional drawing