

igus<sup>®</sup>



**iglide<sup>®</sup> M250**

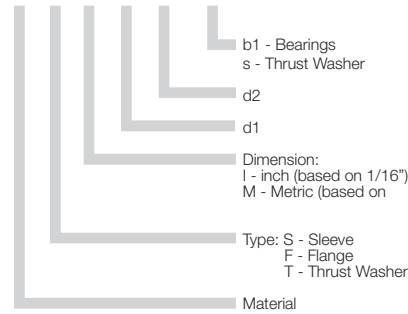
### Product Range

- Standard Styles:  
Sleeve, Flange and Thrust Washer
- Custom shapes and sizes available
- Inner diameters:  
Inch sizes from 1/8 - 2-1/4 in.  
Metric sizes from 1 - 75 mm

### Part Number Structure

#### Part Number Structure

#### M S I - 02 03 - 03



### Permissible Surface Speeds

	Continuous fpm	Short Term fpm
Rotating	157	393
Oscillating	118	275
Linear	492	984

### Usage Guidelines



- When the bearings are exposed to high amounts of dirt
- When high vibration dampening is necessary
- For low to average speeds
- For edge loads
- When mechanical reaming of the ID is necessary



- When very high precision is necessary  
➤ iglide® P
- For very smooth shafts  
➤ iglide® J
- When high moisture is present  
➤ iglide® R



Visit [www.igus.com](http://www.igus.com)  
to use our online  
expert system

### Material Table

General Properties	Unit	iglide® M250	Testing Method
Density	g/cm <sup>3</sup>	1.14	
Color		charcoal	
Max. moisture absorption at 73°F / 50% r.h.	% weight	1.4	DIN 53495
Max. moisture absorption	% weight	7.6	
Coefficient of friction, dynamic against steel	μ	0.1 - 0.3	
p x v value, max. (dry)	psi x fpm	3,400	

### Mechanical Properties

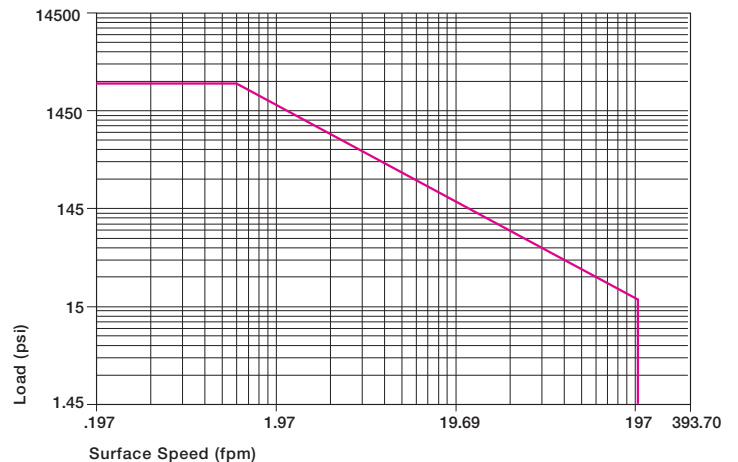
Modulus of elasticity	psi	391,600	DIN 53457
Tensile strength at 68°F	psi	16,240	DIN 53452
Compressive strength	psi	7,540	
Permissible static surface pressure (68°F)	psi	2,901	
Shore D-hardness		79	DIN 53505

### Physical and Thermal Properties

Max. long-term application temperature	°F	176	
Max. application temperature, short-term	°F	338	
Min. application temperature	°F	-40	
Thermal conductivity	W/m x K	0.24	ASTM C 177
Coefficient of thermal expansion	K <sup>-1</sup> x 10 <sup>-5</sup>	10	DIN 53752

### Electrical Properties

Specific volume resistance	Ωcm	> 10 <sup>13</sup>	DIN IEC 93
Surface resistance	Ω	> 10 <sup>11</sup>	DIN 53482



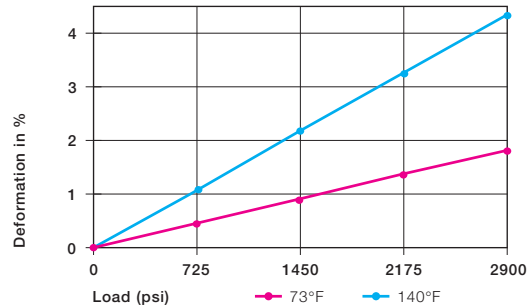
Graph 2.1: Permissible p x v value for iglide® M250 running dry against a steel shaft, at 68°F

The self-lubricating plain bearings made of iglide® M250 are defined by their impact strength, vibration dampening, and wear resistant properties. They excel in applications in which vibration dampening is necessary, for example, in fitness and packaging machines. Since they are additionally able to absorb dirt, they are also suited for agricultural machines and garden appliances.

## Compressive Strength

iglide® M250 plain bearings can withstand radial loads of a maximum 2900 psi. The material deformation is below 2% at room temperature. Compared with other iglide® materials, iglide® M250 bearings are highly elastic. By this elasticity, they are able to yield very well, but retain their original shape again. Plastic deformation is minimal up to the permissible surface pressure.

► Compressive Strength, Page 1.3



Graph 2.2: Deformation under load and temperature

## Permissible Surface Speeds

iglide® M250 is manufactured standard as a thick walled bearing. iglide® M250 is best suited for low to medium surface speeds. The maximum permissible speed for dry running applications is 157 fpm (rotating) or 393 fpm (linear).

► Surface Speed, Page 1.5  
► P x V value, Page 1.6

	Continuous fpm	Short Term fpm
Rotating	157	393
Oscillating	118	275
Linear	492	984

Table 2.2: Maximum surface speeds

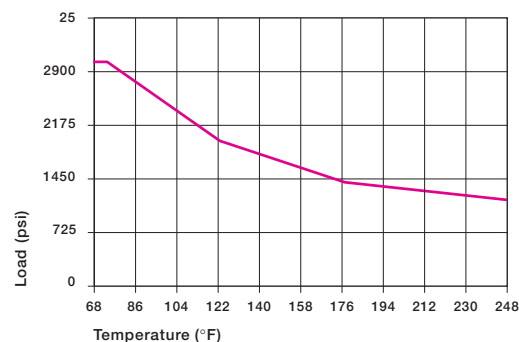
## Temperatures

The maximum permissible short-term temperature is 338°F. However, iglide® M250 plain bearings may only be exposed to this temperature without any additional load. The long-term permissible application temperature is 176°F. This is also the location of the wear limit, i.e. the temperature at which the wear increases exponentially.

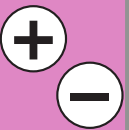
► Applications Temperatures, Page 1.7

iglide® M250	Application Temperature
Minimum	- 40°F
Max. long-term	+ 176°F
Max. short-term	+ 338°F

Table 2.3: Temperature limits for iglide® M250



Graph 2.3: Recommended maximum permissible static surface pressure of iglide® M250 as a result of the temperature



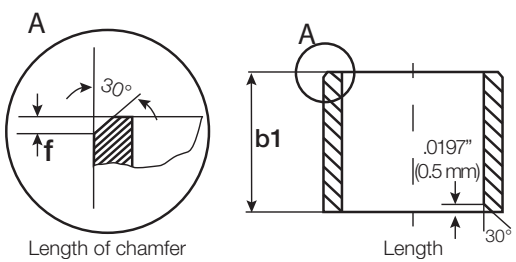
### Installation Tolerances

iglide® M250 plain bearings are oversized before being pressfit. After proper installation into a recommended housing bore, the inner diameter adjusts to meet our specified tolerances. Please adhere to the catalog specifications for housing bore and recommended shaft sizes. This will help to ensure optimal performance of iglide® plain bearings.

- See Tolerance Table, Page 1.14
- Testing Methods, Page 1.15

For Inch Size Bearings		
Length Tolerance (b1)		Length of Chamfer (f)
Length (inches)	Tolerance (h13) (inches)	Based on d1
0.1181 to 0.2362	-0.0000 /-0.0071	f = .012 → d <sub>1</sub> .040" - .236"
0.2362 to 0.3937	-0.0000 /-0.0087	f = .019 → d <sub>1</sub> > .236" - .472"
0.3937 to 0.7086	-0.0000 /-0.0106	f = .031 → d <sub>1</sub> > .472" - 1.18"
0.7086 to 1.1811	-0.0000 /-0.0130	f = .047 → d <sub>1</sub> > 1.18"
1.1811 to 1.9685	-0.0000 /-0.0154	
1.9685 to 3.1496	-0.0000 /-0.0181	

For Metric Size Bearings		
Length Tolerance (b1)		Length of Chamfer (f)
Length (mm)	Tolerance (h13) (µm)	Based on d1
1 to 3	-0 /-140	f = 0.3 → d <sub>1</sub> 1 - 6 mm
> 3 to 6	-0 /-180	f = 0.5 → d <sub>1</sub> > 6 - 12 mm
> 6 to 10	-0 /-220	f = 0.8 → d <sub>1</sub> > 12 - 30 mm
> 10 to 18	-0 /-270	
> 18 to 30	-0 /-330	
> 30 to 50	-0 /-390	
> 50 to 80	-0 /-460	



### Friction and Wear

The coefficient of friction  $\mu$  of a plain bearing is among other things, influenced by the surface speed and the load. If the load stays constant, then the coefficient of friction increases with increasing speed (see Graph 2.4). On the other hand, an increase in the load at constant speed can result in a reduction in the coefficient of friction (see Graph 2.5). Friction and wear are also greatly dependent on the surface of the shaft. For iglide® M250 a ground surface with an average roughness of 24 rms is recommended for the shaft.

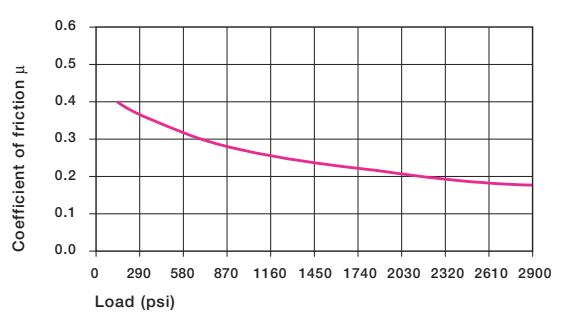
- Coefficients of Friction and Surfaces, Page 1.8
- Wear Resistance, Page 1.9



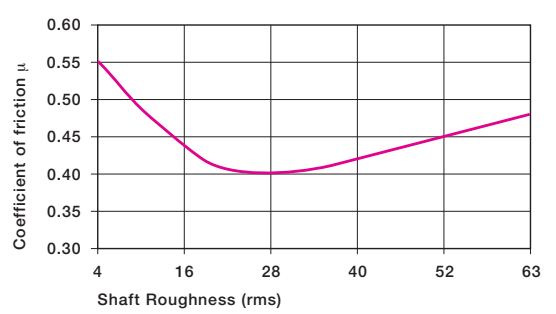
Graph 2.4: Coefficient of friction of iglide® M250 as a result of the surface speed; p = 108 psi

iglide® M250	Coefficient of Friction
Dry	0.18 - 0.40
Grease	0.09
Oil	0.04
Water	0.04

Table: Coefficients of friction iglide® M250 against steel (Shaft finish = 40 rms, 50 HRC)



Graph 2.5: Coefficient of friction of iglide® M250 as a result of the load, v = 1.97 fpm



Graph 2.6: Coefficient of friction for iglide® M250 as a result of the shaft surface (shaft Cold Rolled Steel)

## Shaft Materials

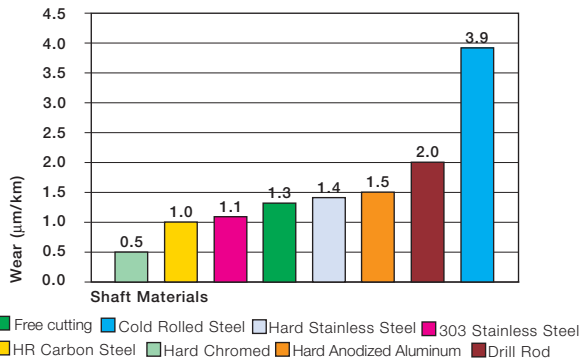
Graph 2.7 to 2.9 show results of testing different shaft materials with plain bearings made of iglide® M250.

Up to loads of 290 psi, the shaft material plays a relatively small role for rotational movements. Graph 2.7 best illustrates which shaft materials are best suited for smaller loads.

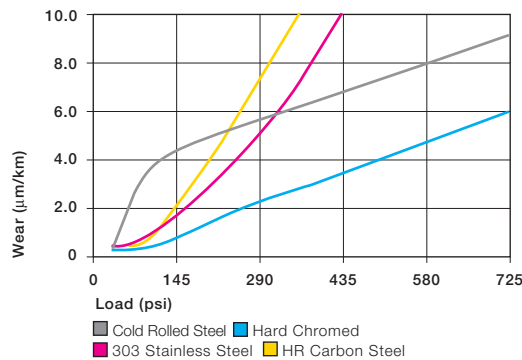
If the load increases, the wear of a bearing clearly increases. Therefore, a suitable shaft material must be considered for higher loads. These are hardened shafts, such as, for example, Cold Rolled Steel or hard-chromed shafts.

Graph 2.9 makes it clear that iglide® M250 is considerably better for rotational than for oscillating operation. However, it must be mentioned that in oscillating movements, often the vibrations that act on the bearings are especially high. Here, iglide® M250 can utilize its special dampening properties. In our test, these vibrations are excluded so that the comparison between rotation and oscillating operation is captured first.

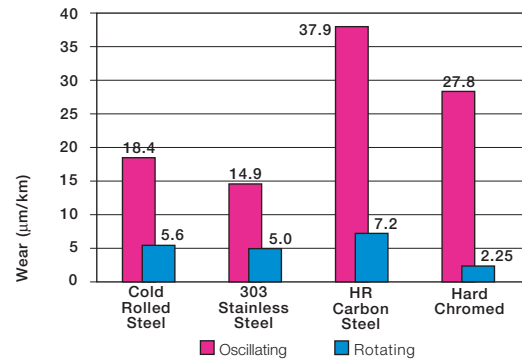
➤ Shaft Materials, Page 1.11



Graph 2.7: Wear for iglide® M250, rotating with different shaft materials, p = 108 psi, v=98 fpm



Graph 2.8: Wear of iglide® M250 with different shaft materials in rotational operation



Graph 2.9: Wear for oscillating and rotating applications with different shaft materials at p = 290 psi

## Chemical & Moisture Resistance

iglide® M250 plain bearings have a good resistance to chemicals. They are resistant to most lubricants. They are not affected by most weak organic and inorganic acids

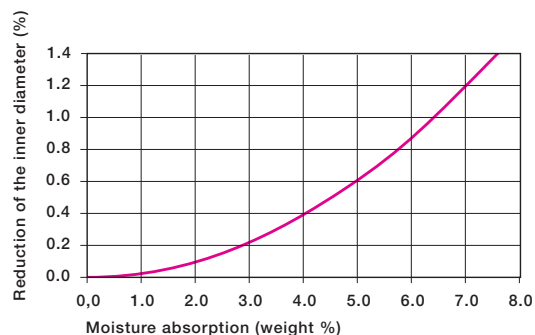
The moisture absorption of iglide® M250 plain bearings is approximately 1.4% in standard atmosphere. The saturation limit in water is 7.5%. This must be taken into account along with other applicable conditions.

➤ Chemical Resistance, Page 1.16

Medium	Resistance
Alcohol	+ to 0
Hydrocarbon, chlorinated	+
Greases, oils without additives	+
Fuels	+
Weak acids	0 to -
Strong acids	-
Weak alkaline	+
Strong alkaline	0

+ resistant, 0 conditionally resistant, - not resistant

Table 2.5: Chemical resistance of iglide® M250  
All data given concerns the chemical resistance at room temperature (68°F). For a complete list, see page 1.16



Graph 2.10: Effect of moisture absorption on iglide® M250 plain bearings

## Radiation Resistance

Plain bearings made from iglide® M250 can be used conditionally under radioactive radiation. They are resistant to radiation up to a radiation intensity of 1000 Gy.

## UV Resistance

iglide® M250 plain bearings are permanently resistant to UV radiation.

## Vacuum

In a vacuum environment, the iglide® M250 plain bearing releases moisture as vapor. The relatively high moisture absorption of the bearing allows only limited use in the vacuum.

## Electrical Properties

iglide® M250 plain bearings are electrically insulating.

### iglide® M250

Specific volume resistance	> 10 <sup>13</sup> Ωcm
Surface resistance	> 10 <sup>11</sup> Ω

Table 2.6: Electrical properties of iglide® M250

## Application Examples



Picture 2.1: Paper dust in this mail sorting device always led to an early malfunction of the previous bearings used. Problem solved.

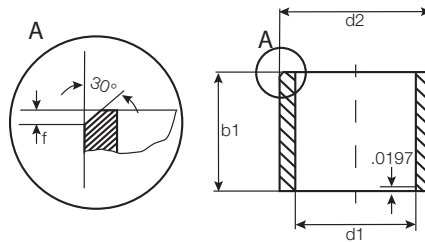


Picture 2.2: Precision mechanical gears need plain bearings with especially universal properties



Picture 2.3: In this analytical pump, sewage water is tested with chemicals and floating particles

# iglide® Plain Bearings M250 - Sleeve Bearing, Inch

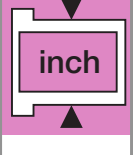


For tolerance values  
please refer to page 2.4

iglide® M250  
Sleeve - Inch

Part Number	d1	d2	b1	I.D. After Pressfit		Housing Bore		Shaft Size	
				Max.	Min.	Max.	Min.	Max.	Min.
MSI-0203-02	1/8	3/16	1/8	.1280	.1262	.1880	.1875	.1250	.1241
MSI-0203-04	1/8	3/16	1/4	.1280	.1262	.1880	.1875	.1250	.1241
MSI-0204-02	1/8	1/4	1/8	.1280	.1262	.2515	.2510	.1250	.1241
MSI-0204-03	1/8	1/4	3/16	.1280	.1262	.2515	.2510	.1250	.1241
MSI-0204-04	1/8	1/4	1/4	.1280	.1262	.2515	.2510	.1250	.1241
MSI-0204-06	1/8	1/4	3/8	.1280	.1262	.2515	.2510	.1250	.1241
MSI-0304-04	3/16	1/4	1/4	.1905	.1887	.2515	.2510	.1875	.1866
MSI-0304-06	3/16	1/4	3/8	.1905	.1887	.2515	.2510	.1875	.1866
MSI-0304-08	3/16	1/4	1/2	.1905	.1887	.2515	.2510	.1875	.1866
MSI-0305-02	3/16	5/16	1/8	.1905	.1887	.3140	.3135	.1875	.1866
MSI-0305-03	3/16	5/16	3/16	.1905	.1887	.3140	.3135	.1875	.1866
MSI-0305-04	3/16	5/16	1/4	.1905	.1887	.3140	.3135	.1875	.1866
MSI-0305-05	3/16	5/16	5/16	.1905	.1887	.3140	.3135	.1875	.1866
MSI-0305-06	3/16	5/16	3/8	.1905	.1887	.3140	.3135	.1875	.1866
MSI-0305-08	3/16	5/16	1/2	.1905	.1887	.3140	.3135	.1875	.1866
MSI-0405-03	1/4	5/16	3/16	.2539	.2516	.3140	.3135	.2500	.2491
MSI-0405-04	1/4	5/16	1/4	.2539	.2516	.3140	.3135	.2500	.2491
MSI-0405-06	1/4	5/16	3/8	.2539	.2516	.3140	.3135	.2500	.2491
MSI-0405-08	1/4	5/16	1/2	.2539	.2516	.3140	.3135	.2500	.2491
MSI-0406-02	1/4	3/8	1/8	.2539	.2516	.3765	.3760	.2500	.2491
MSI-0406-03	1/4	3/8	3/16	.2539	.2516	.3765	.3760	.2500	.2491
MSI-0406-04	1/4	3/8	1/4	.2539	.2516	.3765	.3760	.2500	.2491
MSI-0406-05	1/4	3/8	5/16	.2539	.2516	.3765	.3760	.2500	.2491
MSI-0406-06	1/4	3/8	3/8	.2539	.2516	.3765	.3760	.2500	.2491
MSI-0406-08	1/4	3/8	1/2	.2539	.2516	.3765	.3760	.2500	.2491
MSI-0406-10	1/4	3/8	5/8	.2539	.2516	.3765	.3760	.2500	.2491
MSI-0406-12	1/4	3/8	3/4	.2539	.2516	.3765	.3760	.2500	.2491
MSI-0506-03	5/16	3/8	3/16	.3164	.3141	.3765	.3760	.3125	.3116
MSI-0506-04	5/16	3/8	1/4	.3164	.3141	.3765	.3760	.3125	.3116
MSI-0506-06	5/16	3/8	3/8	.3164	.3141	.3765	.3760	.3125	.3116
MSI-0506-08	5/16	3/8	1/2	.3164	.3141	.3765	.3760	.3125	.3116
MSI-0507-03	5/16	7/16	3/16	.3164	.3141	.4390	.4385	.3125	.3116
MSI-0507-04	5/16	7/16	1/4	.3164	.3141	.4390	.4385	.3125	.3116
MSI-0507-05	5/16	7/16	5/16	.3164	.3141	.4390	.4385	.3125	.3116
MSI-0507-06	5/16	7/16	3/8	.3164	.3141	.4390	.4385	.3125	.3116
MSI-0507-08	5/16	7/16	1/2	.3164	.3141	.4390	.4385	.3125	.3116
MSI-0507-10	5/16	7/16	5/8	.3164	.3141	.4390	.4385	.3125	.3116
MSI-0507-12	5/16	7/16	3/4	.3164	.3141	.4390	.4385	.3125	.3116
MSI-0607-04	3/8	7/16	1/4	.3789	.3766	.4390	.4385	.3750	.3741
MSI-0607-06	3/8	7/16	3/8	.3789	.3766	.4390	.4385	.3750	.3741
MSI-0607-08	3/8	7/16	1/2	.3789	.3766	.4390	.4385	.3750	.3741

PDF: [www.igus.com/iglide-pdfs](http://www.igus.com/iglide-pdfs)  
CAD: [www.igus.com/iglide-CAD](http://www.igus.com/iglide-CAD)  
RoHS info: [www.igus.com/RoHS](http://www.igus.com/RoHS)

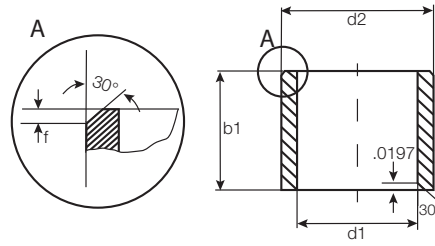


M250



# iglide® Plain Bearings M250 - Sleeve Bearing, Inch

iglide® M250



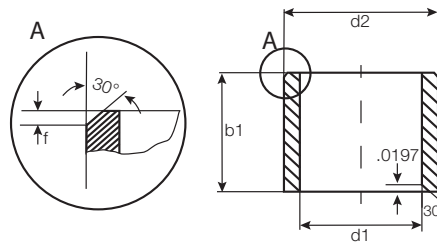
For tolerance values  
please refer to page 2.4

Telephone 1-800-521-2747  
Fax 1-401-438-7270

Internet: <http://www.igus.com>  
email: [sales@igus.com](mailto:sales@igus.com)  
QuickSpec: <http://www.igus.com/iglide-quickspec>

Part Number	d1	d2	b1	I.D. After Pressfit		Housing Bore		Shaft Size	
				Max.	Min.	Max.	Min.	Max.	Min.
MSI-0608-03	3/8	1/2	3/16	.3789	.3766	.5015	.5010	.3750	.3741
MSI-0608-04	3/8	1/2	1/4	.3789	.3766	.5015	.5010	.3750	.3741
MSI-0608-05	3/8	1/2	5/16	.3789	.3766	.5015	.5010	.3750	.3741
MSI-0608-06	3/8	1/2	3/8	.3789	.3766	.5015	.5010	.3750	.3741
MSI-0608-08	3/8	1/2	1/2	.3789	.3766	.5015	.5010	.3750	.3741
MSI-0608-10	3/8	1/2	5/8	.3789	.3766	.5015	.5010	.3750	.3741
MSI-0608-12	3/8	1/2	3/4	.3789	.3766	.5015	.5010	.3750	.3741
MSI-0608-16	3/8	1/2	1	.3789	.3766	.5015	.5010	.3750	.3741
MSI-0709-06	7/16	9/16	3/8	.4422	.4395	.5635	.5625	.4375	.4365
MSI-0709-08	7/16	9/16	1/2	.4422	.4395	.5635	.5625	.4375	.4365
MSI-0810-04	1/2	5/8	1/4	.5047	.5020	.6260	.6250	.5000	.4990
MSI-0810-05	1/2	5/8	5/16	.5047	.5020	.6260	.6250	.5000	.4990
MSI-0810-06	1/2	5/8	3/8	.5047	.5020	.6260	.6250	.5000	.4990
MSI-0810-08	1/2	5/8	1/2	.5047	.5020	.6260	.6250	.5000	.4990
MSI-0810-10	1/2	5/8	5/8	.5047	.5020	.6260	.6250	.5000	.4990
MSI-0810-12	1/2	5/8	3/4	.5047	.5020	.6260	.6250	.5000	.4990
MSI-0810-16	1/2	5/8	1	.5047	.5020	.6260	.6250	.5000	.4990
MSI-1012-04	5/8	3/4	1/4	.6297	.6270	.7510	.7500	.6250	.6240
MSI-1012-06	5/8	3/4	3/8	.6297	.6270	.7510	.7500	.6250	.6240
MSI-1012-08	5/8	3/4	1/2	.6297	.6270	.7510	.7500	.6250	.6240
MSI-1012-10	5/8	3/4	5/8	.6297	.6270	.7510	.7500	.6250	.6240
MSI-1012-12	5/8	3/4	3/4	.6297	.6270	.7510	.7500	.6250	.6240
MSI-1012-16	5/8	3/4	1	.6297	.6270	.7510	.7500	.6250	.6240
MSI-1012-26	5/8	3/4	1 5/8	.6297	.6270	.7510	.7500	.6250	.6240
MSI-1013-06	5/8	13/16	3/8	.6297	.6270	.8135	.8125	.6250	.6240
MSI-1013-08	5/8	13/16	1/2	.6297	.6270	.8135	.8125	.6250	.6240
MSI-1013-10	5/8	13/16	5/8	.6297	.6270	.8135	.8125	.6250	.6240
MSI-1013-12	5/8	13/16	3/4	.6297	.6270	.8135	.8125	.6250	.6240
MSI-1013-16	5/8	13/16	1	.6297	.6270	.8135	.8125	.6250	.6240
MSI-1113-12	11/16	13/16	3/4	.6921	.6894	.8135	.8125	.6875	.6865
MSI-1113-14	11/16	13/16	7/8	.6921	.6894	.8135	.8125	.6875	.6865
MSI-1113-16	11/16	13/16	1	.6921	.6894	.8135	.8125	.6875	.6865
MSI-1214-06	3/4	7/8	3/8	.7559	.7525	.8760	.8750	.7500	.7490
MSI-1214-12	3/4	7/8	3/4	.7559	.7525	.8760	.8750	.7500	.7490
MSI-1214-16	3/4	7/8	1	.7559	.7525	.8760	.8750	.7500	.7490
MSI-1214-24	3/4	7/8	1 1/2	.7559	.7525	.8760	.8750	.7500	.7490
MSI-1216-06	3/4	1	3/8	.7559	.7525	1.0010	1.0000	.7500	.7490
MSI-1216-08	3/4	1	1/2	.7559	.7525	1.0010	1.0000	.7500	.7490
MSI-1216-10	3/4	1	5/8	.7559	.7525	1.0010	1.0000	.7500	.7490
MSI-1216-12	3/4	1	3/4	.7559	.7525	1.0010	1.0000	.7500	.7490
MSI-1216-16	3/4	1	1	.7559	.7525	1.0010	1.0000	.7500	.7490
MSI-1216-20	3/4	1	1 1/4	.7559	.7525	1.0010	1.0000	.7500	.7490

# iglide® Plain Bearings M250 - Sleeve Bearing, Inch

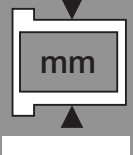
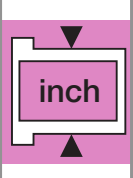


For tolerance values  
please refer to page 2.4

iglide® M250  
Sleeve - Inch

Part Number	d1	d2	b1	I.D. After Pressfit		Housing Bore		Shaft Size	
				Max.	Min.	Max.	Min.	Max.	Min.
MSI-1216-24	3/4	1	1 1/2	.7559	.7525	1.0010	1.0000	.7500	.7490
MSI-1316-08	13/16	1	1/2	.8184	.8151	1.0010	1.0000	.8126	.8116
MSI-1416-12	7/8	1	3/4	.8809	.8775	1.0010	1.0000	.8750	.8740
MSI-1416-16	7/8	1	1	.8809	.8775	1.0010	1.0000	.8750	.8740
MSI-1416-24	7/8	1	1 1/2	.8809	.8775	1.0010	1.0000	.8750	.8740
MSI-1418-08	7/8	1 1/8	1/2	.8809	.8775	1.1260	1.1250	.8750	.8740
MSI-1418-12	7/8	1 1/8	3/4	.8809	.8775	1.1260	1.1250	.8750	.8740
MSI-1418-16	7/8	1 1/8	1	.8809	.8775	1.1260	1.1250	.8750	.8740
MSI-1418-24	7/8	1 1/8	1 1/2	.8809	.8775	1.1260	1.1250	.8750	.8740
MSI-1618-12	1	1 1/8	3/4	1.0059	1.0025	1.1260	1.1250	1.0000	.9990
MSI-1618-16	1	1 1/8	1	1.0059	1.0025	1.1260	1.1250	1.0000	.9990
MSI-1618-24	1	1 1/8	1 1/2	1.0059	1.0025	1.1260	1.1250	1.0000	.9990
MSI-1620-08	1	1 1/4	1/2	1.0059	1.0025	1.2510	1.2500	1.0000	.9990
MSI-1620-10	1	1 1/4	5/8	1.0059	1.0025	1.2510	1.2500	1.0000	.9990
MSI-1620-12	1	1 1/4	3/4	1.0059	1.0025	1.2510	1.2500	1.0000	.9990
MSI-1620-16	1	1 1/4	1	1.0059	1.0025	1.2510	1.2500	1.0000	.9990
MSI-1620-24	1	1 1/4	1 1/2	1.0059	1.0025	1.2510	1.2500	1.0000	.9990
MSI-1620-32	1	1 1/4	2	1.0059	1.0025	1.2510	1.2500	1.0000	.9990
MSI-1822-16	1 1/8	1 3/8	1	1.1309	1.1275	1.3760	1.3750	1.1250	1.1240
MSI-1822-24	1 1/8	1 3/8	1 1/2	1.1309	1.1275	1.3760	1.3750	1.1250	1.1240
MSI-2024-12	1 1/4	1 1/2	3/4	1.2600	1.2531	1.5005	1.4995	1.2500	1.2490
MSI-2024-16	1 1/4	1 1/2	1	1.2600	1.2531	1.5005	1.4995	1.2500	1.2490
MSI-2024-22	1 1/4	1 1/2	1 3/8	1.2600	1.2531	1.5005	1.4995	1.2500	1.2490
MSI-2024-24	1 1/4	1 1/2	1 1/2	1.2600	1.2531	1.5005	1.4995	1.2500	1.2490
MSI-2024-40	1 1/4	1 1/2	2 1/2	1.2600	1.2531	1.5005	1.4995	1.2500	1.2490
MSI-2226-16	1 3/8	1 5/8	1	1.3844	1.3782	1.6255	1.6245	1.3750	1.3740
MSI-2428-12	1 1/2	1 3/4	3/4	1.5100	1.5032	1.7505	1.7495	1.5000	1.4990
MSI-2428-16	1 1/2	1 3/4	1	1.5100	1.5032	1.7505	1.7495	1.5000	1.4990
MSI-2428-24	1 1/2	1 3/4	1 1/2	1.5100	1.5032	1.7505	1.7495	1.5000	1.4990
MSI-2428-40	1 1/2	1 3/4	2 1/2	1.5100	1.5032	1.7505	1.7495	1.5000	1.4990
MSI-2630-16	1 5/8	1 7/8	1	1.6350	1.6282	1.8755	1.8745	1.6250	1.6240
MSI-2832-08	1 3/4	2	1/2	1.7594	1.7531	2.0005	1.9995	1.7500	1.7490
MSI-2832-12	1 3/4	2	3/4	1.7594	1.7531	2.0005	1.9995	1.7500	1.7490
MSI-2832-16	1 3/4	2	1	1.7594	1.7531	2.0005	1.9995	1.7500	1.7490
MSI-2832-24	1 3/4	2	1 1/2	1.7594	1.7531	2.0005	1.9995	1.7500	1.7490
MSI-2832-40	1 3/4	2	2 1/2	1.7594	1.7531	2.0005	1.9995	1.7500	1.7490
MSI-3236-16	2	2 1/4	1	2.0100	2.0032	2.2505	2.2495	2.0000	1.9990
MSI-3236-24	2	2 1/4	1 1/2	2.0100	2.0032	2.2505	2.2495	2.0000	1.9990
MSI-3236-32	2	2 1/4	2	2.0100	2.0032	2.2505	2.2495	2.0000	1.9990
MSI-3236-40	2	2 1/4	2 1/2	2.0100	2.0032	2.2505	2.2495	2.0000	1.9990
MSI-4852-16	3	3 1/4	1	3.0114	3.0039	3.2505	3.2495	3.0000	2.9990

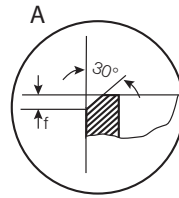
PDF: [www.igus.com/iglide-pdfs](http://www.igus.com/iglide-pdfs)  
CAD: [www.igus.com/iglide-CAD](http://www.igus.com/iglide-CAD)  
RoHS info: [www.igus.com/RoHS](http://www.igus.com/RoHS)



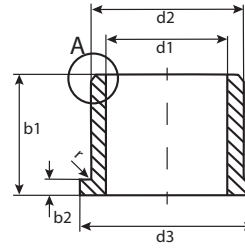
M250



# iglide® Plain Bearings M250 - Flange Bearing, Inch



$r = \text{max. } .0197$



For tolerance values  
please refer to page 2.4

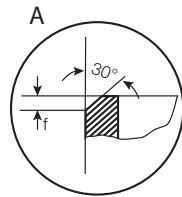
iglide® M250  
Flange - Inch

Telephone 1-800-521-2747  
Fax 1-401-438-7270

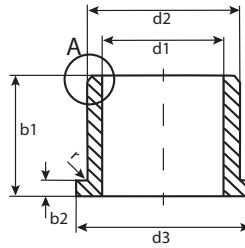
Internet: <http://www.igus.com>  
email: [sales@igus.com](mailto:sales@igus.com)  
QuickSpec: <http://www.igus.com/iglide-quickspec>

Part Number	d1	d2	b1	d3	b2	I.D. After Pressfit		Housing Bore		Shaft Size	
						Max.	Min.	Max.	Min.	Max.	Min.
MFI-0203-02	1/8	3/16	1/8	.3125	.032	.1280	.1262	.1885	.1880	.1250	.1241
MFI-0203-04	1/8	3/16	1/4	.3125	.032	.1280	.1262	.1885	.1880	.1250	.1241
MFI-0204-02	1/8	1/4	1/8	.360	.047	.1280	.1262	.2515	.2510	.1250	.1241
MFI-0204-03	1/8	1/4	3/16	.360	.047	.1280	.1262	.2515	.2510	.1250	.1241
MFI-0204-04	1/8	1/4	1/4	.360	.047	.1280	.1262	.2515	.2510	.1250	.1241
MFI-0204-06	1/8	1/4	3/8	.360	.047	.1280	.1262	.2515	.2510	.1250	.1241
MFI-0204-12	1/8	1/4	3/4	.360	.047	.1280	.1262	.2515	.2510	.1250	.1241
MFI-0304-04	3/16	1/4	1/4	.375	.032	.1905	.1887	.2515	.2510	.1875	.1866
MFI-0304-06	3/16	1/4	3/8	.375	.032	.1905	.1887	.2515	.2510	.1875	.1866
MFI-0304-08	3/16	1/4	1/2	.375	.032	.1905	.1887	.2515	.2510	.1875	.1866
MFI-0305-03	3/16	5/16	3/16	.370	.047	.1905	.1887	.3140	.3135	.1875	.1866
MFI-0305-04	3/16	5/16	1/4	.370	.047	.1905	.1887	.3140	.3135	.1875	.1866
MFI-0305-05	3/16	5/16	5/16	.370	.047	.1905	.1887	.3140	.3135	.1875	.1866
MFI-0305-06	3/16	5/16	3/8	.370	.047	.1905	.1887	.3140	.3135	.1875	.1866
MFI-0305-08	3/16	5/16	1/2	.370	.047	.1905	.1887	.3140	.3135	.1875	.1866
MFI-0405-02	1/4	5/16	1/8	.4375	.032	.2539	.2516	.3140	.3135	.2500	.2491
MFI-0405-03	1/4	5/16	3/16	.4375	.032	.2539	.2516	.3140	.3135	.2500	.2491
MFI-0405-04	1/4	5/16	1/4	.4375	.032	.2539	.2516	.3140	.3135	.2500	.2491
MFI-0405-06	1/4	5/16	3/8	.4375	.032	.2539	.2516	.3140	.3135	.2500	.2491
MFI-0405-07	1/4	5/16	7/16	.4375	.032	.2539	.2516	.3140	.3135	.2500	.2491
MFI-0405-08	1/4	5/16	1/2	.4375	.032	.2539	.2516	.3140	.3135	.2500	.2491
MFI-0405-12	1/4	5/16	3/4	.4375	.032	.2539	.2516	.3140	.3135	.2500	.2491
MFI-0406-02	1/4	3/8	1/8	.560	.047	.2539	.2516	.3765	.3760	.2500	.2491
MFI-0406-03	1/4	3/8	3/16	.560	.047	.2539	.2516	.3765	.3760	.2500	.2491
MFI-0406-04	1/4	3/8	1/4	.560	.047	.2539	.2516	.3765	.3760	.2500	.2491
MFI-0406-05	1/4	3/8	5/16	.560	.047	.2539	.2516	.3765	.3760	.2500	.2491
MFI-0406-06	1/4	3/8	3/8	.560	.047	.2539	.2516	.3765	.3760	.2500	.2491
MFI-0406-08	1/4	3/8	1/2	.560	.047	.2539	.2516	.3765	.3760	.2500	.2491
MFI-0406-10	1/4	3/8	5/8	.560	.047	.2539	.2516	.3765	.3760	.2500	.2491
MFI-0406-12	1/4	3/8	3/4	.560	.047	.2539	.2516	.3765	.3760	.2500	.2491
MFI-0506-02	5/16	3/8	1/8	.500	.032	.3164	.3141	.3765	.3760	.3125	.3116
MFI-0506-04	5/16	3/8	1/4	.500	.032	.3164	.3141	.3765	.3760	.3125	.3116
MFI-0506-06	5/16	3/8	3/8	.500	.032	.3164	.3141	.3765	.3760	.3125	.3116
MFI-0506-08	5/16	3/8	1/2	.500	.032	.3164	.3141	.3765	.3760	.3125	.3116
MFI-0506-15	5/16	3/8	15/16	.500	.032	.3164	.3141	.3765	.3760	.3125	.3116
MFI-0507-03	5/16	7/16	3/16	.560	.062	.3164	.3141	.4390	.4385	.3125	.3116
MFI-0507-04	5/16	7/16	1/4	.560	.062	.3164	.3141	.4390	.4385	.3125	.3116
MFI-0507-05	5/16	7/16	5/16	.560	.062	.3164	.3141	.4390	.4385	.3125	.3116
MFI-0507-06	5/16	7/16	3/8	.560	.062	.3164	.3141	.4390	.4385	.3125	.3116
MFI-0507-08	5/16	7/16	1/2	.560	.062	.3164	.3141	.4390	.4385	.3125	.3116
MFI-0507-10	5/16	7/16	5/8	.560	.062	.3164	.3141	.4390	.4385	.3125	.3116
MFI-0507-12	5/16	7/16	3/4	.560	.062	.3164	.3141	.4390	.4385	.3125	.3116

# iglide® Plain Bearings M250 - Flange Bearing, Inch



r = max. .0197

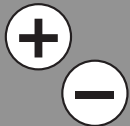


For tolerance values  
please refer to page 2.4

iglide® M250  
Flange - Inch

Part Number	d1	d2	b1	d3	b2	I.D. After Pressfit		Housing Bore		Shaft Size	
						Max.	Min.	Max.	Min.	Max.	Min.
MFI-0607-04	3/8	7/16	1/4	.5625	.032	.3789	.3766	.4390	.4385	.3750	.3741
MFI-0607-06	3/8	7/16	3/8	.5625	.032	.3789	.3766	.4390	.4385	.3750	.3741
MFI-0607-08	3/8	7/16	1/2	.5625	.032	.3789	.3766	.4390	.4385	.3750	.3741
MFI-0608-02	3/8	1/2	1/8	.625	.062	.3789	.3766	.5015	.5010	.3750	.3741
MFI-0608-03	3/8	1/2	3/16	.625	.062	.3789	.3766	.5015	.5010	.3750	.3741
MFI-0608-04	3/8	1/2	1/4	.625	.062	.3789	.3766	.5015	.5010	.3750	.3741
MFI-0608-05	3/8	1/2	5/16	.625	.062	.3789	.3766	.5015	.5010	.3750	.3741
MFI-0608-06	3/8	1/2	3/8	.625	.062	.3789	.3766	.5015	.5010	.3750	.3741
MFI-0608-08	3/8	1/2	1/2	.625	.062	.3789	.3766	.5015	.5010	.3750	.3741
MFI-0608-10	3/8	1/2	5/8	.625	.062	.3789	.3766	.5015	.5010	.3750	.3741
MFI-0608-12	3/8	1/2	3/4	.625	.062	.3789	.3766	.5015	.5010	.3750	.3741
MFI-0608-16	3/8	1/2	1	.625	.062	.3789	.3766	.5015	.5010	.3750	.3741
MFI-0608-17.5	3/8	1/2	1 3/32	.625	.062	.3789	.3766	.5015	.5010	.3750	.3741
MFI-0709-06	7/16	9/16	3/8	.687	.062	.4422	.4395	.5635	.5625	.4375	.4365
MFI-0709-08	7/16	9/16	1/2	.687	.062	.4422	.4395	.5635	.5625	.4375	.4365
MFI-0810-02	1/2	5/8	1/8	.875	.062	.5047	.5020	.6260	.6250	.5000	.4990
MFI-0810-04	1/2	5/8	1/4	.875	.062	.5047	.5020	.6260	.6250	.5000	.4990
MFI-0810-05	1/2	5/8	5/16	.875	.062	.5047	.5020	.6260	.6250	.5000	.4990
MFI-0810-06	1/2	5/8	3/8	.875	.062	.5047	.5020	.6260	.6250	.5000	.4990
MFI-0810-08	1/2	5/8	1/2	.875	.062	.5047	.5020	.6260	.6250	.5000	.4990
MFI-0810-10	1/2	5/8	5/8	.875	.062	.5047	.5020	.6260	.6250	.5000	.4990
MFI-0810-12	1/2	5/8	3/4	.875	.062	.5047	.5020	.6260	.6250	.5000	.4990
MFI-0810-16	1/2	5/8	1	.875	.062	.5047	.5020	.6260	.6250	.5000	.4990
MFI-1012-06	5/8	3/4	3/8	1.000	.062	.6297	.6270	.7510	.7500	.6250	.6240
MFI-1012-08	5/8	3/4	1/2	1.000	.062	.6297	.6270	.7510	.7500	.6250	.6240
MFI-1012-10	5/8	3/4	5/8	1.000	.062	.6297	.6270	.7510	.7500	.6250	.6240
MFI-1012-12	5/8	3/4	3/4	1.000	.062	.6297	.6270	.7510	.7500	.6250	.6240
MFI-1012-16	5/8	3/4	1	1.000	.062	.6297	.6270	.7510	.7500	.6250	.6240
MFI-1012-24	5/8	3/4	1 1/2	1.000	.062	.6297	.6270	.7510	.7500	.6250	.6240
MFI-1013-08	5/8	13/16	1/2	1.063	.156	.6297	.6270	.8135	.8125	.6250	.6240
MFI-1013-10	5/8	13/16	5/8	1.063	.156	.6297	.6270	.8135	.8125	.6250	.6240
MFI-1013-12	5/8	13/16	3/4	1.063	.156	.6297	.6270	.8135	.8125	.6250	.6240
MFI-1013-16	5/8	13/16	1	1.063	.156	.6297	.6270	.8135	.8125	.6250	.6240
MFI-1214-06	3/4	7/8	3/8	1.125	.062	.7559	.7525	.8760	.8750	.7500	.7490
MFI-1214-08	3/4	7/8	1/2	1.125	.062	.7559	.7525	.8760	.8750	.7500	.7490
MFI-1214-12	3/4	7/8	3/4	1.125	.062	.7559	.7525	.8760	.8750	.7500	.7490
MFI-1214-16	3/4	7/8	1	1.125	.062	.7559	.7525	.8760	.8750	.7500	.7490
MFI-1214-24	3/4	7/8	1 1/2	1.125	.062	.7559	.7525	.8760	.8750	.7500	.7490
MFI-1216-08	3/4	1	1/2	1.250	.156	.7559	.7525	1.0010	1.0000	.7500	.7490
MFI-1216-10	3/4	1	5/8	1.250	.156	.7559	.7525	1.0010	1.0000	.7500	.7490
MFI-1216-12	3/4	1	3/4	1.250	.156	.7559	.7525	1.0010	1.0000	.7500	.7490
MFI-1216-16	3/4	1	1	1.250	.156	.7559	.7525	1.0010	1.0000	.7500	.7490

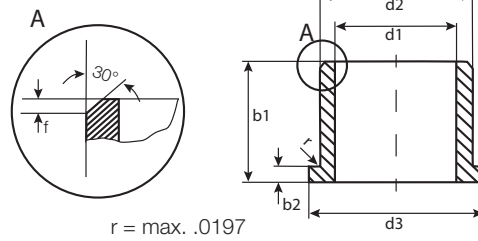
PDF: [www.igus.com/iglide-pdfs](http://www.igus.com/iglide-pdfs)  
CAD: [www.igus.com/iglide-CAD](http://www.igus.com/iglide-CAD)  
RoHS info: [www.igus.com/RoHS](http://www.igus.com/RoHS)



M250



iglide® Plain Bearings  
M250 - Flange Bearing, Inch



For tolerance values  
please refer to page 2.4

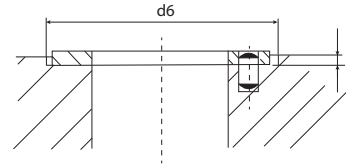
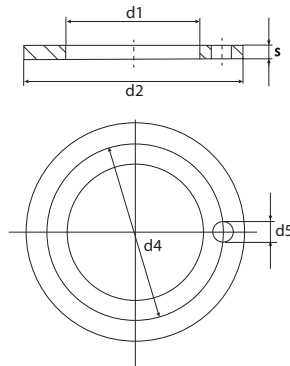
iglide® M250  
Flange - Inch

Telephone 1-800-521-2747  
Fax 1-401-438-7270

Internet: <http://www.igus.com>  
email: [sales@igus.com](mailto:sales@igus.com)  
QuickSpec: <http://www.igus.com/iglide-quickspec>

Part Number	d1	d2	b1	d3	b2	I.D. After Pressfit		Housing Bore		Shaft Size	
						Max.	Min.	Max.	Min.	Max.	Min.
MFI-1216-24	3/4	1	1 1/2	1.250	.156	.7559	.7525	1.0010	1.0000	.7500	.7490
MFI-1216-32	3/4	1	2	1.250	.156	.7559	.7525	1.0010	1.0000	.7500	.7490
MFI-1416-12	7/8	1	3/4	1.250	.062	.8809	.8775	1.0010	1.0000	.8750	.8740
MFI-1416-16	7/8	1	1	1.250	.062	.8809	.8775	1.0010	1.0000	.8750	.8740
MFI-1416-24	7/8	1	1 1/2	1.250	.062	.8809	.8775	1.0010	1.0000	.8750	.8740
MFI-1418-08	7/8	1 1/8	1/2	1.375	.156	.8809	.8775	1.1260	1.1250	.8750	.8740
MFI-1418-12	7/8	1 1/8	3/4	1.375	.156	.8809	.8775	1.1260	1.1250	.8750	.8740
MFI-1418-16	7/8	1 1/8	1	1.375	.156	.8809	.8775	1.1260	1.1250	.8750	.8740
MFI-1418-24	7/8	1 1/8	1 1/2	1.375	.156	.8809	.8775	1.1260	1.1250	.8750	.8740
MFI-1618-03	1	1 1/8	3/16	1.375	.062	1.0059	1.0025	1.1260	1.1250	1.0000	.9990
MFI-1618-12	1	1 1/8	3/4	1.375	.062	1.0059	1.0025	1.1260	1.1250	1.0000	.9990
MFI-1618-16	1	1 1/8	1	1.375	.062	1.0059	1.0025	1.1260	1.1250	1.0000	.9990
MFI-1618-24	1	1 1/8	1 1/2	1.375	.062	1.0059	1.0025	1.1260	1.1250	1.0000	.9990
MFI-1620-08	1	1 1/4	1/2	1.500	.188	1.0059	1.0025	1.2510	1.2500	1.0000	.9990
MFI-1620-10	1	1 1/4	5/8	1.500	.188	1.0059	1.0025	1.2510	1.2500	1.0000	.9990
MFI-1620-12	1	1 1/4	3/4	1.500	.188	1.0059	1.0025	1.2510	1.2500	1.0000	.9990
MFI-1620-16	1	1 1/4	1	1.500	.188	1.0059	1.0025	1.2510	1.2500	1.0000	.9990
MFI-1620-24	1	1 1/4	1 1/2	1.500	.188	1.0059	1.0025	1.2510	1.2500	1.0000	.9990
MFI-2024-07	1 1/4	1 1/2	7/16	1.750	.200	1.2600	1.2531	1.5005	1.4995	1.2500	1.2490
MFI-2024-12	1 1/4	1 1/2	3/4	1.750	.200	1.2600	1.2531	1.5005	1.4995	1.2500	1.2490
MFI-2024-16	1 1/4	1 1/2	1	1.750	.200	1.2600	1.2531	1.5005	1.4995	1.2500	1.2490
MFI-2024-24	1 1/4	1 1/2	1 1/2	1.750	.200	1.2600	1.2531	1.5005	1.4995	1.2500	1.2490
MFI-2226-12	1 3/8	1 5/8	3/4	1.875	.125	1.3781	1.3759	1.6255	1.6245	1.3750	1.3740
MFI-2226-16	1 3/8	1 5/8	1	1.875	.125	1.3781	1.3759	1.6255	1.6245	1.3750	1.3740
MFI-2428-12	1 1/2	1 3/4	3/4	2.000	.125	1.5100	1.5032	1.7505	1.7495	1.5000	1.4990
MFI-2428-16	1 1/2	1 3/4	1	2.000	.125	1.5100	1.5032	1.7505	1.7495	1.5000	1.4990
MFI-2428-24	1 1/2	1 3/4	1 1/2	2.000	.125	1.5100	1.5032	1.7505	1.7495	1.5000	1.4990
MFI-2630-16	1 5/8	1 7/8	1	2.125	.125	1.6350	1.6282	1.8755	1.8745	1.6250	1.6240
MFI-2832-12	1 3/4	2	3/4	2.250	.125	1.7595	1.7531	2.0005	1.9995	1.7500	1.7490
MFI-2832-16	1 3/4	2	1	2.250	.125	1.7595	1.7531	2.0005	1.9995	1.7500	1.7490
MFI-2832-24	1 3/4	2	1 1/2	2.250	.125	1.7595	1.7531	2.0005	1.9995	1.7500	1.7490
MFI-3236-16	2	2 1/4	1	2.500	.125	2.0100	2.0032	2.2500	2.2512	2.0000	1.9990
MFI-3236-24	2	2 1/4	1 1/2	2.500	.125	2.0100	2.0032	2.2500	2.2512	2.0000	1.9990
MFI-3236-32	2	2 1/4	2	2.500	.125	2.0100	2.0032	2.2500	2.2512	2.0000	1.9990

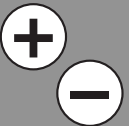
iglide® Plain Bearings  
M250 - Thrust Washer, Inch



Part Number	d1(nominal)	d1		d2		s
		Max.	Min.	Max.	Min.	
MTI-04	1/4	.2609	.2550	.6200	.6094	.0900
MTI-05	5/16	.3271	.3189	.6874	.6767	.0900
MTI-06	3/8	.3850	.3780	.7409	.7394	.0900
MTI-08	1/2	.5101	.5030	.8200	.8070	.0900
MTI-10	5/8	.6371	.6300	1.0000	.9870	.0940
MTI-12	3/4	.7675	.7600	1.0630	1.0500	.0940
MTI-16	1	1.0200	1.0100	1.5000	1.4843	.1250
MTI-20	1 1/4	1.2998	1.2900	2.1400	2.1220	.0980
MTI-24	1 1/2	1.6000	1.5500	2.6000	2.5500	.1250

iglide® M250  
Thrust Washer - Inch

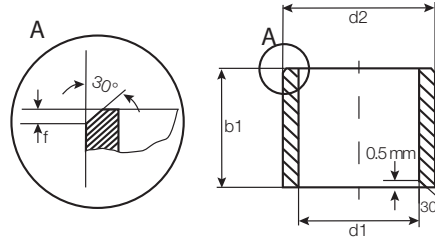
PDF: [www.igus.com/iglide-pdfs](http://www.igus.com/iglide-pdfs)  
CAD: [www.igus.com/iglide-CAD](http://www.igus.com/iglide-CAD)  
RoHS info: [www.igus.com/RoHS](http://www.igus.com/RoHS)



M250



# iglide® Plain Bearings M250 - Sleeve Bearing - MM



For tolerance values please refer to page 2.4

Dimensions according to ISO 3547-1 and special dimensions

Part Number	d1		d2	b1	I.D. After Pressfit		Housing Bore		Shaft Size	
	After Pressfit in Ø H7				h13	Max.	Min.	Max.	Min.	Max.
MSM-0103-02	1.0	+0.020 +0.080	3.0	2.0	1.080	1.020	3.080	3.000	1.000	.975
MSM-0104-02	1.5	+0.020 +0.080	4.0	2.0	1.580	1.520	4.012	4.000	1.500	1.475
MSM-0205-01	2.0	+0.020 +0.080	5.0	1.0	2.080	2.020	5.012	5.000	2.000	1.975
MSM-0205-02	2.0	+0.020 +0.080	5.0	2.0	2.080	2.020	5.012	5.000	2.000	1.975
MSM-0205-03	2.0	+0.020 +0.080	5.0	3.0	2.080	2.020	5.012	5.000	2.000	1.975
MSM-0206-03	2.5	+0.020 +0.080	6.0	3.0	2.580	2.520	6.012	6.000	2.500	2.475
MSM-0305-03	3.0	+0.020 +0.080	5.0	3.0	3.080	3.020	5.012	5.000	3.000	2.975
MSM-0305-04	3.0	+0.020 +0.080	5.0	4.0	3.080	3.020	5.012	5.000	3.000	2.975
MSM-0306-03	3.0	+0.020 +0.080	6.0	3.0	3.080	3.020	6.012	6.000	3.000	2.975
MSM-0306-04	3.0	+0.020 +0.080	6.0	4.0	3.080	3.020	6.012	6.000	3.000	2.975
MSM-0407-03	4.0	+0.030 +0.105	7.0	3.0	4.105	4.030	7.015	7.000	4.000	3.970
MSM-0407-04	4.0	+0.030 +0.105	7.0	4.0	4.105	4.030	7.015	7.000	4.000	3.970
MSM-0407-06	4.0	+0.030 +0.105	7.0	6.0	4.105	4.030	7.015	7.000	4.000	3.970
MSM-0408-04	4.0	+0.030 +0.105	8.0	4.0	4.105	4.030	8.015	8.000	4.000	3.970
MSM-0408-06	4.0	+0.030 +0.105	8.0	6.0	4.105	4.030	8.015	8.000	4.000	3.970
MSM-0508-04	5.0	+0.030 +0.105	8.0	4.0	5.105	5.030	8.015	8.000	5.000	4.970
MSM-0508-05	5.0	+0.030 +0.105	8.0	5.0	5.105	5.030	8.015	8.000	5.000	4.970
MSM-0508-08	5.0	+0.030 +0.105	8.0	8.0	5.105	5.030	8.015	8.000	5.000	4.970
MSM-0509-05	5.0	+0.030 +0.105	9.0	5.0	5.105	5.030	9.015	9.000	5.000	4.970
MSM-0509-08	5.0	+0.030 +0.105	9.0	8.0	5.105	5.030	9.015	9.000	5.000	4.970
MSM-0608-10	6.0	+0.030 +0.105	8.0	10.0	6.105	6.030	8.015	8.000	6.000	5.970
MSM-0609-06	6.0	+0.030 +0.105	9.0	6.0	6.105	6.030	9.015	9.000	6.000	5.970
MSM-0610-02	6.0	+0.030 +0.105	10.0	2.0	6.105	6.030	10.015	10.000	6.000	5.970
MSM-0610-04	6.0	+0.030 +0.105	10.0	4.0	6.105	6.030	10.015	10.000	6.000	5.970
MSM-0610-06	6.0	+0.030 +0.105	10.0	6.0	6.105	6.030	10.015	10.000	6.000	5.970
MSM-0610-08	6.0	+0.030 +0.105	10.0	8.0	6.105	6.030	10.015	10.000	6.000	5.970
MSM-0610-10	6.0	+0.030 +0.105	10.0	10.0	6.105	6.030	10.015	10.000	6.000	5.970
MSM-0611-04	6.0	+0.030 +0.105	11.0	4.0	6.105	6.030	11.018	11.000	6.000	5.970
MSM-0612-06	6.0	+0.030 +0.105	12.0	6.0	6.105	6.030	12.018	12.000	6.000	5.970
MSM-0612-10	6.0	+0.030 +0.105	12.0	10.0	6.105	6.030	12.018	12.000	6.000	5.970
MSM-0710-05	7.0	+0.040 +0.130	10.0	5.0	7.130	7.040	10.015	10.000	7.000	6.964
MSM-0710-08	7.0	+0.040 +0.130	10.0	8.0	7.130	7.040	10.015	10.000	7.000	6.964
MSM-0710-10	7.0	+0.040 +0.130	10.0	10.0	7.130	7.040	10.015	10.000	7.000	6.964
MSM-0711-16	7.0	+0.040 +0.130	11.0	16.0	7.130	7.040	11.018	11.000	7.000	6.964
MSM-0810-06	8.0	+0.040 +0.130	10.0	6.0	8.130	8.040	10.015	10.000	8.000	7.964
MSM-0810-08	8.0	+0.040 +0.130	10.0	8.0	8.130	8.040	10.015	10.000	8.000	7.964
MSM-0810-10	8.0	+0.040 +0.130	10.0	10.0	8.130	8.040	10.015	10.000	8.000	7.964
MSM-0811-06	8.0	+0.040 +0.130	11.0	6.0	8.130	8.040	11.018	11.000	8.000	7.964
MSM-0811-08	8.0	+0.040 +0.130	11.0	8.0	8.130	8.040	11.018	11.000	8.000	7.964
MSM-0811-12	8.0	+0.040 +0.130	11.0	12.0	8.130	8.040	11.018	11.000	8.000	7.964
MSM-0812-04	8.0	+0.040 +0.130	12.0	4.0	8.130	8.040	12.018	12.000	8.000	7.964
MSM-0812-06	8.0	+0.040 +0.130	12.0	6.0	8.130	8.040	12.018	12.000	8.000	7.964

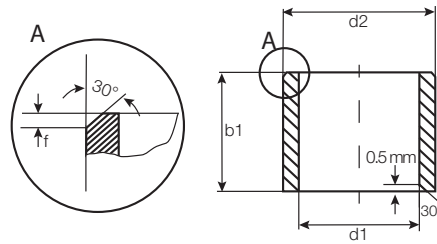
iglide® M250  
Sleeve - MM

Telephone 1-800-521-2747  
Fax 1-401-438-7270

Internet: <http://www.igus.com>  
email: [sales@igus.com](mailto:sales@igus.com)  
QuickSpec: <http://www.igus.com/iglide-quickspec>

# iglide® Plain Bearings

## M250 - Sleeve Bearing - MM



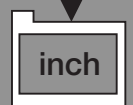
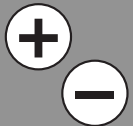
For tolerance values  
please refer to page 2.4

Dimensions according to ISO 3547-1 and special dimensions

Part Number	d1		d2	b1	I.D. After Pressfit		Housing Bore		Shaft Size	
	After Pressfit in Ø H7				h13	Max.	Min.	Max.	Min.	Max.
MSM-0812-08	8.0	+0.040 +0.130	12.0	8.0	8.130	8.040	12.018	12.000	8.000	7.964
MSM-0812-10	8.0	+0.040 +0.130	12.0	10.0	8.130	8.040	12.018	12.000	8.000	7.964
MSM-0812-12	8.0	+0.040 +0.130	12.0	12.0	8.130	8.040	12.018	12.000	8.000	7.964
MSM-0814-06	8.0	+0.040 +0.130	14.0	6.0	8.130	8.040	14.018	14.000	8.000	7.964
MSM-0814-10	8.0	+0.040 +0.130	14.0	10.0	8.130	8.040	14.018	14.000	8.000	7.964
MSM-0912-14	9.0	+0.040 +0.130	12.0	14.0	9.130	9.040	12.018	12.000	9.000	8.964
MSM-1014-06	10.0	+0.040 +0.130	14.0	6.0	10.130	10.040	14.018	14.000	10.000	9.964
MSM-1014-08	10.0	+0.040 +0.130	14.0	8.0	10.130	10.040	14.018	14.000	10.000	9.964
MSM-1014-10	10.0	+0.040 +0.130	14.0	10.0	10.130	10.040	14.018	14.000	10.000	9.964
MSM-1014-16	10.0	+0.040 +0.130	14.0	16.0	10.130	10.040	14.018	14.000	10.000	9.964
MSM-1016-06	10.0	+0.040 +0.130	16.0	6.0	10.130	10.040	16.018	16.000	10.000	9.964
MSM-1016-08	10.0	+0.040 +0.130	16.0	8.0	10.130	10.040	16.018	16.000	10.000	9.964
MSM-1016-10	10.0	+0.040 +0.130	16.0	10.0	10.130	10.040	16.018	16.000	10.000	9.964
MSM-1016-16	10.0	+0.040 +0.130	16.0	16.0	10.130	10.040	16.018	16.000	10.000	9.964
MSM-1016-50	10.0	+0.040 +0.130	16.0	50.0	10.130	10.040	16.018	16.000	10.000	9.964
MSM-1214-15	12.0	+0.050 +0.160	14.0	15.0	12.160	12.050	14.018	14.000	12.000	11.957
MSM-1214-20	12.0	+0.050 +0.160	14.0	20.0	12.160	12.050	14.018	14.000	12.000	11.957
MSM-1216-15	12.0	+0.050 +0.160	16.0	15.0	12.160	12.050	16.018	16.000	12.000	11.957
MSM-1216-20	12.0	+0.050 +0.160	16.0	20.0	12.160	12.050	16.018	16.000	12.000	11.957
MSM-1218-08	12.0	+0.050 +0.160	18.0	8.0	12.160	12.050	18.018	18.000	12.000	11.957
MSM-1218-10	12.0	+0.050 +0.160	18.0	10.0	12.160	12.050	18.018	18.000	12.000	11.957
MSM-1218-15	12.0	+0.050 +0.160	18.0	15.0	12.160	12.050	18.018	18.000	12.000	11.957
MSM-1218-20	12.0	+0.050 +0.160	18.0	20.0	12.160	12.050	18.018	18.000	12.000	11.957
MSM-1416-085	14.0	+0.050 +0.160	16.0	8.5	14.160	14.050	16.018	16.000	14.000	13.957
MSM-1416-10	14.0	+0.050 +0.160	16.0	10.0	14.160	14.050	16.018	16.000	14.000	13.957
MSM-1416-15	14.0	+0.050 +0.160	16.0	15.0	14.160	14.050	16.018	16.000	14.000	13.957
MSM-1416-20	14.0	+0.050 +0.160	16.0	20.0	14.160	14.050	16.018	16.000	14.000	13.957
MSM-1416-29	14.0	+0.050 +0.160	16.0	29.0	14.160	14.050	16.018	16.000	14.000	13.957
MSM-1418-20	14.0	+0.050 +0.160	18.0	20.0	14.160	14.050	18.018	18.000	14.000	13.957
MSM-1420-10	14.0	+0.050 +0.160	20.0	10.0	14.160	14.050	20.021	20.000	14.000	13.957
MSM-1420-15	14.0	+0.050 +0.160	20.0	15.0	14.160	14.050	20.021	20.000	14.000	13.957
MSM-1420-20	14.0	+0.050 +0.160	20.0	20.0	14.160	14.050	20.021	20.000	14.000	13.957
MSM-1517-10	15.0	+0.050 +0.160	17.0	10.0	15.160	15.050	17.018	17.000	15.000	14.957
MSM-1517-15	15.0	+0.050 +0.160	17.0	15.0	15.160	15.050	17.018	17.000	15.000	14.957
MSM-1521-10	15.0	+0.050 +0.160	21.0	10.0	15.160	15.050	21.021	21.000	15.000	14.957
MSM-1521-15	15.0	+0.050 +0.160	21.0	15.0	15.160	15.050	21.021	21.000	15.000	14.957
MSM-1521-20	15.0	+0.050 +0.160	21.0	20.0	15.160	15.050	21.021	21.000	15.000	14.957
MSM-1521-23	15.0	+0.050 +0.160	21.0	23.0	15.160	15.050	21.021	21.000	15.000	14.957
MSM-1618-12	16.0	+0.050 +0.160	18.0	12.0	16.160	16.050	18.018	18.000	16.000	15.957
MSM-1618-20	16.0	+0.050 +0.160	18.0	20.0	16.160	16.050	18.018	18.000	16.000	15.957
MSM-1620-20	16.0	+0.050 +0.160	20.0	20.0	16.160	16.050	20.021	20.000	16.000	15.957
MSM-1620-25	16.0	+0.050 +0.160	20.0	25.0	16.160	16.050	20.021	20.000	16.000	15.957

iglide® M250  
Sleeve - MM

PDF: [www.igus.com/iglide-pdfs](http://www.igus.com/iglide-pdfs)  
CAD: [www.igus.com/iglide-CAD](http://www.igus.com/iglide-CAD)  
RoHS info: [www.igus.com/RoHS](http://www.igus.com/RoHS)

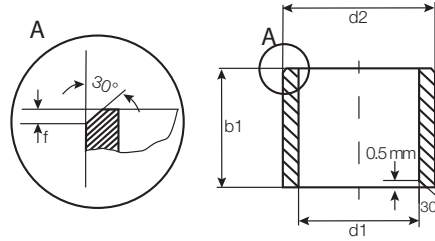


M250



# iglide® Plain Bearings M250 - Sleeve Bearing - MM

iglide® M250  
Sleeve - MM



For tolerance values  
please refer to page 2.4

Dimensions according to ISO 3547-1 and special dimensions

Part Number	d1		d2	b1	I.D. After Pressfit		Housing Bore		Shaft Size	
	After Pressfit in Ø H7				Max.	Min.	Max.	Min.	Max.	Min.
MSM-1620-30	16.0	+0.050 +0.160	20.0	30.0	16.160	16.050	20.021	20.000	16.000	15.957
MSM-1622-12	16.0	+0.050 +0.160	22.0	12.0	16.160	16.050	22.021	22.000	16.000	15.957
MSM-1622-15	16.0	+0.050 +0.160	22.0	15.0	16.160	16.050	22.021	22.000	16.000	15.957
MSM-1622-16	16.0	+0.050 +0.160	22.0	16.0	16.160	16.050	22.021	22.000	16.000	15.957
MSM-1622-20	16.0	+0.050 +0.160	22.0	20.0	16.160	16.050	22.021	22.000	16.000	15.957
MSM-1622-25	16.0	+0.050 +0.160	22.0	25.0	16.160	16.050	22.021	22.000	16.000	15.957
MSM-1824-12	18.0	+0.050 +0.160	24.0	12.0	18.160	18.050	24.021	24.000	18.000	17.957
MSM-1824-20	18.0	+0.050 +0.160	24.0	20.0	18.160	18.050	24.021	24.000	18.000	17.957
MSM-1824-30	18.0	+0.050 +0.160	24.0	30.0	18.160	18.050	24.021	24.000	18.000	17.957
MSM-2023-15	20.0	+0.065 +0.195	23.0	15.0	20.195	20.065	23.021	23.000	20.000	19.948
MSM-2023-20	20.0	+0.065 +0.195	23.0	20.0	20.195	20.065	23.021	23.000	20.000	19.948
MSM-2025-14	20.0	+0.065 +0.195	25.0	14.0	20.195	20.065	25.021	25.000	20.000	19.948
MSM-2025-20	20.0	+0.065 +0.195	25.0	20.0	20.195	20.065	25.021	25.000	20.000	19.948
MSM-2025-30	20.0	+0.065 +0.195	25.0	30.0	20.195	20.065	25.021	25.000	20.000	19.948
MSM-2026-12	20.0	+0.065 +0.195	26.0	12.0	20.195	20.065	26.021	26.000	20.000	19.948
MSM-2026-15	20.0	+0.065 +0.195	26.0	15.0	20.195	20.065	26.021	26.000	20.000	19.948
MSM-2026-20	20.0	+0.065 +0.195	26.0	20.0	20.195	20.065	26.021	26.000	20.000	19.948
MSM-2026-30	20.0	+0.065 +0.195	26.0	30.0	20.195	20.065	26.021	26.000	20.000	19.948
MSM-2226-15	22.0	+0.065 +0.195	26.0	15.0	22.195	22.065	26.021	26.000	22.000	21.948
MSM-2228-10	22.0	+0.065 +0.195	28.0	10.0	22.195	22.065	28.021	28.000	22.000	21.948
MSM-2228-15	22.0	+0.065 +0.195	28.0	15.0	22.195	22.065	28.021	28.000	22.000	21.948
MSM-2228-20	22.0	+0.065 +0.195	28.0	20.0	22.195	22.065	28.021	28.000	22.000	21.948
MSM-2228-30	22.0	+0.065 +0.195	28.0	30.0	22.195	22.065	28.021	28.000	22.000	21.948
MSM-2430-15	24.0	+0.065 +0.195	30.0	15.0	24.195	24.065	30.025	30.000	24.000	23.948
MSM-2430-20	24.0	+0.065 +0.195	30.0	20.0	24.195	24.065	30.025	30.000	24.000	23.948
MSM-2430-30	24.0	+0.065 +0.195	30.0	30.0	24.195	24.065	30.025	30.000	24.000	23.948
MSM-2528-12	25.0	+0.065 +0.195	28.0	12.0	25.195	25.065	28.021	28.000	25.000	24.948
MSM-2528-20	25.0	+0.065 +0.195	28.0	20.0	25.195	25.065	28.021	28.000	25.000	24.948
MSM-2530-20	25.0	+0.065 +0.195	30.0	20.0	25.195	25.065	30.025	30.000	25.000	24.948
MSM-2530-30	25.0	+0.065 +0.195	30.0	30.0	25.195	25.065	30.025	30.000	25.000	24.948
MSM-2530-40	25.0	+0.065 +0.195	30.0	40.0	25.195	25.065	30.025	30.000	25.000	24.948
MSM-2532-12	25.0	+0.065 +0.195	32.0	12.0	25.195	25.065	32.025	32.000	25.000	24.948
MSM-2532-20	25.0	+0.065 +0.195	32.0	20.0	25.195	25.065	32.025	32.000	25.000	24.948
MSM-2532-30	25.0	+0.065 +0.195	32.0	30.0	25.195	25.065	32.025	32.000	25.000	24.948
MSM-2532-35	25.0	+0.065 +0.195	32.0	35.0	25.195	25.065	32.025	32.000	25.000	24.948
MSM-2532-40	25.0	+0.065 +0.195	32.0	40.0	25.195	25.065	32.025	32.000	25.000	24.948
MSM-2630-20	26.0	+0.065 +0.195	30.0	20.0	26.195	26.065	30.025	30.000	26.000	25.948
MSM-2632-30	26.0	+0.065 +0.195	32.0	30.0	26.195	26.065	32.025	32.000	26.000	25.948
MSM-2734-20	27.0	+0.065 +0.195	34.0	20.0	27.195	27.065	34.025	34.000	27.000	26.948
MSM-2734-30	27.0	+0.065 +0.195	34.0	30.0	27.195	27.065	34.025	34.000	27.000	26.948

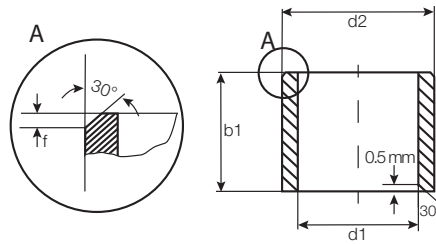
Telephone 1-800-521-2747  
Fax 1-401-438-7270

Internet: <http://www.igus.com>  
email: [sales@igus.com](mailto:sales@igus.com)  
QuickSpec: <http://www.igus.com/iglide-quickspec>

# iglide® Plain Bearings M250 - Sleeve Bearing - MM



M250



For tolerance values  
please refer to page 2.4

Dimensions according to ISO 3547-1 and special dimensions

Part Number	d1		d2	b1	I.D. After Pressfit		Housing Bore		Shaft Size	
	After Pressfit	Tolerance in Ø H7			Max.	Min.	Max.	Min.	Max.	Min.
MSM-2734-40	27.0	+0.065 +0.195	34.0	40.0	27.195	27.065	34.025	34.000	27.000	26.948
MSM-2833-20	28.0	+0.065 +0.195	33.0	20.0	28.195	28.065	33.025	33.000	28.000	27.948
MSM-2836-20	28.0	+0.065 +0.195	36.0	20.0	28.195	28.065	36.025	36.000	28.000	27.948
MSM-2836-30	28.0	+0.065 +0.195	36.0	30.0	28.195	28.065	36.025	36.000	28.000	27.948
MSM-2836-40	28.0	+0.065 +0.195	36.0	40.0	28.195	28.065	36.025	36.000	28.000	27.948
MSM-3035-20	30.0	+0.065 +0.195	35.0	20.0	30.195	30.065	35.025	35.000	30.000	29.948
MSM-3035-40	30.0	+0.065 +0.195	35.0	40.0	30.195	30.065	35.025	35.000	30.000	29.948
MSM-3038-20	30.0	+0.065 +0.195	38.0	20.0	30.195	30.065	38.025	38.000	30.000	29.948
MSM-3038-30	30.0	+0.065 +0.195	38.0	30.0	30.195	30.065	38.025	38.000	30.000	29.948
MSM-3038-40	30.0	+0.065 +0.195	38.0	40.0	30.195	30.065	38.025	38.000	30.000	29.948
MSM-3040-40	30.0	+0.065 +0.195	40.0	40.0	30.195	30.065	40.025	40.000	30.000	29.948
MSM-3240-20	32.0	+0.080 +0.240	40.0	20.0	32.240	32.080	40.025	40.000	32.000	31.948
MSM-3240-30	32.0	+0.080 +0.240	40.0	30.0	32.240	32.080	40.025	40.000	32.000	31.948
MSM-3240-40	32.0	+0.080 +0.240	40.0	40.0	32.240	32.080	40.025	40.000	32.000	31.948
MSM-3542-50	35.0	+0.080 +0.240	42.0	50.0	35.240	35.080	42.025	42.000	35.000	34.948
MSM-7580-60	75.0	+0.100 +0.290	80.0	60.0	75.290	75.100	80.025	80.000	75.000	74.948

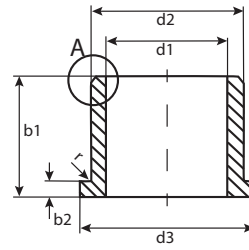
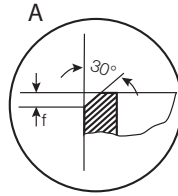
iglide® M250  
Sleeve - MM

PDF: [www.igus.com/iglide-pdfs](http://www.igus.com/iglide-pdfs)  
CAD: [www.igus.com/iglide-CAD](http://www.igus.com/iglide-CAD)  
RoHS info: [www.igus.com/RoHS](http://www.igus.com/RoHS)

M250



# iglide® Plain Bearings M250 - Flange Bearing, MM



For tolerance values  
please refer to page 2.4

r = max. 0.5

Dimensions according to ISO 3547-1 and special dimensions

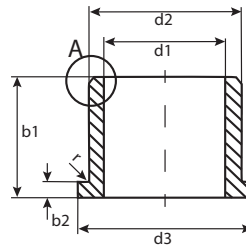
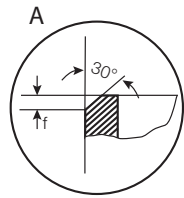
Part Number	d1 <sup>1)</sup>		d2	d3	b1	b2	I.D. After Pressfit		Housing Bore		Shaft Size	
	After Pressfit in Ø H7						Max.	Min.	Max.	Min.	Max.	Min.
MFM-0103-02	1.0	+0.020 +0.080	3.0	5.0	2.0	1.00	1.080	1.020	3.080	3.000	1.000	.975
MFM-0104-02	1.5	+0.020 +0.080	4.0	6.0	2.0	1.00	1.580	1.520	4.012	4.000	1.500	1.475
MFM-0205-03	2.0	+0.020 +0.080	5.0	8.0	3.0	1.50	2.080	2.020	5.012	5.000	2.000	1.975
MFM-0206-03	2.5	+0.020 +0.080	6.0	9.0	3.0	1.50	2.580	2.520	6.012	6.000	2.500	2.475
MFM-0306-04	3.0	+0.020 +0.080	6.0	9.0	4.0	1.50	3.080	3.020	6.012	6.000	3.000	2.975
MFM-0408-04	4.0	+0.030 +0.105	8.0	12.0	4.0	2.0	4.105	4.030	8.015	8.000	4.000	3.970
MFM-0408-06	4.0	+0.030 +0.105	8.0	12.0	6.0	2.0	4.105	4.030	8.015	8.000	4.000	3.970
MFM-0408-08	4.0	+0.030 +0.105	8.0	12.0	8.0	2.0	4.105	4.030	8.015	8.000	4.000	3.970
MFM-0509-05	5.0	+0.030 +0.105	9.0	13.0	5.0	2.0	5.105	5.030	9.015	9.000	5.000	4.970
MFM-0509-06	5.0	+0.030 +0.105	9.0	13.0	6.0	2.0	5.105	5.030	9.015	9.000	5.000	4.970
MFM-0509-08	5.0	+0.030 +0.105	9.0	13.0	8.0	2.0	5.105	5.030	9.015	9.000	5.000	4.970
MFM-0610-04	6.0	+0.030 +0.105	10.0	14.0	4.0	2.0	6.105	6.030	10.015	10.000	6.000	5.970
MFM-0610-06	6.0	+0.030 +0.105	10.0	14.0	6.0	2.0	6.105	6.030	10.015	10.000	6.000	5.970
MFM-0610-10	6.0	+0.030 +0.105	10.0	14.0	10.0	2.0	6.105	6.030	10.015	10.000	6.000	5.970
MFM-0611-04	6.0	+0.030 +0.105	11.0	4.0	4.0	2.5	6.105	6.030	11.018	11.000	6.000	5.970
MFM-0612-06	6.0	+0.030 +0.105	12.0	14.0	6.0	3.0	6.105	6.030	12.018	12.000	6.000	5.970
MFM-0612-10	6.0	+0.030 +0.105	12.0	14.0	10.0	3.0	6.105	6.030	12.018	12.000	6.000	5.970
MFM-0711-08	7.0	+0.040 +0.130	11.0	15.0	8.0	2.0	7.130	7.040	11.018	11.000	7.000	6.964
MFM-0811-05	8.0	+0.040 +0.130	11.0	13.0	5.0	2.0	8.130	8.040	11.018	11.000	8.000	7.964
MFM-0811-08	8.0	+0.040 +0.130	11.0	13.0	8.0	2.0	8.130	8.040	11.018	11.000	8.000	7.964
MFM-0812-06	8.0	+0.040 +0.130	12.0	16.0	6.0	2.0	8.130	8.040	12.018	12.000	8.000	7.964
MFM-0812-08	8.0	+0.040 +0.130	12.0	16.0	8.0	2.0	8.130	8.040	12.018	12.000	8.000	7.964
MFM-0812-12	8.0	+0.040 +0.130	12.0	16.0	12.0	2.0	8.130	8.040	12.018	12.000	8.000	7.964
MFM-0814-06	8.0	+0.040 +0.130	14.0	18.0	6.0	3.0	8.130	8.040	14.018	14.000	8.000	7.964
MFM-0814-10	8.0	+0.040 +0.130	14.0	18.0	10.0	3.0	8.130	8.040	14.018	14.000	8.000	7.964
MFM-081416-06	8.0	+0.040 +0.130	14.0	16.0	6.0	3.0	8.130	8.040	14.018	14.000	8.000	7.964
MFM-081416-10	8.0	+0.040 +0.130	14.0	16.0	10.0	3.0	8.130	8.040	14.018	14.000	8.000	7.984
MFM-0914-06	9.0	+0.040 +0.130	14.0	19.0	6.0	2.0	9.130	9.040	14.018	14.000	9.000	8.964
MFM-0914-10	9.0	+0.040 +0.130	14.0	19.0	10.0	2.0	9.130	9.040	14.018	14.000	9.000	8.964
MFM-0914-14	9.0	+0.040 +0.130	14.0	19.0	14.0	2.0	9.130	9.040	14.018	14.000	9.000	8.964
MFM-1014-10	10.0	+0.040 +0.130	14.0	19.0	10.0	2.0	10.130	10.040	14.018	14.000	10.000	9.964
MFM-1014-14	10.0	+0.040 +0.130	14.0	17.5	14.0	1.0	10.130	10.040	14.018	14.000	10.000	9.964
MFM-1014-19	10.0	+0.040 +0.130	14.0	17.5	19.0	1.0	10.130	10.040	14.018	14.000	10.000	9.964
MFM-1014-24	10.0	+0.040 +0.130	14.0	17.5	24.0	1.0	10.130	10.040	14.018	14.000	10.000	9.964
MFM-1014-34	10.0	+0.040 +0.130	14.0	17.5	34.0	1.0	10.130	10.040	14.018	14.000	10.000	9.964
MFM-101420-12	10.0	+0.040 +0.130	14.0	20.0	12.0	2.0	10.130	10.040	14.018	14.000	10.000	9.964
MFM-1016-08	10.0	+0.040 +0.130	16.0	22.0	8.0	3.0	10.130	10.040	16.018	16.000	10.000	9.964
MFM-1016-10	10.0	+0.040 +0.130	16.0	22.0	10.0	3.0	10.130	10.040	16.018	16.000	10.000	9.964
MFM-1016-16	10.0	+0.040 +0.130	16.0	22.0	16.0	3.0	10.130	10.040	16.018	16.000	10.000	9.964
MFM-101620-06	10.0	+0.040 +0.130	16.0	20.0	6.0	3.0	10.130	10.040	16.018	16.000	10.000	9.964
MFM-101620-10	10.0	+0.040 +0.130	16.0	20.0	10.0	3.0	10.130	10.040	16.018	16.000	10.000	9.964
MFM-1216-10	12.0	+0.050 +0.160	16.0	22.0	10.0	2.0	12.160	12.050	16.018	16.000	12.000	11.957

iglide® M250  
Flange - MM

Telephone 1-800-521-2747  
Fax 1-401-438-7270

Internet: <http://www.igus.com>  
email: [sales@igus.com](mailto:sales@igus.com)  
QuickSpec: <http://www.igus.com/iglide-quickspec>

# iglide® Plain Bearings M250 - Flange Bearing, MM



For tolerance values  
please refer to page 2.4

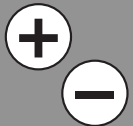
$r = \max. 0.5$

Dimensions according to ISO 3547-1 and special dimensions

Part Number	d1 <sup>1)</sup> After Pressfit in Ø H7	d1-Tolerance +0.050 +0.160	d2	d3 d13	b1 h13	b2 -0.14	I.D. After Pressfit		Housing Bore		Shaft Size	
							Max.	Min.	Max.	Min.	Max.	Min.
MFM-1216-20	12.0	+0.050 +0.160	16.0	22.0	20.0	2.0	12.160	12.050	16.018	16.000	12.000	11.957
MFM-1218-08	12.0	+0.050 +0.160	18.0	24.0	8.0	3.0	12.160	12.050	18.018	18.000	12.000	11.957
MFM-1218-10	12.0	+0.050 +0.160	18.0	22.0	10.0	3.0	12.160	12.050	18.018	18.000	12.000	11.957
MFM-1218-12	12.0	+0.050 +0.160	18.0	24.0	12.0	3.0	12.160	12.050	18.018	18.000	12.000	11.957
MFM-1218-15	12.0	+0.050 +0.160	18.0	22.0	15.0	3.0	12.160	12.050	18.018	18.000	12.000	11.957
MFM-1218-20	12.0	+0.050 +0.160	18.0	22.0	20.0	3.0	12.160	12.050	18.018	18.000	12.000	11.957
MFM-1420-07	14.0	+0.050 +0.160	20.0	25.0	7.0	3.0	14.160	14.050	20.021	20.000	14.000	13.957
MFM-1420-10	14.0	+0.050 +0.160	20.0	25.0	10.0	3.0	14.160	14.050	20.021	20.000	14.000	13.957
MFM-1420-15	14.0	+0.050 +0.160	20.0	25.0	15.0	3.0	14.160	14.050	20.021	20.000	14.000	13.957
MFM-1420-20	14.0	+0.050 +0.160	20.0	25.0	20.0	3.0	14.160	14.050	20.021	20.000	14.000	13.957
MFM-1521-10	15.0	+0.050 +0.160	21.0	27.0	10.0	3.0	15.160	15.050	21.021	21.000	15.000	14.957
MFM-1521-15	15.0	+0.050 +0.160	21.0	27.0	15.0	3.0	15.160	15.050	21.021	21.000	15.000	14.957
MFM-1521-20	15.0	+0.050 +0.160	21.0	27.0	20.0	3.0	15.160	15.050	21.021	21.000	15.000	14.957
MFM-1521-25	15.0	+0.050 +0.160	21.0	27.0	25.0	3.0	15.160	15.050	21.021	21.000	15.000	14.957
MFM-1618-12	16.0	+0.050 +0.160	18.0	24.0	12.0	1.0	16.160	16.050	18.021	18.000	16.000	15.957
MFM-1622-12	16.0	+0.050 +0.160	22.0	28.0	12.0	3.0	16.160	16.050	22.021	22.000	16.000	15.957
MFM-1622-15	16.0	+0.050 +0.160	22.0	28.0	15.0	3.0	16.160	16.050	22.021	22.000	16.000	15.957
MFM-1622-20	16.0	+0.050 +0.160	22.0	28.0	20.0	3.0	16.160	16.050	22.021	22.000	16.000	15.957
MFM-1622-25	16.0	+0.050 +0.160	22.0	28.0	25.0	3.0	16.160	16.050	22.021	22.000	16.000	15.957
MFM-1824-08	18.0	+0.050 +0.160	24.0	30.0	8.0	3.0	18.160	18.050	24.021	24.000	18.000	17.957
MFM-1824-12	18.0	+0.050 +0.160	24.0	30.0	12.0	3.0	18.160	18.050	24.021	24.000	18.000	17.957
MFM-1824-18	18.0	+0.050 +0.160	24.0	30.0	18.0	3.0	18.160	18.050	24.021	24.000	18.000	17.957
MFM-1824-20	18.0	+0.050 +0.160	24.0	30.0	20.0	3.0	18.160	18.050	24.021	24.000	18.000	17.957
MFM-1824-30	18.0	+0.050 +0.160	24.0	30.0	30.0	3.0	18.160	18.050	24.021	24.000	18.000	17.957
MFM-202628-12	20.0	+0.060 +0.195	26.0	28.0	12.0	3.0	20.195	20.065	26.021	26.000	20.000	19.948
MFM-2026-15	20.0	+0.060 +0.195	26.0	32.0	15.0	3.0	20.195	20.065	26.021	26.000	20.000	19.948
MFM-2026-20	20.0	+0.060 +0.195	26.0	32.0	20.0	3.0	20.195	20.065	26.021	26.000	20.000	19.948
MFM-2026-30	20.0	+0.060 +0.195	26.0	32.0	30.0	3.0	20.195	20.065	26.021	26.000	20.000	19.948
MFM-2228-15	22.0	+0.060 +0.195	28.0	34.0	15.0	3.0	22.195	22.065	28.021	28.000	22.000	21.948
MFM-2228-20	22.0	+0.060 +0.195	28.0	34.0	20.0	3.0	22.195	22.065	28.021	28.000	22.000	21.948
MFM-2228-30	22.0	+0.060 +0.195	28.0	34.0	30.0	3.0	22.195	22.065	28.021	28.000	22.000	21.948
MFM-2430-15	24.0	+0.065 +0.195	30.0	36.0	15.0	3.0	24.195	24.065	30.025	30.000	24.000	23.948
MFM-2430-20	24.0	+0.065 +0.195	30.0	36.0	20.0	3.0	24.195	24.065	30.025	30.000	24.000	23.948
MFM-2430-30	24.0	+0.065 +0.195	30.0	36.0	30.0	3.0	24.195	24.065	30.025	30.000	24.000	23.948
MFM-2532-12	25.0	+0.065 +0.195	32.0	38.0	12.0	4.0	25.195	25.065	32.025	32.000	25.000	24.948
MFM-2532-15	25.0	+0.065 +0.195	32.0	38.0	15.0	4.0	25.195	25.065	32.025	32.000	25.000	24.948
MFM-2532-20	25.0	+0.065 +0.195	32.0	38.0	20.0	4.0	25.195	25.065	32.025	32.000	25.000	24.948
MFM-2532-30	25.0	+0.065 +0.195	32.0	38.0	30.0	4.0	25.195	25.065	32.025	32.000	25.000	24.948
MFM-2532-40	25.0	+0.065 +0.195	32.0	38.0	40.0	4.0	25.195	25.065	32.025	32.000	25.000	24.948
MFM-2734-20	27.0	+0.065 +0.195	34.0	40.0	20.0	4.0	27.195	27.065	34.025	34.000	27.000	26.948
MFM-2734-30	27.0	+0.065 +0.195	34.0	40.0	30.0	4.0	27.195	27.065	34.025	34.000	27.000	26.948

iglide® M250  
Flange - MM

PDF: [www.igus.com/iglide-pdfs](http://www.igus.com/iglide-pdfs)  
CAD: [www.igus.com/iglide-CAD](http://www.igus.com/iglide-CAD)  
RoHS info: [www.igus.com/RoHS](http://www.igus.com/RoHS)

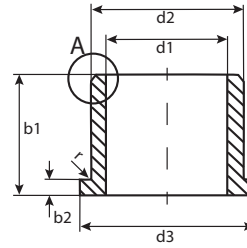
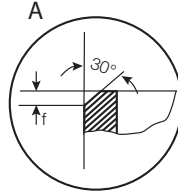


M250



# iglide® Plain Bearings M250 - Flange Bearing, MM

iglide® M250  
Flange - MM



For tolerance values  
please refer to page 2.4

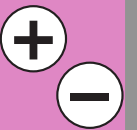
r = max. 0.5

Dimensions according to ISO 3547-1 and special dimensions

Part Number	d1 <sup>1)</sup>		d2	d3	b1	b2	I.D. After Pressfit		Housing Bore		Shaft Size	
	After Pressfit in Ø H7						Max.	Min.	Max.	Min.	Max.	Min.
MFM-2734-40	27.0	+0.065 +0.195	34.0	40.0	40.0	4.0	27.195	27.065	34.025	34.000	27.000	26.948
MFM-2836-20	28.0	+0.065 +0.195	36.0	42.0	20.0	4.0	28.195	28.065	36.025	36.000	28.000	27.948
MFM-2836-30	28.0	+0.065 +0.195	36.0	42.0	30.0	4.0	28.195	28.065	36.025	36.000	28.000	27.948
MFM-2836-40	28.0	+0.065 +0.195	36.0	42.0	40.0	4.0	28.195	28.065	36.025	36.000	28.000	27.948
MFM-3035-20	30.0	+0.065 +0.195	35.0	44.0	20.0	4.0	30.195	30.060	35.025	35.000	30.000	29.948
MFM-3038-20	30.0	+0.065 +0.195	38.0	44.0	20.0	4.0	30.195	30.065	38.025	38.000	30.000	29.948
MFM-3038-30	30.0	+0.065 +0.195	38.0	44.0	30.0	4.0	30.195	30.065	38.025	38.000	30.000	29.948
MFM-3038-40	30.0	+0.065 +0.195	38.0	44.0	40.0	4.0	30.195	30.065	38.025	38.000	30.000	29.948
MFM-3240-20	32.0	+0.080 +0.240	40.0	46.0	20.0	4.0	32.240	32.080	40.025	40.000	32.000	31.938
MFM-3240-30	32.0	+0.080 +0.240	40.0	46.0	30.0	4.0	32.240	32.080	40.025	40.000	32.000	31.938
MFM-3240-40	32.0	+0.080 +0.240	40.0	46.0	40.0	4.0	32.240	32.080	40.025	40.000	32.000	31.938

Telephone 1-800-521-2747  
Fax 1-401-438-7270

Internet: <http://www.igus.com>  
email: [sales@igus.com](mailto:sales@igus.com)  
QuickSpec: <http://www.igus.com/iglide-quickspec>





iglide® Plain Bearings  
M250 - Notes

iglide® M250

Telephone 1-800-521-2747  
Fax 1-401-438-7270

Internet: <http://www.igus.com>  
email: [sales@igus.com](mailto:sales@igus.com)  
QuickSpec: <http://www.igus.com/iglide-quickspec>