

RS-232 Adaptor

Features

- powerful class 1 Bluetooth 'plug-in' device
- fully approved standalone product – no approvals cost
- powerful TDK Terminal control centre
- TDK Configuration utility
- simple AT style command set control
- integrated antenna with up to 250m¹ range
- field upgradeable
- remotely configurable
- status LEDs
- supported profiles – Serial, DUN²



Overview

blu²ⁱ RS-232 Adaptor effortlessly upgrades any device with a standard DB9 RS-232 connection to Bluetooth Wireless Technology®. The adaptor takes advantage of TDK Systems' pre-approved blu²ⁱ Module and is controlled with the unique AT based command set.

With excellent ranges up to 250m¹ the blu²ⁱ RS-232 Adaptor can connect to any Bluetooth device supporting the same profile; it can be used a cable replacement solution.

If ease of configuration and usability are your prime concerns then the blu²ⁱ RS-232 Adaptor comes with free TDK Configuration and TDK Terminal utilities.

Target application areas

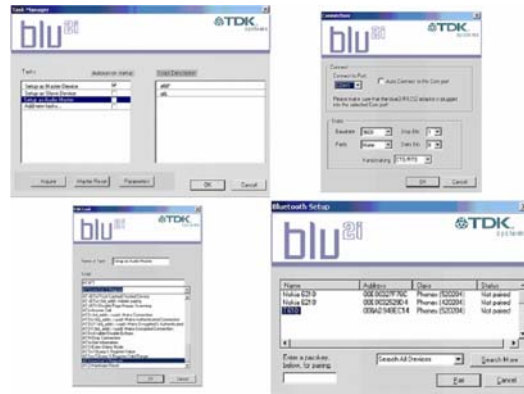
- cable replacement
- retail
- healthcare
- automotive

Key benefits

- less design time required
- excellent mobility between installations
- plug and play
- easily configured

TDK Configuration and TDK Terminal utilities

- Total control at a glance
- Easy to follow scripting
- Pair and connect
- Commissioning tool



Specifications

Hardware Feature	Implementation
Bluetooth Transmission	Class 1
Frequency	2.400 – 2.485 GHz
Max Transmit Power	+6dBm
Min Transmit Power	+0dBm
Receive Sensitivity	Better than -85dB
Antenna Gain	+2dBi
Range	250m free space ¹
Data Transfer rate	Up to 230Kbps (device should be preset to 115Kbps)
Physical size	24 x 65 x 9 (mm) – 8g
Fully Bluetooth pre-qualified	Bluetooth 1.1 product listing
Current consumption	TBD
Temperature Range	-20°C to +75 °C
Status lights	Indicating data transfer and connection states
Physical connection	9 way female D type. 3V RS-232 interface to EIA/ITA -232. 0.5m of multi-core shielded cable.
Supported OSs (Applications)	Windows 98SE, 2000, ME and XP
PSU	6V 2.1mm 'barrel' style power supply included

Feature	Implementation
Fully Bluetooth approved	The blu ²¹ RS-232 Adaptor is fully approved as a Bluetooth end product.
TDK Terminal control centre	Full of useful tools that help you understand, configure and change the way the blu ²¹ RS-232 Adaptor works
TDK Configuration utility	Configure the blu ²¹ RS-232 Adaptor using one of the scripts provided or create our own
Remotely configurable	Configuration of S Registers and other parameters possible from a remote device, such as a second blu ²¹ RS-232 Adaptor.
Future proofed	The blu ²¹ RS-232 Adaptor's firmware is field upgradeable
Onboard memory	Ten non-volatile 32 bit memory locations are available for general purpose use by the host and accessible through the S Register interface
Configurable UART	The onboard UART can be configured for either low latency or maximum throughput at baud rates from 1200 to 921600
Profile support	DUN ² , Serial
Status LEDs	The blu ²¹ RS-232 Adaptor's two LEDs can be configured for different modes of operation e.g. to show Bluetooth connection state

¹ Free space range is dependent of the location, the type and number of other wireless devices in the area

² Must be approved in conjunction with manufacturer's hardware