

# Datasheet

Stock No: 170-7730

# RS Pro Nylon Cable Tie

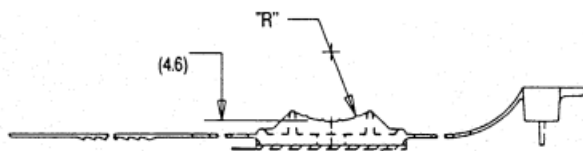


Image representative of range

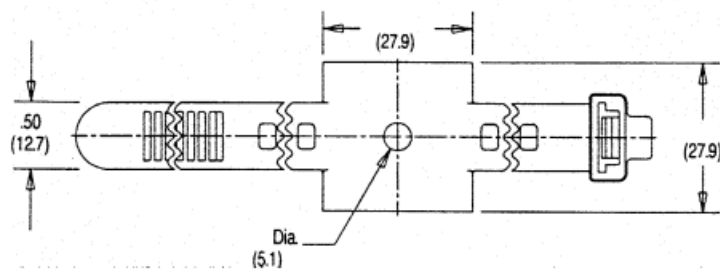
## Product Details

### Nylon component attachment

Allows for the attachment of components, tubes or cables with a  $\varnothing$  of 9.5 to 38.1 mm.  
Removable.



Fixing:	$\varnothing$ 5.1 mm
Material:	nylon 6 // 6
Colour:	black



ref.	$\varnothing$ tightening	R
Richco	(mm)	(mm)
UMS-16-45	9.5/25.4	12.7
UMS-24-45	9.5/38.1	19.1

## Specifications:

Material	Nylon 66
Quantity	10