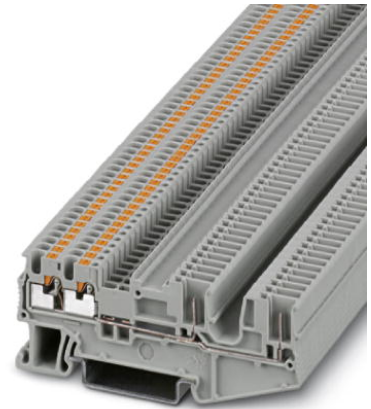



PT 1,5/S-QUATTRO/2P

Order No.: 3212390



Feed-through modular terminal block, Connection method: Push-in / plug connection, Cross section: 0.14 mm² - 1.5 mm², AWG 26 - 14, Width: 3.5 mm, Color: gray, Mounting type: NS 35/7.5, NS 35/15

Commercial data

EAN	 4 046356 565332
Pack	50
Customs tariff	85369010
Country of Origin	PL
Catalog page information	Page 298 (CL1-2011)

Product notes

WEEE/RoHS-compliant since:
12/02/2010



Please note that the data given here has been taken from the online catalog. For comprehensive information and data, please refer to the user documentation at <http://www.download.phoenixcontact.com>. The General Terms and Conditions of Use apply to Internet downloads.

Technical data**General**

Number of levels	1
Number of connections	4
Color	gray
Insulating material	PA
Inflammability class according to UL 94	V0

Dimensions

Width	3.5 mm
Length	78.5 mm
Height NS 35/7.5	32 mm
Height NS 35/15	39.5 mm

Technical data

Maximum load current	17.5 A (with 1.5 mm ² conductor cross section)
Rated surge voltage	6 kV
Pollution degree	3
Surge voltage category	III
Insulating material group	I
Connection in acc. with standard	IEC 61984
Nominal current I _N	17.5 A (observe derating)
Nominal voltage U _N	500 V
Open side panel	ja

Connection data

Conductor cross section solid min.	0.14 mm ²
Conductor cross section solid max.	1.5 mm ²
Conductor cross section stranded min.	0.14 mm ²
Conductor cross section stranded max.	1.5 mm ²
Conductor cross section AWG/kcmil min.	26
Conductor cross section AWG/kcmil max	14
Conductor cross section stranded, with ferrule without plastic sleeve min.	0.14 mm ²
Conductor cross section stranded, with ferrule without plastic sleeve max.	1.5 mm ²
Conductor cross section stranded, with ferrule with plastic sleeve min.	0.14 mm ²
Conductor cross section stranded, with ferrule with plastic sleeve max.	1 mm ²
Connection method	Push-in / plug connection
Stripping length	8 mm
Internal cylindrical gage	A1 / B1

Certificates

Certification

CUL, GOST, UL

Accessories

Item	Designation	Description
Assembly		
3030815	ATP-ST QUATTRO	Partition plate, Length: 90.9 mm, Width: 2 mm, Height: 45 mm, Color: gray
3022276	CLIPFIX 35-5	Snap-on end bracket, for NS 35/7.5 or NS 35/15 DIN rail, can be fitted with Zack strip ZB 5 and ZBF 5, terminal strip marker KLM 2 and KLM, parking facility for FBS...5, FBS...6, KSS 5, KSS 6, width: 5,15 mm, color: gray
1201442	E/UK	End clamp, for assembly on NS 32 or NS 35/7.5 DIN rail
0801704	NS 35/ 7,5 AL UNPERF 2000MM	DIN rail, material: Aluminum, unperforated, height 7.5 mm, width 35 mm, length: 2 m
0801762	NS 35/ 7,5 CU UNPERF 2000MM	DIN rail, material: Copper, unperforated, height 7.5 mm, width 35 mm, length: 2 m
1207640	NS 35/ 7,5 PERF 755MM	DIN rail, material: steel galvanized and passivated with a thick layer, perforated, height 7.5 mm, width 35 mm, length: 755 mm
1207653	NS 35/ 7,5 PERF 955MM	DIN rail, material: steel galvanized and passivated with a thick layer, perforated, height 7.5 mm, width 35 mm, length: 955 mm
1207666	NS 35/ 7,5 PERF 1155MM	NS 35 DIN rail, height 7.5 mm, length 1155 mm
0801733	NS 35/ 7,5 PERF 2000MM	DIN rail, material: steel galvanized and passivated with a thick layer, perforated, height 7.5 mm, width 35 mm, length: 2000 mm
1208131	NS 35/ 7,5 PERF/...	DIN rail, Width: 35 mm, Height: 7.5 mm, Color: silver
0801681	NS 35/ 7,5 UNPERF 2000MM	DIN rail, material: Steel, unperforated, height 7.5 mm, width 35 mm, length: 2 m
1208115	NS 35/ 7,5 UNPERF/...	DIN rail, Width: 35 mm, Height: 7.5 mm, Color: silver
1208128	NS 35/ 7,5 UNPERF/SO/...	DIN rail, Width: 35 mm, Height: 7.5 mm, Color: silver
0801377	NS 35/ 7,5 V2A UNPERF 2000MM	DIN rail, Width: 35 mm, Height: 7.5 mm, Length: 2000 mm, Color: silver
1206421	NS 35/ 7,5 ZN PERF 2000MM	DIN rail, material: Galvanized, perforated, height 7.5 mm, width 35 mm, length: 2 m
1206434	NS 35/ 7,5 ZN UNPERF 2000MM	DIN rail, material: Galvanized, unperforated, height 7.5 mm, width 35 mm, length: 2 m

1201895	NS 35/15 CU UNPERF 2000MM	DIN rail, material: Copper, unperforated, 1.5 mm thick, height 15 mm, width 35 mm, length: 2 m
1201730	NS 35/15 PERF 2000MM	DIN rail, material: steel galvanized and passivated with a thick layer, perforated, height 15 mm, width 35 mm, length: 2000 mm
1201714	NS 35/15 UNPERF 2000MM	DIN rail, material: Steel, unperforated, height 15 mm, width 35 mm, length: 2 m
1208144	NS 35/15 UNPERF/...	DIN rail, Width: 35 mm, Height: 15 mm, Color: silver
1208157	NS 35/15 UNPERF/SO/...	DIN rail, Width: 35 mm, Height: 15 mm, Color: silver
1206586	NS 35/15 ZN UNPERF 2000MM	DIN rail, material: Galvanized, unperforated, height 15 mm, width 35 mm, length: 2 m

Bridges

3214356	RB ST (2,5/4)-1,5/S	Reducing bridge, Number of positions: 2, Color: red
3213250	RB ST 6-1,5/S	Reducing bridge, Number of positions: 2, Color: red

Covers

3212426	D-PT 1,5/S-QUATTRO/2P	Cover, Length: 78.5 mm, Width: 2.2 mm, Color: gray
---------	-----------------------	--

General

5146040	CLIP-PROJECT ADVANCED	Multilingual software for easy planning of Phoenix Contact on DIN rails together with the integrated TRABTECH-select software module for planning comprehensive surge protection concepts.
5146053	CLIP-PROJECT PROFESSIONAL	Multi-lingual software for terminal strip project planning. A marking module allows professional labeling of markers and labels for marking terminal blocks, conductors, cables and devices. The additionally integrated software module TRABTECH-select for planning comprehensive surge protection concepts.
3213056	FBS 10-3,5	Jumper, Number of positions: 10, Color: red
3213125	FBS 10-3,5 BU	Jumper, Number of positions: 10, Color: blue
3213014	FBS 2-3,5	Jumper, Number of positions: 2, Color: red
3213086	FBS 2-3,5 BU	Jumper, Number of positions: 2, Color: blue
3213069	FBS 20-3,5	Jumper, Number of positions: 20, Color: red
3213138	FBS 20-3,5 BU	Jumper, Number of positions: 20, Color: blue
3213027	FBS 3-3,5	Jumper, Number of positions: 3, Color: red
3213099	FBS 3-3,5 BU	Jumper, Number of positions: 3, Color: blue
3213030	FBS 4-3,5	Jumper, Number of positions: 4, Color: red
3213109	FBS 4-3,5 BU	Jumper, Number of positions: 4, Color: blue
3213043	FBS 5-3,5	Jumper, Number of positions: 5, Color: red
3213112	FBS 5-3,5 BU	Jumper, Number of positions: 5, Color: blue

Marking

0809298	GBS-ZB/26X6	Group marking label, snaps onto terminal center for screw, spring-cage and quick connection terminal blocks, labeled with ESL 26x6 mm or EST 25x6 mm, in the foot part with Zack marker strip, length: 29 mm
3040588	PC	Keying star, Length: 3 mm, Width: 3 mm, Height: 6 mm, Color: red
0828295	TMT (EX9,5)R	Marker for terminal blocks, Roll, white, Unlabeled, Can be labeled with: Thermomark R, Thermomark X, Thermomark S, Mounting type: Snap into universal marker groove, Snap into flat marker groove, Lettering field: 9.5 x ... mm
0829415	ZB 3,5 CUS	Zack marker strip, Strip, white, Labeled according to customer specifications, Mounting type: Snap into tall marker groove, For terminal block width: 3.5 mm, Lettering field: 3.5 x 10.5 mm
0829414	ZB 3,5:UNBEDRUCKT	Zack marker strip, Strip, white, Unlabeled, Can be labeled with: Plotter, Mounting type: Snap into tall marker groove, For terminal block width: 3.5 mm, Lettering field: 3.5 x 10.5 mm
0829394	ZBF 3,5 CUS	Zack Marker strip, flat, Strip, white, Labeled according to customer specifications, Mounting type: Snap into flat marker groove, For terminal block width: 3.5 mm, Lettering field: 3.5 x 5.2 mm
0829392	ZBF 3,5:UNBEDRUCKT	Zack Marker strip, flat, Strip, white, Unlabeled, Can be labeled with: Plotter, Mounting type: Snap into flat marker groove, For terminal block width: 3.5 mm, Lettering field: 3.5 x 5.2 mm

Plug/Adapter

0201731	MPS-IH BK	Insulating sleeve, Color: black
0201689	MPS-IH BU	Insulating sleeve, Color: blue
0201702	MPS-IH GN	Insulating sleeve, Color: green
0201728	MPS-IH GY	Insulating sleeve, Color: gray
0201676	MPS-IH RD	Insulating sleeve, Color: red
0201715	MPS-IH VT	Insulating sleeve, Color: violet
0201663	MPS-IH WH	Insulating sleeve, Color: white
0201692	MPS-IH YE	Insulating sleeve, Color: yellow
0201744	MPS-MT	Test plugs

Tools

1204504	SZF 0-0,4X2,5	Actuation tool, for ST terminal blocks, also suitable for use as a bladed screwdriver, size: 0.4 x 2.5 x 75 mm, 2-component grip, with non-slip grip
---------	---------------	--

Additional products

Item	Designation	Description
General		
3212882	PR 1,5/S	Latching, Color: orange
3212895	PR 1,5/S/2	Latching, Color: orange
3212905	PRZ 1,5/S	Latching, Width: 3.5 mm, Length: 3 mm, Color: orange
3212918	PZ 1,5/S/2	Strain relief, Color: black
Plug/Adapter		
3212484	PP-H 1,5/S/1	Connectors, Connection method: Push-in connection, Number of positions: 1, Cross section: 0.14 mm ² - 1.5 mm ² , AWG 26 - 14, Width: 3.5 mm, Height: 31.3 mm, Color: gray
3212497	PP-H 1,5/S/1 BU	Connectors, Connection method: Push-in connection, Number of positions: 1, Cross section: 0.14 mm ² - 1.5 mm ² , AWG 26 - 14, Width: 3.5 mm, Height: 31.3 mm, Color: blue
3212507	PP-H 1,5/S/1 GNYE	Connectors, Connection method: Push-in connection, Number of positions: 1, Cross section: 0.14 mm ² - 1.5 mm ² , AWG 26 - 14, Width: 3.5 mm, Height: 31.3 mm, Color: green-yellow
3212659	PP-H 1,5/S/1-L	Connectors, Connection method: Push-in connection, Number of positions: 1, Cross section: 0.14 mm ² - 1.5 mm ² , AWG 26 - 14, Width: 3.5 mm, Height: 31.3 mm, Color: gray
3212662	PP-H 1,5/S/1-L BU	Connectors, Connection method: Push-in connection, Number of positions: 1, Cross section: 0.14 mm ² - 1.5 mm ² , AWG 26 - 14, Width: 3.5 mm, Height: 31.3 mm, Color: blue
3212675	PP-H 1,5/S/1-L GNYE	Connectors, Connection method: Push-in connection, Number of positions: 1, Cross section: 0.14 mm ² - 1.5 mm ² , AWG 26 - 14, Width: 3.5 mm, Height: 31.3 mm, Color: green-yellow
3212688	PP-H 1,5/S/1-M	Connectors, Connection method: Push-in connection, Number of positions: 1, Cross section: 0.14 mm ² - 1.5 mm ² , AWG 26 - 14, Width: 3.5 mm, Height: 31.3 mm, Color: gray
3212691	PP-H 1,5/S/1-M BU	Connectors, Connection method: Push-in connection, Number of positions: 1, Cross section: 0.14 mm ² - 1.5 mm ² , AWG 26 - 14, Width: 3.5 mm, Height: 31.3 mm, Color: blue
3212701	PP-H 1,5/S/1-M GNYE	Connectors, Connection method: Push-in connection, Number of positions: 1, Cross section: 0.14 mm ² - 1.5 mm ² , AWG 26 - 14, Width: 3.5 mm, Height: 31.3 mm, Color: green-yellow
3212714	PP-H 1,5/S/1-R	Connectors, Connection method: Push-in connection, Number of positions: 1, Cross section: 0.14 mm ² - 1.5 mm ² , AWG 26 - 14, Width: 3.5 mm, Height: 31.3 mm, Color: gray
3212727	PP-H 1,5/S/1-R BU	Connectors, Connection method: Push-in connection, Number of positions: 1, Cross section: 0.14 mm ² - 1.5 mm ² , AWG 26 - 14, Width: 3.5 mm, Height: 31.3 mm, Color: blue

3212730	PP-H 1,5/S/1-R GNYE	Connectors, Connection method: Push-in connection, Number of positions: 1, Cross section: 0.14 mm ² - 1.5 mm ² , AWG 26 - 14, Width: 3.5 mm, Height: 31.3 mm, Color: green-yellow
3212594	PP-H 1,5/S/10	Connectors, Connection method: Push-in connection, Number of positions: 10, Cross section: 0.14 mm ² - 1.5 mm ² , AWG 26 - 14, Width: 35 mm, Height: 31.3 mm, Color: gray
3212604	PP-H 1,5/S/11	Connectors, Connection method: Push-in connection, Number of positions: 11, Cross section: 0.14 mm ² - 1.5 mm ² , AWG 26 - 14, Width: 38.5 mm, Height: 31.3 mm, Color: gray
3212617	PP-H 1,5/S/12	Connectors, Connection method: Push-in connection, Number of positions: 12, Cross section: 0.14 mm ² - 1.5 mm ² , AWG 26 - 14, Width: 42 mm, Height: 31.3 mm, Color: gray
3212620	PP-H 1,5/S/13	Connectors, Connection method: Push-in connection, Number of positions: 13, Cross section: 0.14 mm ² - 1.5 mm ² , AWG 26 - 14, Width: 45.5 mm, Height: 31.3 mm, Color: gray
3212633	PP-H 1,5/S/14	Connectors, Connection method: Push-in connection, Number of positions: 14, Cross section: 0.14 mm ² - 1.5 mm ² , AWG 26 - 14, Width: 49 mm, Height: 31.3 mm, Color: gray
3212646	PP-H 1,5/S/15	Connectors, Connection method: Push-in connection, Number of positions: 15, Cross section: 0.14 mm ² - 1.5 mm ² , AWG 26 - 14, Width: 52.5 mm, Height: 31.3 mm, Color: gray
3212510	PP-H 1,5/S/2	Connectors, Connection method: Push-in connection, Number of positions: 2, Cross section: 0.14 mm ² - 1.5 mm ² , AWG 26 - 14, Width: 7 mm, Height: 31.3 mm, Color: gray
3212523	PP-H 1,5/S/3	Connectors, Connection method: Push-in connection, Number of positions: 3, Cross section: 0.14 mm ² - 1.5 mm ² , AWG 26 - 14, Width: 10.5 mm, Height: 31.3 mm, Color: gray
3212536	PP-H 1,5/S/4	Connectors, Connection method: Push-in connection, Number of positions: 4, Cross section: 0.14 mm ² - 1.5 mm ² , AWG 26 - 14, Width: 14 mm, Height: 31.3 mm, Color: gray
3212549	PP-H 1,5/S/5	Connectors, Connection method: Push-in connection, Number of positions: 5, Cross section: 0.14 mm ² - 1.5 mm ² , AWG 26 - 14, Width: 17.5 mm, Height: 31.3 mm, Color: gray
3212552	PP-H 1,5/S/6	Connectors, Connection method: Push-in connection, Number of positions: 6, Cross section: 0.14 mm ² - 1.5 mm ² , AWG 26 - 14, Width: 21 mm, Height: 31.3 mm, Color: gray
3212565	PP-H 1,5/S/7	Connectors, Connection method: Push-in connection, Number of positions: 7, Cross section: 0.14 mm ² - 1.5 mm ² , AWG 26 - 14, Width: 24.5 mm, Height: 31.3 mm, Color: gray
3212578	PP-H 1,5/S/8	Connectors, Connection method: Push-in connection, Number of positions: 8, Cross section: 0.14 mm ² - 1.5 mm ² , AWG 26 - 14, Width: 28 mm, Height: 31.3 mm, Color: gray
3212581	PP-H 1,5/S/9	Connectors, Connection method: Push-in connection, Number of positions: 9, Cross section: 0.14 mm ² - 1.5 mm ² , AWG 26 - 14, Width: 31.5 mm, Height: 31.3 mm, Color: gray

Drawings

Circuit diagram

