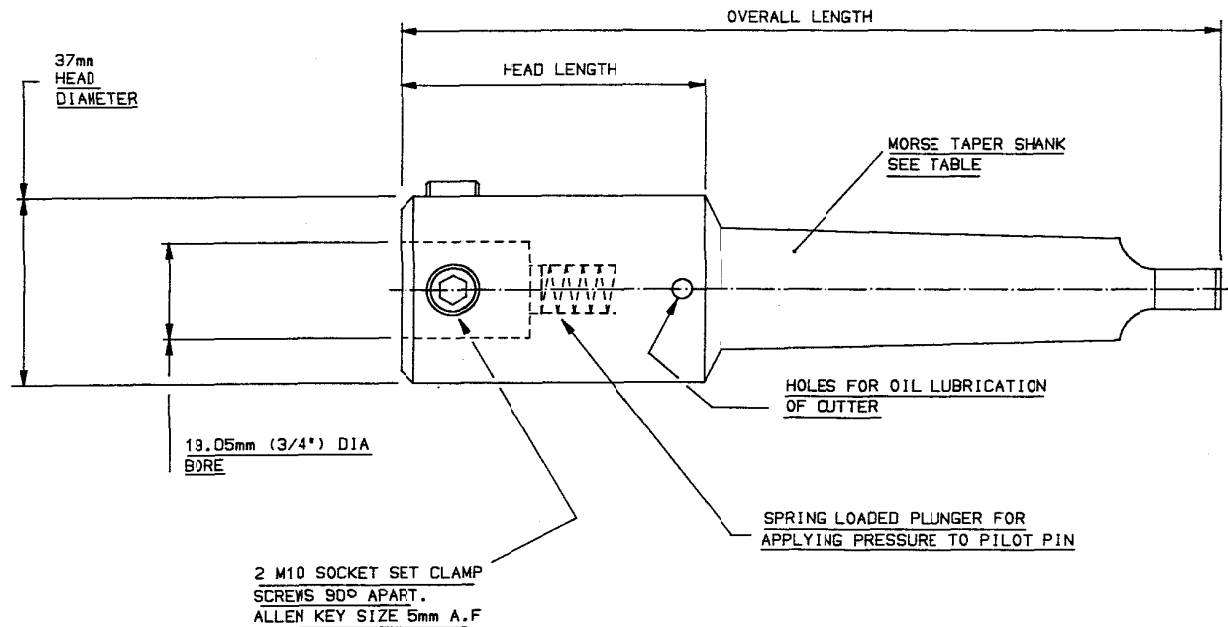


DRAWING N <sup>o</sup> TDS-212	
SH <sup>T</sup> .	MOD. A



2 M10 SOCKET SET CLAMP  
SCREWS 90° APART.  
ALLEN KEY SIZE 5mm A.F

CATALOGUE REFERENCE	INTERNAL PRODUCT CODE	OVERALL LENGTH	HEAD LENGTH	APPROX WEIGHT (grammes)
No2 MORSE TAPER ARBOR REF PBA 101	18Y101	155mm	74mm	580g
No3 MORSE TAPER ARBOR REF PBA 102	18Y102	158mm	58mm	560g
No4 MORSE TAPER ARBOR REF PBA 103	18Y103	183mm	58mm	880g

MOD N <sup>o</sup>	MOD NOTE REF N <sup>o</sup>	DATE OF MCD
A	MOD 1856	28-01-02

MATERIAL  
ALL PARTS STEEL

FINISH  
SHANK, HEAD AND BORE DIAMETERS - GROUND FINISH  
OTHER FEATURES CHEMICAL BLACKED

REMARKS

THIS DRAWING IS FOR CUSTOMER COMMUNICATION & CATALOGUE DATA ONLY

DATE	28-01-02	CATALOGUE REF. SEE REFERENCE
DRAWN	G WINNARD	
CHECK <sup>o</sup>		
DO NOT SCALE		

TITLE No2,3 & 4 MORSE TAPER ARBORS FOR DRIVING POWERBOR HIGH SPEED STEEL HOLE CUTTERS		
COMPUTER FILENAME :	TDS212	DRAWING N <sup>o</sup> TDS-212
G & J HALL Ltd		SH <sup>T</sup> . MOD. A

DRAWING OFFICE  
MODIFICATION SHEET

MOD NOTE No 1856

DATE OF ISSUE 28-01-02

PRODUCT POWERBOR MORSE TAPER ARBORS No 2,3 & 4

DRAWING No TDS-212 MOD A

DETAILS AND REASON FOR MODIFICATION

ARBORS WERE PRVIOUSLY HOLOCUT DESIGN.

O/ALL LENGTH No2MT WAS 156 NOW 155mm

No3MT WAS 159 NOW 158mm

No4MT WAS 184 NOW 183mm

HEAD LENGTH No2MT WAS 78 NOW 74mm

No3MT WAS 62 NOW 58mm

No4MT WAS 62 NOW 58mm

APPROX WEIGHT No2MT WAS 600g NOW 580g

No3MT WAS 580g NOW 560g

No4MT WAS 920g NOW 880g

FINISH ON PARTS NOT GROUND WAS BEAD BLAST NOW  
CHEMICAL BLACK.

REASON FOR MODIFICATION

ORIGINAL HOLOCUT DESIGN NO LONGER MANUFACTURED.

DEPARTMENTS TO TAKE CAREFUL NOTE MARKED \*

TURNING	
MILLING	
GRINDING	

ASSEMBLY	
DIE DEPT	
INSPECTION	

HEAT TREATMENT	
PRODUCTION OFFICE	
BONUS OFFICE	

PLEASE DESTROY ALL OLD PRINTS