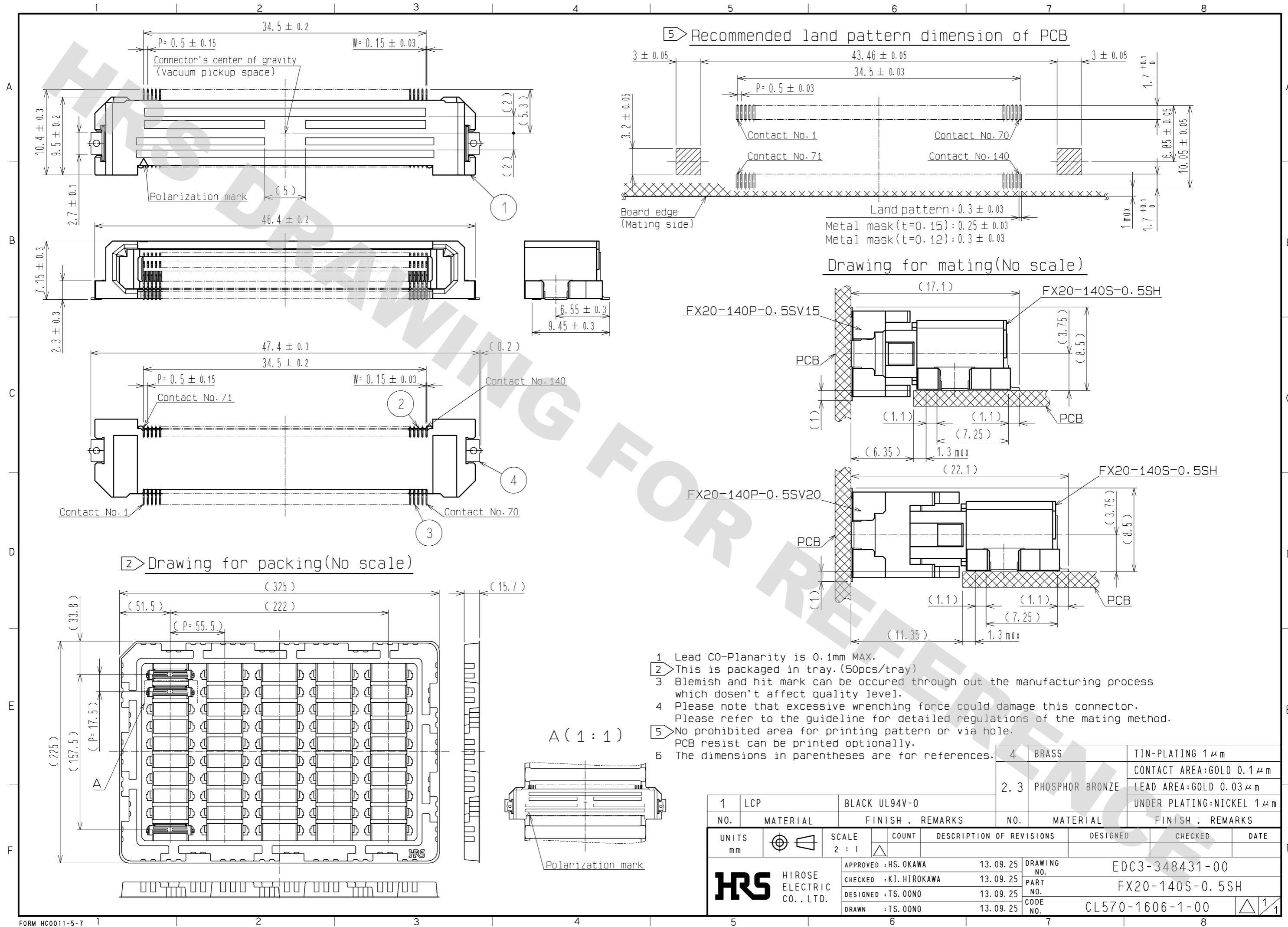
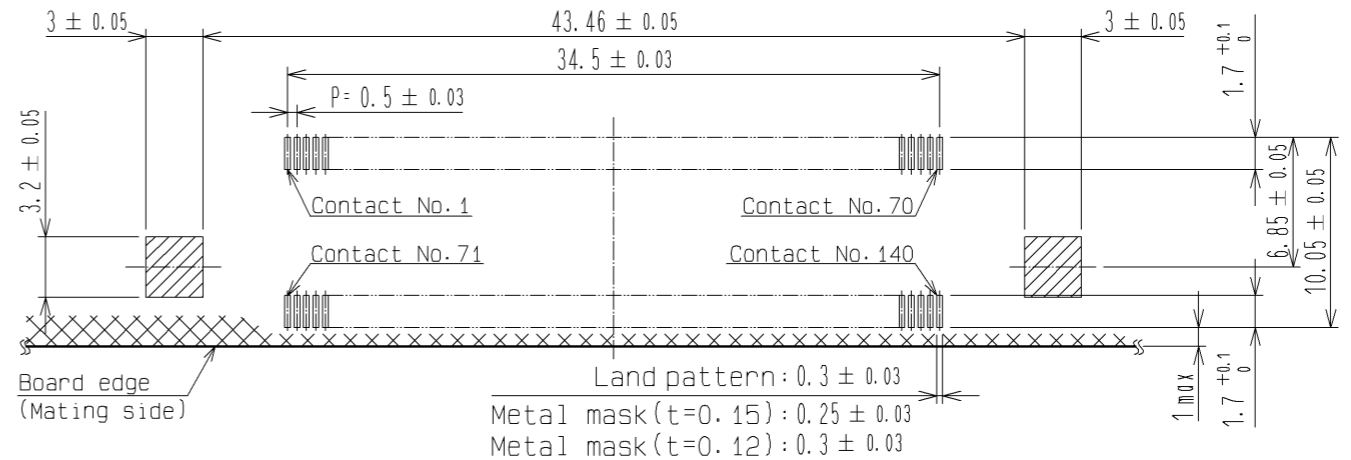


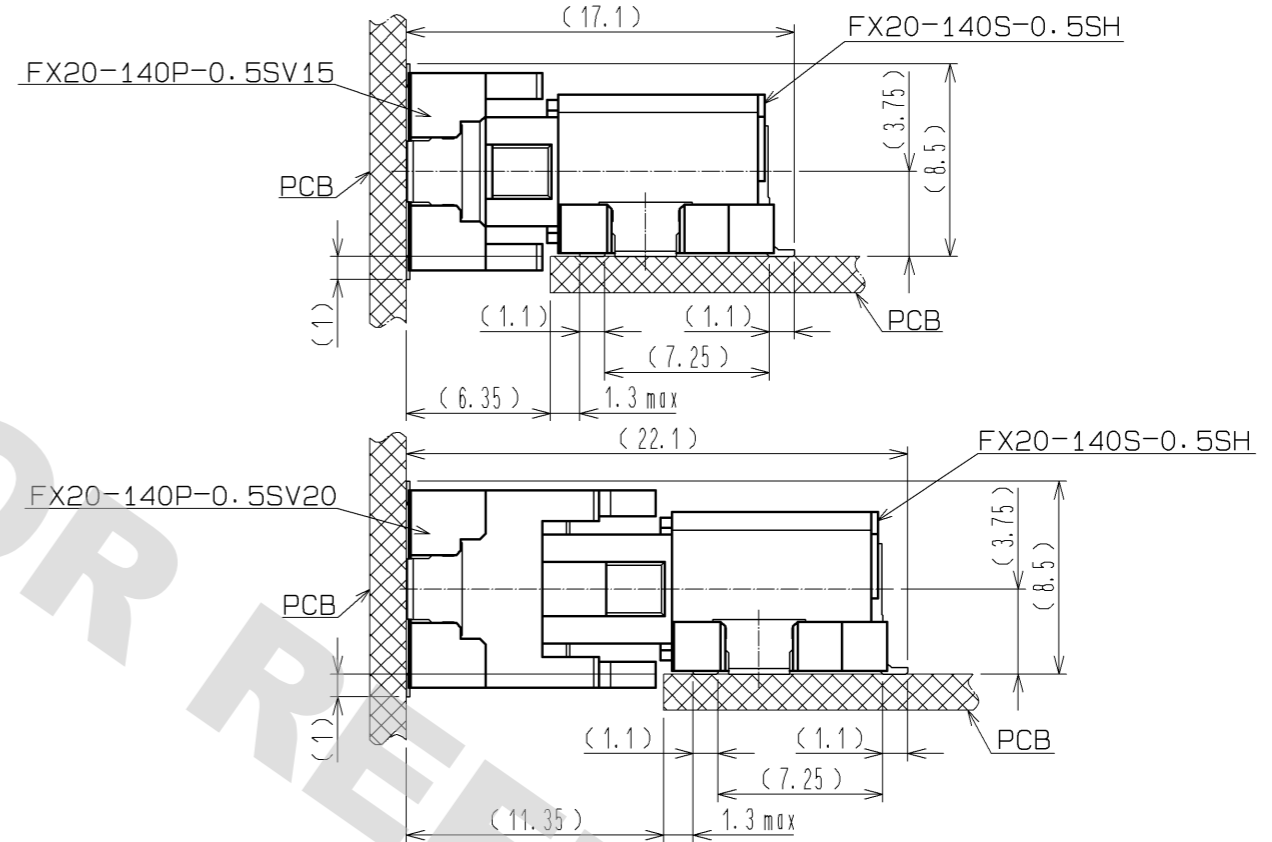
DRAWING FOR REFERENCE: This is subject to change without notice  
12/05/2013



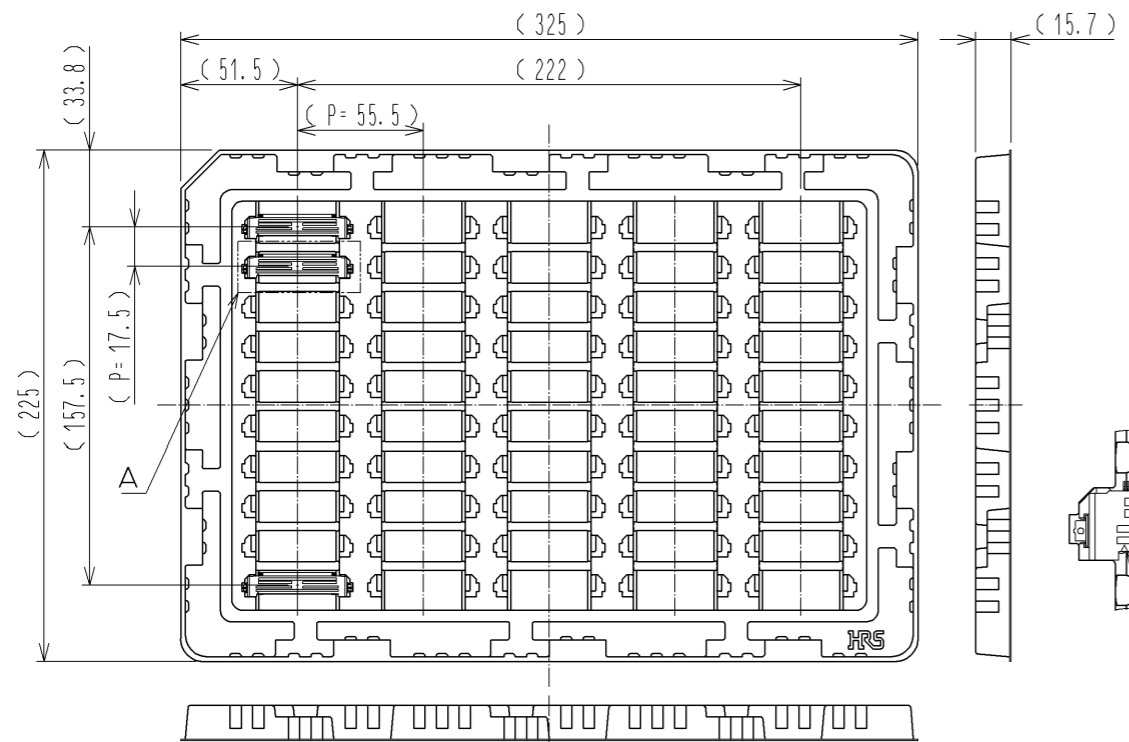
5 Recommended land pattern dimension of PCB



Drawing for mating (No scale)



2 Drawing for packing (No scale)



- 1 Lead CO-Planarity is 0.1mm MAX.
- 2 This is packaged in tray. (50pcs/tray)
- 3 Blemish and hit mark can be occurred through out the manufacturing process which dosen't affect quality level.
- 4 Please note that excessive wrenching force could damage this connector. Please refer to the guideline for detailed regulations of the mating method.
- 5 No prohibited area for printing pattern or via hole. PCB resist can be printed optionally.
- 6 The dimensions in parentheses are for references.

|      |                 |  |
|------|-----------------|--|
| 4    | BRASS           | TIN-PLATING 1 μm   |
| 2, 3 | PHOSPHOR BRONZE | CONTACT AREA: GOLD 0.1 μm<br>LEAD AREA: GOLD 0.03 μm<br>UNDER PLATING: NICKEL 1 μm |

| NO. | MATERIAL | FINISH . REMARKS | NO. | MATERIAL | FINISH . REMARKS |
|-----|----------|------------------|-----|----------|------------------|
| 1   | LCP      | BLACK UL94V-0    |     |          |                  |

| UNITS | SCALE | COUNT | DESCRIPTION OF REVISIONS | DESIGNED | CHECKED | DATE |
|-------|-------|-------|--------------------------|----------|---------|------|
| mm    | 2 : 1 | △     |                          |          |         |      |

|            |                        |          |   |
|------------|------------------------|----------|---|
| <b>HRS</b> | APPROVED : HS. OKAWA   | 13.09.25 | DRAWING NO.<br>EDC3-348431-00<br>PART NO.<br>FX20-140S-0.5SH<br>CODE NO.<br>CL570-1606-1-00 |
|            | CHECKED : KI. HIROKAWA | 13.09.25 |   |
|            | DESIGNED : TS. OONO    | 13.09.25 |   |
|            | DRAWN : TS. OONO       | 13.09.25 |   |