

UNIVERSAL ENCLOSURES

UNIVERSAL ENCLOSURES

HAND HELD CASES

HEAVY DUTY ENCLOSURES

DIN RAIL ENCLOSURES

INTERFACE SUPPORTS

ELECTRICAL ENCLOSURES

DIECAST & METAL ENCLOSURES

DESKTOP & INSTRUMENT CASES

POTTING BOXES

19" ENCLOSURES

19" CABINETS

DEVELOPMENT BOARD ENCLOSURES

CUSTOM SIZED ENCLOSURES

CUSTOM SERVICES

2000 Deep Profile

Multipurpose enclosures for application where tall electrical components require housing. The deep profile 2000 Series provides maximum utilisation of the internal volume.

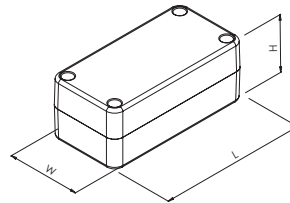
- Deep profile Lid and base moulded in ABS
- Lid mounted by four M3 machine screws
- Brass inserts in base for repeated removal of the lid
- Polished finish for ease of cleaning
- Excellent properties for machining
- Integral mounting guides in base to accept 1.6mm PCB's
- PCB Adaptors (included) for horizontal PCB mounting



SPECIFICATION

| | |
|------------------------|---|
| Materials | Lid and base high impact ABS |
| Operating Temperature | Resistant to temperatures of up to 85°C |
| Protection class | IP54 as standard |
| Standard colours | Grey(GY), Black(BLK) |
| Standard unit includes | Base & deep profile lid 4x M3 machine screws PCB adaptors |

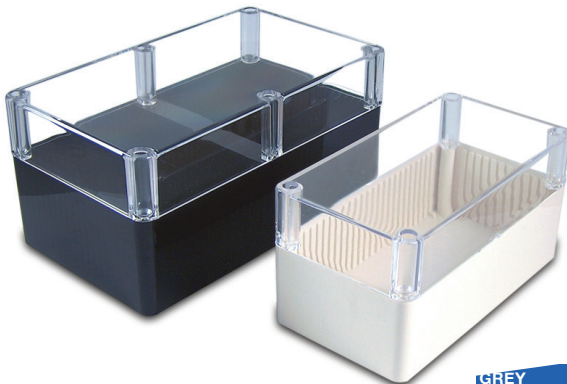
| GREY | BLACK | LENGTH | WIDTH | HEIGHT |
|------------------|--------------------|--------|-------|--------|
| BIM2002/22-GY/GY | BIM2002/22-BLK/BLK | 100mm | 50mm | 40mm |
| BIM2004/24-GY/GY | BIM2004/24-BLK/BLK | 120mm | 65mm | 60mm |
| BIM2005/25-GY/GY | BIM2005/25-BLK/BLK | 150mm | 80mm | 76mm |
| BIM2006/26-GY/GY | BIM2006/26-BLK/BLK | 190mm | 110mm | 90mm |



2000 Deep Profile Clear Lid

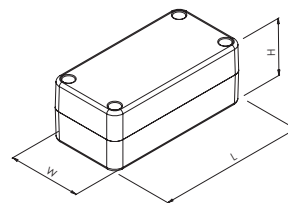
Extensive range of electronic enclosures for applications that require visible electronics and high profile components. Suitable for both electronic and electrical applications.

- Deep profile lid moulded in transparent high impact ABS
- Lid mounted by four M3 machine screws
- Brass inserts in base for repeated removal of the lid
- Polished finish for ease of cleaning
- Integral mounting guides in base to accept 1.6mm PCB's
- PCB Adaptors (included) for horizontal PCB mounting



SPECIFICATION

| | |
|------------------------|---|
| Materials | Base high impact ABS Lid transparent high impact ABS |
| Operating Temperature | Resistant to temperatures of up to 85°C |
| Protection class | IP54 |
| Standard colours | Grey(GY), Black(BLK) & White(WH) |
| Standard unit includes | Base & clear deep profile lid 4x M3 machine screws PCB adaptors |



| GREY | BLACK | WHITE | LENGTH | WIDTH | HEIGHT |
|-------------------|--------------------|-------------------|--------|-------|--------|
| BIM2002/22-GY/CLR | BIM2002/22-BLK/CLR | BIM2002/22-WH/CLR | 100mm | 50mm | 40mm |
| BIM2004/24-GY/CLR | BIM2004/24-BLK/CLR | BIM2004/24-WH/CLR | 120mm | 65mm | 60mm |
| BIM2005/25-GY/CLR | BIM2005/25-BLK/CLR | BIM2005/25-WH/CLR | 150mm | 80mm | 76mm |
| BIM2006/26-GY/CLR | BIM2006/26-BLK/CLR | BIM2006/26-WH/CLR | 190mm | 110mm | 90mm |