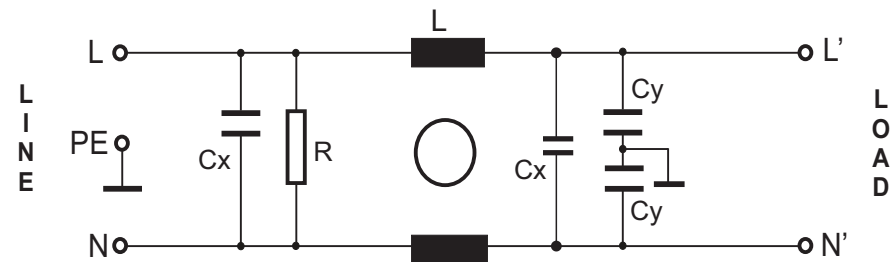
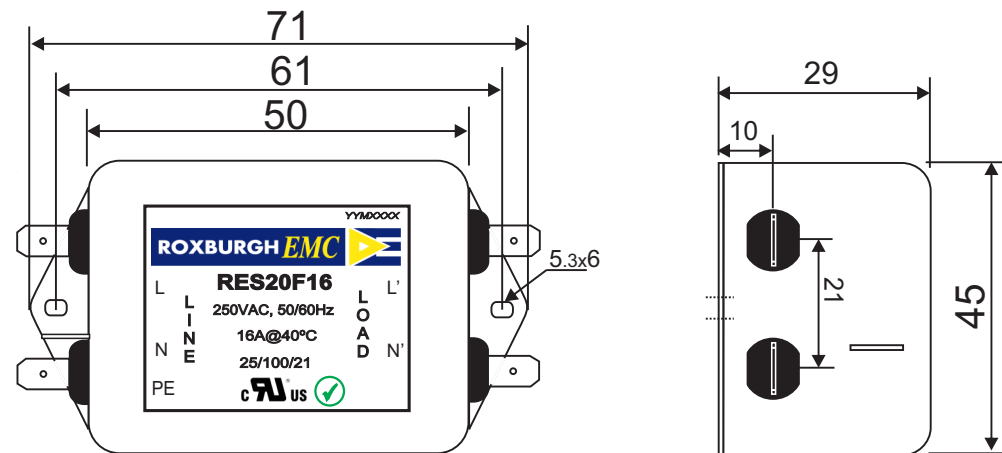


| | |
|---|--|
| RES20F16 | Rev. 0 |
| CHARACTERISTICS: | |
| Rated Voltage: | 250VAC max |
| Rated Current at Ambient: | 16A @ 40°C |
| Operating Frequency: | DC-400HZ |
| Climatic Class (IEC60068-1): | 25/100/21 |
| Temperature Range: | -25°C to +100°C |
| Over load Current: | 1.5 x Rated Ct. for 1 Min |
| Operational Leakage current : (at 230VAC/50Hz and Total C +/-20%) | 0.74 mA max |
| Worst case Leakage current : (N interrupted and Total C +/-20%) | <1.11 mA max |
| DCR @ 25°C (+/-25%) : | 50 mΩ |
| Test Voltage (100%) for 2 sec:- | L-N: 1100VDC L-GND: 3000VDC |
| Ingress Protection: | IP 20 |
| Weight (Approximate): | 150 gr |
| FILTER PARAMETERS: | |
| Total Inductance (L-L'+N-N') @10KHz: | 0.65mH +50%,-30% |
| Total Capacitance (L-L/L-N) @1KHz: | 0.3μF +/- -20% |
| Total Capacitance (L/N-GND) @1KHz: | 9.4nF +/- -20% |
| Total Resistance (L-L/L-N): | 1M Ω +/- -10% |
| Total Resistance (L/N-GND): | |
| APPROVALS: REACH RoHS UL | APPROVED BY AJAY Date: 15-03-2014 |

CIRCUIT DIAGRAM:



MECHANICAL DIMENSION (mm):



Note:

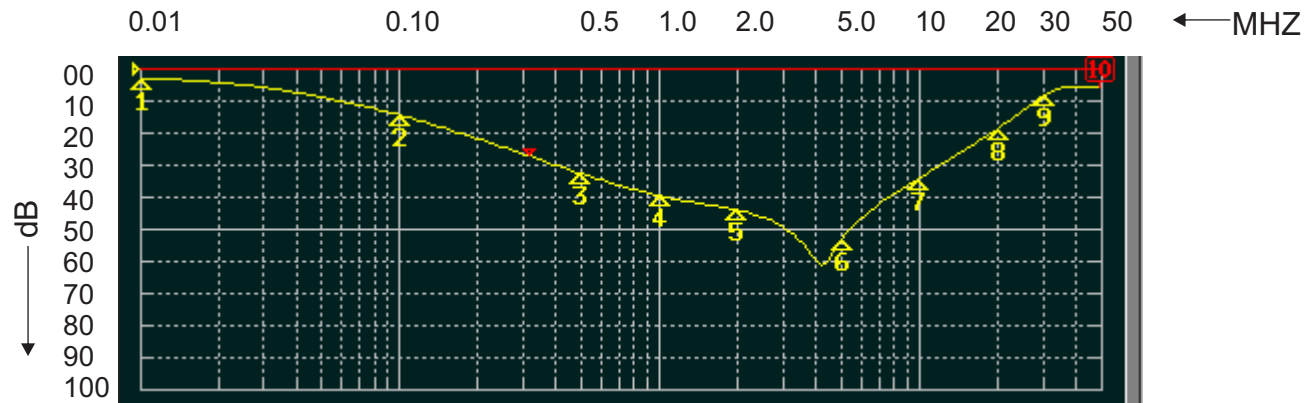
Housing matl. Fe with Ni Plated
Fast-On Terminal (6.3 x 0.8mm)
Connections

TOLERANCE: +/-1.0 mm

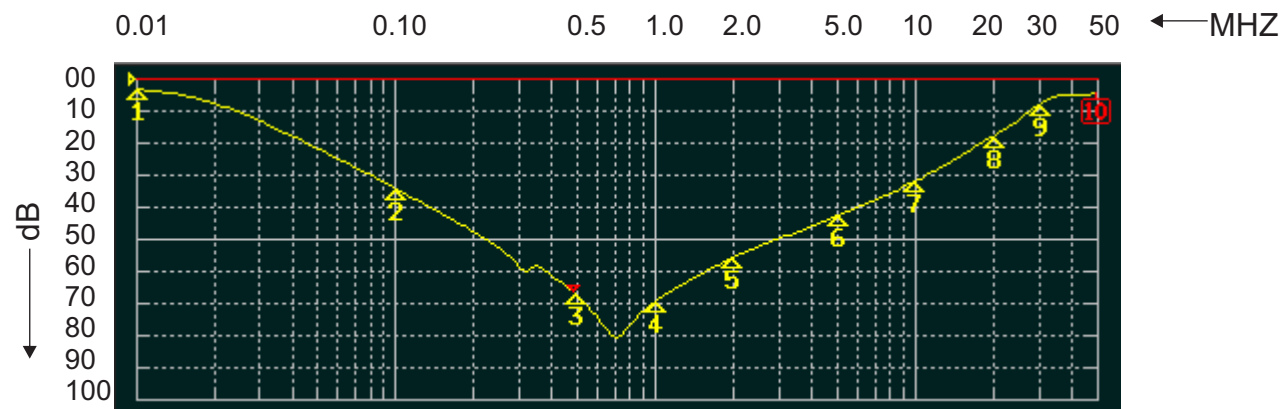


ROXBURGH EMC
FILTER INSERTION LOSS CHARACTERISTICS
CISPR 17 - 50 OHM METHOD

RES20F16



COMMON MODE



DIFFERENTIAL MODE

