

Datasheet

RS Pro Aluminium Concealed Fixings Anodised Handle, 108mm x 34mm x 8mm 100mm

RS Stock No: **237-867**



Product Details

RS Pro drawer handle measures 108 x 34 x 8 mm. This handle is made of aluminium with anodised finishing for added durability. The fixing centres are 100 mm apart.

Features and Benefits

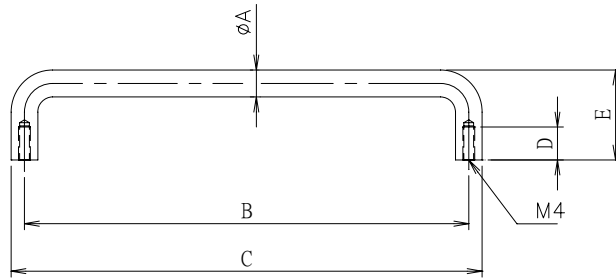
- Clear anodised rounded ends
- Reverse panel fixing
- Suitable for concealed fixings



ENGLISH

Specifications:

| | |
|-------------------|-----------|
| Concealed Fixings | Yes |
| Finish | Anodised |
| Material | Aluminium |
| Fixing Centres | 100 mm |
| Height | 34 mm |
| Length | 108 mm |
| Width | 8 mm |



| STOCK NO. | Dia mm (A) | C.C mm (B) | Length mm (C) | D mm | Height mm (E) | Weightt (g) | Material |
|-----------|------------|------------|---------------|------|---------------|-------------|----------|
| 237-889 | 8 | 52 | 60 | 8 | 34 | 14 | Aluminum |
| 237-873 | 8 | 80 | 88 | 8 | 34 | 24 | Aluminum |
| 237-867 | 8 | 100 | 108 | 8 | 34 | 27 | Aluminum |
| 237-851 | 8 | 120 | 128 | 8 | 34 | 30 | Aluminum |
| 237-845 | 9 | 150 | 159 | 9 | 30 | 100 | SS304 |
| 237-902 | 9 | 120 | 129 | 9 | 30 | 83 | SS304 |
| 237-895 | 9 | 95 | 104 | 9 | 30 | 72 | SS304 |