

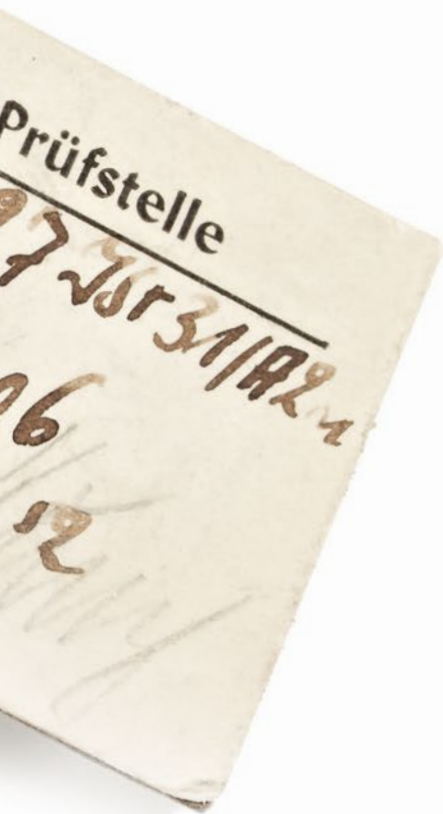




**THE ORIGINAL. SINCE 1925.**

# LOW VOLTAGE DEVICES

SCHUKO	4
FRENCH/BELGIAN EARTH	24
SWISS SYSTEM	34
INTERNATIONAL	40
OUTLET BOXES, PERILEX, ETHERNET	44
ITEM NUMBER DIRECTORY	49





# LOW VOLTAGE DEVICES

SCHUKO



---

## PLUGS AND CONNECTORS

### **SCHUKO Pro Line Hightech**

SCHUKOultra Pro	6
Pressurised-water-impermeable IP68	7

### **SCHUKO Pro Line Standard**

Solid Rubber	8
Rubber	9

### **SCHUKO Home Line Hightech**

SCHUKOultra Home	10
Solid Rubber	12

### **SCHUKO Home Line Standard**

Rubber	12
PVC	13

### **SCHUKO Home Line Basic**

Thermoplastic	14
---------------	----

---

## SOCKET OUTLETS

### **SCHUKO Pro Line Hightech**

SCHUKOplus	15
Pressurised-water-impermeable IP68	15

### **SCHUKO Pro Line Standard**

Socket Outlets	16
----------------	----

### **SCHUKO Home Line Hightech**

BOWAmini	17
BOWAmaxi	18

### **SCHUKO Home Line Standard**

BOWAcompact	20
Socket Outlets	21

### **SCHUKO Home Line Basic**

Socket Outlets	22
----------------	----

### **Accessories Socket Outlets**

23
----

# SCHUKO PRO LINE HIGHTECH

## SCHUKOultra Pro

2-pole +  $\oplus$ , 16 A 250 V, DIN 49440/441 and IEC 60884 compliant · for wires up to 3 x 2,5 mm<sup>2</sup> · 2K-technology, splash-proof IP54 ·  · 



reddot design award  
winner 2013



### PLUG

with quick release fastener and twin earthing system · SCHUKO and french/belgian standards

COLOUR	ITEM NO.	WEIGHT g/EACH	PU
black	1529100	91	5



### CONNECTOR

with voltage indicator  $\otimes$   
quick release fastener  
self-closing lid

COLOUR	ITEM NO.	WEIGHT g/EACH	PU
black	1589200	166	5



### PLUG

with quick release fastener and twin earthing system · SCHUKO and french/belgian standards

COLOUR	ITEM NO.	WEIGHT g/EACH	PU
red/black	1529140	91	5



### CONNECTOR

with voltage indicator  $\otimes$   
quick release fastener  
self-closing lid

COLOUR	ITEM NO.	WEIGHT g/EACH	PU
red/black	1589240	166	5



### PLUG

with quick release fastener and twin earthing system · SCHUKO and french/belgian standards

COLOUR	ITEM NO.	WEIGHT g/EACH	PU
grey/black	1529160	91	5



### CONNECTOR

with voltage indicator  $\otimes$   
quick release fastener  
self-closing lid

COLOUR	ITEM NO.	WEIGHT g/EACH	PU
grey/black	1589260	166	5

**SCHUKO PRO LINE HIGHTECH**  
SCHUKOultra

2-pole +  $\oplus$ , 16 A 250 V, DIN 49440/441 and IEC 60884 compliant, for wires up to 3 x 2,5 mm<sup>2</sup>, splash-proof IP54 ·  $\blacklozenge$



**THREE-WAY SOLID RUBBER CONNECTOR**

with voltage indicator  $\otimes$  and self-closing lid

COLOUR	ITEM NO.	WEIGHT g/EACH	PU
black	1173503	426	5



**THREE-WAY SOLID RUBBER CONNECTOR**

with voltage indicator  $\otimes$  and self-closing lid

COLOUR	ITEM NO.	WEIGHT g/EACH	PU
red/black	1173543	426	5



**THREE-WAY SOLID RUBBER CONNECTOR**

with voltage indicator  $\otimes$  and self-closing lid

COLOUR	ITEM NO.	WEIGHT g/EACH	PU
grey/black	1173563	426	5

**SCHUKO PRO LINE HIGHTECH**  
PRESSURISED WATER-IMPERMEABLE

2-pole +  $\oplus$ , 16 A 250 V, acc. to DIN 49442/443 and IEC 60884, for wires up to 3 x 2,5 mm<sup>2</sup>, IP68 ·  $\blacklozenge$



**PLUG WITH PROTECTIVE CAP**

COLOUR	ITEM NO.	WEIGHT g/EACH	PU
blue	1979850	150	5



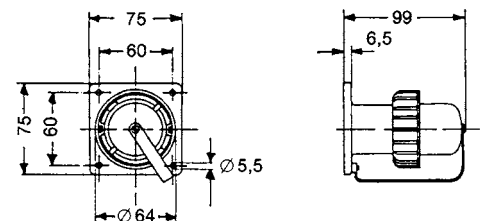
**CONNECTOR**

COLOUR	ITEM NO.	WEIGHT g/EACH	PU
blue	1976850	150	5



**PLUG WITH PROTECTIVE CAP**

COLOUR	ITEM NO.	WEIGHT g/EACH	PU
blue	1989850	130	5



# SCHUKO PRO LINE STANDARD

## SOLID RUBBER

2-pole + ⊕, 16 A 250 V, acc. to DIN 49440/441 and IEC 60884, for wires up to 3 x 2.5 mm<sup>2</sup>



### SOLID RUBBER PLUG WITH METAL QUICK RELEASE

with twin earthing system  
SCHUKO and french/belgian standards  
splash-proof IP44 ⚡

COLOUR	ITEM NO.	WEIGHT g/EACH	PU
black	1129190	106	20



### SOLID RUBBER CONNECTOR WITH QUICK RELEASE FASTENER

COLOUR	ITEM NO.	WEIGHT g/EACH	PU
black	1189090	137	10



### SOLID RUBBER CONNECTOR WITH QUICK RELEASE FASTENER

with collar/cover  
splash-proof IP44 ⚡

COLOUR	ITEM NO.	WEIGHT g/EACH	PU
black	1189290	175	10

# SCHUKO PRO LINE STANDARD

## SOLID RUBBER

2-pole + ⊕, 16 A 250 V, acc. to DIN 49440/441, for wires up to 3 x 2.5 mm<sup>2</sup>



### THREE-WAY SOLID RUBBER CONNECTOR

COLOUR	ITEM NO.	WEIGHT g/EACH	PU
black	1473190	368	5

# SCHUKO PRO LINE STANDARD

## SOLID RUBBER

2-pole + ⊕, 16 A 250 V, acc. to DIN 49440/441 and IEC 60884, for wires up to 3 x 2.5 mm<sup>2</sup>



**SOLID RUBBER PLUG**  
with twin earthing system  
SCHUKO and  
french/belgian standards  
splash-proof IP44

COLOUR	ITEM NO.	WEIGHT g / EACH	PU
black	1149290	99	20



**SOLID RUBBER CONNECTOR**

COLOUR	ITEM NO.	WEIGHT g / EACH	PU
black	1169090	119	10



**SOLID RUBBER CONNECTOR**

with collar / cover  
splash-proof IP44

COLOUR	ITEM NO.	WEIGHT g / EACH	PU
black	1169290	175	10

# SCHUKO PRO LINE STANDARD

## RUBBER

2-pole + ⊕, 16 A 250 V, acc. to DIN 49440/441 and IEC 60884, for wires up to 3 x 2.5 mm<sup>2</sup>



**RUBBER PLUG**  
with twin earthing system  
SCHUKO and  
french/belgian standards  
splash-proof IP44

COLOUR	ITEM NO.	WEIGHT g / EACH	PU
black	1149190	86	20



**RUBBER CONNECTOR**

COLOUR	ITEM NO.	WEIGHT g / EACH	PU
black	1199090	104	10



**RUBBER CONNECTOR**

with collar/cover  
splash-proof IP44

COLOUR	ITEM NO.	WEIGHT g / EACH	PU
black	1199290	137	10

# SCHUKO HOME LINE HIGHTECH

## SCHUKOultra Home

2-pole +  $\oplus$ , 16 A 250 V, acc. to DIN 49440/441 and IEC 60884, for wires up to 3 x 2,5 mm<sup>2</sup>  
 splash-proof IP44 · ELAMID



### PLUG

with twin earthing system  
 SCHUKO and  
 french/belgian standards

COLOUR	ITEM NO.	WEIGHT g/EACH	PU
blue	1519150	78	10



### PLUG

with twin earthing system  
 SCHUKO and  
 french/belgian standards

COLOUR	ITEM NO.	WEIGHT g/EACH	PU
red	1519140	78	10



### PLUG

with twin earthing system  
 SCHUKO and  
 french/belgian standards

COLOUR	ITEM NO.	WEIGHT g/EACH	PU
black	1519100	78	10



**CONNECTOR**

COLOUR	ITEM NO.	WEIGHT g / EACH	PU
blue	1579150	75	10

with shutter

COLOUR	ITEM NO.	WEIGHT g / EACH	PU
blue	1579050	75	10



**CONNECTOR**

with collar / cover  
splash-proof IP44

COLOUR	ITEM NO.	WEIGHT g / EACH	PU
blue	1579350	98	10

with collar / cover  
with shutter  
splashproof IP44

COLOUR	ITEM NO.	WEIGHT g / EACH	PU
blue	1579250	98	10



**CONNECTOR**

COLOUR	ITEM NO.	WEIGHT g / EACH	PU
red	1579140	75	10

with shutter

COLOUR	ITEM NO.	WEIGHT g / EACH	PU
red	1579040	75	10



**CONNECTOR**

with collar / cover  
splash-proof IP44

COLOUR	ITEM NO.	WEIGHT g / EACH	PU
red	1579340	98	10

with collar / cover  
with shutter  
splashproof IP44

COLOUR	ITEM NO.	WEIGHT g / EACH	PU
red	1579240	98	10



**CONNECTOR**

COLOUR	ITEM NO.	WEIGHT g / EACH	PU
black	1579100	75	10

with shutter

COLOUR	ITEM NO.	WEIGHT g / EACH	PU
black	1579000	75	10



**CONNECTOR**

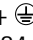
with collar / cover  
splash-proof IP44

COLOUR	ITEM NO.	WEIGHT g / EACH	PU
black	1579300	98	10

with collar / cover  
with shutter  
splashproof IP44

COLOUR	ITEM NO.	WEIGHT g / EACH	PU
black	1579200	98	10

## SCHUKO HOME LINE HIGHTECH SOLID RUBBER

2-pole + , 16 A 250 V, acc. to DIN 49440/441 and IEC 60884, for wires up to 3 x 1.5 mm<sup>2</sup>



### SOLID RUBBER PLUG

splash-proof IP44


COLOUR	ITEM NO.	WEIGHT g/EACH	PU
black	1429190	72	20



### SOLID RUBBER CONNECTOR

COLOUR	ITEM NO.	WEIGHT g/EACH	PU
black	1489090	125	10

## SCHUKO HOME LINE STANDARD RUBBER

2-pole + , 16 A 250 V, acc. to DIN 49440/441 and IEC 60884, for wires up to 3 x 1.5 mm<sup>2</sup>



### RUBBER PLUG

with twin earthing system  
SCHUKO and  
french/belgian standards  
splash-proof IP44 

COLOUR	ITEM NO.	WEIGHT g/EACH	PU
black	1419190	64	20
orange	1419170	64	20
red	1419140	64	20



### RUBBER CONNECTOR

COLOUR	ITEM NO.	WEIGHT g/EACH	PU
black	1479090	117	10
orange	1479070	117	10
red	1479040	117	10



**PLUG**  
**PVC MINI**  
with twin earthing system  
SCHUKO and  
french/belgian standards

COLOUR	ITEM NO.	WEIGHT g / EACH	PU
grey	1418060	40	20
white	1418080	40	20
yellow	1418050	40	20
black	1418000	40	20



**CONNECTOR**  
**PVC MINI**

COLOUR	ITEM NO.	WEIGHT g / EACH	PU
grey	1679060	83	10
white	1679080	83	10
yellow	1679050	83	10
black	1679000	83	10



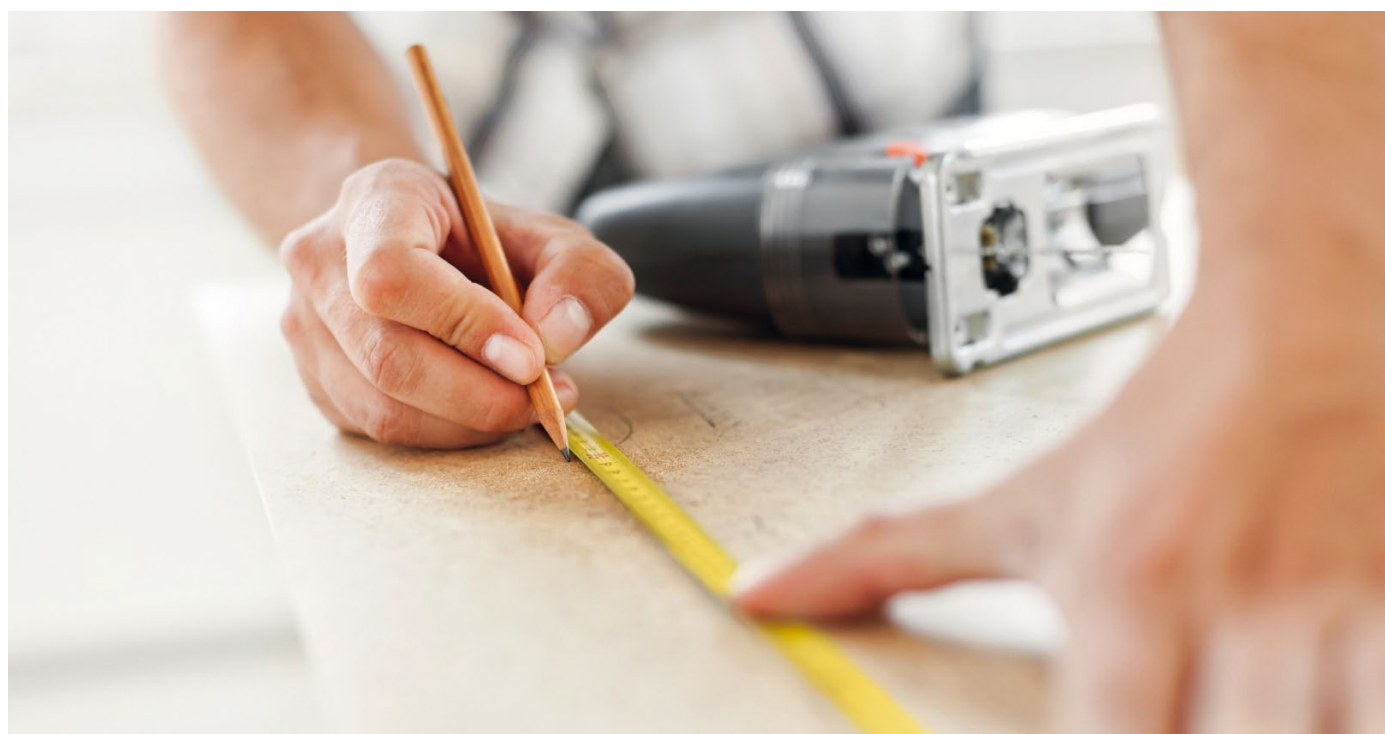
**PLUG**  
**PVC MAXI**  
with twin earthing system  
SCHUKO and  
french/belgian standards  
splash-proof IP44

COLOUR	ITEM NO.	WEIGHT g / EACH	PU
grey	1428160	56	20
white	1428180	56	20
yellow	1428150	56	20



**CONNECTOR**  
**PVC MAXI**

COLOUR	ITEM NO.	WEIGHT g / EACH	PU
grey	1478060	92	10
white	1478080	92	10
yellow	1478050	92	10





**PLUG**

COLOUR	ITEM NO.	WEIGHT g/EACH	PU
black	1116100	27	50
white	1116110	27	50



**ANGLE PLUG**

with twin earthing system  
SCHUKO and french/belgian standards

COLOUR	ITEM NO.	WEIGHT g/EACH	PU
black	1400390	35	20
white	1400380	35	20



**ANGLE PLUG**

COLOUR	ITEM NO.	WEIGHT g/EACH	PU
black	1107100	34	50
white	1107110	34	50



**CONNECTOR**

COLOUR	ITEM NO.	WEIGHT g/EACH	PU
black	1176100	31	20
white	1176110	31	20



**ADAPTER**

fibre glass reinforced contact support. plug side with twin earthing system · SCHUKO and french/belgian standards

COLOUR	ITEM NO.	WEIGHT g/EACH	PU
black	1115000	76	10
white	1115010	76	10



**ANGLE PLUG**

can be switched off 16 A~ with twin earthing system SCHUKO and french/belgian standards

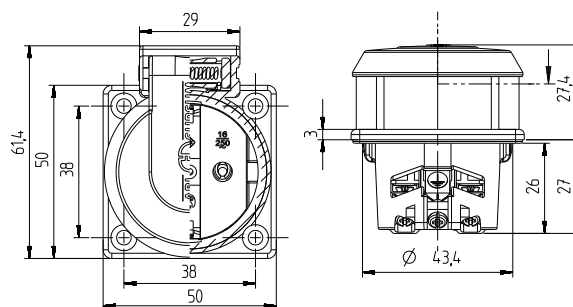
COLOUR	ITEM NO.	WEIGHT g/EACH	PU
white	1001075	72	10



**SOCKET OUTLET**

Thermoplastic  
flush mounting

COLOUR	ITEM NO.	WEIGHT g/EACH	PU
blue	1561050	53	100
black	1561000	53	100
red	1561040	53	100
yellow	1561030	53	100
grey	1561060	53	100



**SOCKET OUTLET WITH SHUTTER**

Thermoplastic  
flush mounting

COLOUR	ITEM NO.	WEIGHT g/EACH	PU
blue	1562050	55	100



**WALL-MOUNTED SOCKET OUTLET**

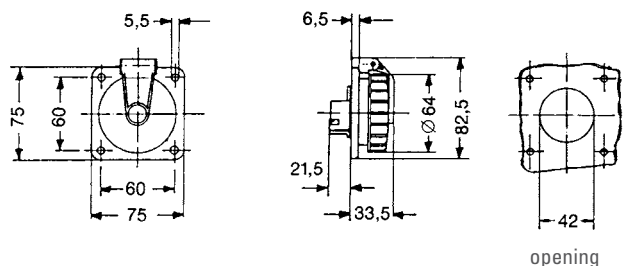
with 2 x M20 screw connection

COLOUR	ITEM NO.	WEIGHT g/EACH	PU
blue ○	1977751	180	5
blue ○	1977951	180	5



**PANEL-MOUNTED SOCKET**

COLOUR	ITEM NO.	WEIGHT g/EACH	PU
blue	1987951	90	5



# SCHUKO PRO LINE STANDARD SOCKET OUTLETS

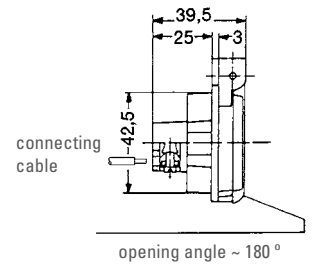
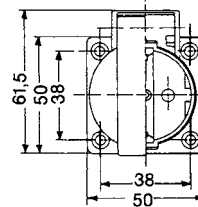
2-pole +  $\oplus$ , 16 A 250 V, acc. to DIN 49440 and IEC 60884, with screw terminals



## SOCKET OUTLET

thermoplastic  
flush mounting IP54

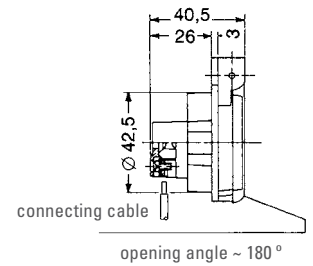
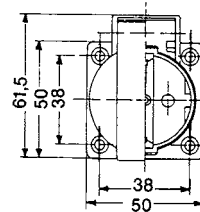
COLOUR	ITEM NO.	WEIGHT g/EACH	PU
black	1461000	38	100
red	1461040	38	100
blue	1461050	38	100
grey	1461060	38	100



## SOCKET OUTLET

thermoplastic  
flush mounting IP54

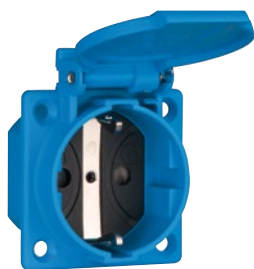
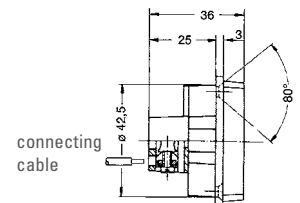
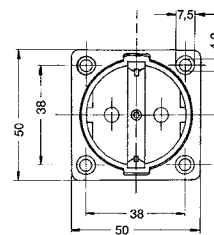
COLOUR	ITEM NO.	WEIGHT g/EACH	PU
black	1461100	38	100
red	1461140	38	100
blue	1461150	38	100
grey	1461160	38	100



## SOCKET OUTLET

thermoplastic  
flush mounting

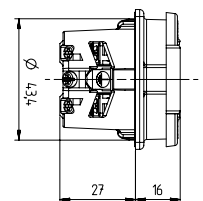
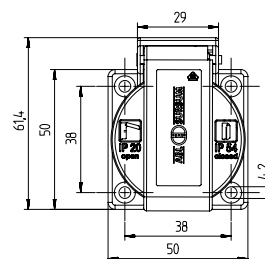
COLOUR	ITEM NO.	WEIGHT g/EACH	PU
black	1461300	29	100
blue	1461350	29	100
grey	1461360	29	100



## SOCKET OUTLET WITH SHUTTER

thermoplastic  
flush mounting IP54

COLOUR	ITEM NO.	WEIGHT g/EACH	PU
blue	1662050	53	100





**COVER WITH HINGED LID  
STAINLESS STEEL, MATT**

drip-proof IP41

ITEM NO.	WEIGHT g/EACH	PU
1471ESM	315	1



**COVER WITH HINGED LID  
PLATINUM, MATT**

drip-proof IP41

ITEM NO.	WEIGHT g/EACH	PU
1471PLM	315	1



**COVER WITH HINGED LID  
BRASS, MATT**

drip-proof IP41

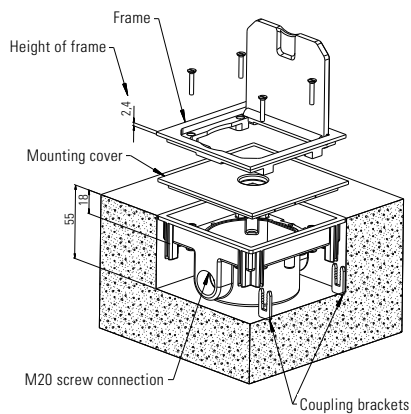
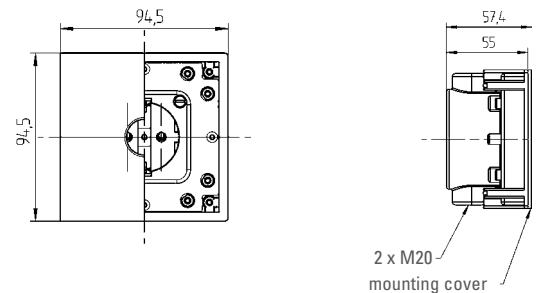
ITEM NO.	WEIGHT g/EACH	PU
1471MSM	315	1



**BASE SCHUKO**

thermoplastic  
with SCHUKO socket outlet  
with two M20

ITEM NO.	WEIGHT g/EACH	PU
1471601	125	1



Simple and safe connection with coupling brackets.



**COVER WITH HINGED LID  
STAINLESS STEEL, MATT**

drip-proof IP41

ITEM NO.	WEIGHT g / EACH	PU
1632ESM	498	1



**COVER WITH HINGED LID  
PLATINUM, MATT**

drip-proof IP41

ITEM NO.	WEIGHT g / EACH	PU
1632PLM	498	1



**COVER WITH HINGED LID  
BRASS, MATT**

drip-proof IP41

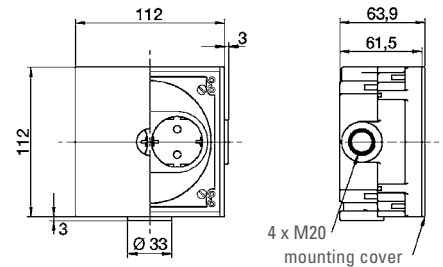
ITEM NO.	WEIGHT g / EACH	PU
1632MSM	498	1



**BASE SCHUKO**

thermoplastic  
with double SCHUKO socket outlet  
with four M20

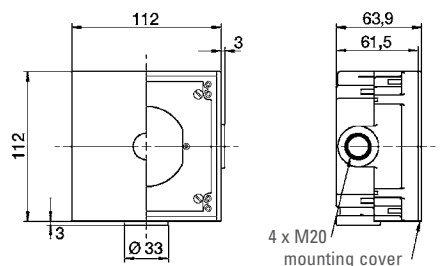
ITEM NO.	WEIGHT g / EACH	PU
1632602	281	1



**HOUSING BASE**

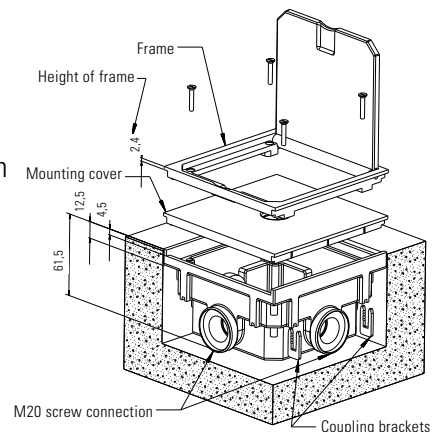
thermoplastic  
with four M20

ITEM NO.	WEIGHT g / EACH	PU
1632500	187	1



All standard socket outlets with an 80 mm cover and support ring fastening available for installation engineering, communication and telecommunications can be mounted into the 1632500 enclosure.

Simple and safe connection with coupling brackets.





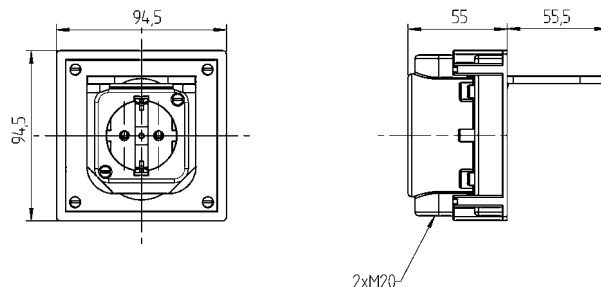


### SOCKET OUTLET MINI

drip-proof IP41,  
cover with hinged lid from  
aluminium die-cast,  
base made of thermoplastic  
with two M20

- with shutter (1471460)
- without shutter (1471461)

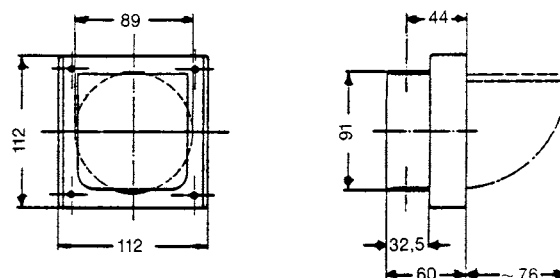
COLOUR	ITEM NO.	WEIGHT g/EACH	PU
grey	1471460	301	1
grey	1471461	301	1



### DOUBLE SOCKET OUTLET MAXI

drip-proof IP41,  
cover with hinged lid and base,  
cover made from aluminium  
die-cast, with two M20

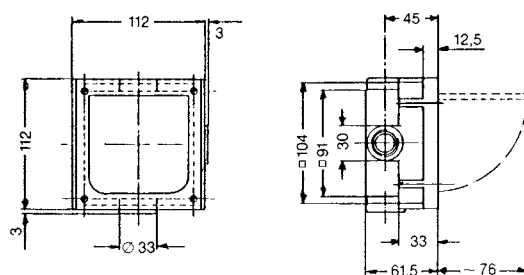
COLOUR	ITEM NO.	WEIGHT g/EACH	PU
grey	1632490	575	1



### HOUSING MAXI

drip-proof IP41,  
cover with hinged lid from  
aluminium die-cast,  
base made of thermoplastic  
with four M20

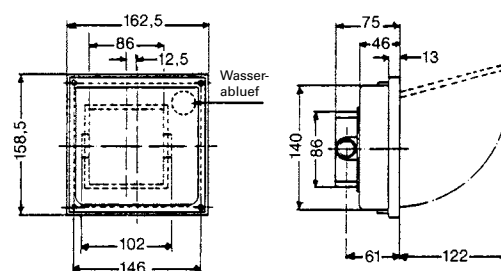
COLOUR	ITEM NO.	WEIGHT g/EACH	PU
grey	1632497	375	1



### SOCKET OUTLET MAXI

watertight to IP66,  
cover with hinged lid from  
aluminium die-cast,  
base made of thermoplastic  
with two M20

COLOUR	ITEM NO.	WEIGHT g/EACH	PU
grey	1471360	740	1



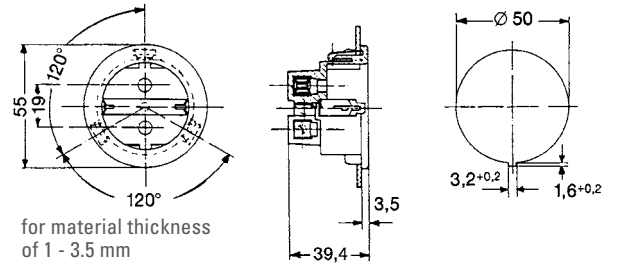
If unit is floor mounted, the knockout in the base should be used as an outflow in the event of water seeping in.



### SOCKET OUTLET

thermoplastic  
quick mounting with steel springs

COLOUR	ITEM NO.	WEIGHT g/EACH	PU
black	1101000	31	100
white	1101010	31	100



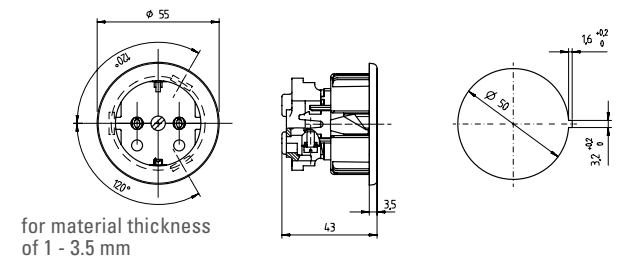
for material thickness of 1 - 3.5 mm



### SOCKET OUTLET WITH SHUTTER

thermoplastic  
quick mounting with steel springs

COLOUR	ITEM NO.	WEIGHT g/EACH	PU
white	1101210	33	100



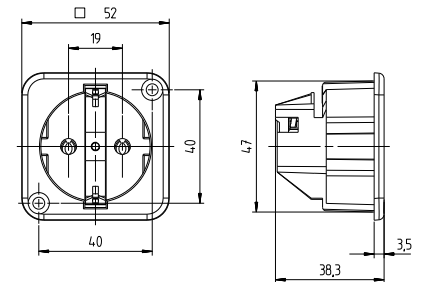
for material thickness of 1 - 3.5 mm



### SOCKET OUTLET

thermoplastic  
flush mounting, suitable for installation in BOWAmini

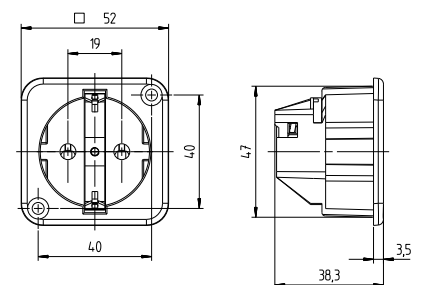
COLOUR	ITEM NO.	WEIGHT g/EACH	PU
white	1111810	32	100



### SOCKET OUTLET WITH SHUTTER

thermoplastic  
flush mounting, suitable for installation in BOWAmini

COLOUR	ITEM NO.	WEIGHT g/EACH	PU
white	1111710	33	100





### SURFACE-MOUNTED SOCKET OUTLET

COLOUR	ITEM NO.	WEIGHT g/EACH	PU
white	1491010	79	10



### BASE PLATE

for 1491010

COLOUR	ITEM NO.	WEIGHT g/EACH	PU
white	1491008	8	10



### SURFACE-MOUNTED DOUBLE SOCKET OUTLET

COLOUR	ITEM NO.	WEIGHT g/EACH	PU
white	1492010	128	10



### BASE PLATE

for 1492010

COLOUR	ITEM NO.	WEIGHT g/EACH	PU
white	1492008	13	10



### SURFACE-MOUNTED TRIPLE SOCKET OUTLET

COLOUR	ITEM NO.	WEIGHT g/EACH	PU
white	1493010	197	5



### BASE PLATE

for 1493010

COLOUR	ITEM NO.	WEIGHT g/EACH	PU
white	1493008	18	10



### SURFACE-MOUNTED QUADRUPLE SOCKET OUTLET

COLOUR	ITEM NO.	WEIGHT g/EACH	PU
white	1694010	214	5
pure white	1694110	214	5



### BASE PLATE

for 1694010

COLOUR	ITEM NO.	WEIGHT g/EACH	PU
white	0004060	32	10

# ACCESSORIES

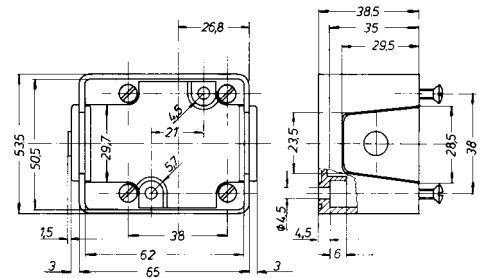
## SOCKET OUTLETS



### SURFACE-MOUNTED HOUSING

for socket outlet 1461, 1662  
thermoplastic

COLOUR	ITEM NO.	WEIGHT g / EACH	PU
black	1461007	49	10



### MOUNTING PLATE

for surface-mounted housing  
for snapping onto DIN rail  
acc. to DIN EN 60715 35 mm

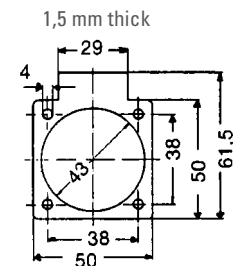
ITEM NO.	WEIGHT g / EACH	PU
1461SB	14	100



### RUBBER SEAL

for socket outlet  
1461, 1462,  
CZ, SEV, UL und BS

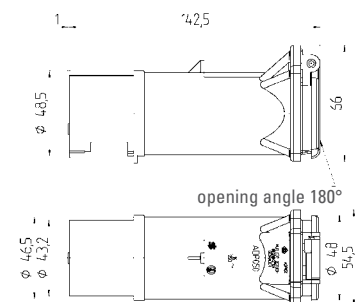
COLOUR	ITEM NO.	WEIGHT g / EACH	PU
black	8632316	3	100



### ADAPTER

CEE plug 3-pole, 16 A, 230 V,  
6h blue on  
SCHUKO socket 1461050  
splash-proof IP44

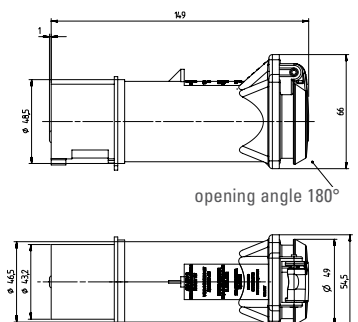
ITEM NO.	WEIGHT g / EACH	PU
ADP050	165	5



### ADAPTER WITH SHUTTER

CEE plug 3-pole, 16 A, 230 V,  
6h blue on  
socket 1462052  
with french/belgian earthing  
system  
splash-proof IP44

ITEM NO.	WEIGHT g / EACH	PU
ADP052	165	5





# LOW VOLTAGE DEVICES

## FRENCH/BELGIAN EARTHING SYSTEM

---

### PLUGS AND CONNECTORS

#### **Pro Line Standard**

Rubber	26
Three-Way Solid Rubber Connector	26

#### **Home Line Hightech**

Ultra Home	27
------------	----

#### **Home Line Standard**

Rubber	29
PVC	29

---

### SOCKET OUTLETS

#### **Pro Line Standard**

Socket Outlets	30
----------------	----

#### **Home Line Hightech**

BOWAmini	31
BOWAcompact	31

#### **Home Line Standard**

Thermoplastic	32
Without earthing system	32

**PRO LINE STANDARD**  
FRENCH/BELGIAN STANDARD

acc. to NF C61-314 french standard and NBN C61-112 belgian standard, splash-proof IP44 ⚡, for wires up to 3 x 2,5 mm<sup>2</sup>



**RUBBER PLUG**

with twin earthing system  
SCHUKO and  
french/belgian standards

COLOUR	ITEM NO.	WEIGHT g/EACH	PU
black	1149190	86	20



**RUBBER CONNECTOR  
WITH SHUTTER**

COLOUR	ITEM NO.	WEIGHT g/EACH	PU
black	1199592	170	10

**PRO LINE STANDARD**  
FRENCH/BELGIAN STANDARD

acc. to NF C61-314 french standard and NBN C61-112 belgian standard, for wires up to 3 x 2,5 mm<sup>2</sup>



**THREE-WAY SOLID  
RUBBER CONNECTOR  
WITH SHUTTER AND  
SELF-CLOSING LID**

splash-proof IP44

COLOUR	ITEM NO.	WEIGHT g/EACH	PU
black	1473597	486	5



**THREE-WAY SOLID  
RUBBER CONNECTOR**

splash-proof IP44

COLOUR	ITEM NO.	WEIGHT g/EACH	PU
black	1473292	486	5



**THREE-WAY SOLID  
RUBBER CONNECTOR  
WITH SHUTTER**

with voltage indicator ⊗

COLOUR	ITEM NO.	WEIGHT g/EACH	PU
black	1473692	383	5

# HOME LINE HIGHTECH

## FRENCH/BELGIAN STANDARD

### ULTRA HOME

2-pole +  $\oplus$ , 16 A 250 V, acc. to DIN 49440/441 and IEC 60884, NF C61-314 french standard and NBN C61-112 belgian standard, splash-proof IP44, for wires up to 3 x 2,5 mm<sup>2</sup> **ELAMID**



#### PLUG

with twin earthing system  
SCHUKO and  
french/belgian standards

COLOUR	ITEM NO.	WEIGHT g / EACH	PU
blue	1519150	78	10



#### PLUG

with twin earthing system  
SCHUKO and  
french/belgian standards

COLOUR	ITEM NO.	WEIGHT g / EACH	PU
red	1519140	78	10




#### PLUG

with twin earthing system  
SCHUKO and  
french/belgian standards

COLOUR	ITEM NO.	WEIGHT g / EACH	PU
black	1519100	78	10



**HOME LINE HIGHTECH**  
**FRENCH/BELGIAN STANDARD**  
**ULTRA HOME**

2-pole +  $\oplus$ , 16 A 250 V, acc. to NF C61-314 french standard and NBN C61-112 belgian standard, for wires up to 3 x 2,5 mm<sup>2</sup>  




**CONNECTOR WITH SHUTTER**

COLOUR	ITEM NO.	WEIGHT g / EACH	PU
blue	1579052	75	10



**CONNECTOR WITH SHUTTER**

with collar / cover  
 splash-proof IP44

COLOUR	ITEM NO.	WEIGHT g / EACH	PU
blue	1579252	98	10



**CONNECTOR WITH SHUTTER**

COLOUR	ITEM NO.	WEIGHT g / EACH	PU
red	1579042	75	10



**CONNECTOR WITH SHUTTER**

with collar / cover  
 splash-proof IP44

COLOUR	ITEM NO.	WEIGHT g / EACH	PU
red	1579242	98	10



**CONNECTOR WITH SHUTTER**

COLOUR	ITEM NO.	WEIGHT g / EACH	PU
black	1579002	75	10



**CONNECTOR WITH SHUTTER**

with collar / cover  
 splash-proof IP44

COLOUR	ITEM NO.	WEIGHT g / EACH	PU
black	1579202	98	10

## HOME LINE STANDARD

### FRENCH/BELGIAN STANDARD

acc. to NF C61-314 french standard, NBN C61-112 belgian standard and IEC 60884, for wires up to 3 x 2,5 mm<sup>2</sup>



#### RUBBER PLUG

with twin earthing system  
SCHUKO and  
french/belgian standards  
splash-proof IP44

COLOUR	ITEM NO.	WEIGHT g / EACH	PU
black	1419190	64	20



#### RUBBER CONNECTOR

COLOUR	ITEM NO.	WEIGHT g / EACH	PU
black	1479091	117	10



#### RUBER CONNECTOR WITH SHUTTER

COLOUR	ITEM NO.	WEIGHT g / EACH	PU
black	1479092	117	10



#### RUBBER CONNECTOR WITH SHUTTER

splash-proof IP44

COLOUR	ITEM NO.	WEIGHT g / EACH	PU
black	1479291	166	10



#### RUBER CONNECTOR WITH SHUTTER

splash-proof IP44

COLOUR	ITEM NO.	WEIGHT g / EACH	PU
black	1479292	166	10

## HOME LINE STANDARD

### FRENCH/BELGIAN STANDARD

acc. to NF C61-314 french standard, NBN C61-112 belgian standard and IEC 60884, for wires up to 3 x 2,5 mm<sup>2</sup>



#### PLUG

PVC, with twin earthing system  
SCHUKO and  
french/belgian standards

COLOUR	ITEM NO.	WEIGHT g / EACH	PU
grey	1418060	40	20
white	1418080	40	20
black	1418000	40	20



#### CONNECTOR WITH SHUTTER

PVC

COLOUR	ITEM NO.	WEIGHT g / EACH	PU
grey	1679062	83	10
white	1679082	83	10
black	1679002	83	10

# PRO LINE STANDARD

## FRENCH/BELGIAN STANDARD

acc. to NF C61-314 french standard and  
NBN C61-112 belgian standard, IP54 ⬠

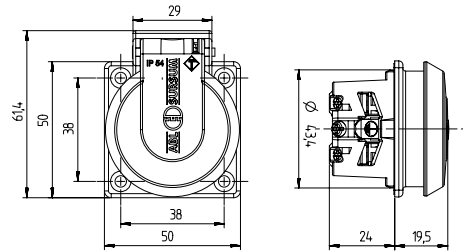


### SOCKET OUTLET WITH SHUTTER\*

thermoplastic  
flush mounting IP54 ⬠

COLOUR	ITEM NO.	WEIGHT g/EACH	PU
black	1662002	53	100
blue	1662052	53	100
grey	1662062	53	100

\*available from November 2014



**HOME LINE HIGHTECH**  
 FRENCH/BELGIAN STANDARD  
 BOWAmini

94 x 94 mm



**COVER WITH HINGED LID  
 STAINLESS STEEL, MATT**

drip-proof IP41

ITEM NO.	WEIGHT g / EACH	PU
1471ESM	315	1



**COVER WITH HINGED LID  
 PLATINUM, MATT**

drip-proof IP41

ITEM NO.	WEIGHT g / EACH	PU
1471PLM	315	1



**COVER WITH HINGED LID  
 BRASS, MATT**

drip-proof IP41

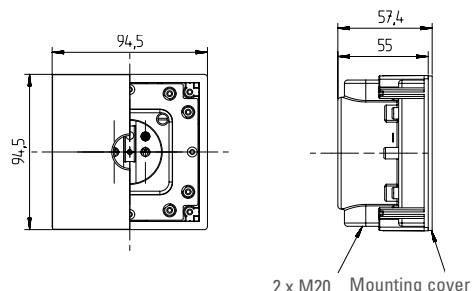
ITEM NO.	WEIGHT g / EACH	PU
1471MSM	315	1



**BASE SCHUKO  
 WITH SHUTTER**

thermoplastic  
 with SCHUKO socket outlet  
 with two M20

ITEM NO.	WEIGHT g / EACH	PU
1471602	125	1



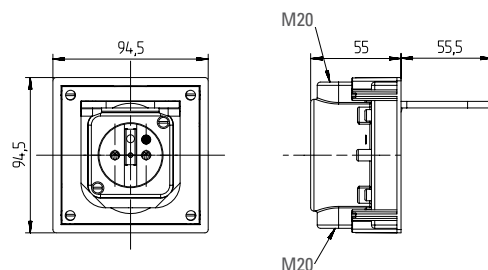
**HOME LINE HIGHTECH**  
 FRENCH/BELGIAN STANDARD  
 BOWAcompact



**SOCKET OUTLET MINI  
 WITH SHUTTER**

drip-proof IP41,  
 cover with hinged lid from  
 aluminium die-cast,  
 base made of thermoplastic  
 with two M20

COLOUR	ITEM NO.	WEIGHT g / EACH	PU
grey	1471462	301	1

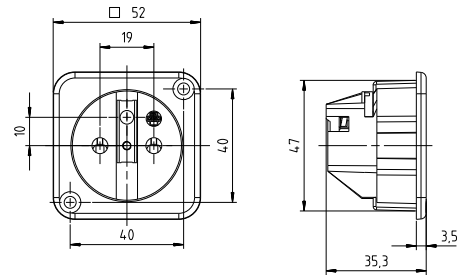




**SOCKET OUTLET  
WITH SHUTTER**

thermoplastic  
flush mounting  
suitable for installation in  
BOWA.94

COLOUR	ITEM NO.	WEIGHT g/EACH	PU
white	1111712	33	100



**SOCKET OUTLET  
WITHOUT EARTHING SYSTEM**



**SURFACE-MOUNTED  
QUADRUPLE SOCKET OUTLET**

without earthing system

COLOUR	ITEM NO.	WEIGHT g/EACH	PU
white	1804010	159	5
pure white	1804110	159	5







# LOW VOLTAGE DEVICES

## SWISS SYSTEM

---

### PLUGS AND CONNECTORS

**Pro Line Hightech** 36

---

### SOCKET OUTLETS

**Pro Line Hightech** 38

# PRO LINE HIGHTECH SWISS SYSTEM

acc. to SEV type 23, 25, splash-proof IP44



## PLUG 16 A

acc. to SEV 5934 type 23

COLOUR	ITEM NO.	WEIGHT g/EACH	PU
dark blue	SEV23S	80	20



## CONNECTOR 16 A

with collar and cover  
acc. to SEV 5934 type 23

COLOUR	ITEM NO.	WEIGHT g/EACH	PU
dark blue	SEV23K2	132	10



## PLUG 16 A

acc. to SEV 5932 type 25

COLOUR	ITEM NO.	WEIGHT g/EACH	PU
red	SEV25S	98	20



## CONNECTOR 16 A

with collar and cover  
acc. to SEV 5932 type 25

COLOUR	ITEM NO.	WEIGHT g/EACH	PU
red	SEV25K2	138	10



**PRO LINE HIGHTECH**  
SWISS SYSTEM

acc. to SEV type 12, 13, 15, splash-proof IP44



**PLUG 10 A**

acc. to SEV 6534 type 12

COLOUR	ITEM NO.	WEIGHT g/EACH	PU
light blue	SEV12S2	79	20



**CONNECTOR 10 A**

with collar and cover  
acc. to SEV 6535 type 13

COLOUR	ITEM NO.	WEIGHT g/EACH	PU
light blue	SEV13K2	132	10



**PLUG 10 A**

acc. to SEV 6532 type 15

COLOUR	ITEM NO.	WEIGHT g/EACH	PU
orange	SEV15S	95	20



**CONNECTOR 10 A**

with collar and cover  
acc. to SEV 6532 type 15

COLOUR	ITEM NO.	WEIGHT g/EACH	PU
orange	SEV15K2	135	10

**PRO LINE HIGHTECH**  
SWISS SYSTEM

acc. to SEV type 13



**THREE-WAY SOLID RUBBER  
CONNECTOR 10 A**

compliant with SEV 6535 Type 13  
with voltage indicator and  
self-closing lid · splash-proof IP54

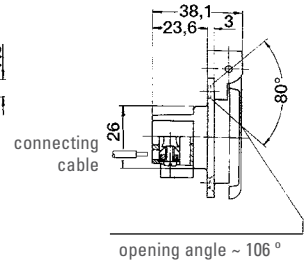
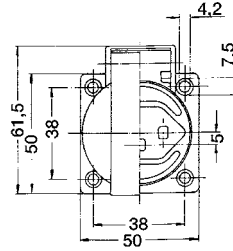
COLOUR	ITEM NO.	WEIGHT g/EACH	PU
blue	SEV313K	486	5



**SOCKET OUTLET 250 V / 16 A**

thermoplastic  
flush mounting  
acc. to SEV 5934 type 23  
with seal in hinged lid

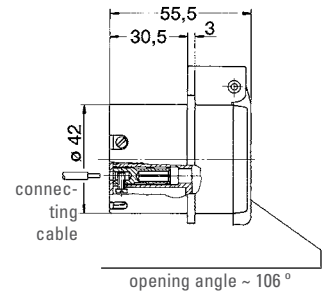
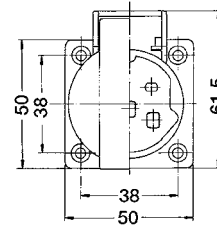
COLOUR	ITEM NO.	WEIGHT g/EACH	PU
grey/ blue	1461965	40	100



**SOCKET OUTLET 400 V / 16 A**

thermoplastic  
flush mounting  
acc. to SEV 5932 type 25  
with seal in hinged lid

COLOUR	ITEM NO.	WEIGHT g/EACH	PU
grey/ red	SEV1148	65	20

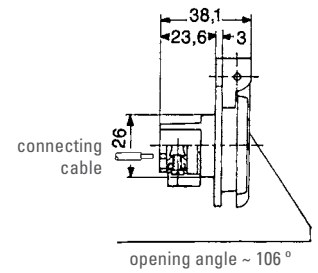
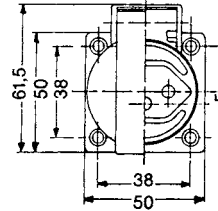




**SOCKET OUTLET 250 V / 10 A**

thermoplastic  
flush mounting  
acc. to SEV 6535 type 13

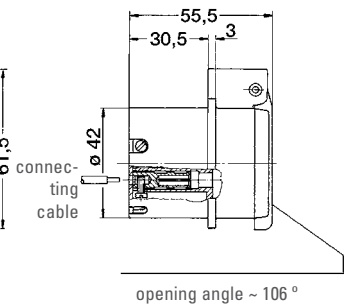
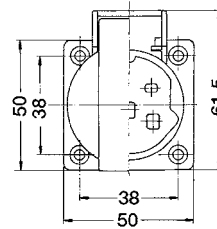
COLOUR	ITEM NO.	WEIGHT g / EACH	PU
blue	<b>1461005</b>	37	20
black	<b>1461006</b>	37	20
grey	<b>1461066</b>	37	20

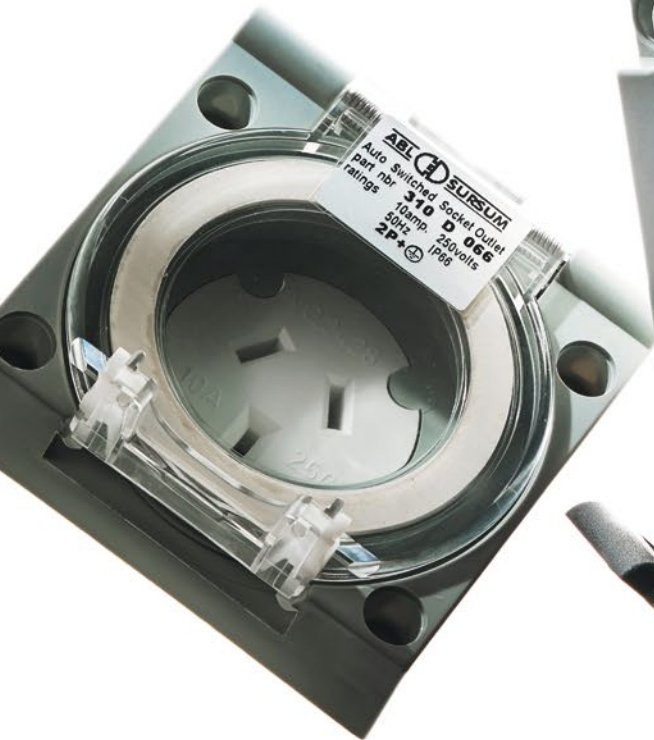
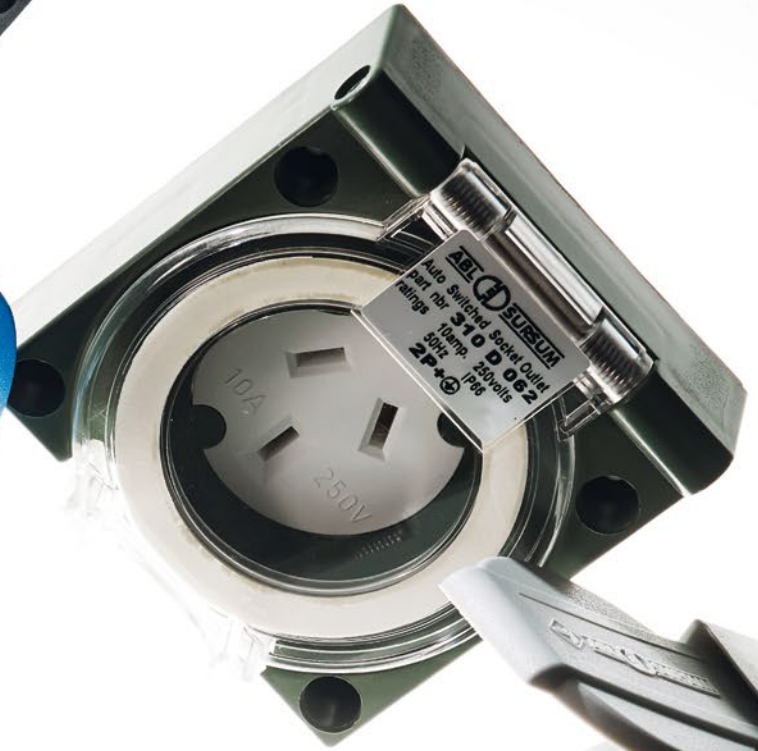


**SOCKET OUTLET 400 V / 10 A**

thermoplastic  
flush mounting  
acc. to SEV 6532 type 15

COLOUR	ITEM NO.	WEIGHT g / EACH	PU
grey	<b>SEV-100</b>	57	20





# **LOW VOLTAGE DEVICES**

## INTERNATIONAL

---

### **SOCKET OUTLETS**

**Pro Line Hightech**

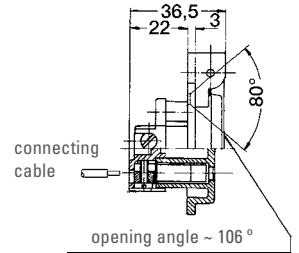
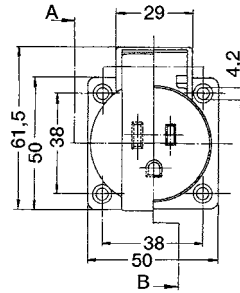
42



**SOCKET OUTLET 125 V / 15 A  
1-POL. + N + ⊕**

thermoplastic  
USA: acc. to UL 498/NEMA 5-15 R  
Canada: acc. to CSA C22.2 Nr.:42

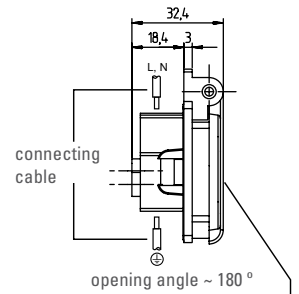
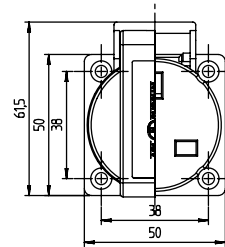
COLOUR	ITEM NO.	WEIGHT g/EACH	PU
black	UL12500	45	100
blue	UL12505	45	100
grey	UL12506	45	100



**SOCKET OUTLET 250V / 13 A  
ACC. TO BRITISH STANDARD 1363**

thermoplastic  
flush mounting IP54

COLOUR	ITEM NO.	WEIGHT g/EACH	PU
black	BS13630	38	100

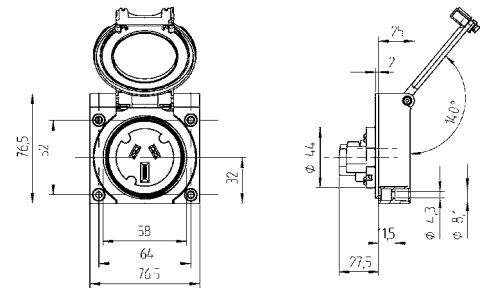




**PANEL-MOUNTED SOCKET  
OUTLET · 3-POLE / 250V**

colour green  
water jet protected IP66

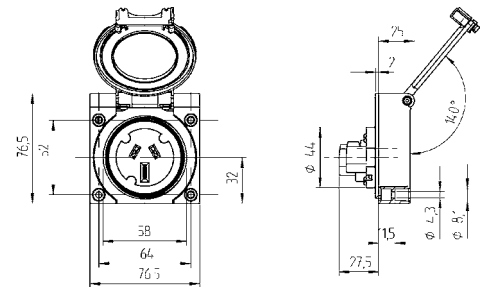
AMPERE	ITEM NO.	WEIGHT g / EACH	PU
10 A	<b>310D062</b>	119	10
15 A	<b>315D062</b>	119	10



**PANEL-MOUNTED SOCKET  
OUTLET · 3-POLE / 250V**

colour grey  
water jet protected IP66

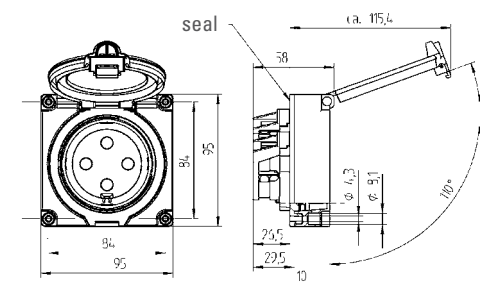
AMPERE	ITEM NO.	WEIGHT g / EACH	PU
10 A	<b>310D066</b>	119	10
15 A	<b>315D066</b>	119	10
20 A	<b>320D066</b>	119	10



**PANEL-MOUNTED SOCKET  
OUTLET · 4-POLE / 500V**

colour grey  
water jet protected IP66

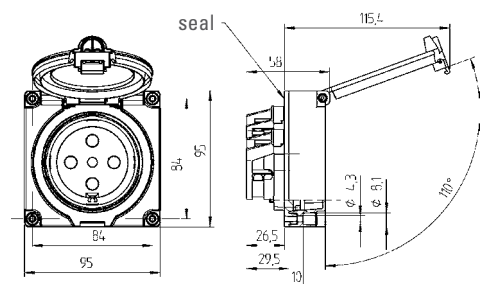
AMPERE	ITEM NO.	WEIGHT g / EACH	PU
32 A	<b>432D060</b>	183	10
40 A	<b>440D060</b>	183	10
50 A	<b>450D060</b>	183	10



**PANEL-MOUNTED SOCKET  
OUTLET · 5-POLE / 500V**

colour grey  
water jet protected IP66

AMPERE	ITEM NO.	WEIGHT g / EACH	PU
32 A	<b>532D060</b>	193	10
50 A	<b>550D060</b>	193	10





# **LOW VOLTAGE DEVICES**

OUTLET BOXES,  
PERILEX, ETHERNET

---

## **OUTLET BOXES**

**Home Line Standard** 46

---

## **PERILEX PLUG CONNECTIONS**

**Pro Line Standard** 47

---

## **ETHERNET PLUG CONNECTIONS**

**Pro Line Hightech** 48



### OUTLET BOX

thermoplastic · for surface mounting  
cover with snap lock  
terminals: 5 x 2,5 to\* 6 mm<sup>2</sup>

COLOUR	ITEM NO.	WEIGHT g/EACH	PU
white	2505010	80	10



### OUTLET BOX

thermoplastic · for flush mounting  
and surface mounting · cover with  
snap lock · terminals: 5 x 2,5 to\* 6 mm<sup>2</sup>

COLOUR	ITEM NO.	WEIGHT g/EACH	PU
white	2505110	80	10



### OUTLET BOX

thermoplastic · for flush mounting  
and surface mounting  
claw bracket can be snapped out  
cover with snap lock  
terminals: 5 x 2,5 to\* 6 mm<sup>2</sup>

COLOUR	ITEM NO.	WEIGHT g/EACH	PU
white	2505210	90	10



### BASE PLATE IP44

with two cable entries  
for outlet boxes 2505

COLOUR	ITEM NO.	WEIGHT g/EACH	PU
white	2505018	32	10



### OUTLET BOX

thermoplastic · for flush mounting  
flat version · cover with snap lock  
terminals: 5 x 2,5 mm<sup>2</sup>  
**extra flat – only 11 mm**

COLOUR	ITEM NO.	WEIGHT g/EACH	PU
white	2506110	61	10



### THREE-CHAMBER OUTLET BOX

for flush mounting and surface mounting  
dowel fastening  
terminals: 5 x 2,5 to\* 6 mm<sup>2</sup> /  
7 x 2,5 mm<sup>2</sup>

COLOUR	ITEM NO.	WEIGHT g/EACH	PU
white	2518610	166	5

\* if conductor section is > 5 x 2,5 mm<sup>2</sup>  
use additional strain relief.



**PLUG**

thermoset

COLOUR	ITEM NO.	WEIGHT g/EACH	PU
white	2201110	99	10



**CONNECTOR**

thermoset

COLOUR	ITEM NO.	WEIGHT g/EACH	PU
white	2206110	149	10



**ANGLE PLUG**

thermoset

COLOUR	ITEM NO.	WEIGHT g/EACH	PU
white	2407110	113	10



**FLUSH-MOUNTED SOCKET OUTLET**

thermoset

COLOUR	ITEM NO.	WEIGHT g/EACH	PU
white	2421110	142	10



**FLUSH-MOUNTED SOCKET OUTLET**

thermoset  
splash-proof IP44  
with in-wall box

COLOUR	ITEM NO.	WEIGHT g/EACH	PU
white	2451510	234	10



**SURFACE-MOUNTED SOCKET OUTLET**

thermoset

COLOUR	ITEM NO.	WEIGHT g/EACH	PU
white	2491010	136	10



**SURFACE-MOUNTED SOCKET OUTLET**

thermoset  
splash-proof IP44

COLOUR	ITEM NO.	WEIGHT g/EACH	PU
grey	2441860	271	5

# PRO LINE HIGHTECH

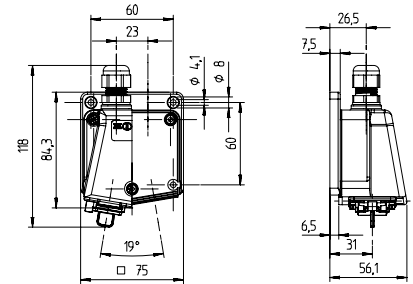
## INDUSTRIAL ETHERNET



### PANEL-MOUNTED SOCKET IP67

access side: IDC insulation-piercing plug technology · outgoing side:  
2 x RJ45 Cat.6 modules 8(8)

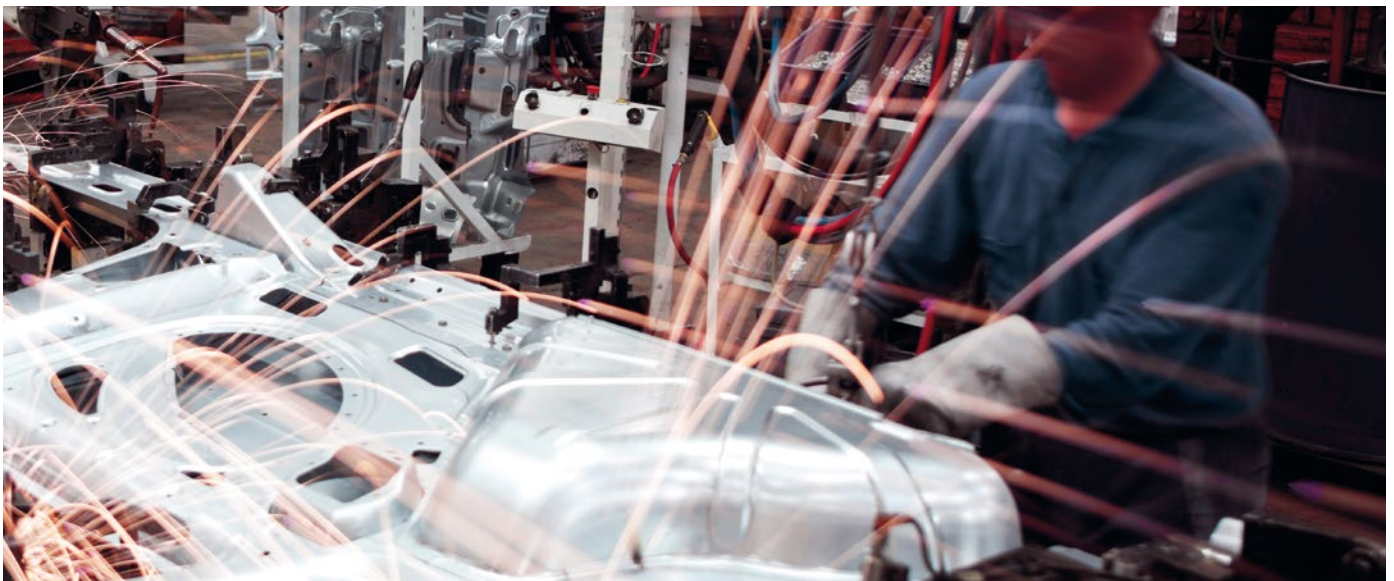
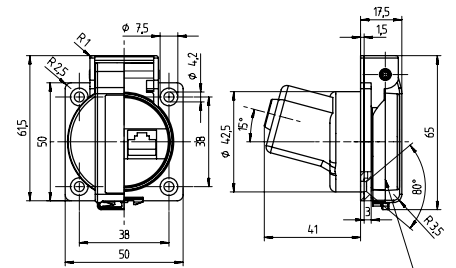
ITEM NO.	WEIGHT g / EACH	PU
DG-RJ45	160	10



### SOCKET OUTLET IP55

access side: IDC insulation-piercing plug technology · outgoing side:  
1 x RJ45 Cat.6 module 8(8) RJ45K13  
2 x RJ45 Cat.6 modules 8(8) RJ45K23

ITEM NO.	WEIGHT g / EACH	PU
RJ45K13	70	10
RJ45K23	100	10



# ITEM NUMBER DIRECTORY

ITEM NO.	PAGE
0004060	22
1001075	14
1101000	21
1101010	21
1101210	21
1107100	14
1107110	14
1111712	32
1111810	21
1115000	14
1115010	14
1116100	14
1116110	14
1129190	8
1149190	26
1149190	9
1149290	9
1169090	9
1169290	9
1173503	7
1173543	7
1173563	7
1176100	14
1176110	14
1189090	8
1189290	8
1199090	9
1199290	9
1199592	26
1400380	14
1400390	14
1418000	13
1418000	29
1418050	13
1418060	13
1418060	29
1418080	13
1418080	29
1419140	12
1419170	12
1419190	12
1419190	29
1428150	13
1428160	13
1428180	13
1429190	12
1461000	16
1461005	39
1461006	39
1461007	23
1461040	16
1461050	16
1461060	16
1461066	39
1461100	16
1461140	16
1461150	16
1461160	16
1461300	16

ITEM NO.	PAGE
1461350	16
1461360	16
1461965	38
1461SB	23
1471360	20
1471460	20
1471461	20
1471462	31
1471601	17
1471602	31
1471ESM	17
1471ESM	31
1471MSM	17
1471MSM	31
1471PLM	17
1471PLM	31
1473190	8
1473292	26
1473597	26
1473692	26
1478050	13
1478060	13
1478080	13
1479040	12
1479070	12
1479090	12
1479091	29
1479092	29
1479291	29
1479292	29
1489090	12
1491008	22
1491010	22
1492008	22
1492010	22
1493008	22
1493010	22
1519100	10
1519100	27
1519140	10
1519140	27
1519150	10
1519150	27
1529100	6
1529140	6
1529160	6
1561000	15
1561030	15
1561040	15
1561050	15
1561060	15
1562050	15
1579000	11
1579002	28
1579040	11
1579042	28
1579050	11
1579052	28
1579100	11

ITEM NO.	PAGE
1579140	11
1579150	11
1579200	11
1579202	28
1579240	11
1579242	28
1579250	11
1579252	28
1579300	11
1579340	11
1579350	11
1589200	6
1589240	6
1589260	6
1632490	20
1632497	20
1632500	18
1632602	18
1632ESM	18
1632MSM	18
1632PLM	18
1662002	30
1662050	16
1662052	30
1662062	30
1679000	13
1679002	29
1679050	13
1679060	13
1679062	29
1679080	13
1679082	29
1694010	22
1694110	22
1804010	32
1804110	32
1976850	7
1977751	15
1977951	15
1979850	7
1987951	15
1989850	7
2201110	47
2206110	47
2407110	47
2421110	47
2441860	47
2451510	47
2491010	47
2505010	46
2505018	46
2505110	46
2505210	46
2506110	46
2518610	46
310D062	43
310D066	43
315D062	43
315D066	43

ITEM NO.	PAGE
320D066	43
432D060	43
440D060	43
450D060	43
532D060	43
550D060	43
8632316	23
ADP050	23
ADP052	23
BS13630	42
DG-RJ45	48
RJ45K13	48
RJ45K23	48
SEV-100	39
SEV1148	38
SEV12S2	37
SEV13K2	37
SEV15K2	37
SEV15S	37
SEV23K2	36
SEV23S	36
SEV25K2	36
SEV25S	36
SEV313K	37
UL12500	42
UL12505	42
UL12506	42





Connecting power.  
Protecting power.  
Charging power.  
Made in Germany.



---

ABL SURSUM  
Bayerische Elektrozubehör GmbH & Co. KG

Ottensooser Straße 22    Postfach 10 02 47    Telefon +49 (0) 9123 188-0    info@abl-sursum.com  
91207 Lauf / Pegnitz    91192 Lauf / Pegnitz    Telefax +49 (0) 9123 188-188    www.abl-sursum.com



0000014 / 02.2015