

CONTACTOR, AC-3 22 KW/400 V, AC 208 V,
50/60 HZ, 3-POLE, SIZE S2,
SCREW CONNECTION

General technical data:

| | | |
|---|----|-------------|
| product brand name | | SIRIUS |
| Size of the contactor | | S2 |
| Protection class IP / on the front | | IP20 |
| Degree of pollution | | 3 |
| Installation altitude / at a height over sea level / maximum | m | 2,000 |
| Ambient temperature / during operating | °C | -25 ... +60 |
| Mechanical operating cycles as operating time | | |
| <ul style="list-style-type: none"> • of the contactor / typical | | 10,000,000 |
| <ul style="list-style-type: none"> • of the contactor with added auxiliary switch block / typical | | 10,000,000 |
| <ul style="list-style-type: none"> • of the contactor with added electronics-compatible auxiliary switch block / typical | | 5,000,000 |

Main circuit:

| | | |
|--|---|---|
| Number of NC contacts / for main contacts | | 0 |
| Number of NO contacts / for main contacts | | 3 |
| Operating current | | |
| <ul style="list-style-type: none"> • at AC-1 / at 400 V <ul style="list-style-type: none"> • at 40 °C ambient temperature / rated value • at 60 °C ambient temperature / rated value • at AC-3 / at 400 V / rated value • at AC-4 / at 400 V / rated value • with 1 current path / at DC-1 <ul style="list-style-type: none"> • at 24 V / rated value • at 110 V / rated value • with 2 current paths in series / at DC-1 <ul style="list-style-type: none"> • at 24 V / rated value • at 110 V / rated value • with 3 current paths in series / at DC-1 <ul style="list-style-type: none"> • at 24 V / rated value • at 110 V / rated value • with 1 current path / at DC-3 / at DC-5 <ul style="list-style-type: none"> • at 24 V / rated value | A | 60 55 50 41 55 4.5 55 25 55 55 35 |

| | | |
|--|----|--------|
| <ul style="list-style-type: none"> • at 110 V / rated value | A | 2.5 |
| <ul style="list-style-type: none"> • with 2 current paths in series / at DC-3 / at DC-5 | | |
| <ul style="list-style-type: none"> • at 24 V / rated value | A | 55 |
| <ul style="list-style-type: none"> • at 110 V / rated value | A | 25 |
| <ul style="list-style-type: none"> • with 3 current paths in series / at DC-3 / at DC-5 | | |
| <ul style="list-style-type: none"> • at 24 V / rated value | A | 55 |
| <ul style="list-style-type: none"> • at 110 V / rated value | A | 55 |
| Service power | | |
| <ul style="list-style-type: none"> • at AC-2 / at 400 V / rated value | kW | 22 |
| <ul style="list-style-type: none"> • at AC-3 / at 400 V / rated value | kW | 22 |
| <ul style="list-style-type: none"> • at AC-4 / at 400 V / rated value | W | 22,000 |
| Active power loss / per conductor / typical | W | 5 |

Control circuit:

| | | |
|--|-----|-------------|
| Type of voltage / of the controlled supply voltage | | AC |
| Control supply voltage / 1 | | |
| <ul style="list-style-type: none"> • at 50 Hz / for AC • rated value | V | 208 |
| <ul style="list-style-type: none"> • at 60 Hz / for AC • rated value | V | 208 |
| Operating range factor control supply voltage rated value / of the magnet coil | | |
| <ul style="list-style-type: none"> • at 50 Hz • for AC | | 0.8 ... 1.1 |
| <ul style="list-style-type: none"> • at 60 Hz • for AC | | 0.8 ... 1.1 |
| Apparent pull-in power / of the solenoid / for AC | V·A | 170 |
| Apparent holding power / of the solenoid / for AC | V·A | 15 |
| Inductive power factor / with the pull-in power of the coil | | 0.76 |
| Inductive power factor / with the pull-in power of the coil | | 0.35 |

Auxiliary circuit:

| | | |
|--|---|---|
| Contact reliability / of the auxiliary contacts | | 1 faulty switching per 100 million (17 V, 1 mA) |
| Number of NC contacts / for auxiliary contacts / instantaneous switching | | 0 |
| Number of NO contacts / for auxiliary contacts / instantaneous switching | | 0 |
| Operating current / of the auxiliary contacts | | |
| <ul style="list-style-type: none"> • at AC-12 / maximum | A | 10 |
| <ul style="list-style-type: none"> • at AC-15 • at 230 V | A | 6 |

- at 400 V
- at DC-12
 - at 60 V
 - at 110 V
 - at 220 V
- at DC-13
 - at 24 V
 - at 60 V
 - at 110 V
 - at 220 V

| | |
|---|-----|
| A | 3 |
| A | 6 |
| A | 3 |
| A | 1 |
| A | 10 |
| A | 2 |
| A | 1 |
| A | 0.3 |

Short-circuit:

Design of the fuse link

- for short-circuit protection of the auxiliary switch / required
- for short-circuit protection of the main circuit
 - with type of assignment 1 / required
 - at type of coordination 2 / required

fuse gL/gG: 10 A

fuse gL/gG: 160 A

fuse gL/gG: 80 A

Installation/mounting/dimensions:

Type of mounting

screw and snap-on mounting onto 35 mm standard mounting rail according to DIN EN 50022

series installation

Yes

Width

mm 55

Height

mm 112

Depth

mm 115

Distance, to be maintained, to earthed part / sideways

mm 6

Connection type:

Design of the electrical connection

- for main current circuit
- for auxiliary and control current circuit

screw-type terminals

screw-type terminals

Certificates/approvals:

General Product Approval

Functional Safety / Safety of Machinery



CCC



CSA



GOST



KETI



UL

[Type Examination](#)

Declaration of Conformity

Test Certificates



EG-Konf.

[Special Test Certificate](#)

[Type Test Certificates/Test Report](#)

Shipping Approval



ABS



BUREAU VERITAS



DNV



GL



LRS



RINA

Shipping Approval

other



RMRS

[Confirmation](#)

[other](#)

[Environmental Confirmations](#)

Further information:

Information- and Downloadcenter (Catalogs, Brochures,...)

<http://www.siemens.com/industrial-controls/catalogs>

Industry Mall (Online ordering system)

<http://www.siemens.com/industrial-controls/mall>

Cax online generator:

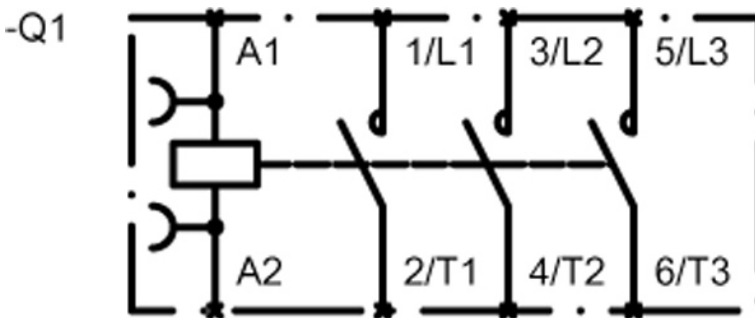
<http://www.siemens.com/cax>

Service&Support (Manuals, Certificates, Characteristics, FAQs,...)

<http://support.automation.siemens.com/WW/view/en/3RT1036-1AM20/all>

Image database (product images, 2D dimension drawings, 3D models, device circuit diagrams, ...)

http://www.automation.siemens.com/bilddb/cax_en.aspx?mlfb=3RT1036-1AM20



last change:

Jun 28, 2012