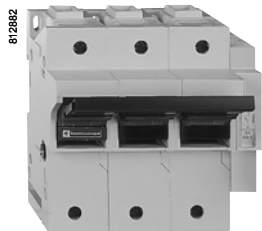




LS1 D323



LS1 D32



GK1 FK



LS1 D32

+ LA8 D324

3-pole basic blocks

Rating	Cartridge fuse size	Number of early break contacts (1)	Single-phase protection device (2)	Reference (3)	Weight kg	
Connection by spring terminals						
25 A	10 x 38	– (4)	Without	LS1 D323	0.270	
Connection by screw clamp terminals or connectors						
32 A	10 x 38	– (4)	Without	LS1 D32	0.300	
50 A	14 x 51	1	Without	GK1 EK	0.430	
			With	GK1 EV	0.470	
			2	Without	GK1 ES	0.470
			With	GK1 EW	0.510	
125 A	22 x 58	1	Without	GK1 FK	0.860	
			With	GK1 FV	0.900	
			2	Without	GK1 FS	0.900
			With	GK1 FW	0.940	

4-pole basic blocks

Connection by screw clamp terminals or connectors						
32 A	10 x 38	– (4)	Without	LS1 D32 + LA8 D324 (5)	0.300	
50 A	14 x 51	1	Without	GK1 EM	0.570	
			With	GK1 EY	0.600	
			2	Without	GK1 ET	0.610
			With	GK1 EX	0.650	
125 A	22 x 58	1	Without	GK1 FM	1.090	
			With	GK1 FY	1.130	
			2	Without	GK1 FT	1.130
			With	GK1 FX	1.160	

Fuse carriers for the North American market

25 and 30 A basic blocks: please consult your Regional Sales Office.

- (1) With 1 or 2 early break contacts to be inserted in the contactor control circuit.
- (2) Fuse carriers with single-phase protection device must be fitted with striker fuses.
- (3) LS1 D: clips directly onto a 35 mm rail or screw fixing.
GK1: clips directly onto a 35 mm rail or Telemecanique mounting plate.
- (4) Addition of add-on contact block, see page 23027/3.
- (5) Can be mounted on left-hand or right-hand side of the basic block.

Add-on contact blocks

Description	For use on	Mounting	Maximum number	Type of contacts	Sold in lots of	Unit reference	Weight kg
Instantaneous auxiliary contacts (early break contacts)	LS1 D32	Front	1	N/O + N/C	10	GV AE11	0.020
				N/O + N/O	10	GV AE20	0.020
	LS1 D323	Front	1	N/O + N/C	10	GV AE113	0.030
				N/O + N/O	10	GV AE203	0.030

Operators

For fuse carrier		For mounting on	Reference	Weight kg
Rating	Number of poles			
Side handles				
125 A	3 or 4	Right-hand side	GK1 AP07	0.300
		Left-hand side	GK1 AP08	0.300

Front handles (1)

32 - 50 - 125 A			Fitted as standard	–
-----------------	--	--	--------------------	---

External handles

32 A	3 or 4	Right-hand side	LS1 D32005 (2)	0.200
		Left-hand side	LS1 D32006	0.200
50 A	3 or 4	Right-hand side	GK1 AP05	0.180
		Left-hand side	GK1 AP06	0.180
125 A	3 or 4	Right-hand side	GK1 AP07	0.300
		Left-hand side	GK1 AP08	0.300

Padlocking devices (3)

For fuse carrier		Reference	Weight kg
Rating	Number of poles	Single-phase protection device	
32 A	3 or 4	Without	integral
50 A	3	Without	GK1 AV07
		With	GK1 AV08
	4	Without	GK1 AV08
		With	GK1 AV09

Links

Tubular links

For fuse carrier		Sold in lots of	Unit reference	Weight kg
Rating	Number of poles			
32 A	3 or 4	10	DK1 CB92 (4)	0.007
50 A	3 or 4	10	DK1 EB92 (5)	0.012
125 A	3 or 4	10	DK1 FA92 (5)	0.020

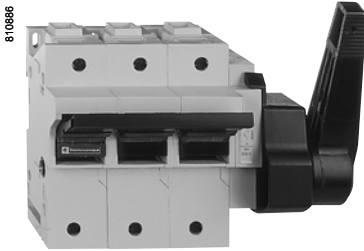
(1) Fitted as standard on 32, 50 and 125 A fuse carriers type GK1.

(2) Reference LS1 D32005 replaces reference DK1 FB005.

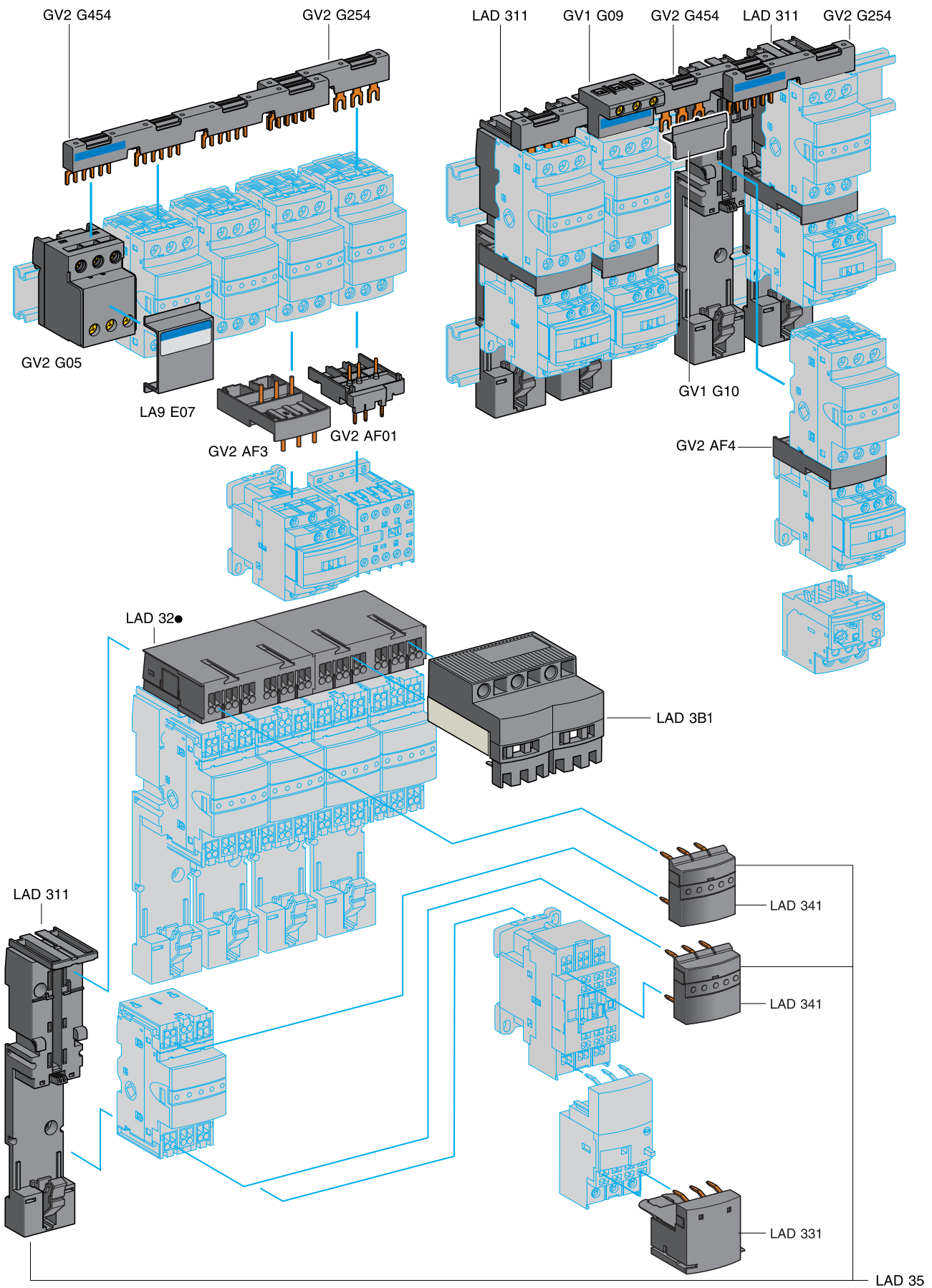
(3) For the 125 A rating, use side handles GK1 AP07 or GK1 AP08.

(4) For use on a neutral circuit, the tubular link can be interlocked with special device LA8 D25906 (sold in lots of 10).

(5) 50 and 125 A fuse carriers type GK1 are fitted with an interlocked neutral tubular link as standard.



GK1 FK + GK1 AP07



Accessories for LS1 D32 (screw clamp terminals)					
Description	Application	Sold in lots of	Unit reference	Weight kg	
Plate for mounting	LS1 D32 and contactor LC1 D09...D38 with front faces aligned	1	LAD 311	0.040	
Combination blocks	Between LS1 D32 and contactor LC1 K or LP1 K	10	GV2 AF01	0.020	
	Between LS1 D32 and contactor LC1 D09...D38	10	GV2 AF3	0.016	
	Between LS1 D32 mounted on LAD 311 and contactor LC1 D09...D38	10	GV2 AF4	0.016	
Description	Application	Pitch mm	Reference	Weight kg	
Sets of 3-pole 63 A busbars	2 tap-offs	45	GV2 G245	0.036	
		54	GV2 G254	0.038	
		72	GV2 G272	0.042	
	3 tap-offs	45	GV2 G345	0.058	
		54	GV2 G354	0.060	
	4 tap-offs	45	GV2 G445	0.077	
		54	GV2 G454	0.085	
		72	GV2 G472	0.094	
	5 tap-offs	54	GV2 G554	0.100	
Description	Application	Sold in lots of	Unit reference	Weight kg	
Protective end cover	For unused busbar outlets	5	GV1 G10	0.005	
Terminal blocks	For supply to one or more	1	GV1 G09	0.040	
Connection from the top	GV2 G busbar sets				
Cover for terminal block	For mounting in modular panels	10	LA9 E07	0.005	
Padlocking device	For use with up to 4 padlocks (not supplied) Ø 6 mm shank max	1	GV2 V03	0.092	
Accessories for LS1 D323 (spring terminals)					
Description	Application		Reference	Weight kg	
Plate for mounting	LS1 D323 and contactor LC1 D09...D38 with front faces aligned		LAD 311	0.040	
Description	Extension by	Number of starters	Reference	Weight kg	
Power splitter box, 63 A	LAD 32●	2	LAD 322	0.120	
		3	LAD 323	0.180	
		4	LAD 324	0.240	
Description	Kit contents		Reference	Weight kg	
Assembly and power connection kit for LS1 D323 and LC1 D093...D323	1 LAD 311 plate for mounting LS1 D323 2 LAD 341 power connection modules - between LS1 D323 and power splitter box - between LS1 D323 and contactor		LAD 352	0.078	
Description	Maximum capacity	Application	Sold in lots of	Unit reference	Weight kg
Upstream terminal block	16 mm ²	Power supply to 1 or 2 power splitter boxes	1	LAD 3B1	0.212
Downstream terminal block	16 mm ²	Connection of motor cables	1	LAD 331	0.050
Cable end reducer	–	For connection of conductors from 1 to 1.5 mm ²	20	LAD 99	–