

## YOUR ADVANTAGE

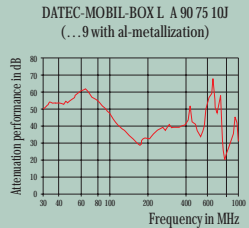
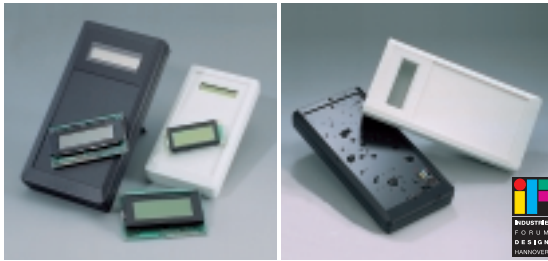
- Compatible with standard LCD modules\*.
- Display windows protect the fitted display modules and guarantee a high protection class IP 65 in the display area.
- With and without battery compartment.
- Recessed operating area in order to protect the membrane keyboards.
- Plain surfaces for interfaces.
- Tilt foot bar as accessory for ergonomic inclined position.
- Wall-suspension element for secure storage.

## STANDARD COLOURS

Off-white, RAL 9002.  
 Black, RAL 9005.  
 Fine textured surface.  
 Please refer to colour chart on page 214.

## MATERIAL

ABS (UL 94 HB).  
 Also available in other materials on request. Please refer to the specifications on pages 215-217.



## APPLICATIONS

Terminals for mobile data recording and transfer. Measuring and control technology. Stock and sales logging. Digital controlling technology. Particularly suitable for harsh environments.



NEW: Wall-suspension element set for secure storage. For order data see page 32.

## EMC

Cases marked with  $\neq$  are available with aluminium metallization on demand. By overlapping of bottom and top part, a shielding effect of approx. 50 dB will be achieved (see fig.). The battery compartment A 91 74 004 is available in different versions. See also pages 207-209.

## SEALED, ROBUST, MOBILE, CONVINCING DESIGN.

VDE-tested protection class **IP 65**.

Specially designed case system for mobile data recording and data transfer.

The cases are available in three sizes and different versions. The large programme offers best possible flexibility regarding installation components and power supply.

The robust construction also allows its use in harsh environments.

## MODIFICATIONS AS PER CUSTOMER'S REQUIREMENTS

Machining on modern CNC-controlled machines. Lacquering. Silk screen and tamper printing. See pages 210-213.

## DESIGN

Small hand-held box of attractive design. With integrated battery compartment for two 1.5 V mignon cells (AA) or one 9 V flat battery. Also available without battery compartment. Robust and sealed up to IP 65. Recessed control area to protect the membrane keyboard.

## ASSEMBLY

Case parts are assembled by 4 self-tapping screws, lid of battery compartment – if supplied – by 2 threaded screws M3.



### VERSION I

Top with closed operating area, recessed by 0.067".

### VERSION II

Top with display cutout for 2"-LC-modules with active area up to 1.803 x 0.701"

### VERSION III

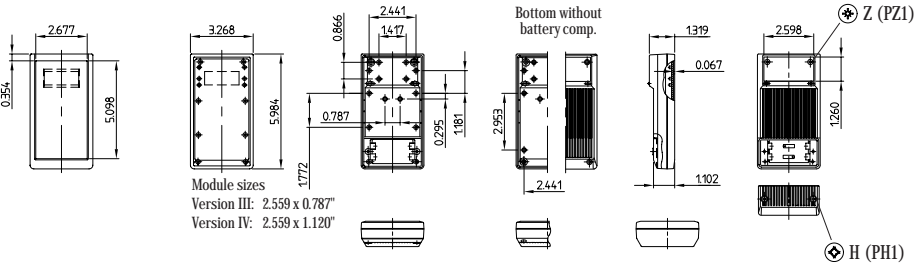
Top with display cutout for miniature-LCDs with 2 lines x 20 characters.

### VERSION IV

Top with display cutout for miniature-LCDs with 4 lines x 20 characters.

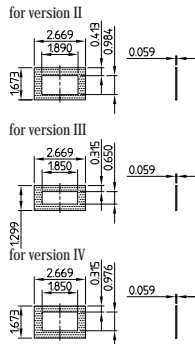
Detailed drawing available on demand in dwg or dxf format.

⊗ ⊕ = Type of screw for case fixing: cross head



Max. size of PCB: top part 2.835 x 5.551", base part without battery compartment 2.835 x 5.591" or with battery comp. 2.835 x 4.094" (cutouts for pillars not taken into consideration)

## Display windows (accessories)



Outside dim. in inch	L	W	H	Version	Display cutout (inch)	Part-No.		Part-No.	
						with battery compartment off-white	black	without battery compartment off-white	black
5.984	3.268	1.319	I	-	-	A 90 73 107 ‡	A 90 73 109 ‡	A 90 73 117 ‡	A 90 73 119 ‡
5.984	3.268	1.319	II	1.795 x 0.701		A 90 73 207 ‡	A 90 73 209 ‡	A 90 73 217 ‡	A 90 73 219 ‡
5.984	3.268	1.319	III	1.756 x 0.362		A 90 73 307 ‡	A 90 73 309 ‡	A 90 73 317 ‡	A 90 73 319 ‡
5.984	3.268	1.319	IV	1.756 x 0.693		A 90 73 407 ‡	A 90 73 409 ‡	A 90 73 417 ‡	A 90 73 419 ‡
ACCESSORIES									
Article	Version / Application								
Sealing kit	for sealing up to <b>IP 65</b>				A 91 73 001				
Plug-in contact	for 1 x 9 V flat battery (PP3)				A 91 60 003				
Set of battery clips	tin plated, for 2 x 1.5 V mignon cells (AA)				A 91 94 001				
Battery spacer	to secure the mignon cells, further description see page 32				A 92 50 250				
Display window	Set with adhesive foil for prot. class up to IP 65				for version II		for version III		for version IV
	Acrylic glass, transparent, border off-white				A 91 73 007		A 91 73 307		A 91 73 407
Acrylic glass, transparent, border black				A 91 73 009		A 91 73 309		A 91 73 409	

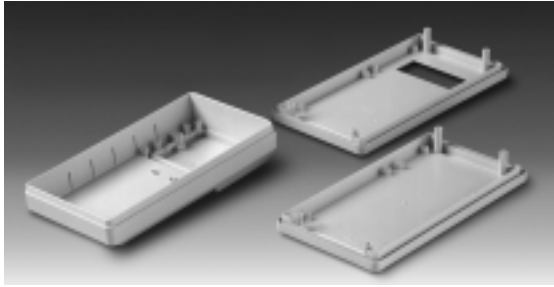


**VERSION I**  
Top with closed operating area, recessed by 0.067".

**VERSION II**  
Top with display cutout for standard-LCD modules with 2 lines x 16 characters.

**VERSION III**  
Top with display cutout for compact-LCD modules with 2 lines x 16 characters.

**VERSION IV**  
Top with display cutout for standard-LCD modules with 4 lines x 16 characters.



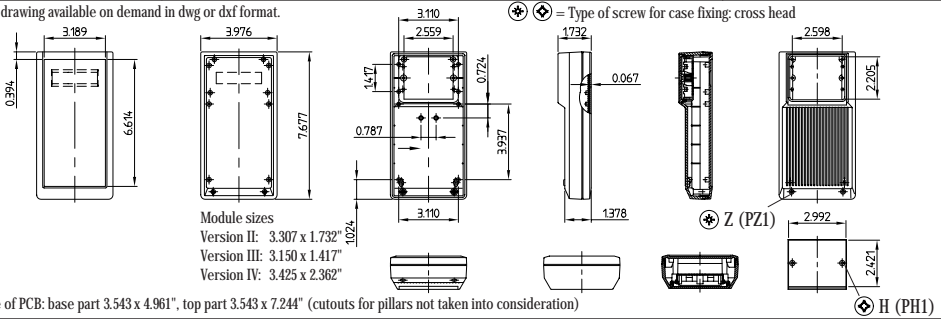
**DESIGN**

Universally applicable hand-held box of medium size, robust and sealed up to IP 65. Large area for cutouts and openings. Recessed control area for keyboards. Three screw-in battery compartments, designed for four 1.5 V mignon cells (AA), one 9 V flat battery (PP3) or two 9 V flat batteries (2 x PP3) available as accessory sets (fixing screws included). Lid of battery compartment in the base.

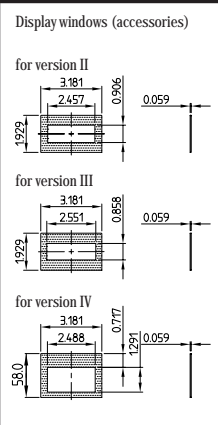
**ASSEMBLY**

Case parts are assembled by 4 self-tapping screws, battery compartment lid by 2 threaded screws M3.

Detailed drawing available on demand in dwg or dxf format.



Part-No.		CASE (Part-No. with $\neq$ see EMC page 28)			Version	Display cutout (inch)
off-white	black	Outside dim. in inch		Display cutout (inch)		
L	W	H				
A 90 74 107 $\neq$	A 90 74 109 $\neq$	7.677	3.976	1.732	I	-
A 90 74 207 $\neq$	A 90 74 209 $\neq$	7.677	3.976	1.732	II	2.362 x 0.591
A 90 74 307 $\neq$	A 90 74 309 $\neq$	7.677	3.976	1.732	III	2.441 x 0.512
A 90 74 407 $\neq$	A 90 74 409 $\neq$	7.677	3.976	1.732	IV	2.370 x 0.953
ACCESSORIES						
Article	Colour	Version / Application				
A 91 74 001	Sealing kit	grey	for sealing up to <b>IP 65</b>			
A 91 74 003	Battery compartment	off-white	for 1 x 9 V flat battery (PP3), ABS			
A 91 74 006	Set of battery clips*	tin plated	for 1 x 9 V flat battery (PP3)			
A 91 74 002	Battery compartment	off-white	for 2 x 9 V flat batteries (PP3), ABS			
A 91 61 002	Set of battery clips*	tin plated	for 2 x 9 V flat batteries (PP3)			
A 91 74 004	Battery compartment	off-white	for 4 x 1.5 V mignon cells (AA), ABS			
A 91 61 001	Set of battery clips	tin plated	for 4 x 1.5 V mignon cells (AA)			
for Version II	for Version III	for Version IV	Display window (Set with adhesive foil for protection class up to IP 65)			
A 91 74 007	A 91 74 307	A 91 74 407	acrylic glass, transparent, border off-white			
A 91 74 009	A 91 74 309	A 91 74 409	acrylic glass, transparent, border black			



# DATEC-MOBIL-BOX L



DATEC-MOBIL-BOXES

## DESIGN

Hand-held box with wide range of applications, robust and sealed up to IP 65. Prepared for mounting PCBs of Eurocard size. Large control area for membrane keyboards and controls. Bottom part with or without integrated and sealed battery compartment, accessible from the outside, for four 1.5 V mignon cells (AA) or one 9 V flat battery (PP3).

## ASSEMBLY

Case parts are assembled by 4 self-tapping screws, battery compartment lid by 2 threaded screws M3.



NEW  
without battery compartment  
VERSION I

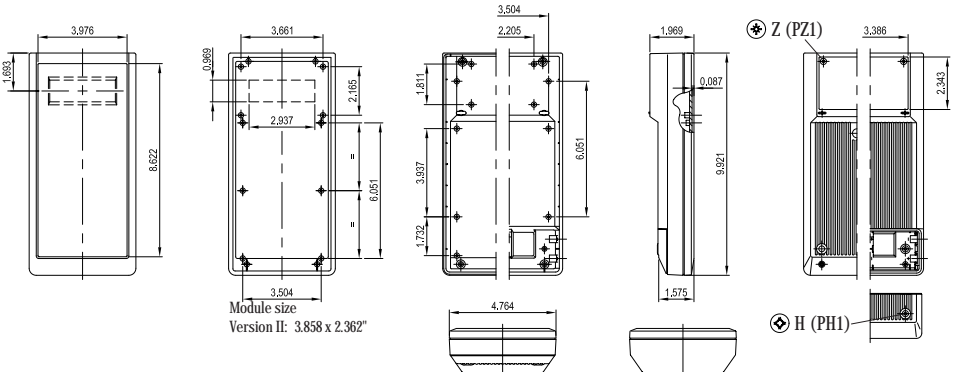
Top with closed operating area, recessed by 0.087".

VERSION II

Top with display cutout for LCD modules of 20 characters x 4 lines.

Detailed drawing available on demand in dwg or dxf format.

⊗ ⊕ = Type of screw for case fixing: cross head



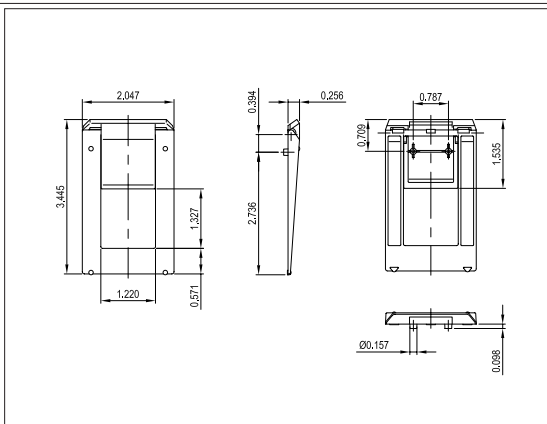
Max. size of PCB: base part without battery compartment 9.331 x 4.252" or with battery comp. 7.480 x 4.252", top part 4.331 x 9.488" (cutouts for pillars not taken into consideration)

Display window (accessory) for version II	CASE (Part-No. with $\nabla$ see EMC page 28)			Version	Part-No.		
	Outside dim. in inch				with batt. comp.	without batt. comp.	
	L	W	H				
	9.921	4.764	1.969	off-white	I	A 90 75 107 $\nabla$	A 90 75 117 $\nabla$
	9.921	4.764	1.969	off-white	II	A 90 75 207 $\nabla$	A 90 75 217 $\nabla$
	9.921	4.764	1.969	black	I	A 90 75 109 $\nabla$	A 90 75 119 $\nabla$
	9.921	4.764	1.969	black	II	A 90 75 209 $\nabla$	A 90 75 219 $\nabla$
ACCESSORIES							
Article	Colour	Version / Application					
Sealing kit	grey	up to <b>IP 65</b>					
Plug-in contact	blue	for 1 x 9 V flat battery (PP3)					
Set of battery clips	tin plated	for 4 x 1.5 V mignon cells (AA)					
Display window (Set with adhesive foil IP 65)	transparent	acrylic glass, border off-white					
	transparent	acrylic glass, border black					
						A 91 75 001	
						A 91 60 003	
						A 91 61 002	
						A 91 75 007	
						A 91 75 009	

## TILT FOOT BAR

Specially applicable tilt foot bar to improve the viewing angle. Premoulded center holes have been provided to facilitate the mounting to the DATEC-MOBIL-BOXES M and S. These knockouts can subsequently be drilled or punched.

When properly mounted, the protection class of the case will be maintained!

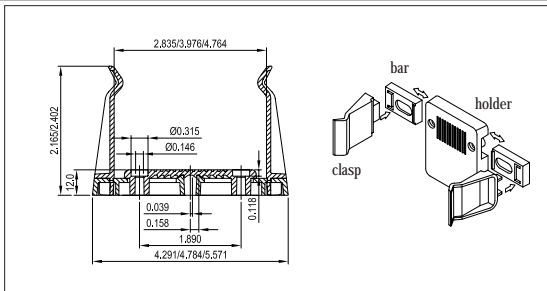


Mounting holes:  
2x  $\varnothing 1.654''$  at a center distance of 7.874''.

Part-No.	Article	Version	Supply
A 92 50 907	Tilt foot bar	off-white, RAL 9002	Each 1 tilt foot bar and 2 fixing screws
A 92 50 909		black, RAL 9005	$\varnothing 2.2 \times 6$ mm.
A 92 07 150	Non-slip pads	for the case, clear	2 pieces $\varnothing 6.5$ mm

## WALL-SUSPENSION ELEMENT

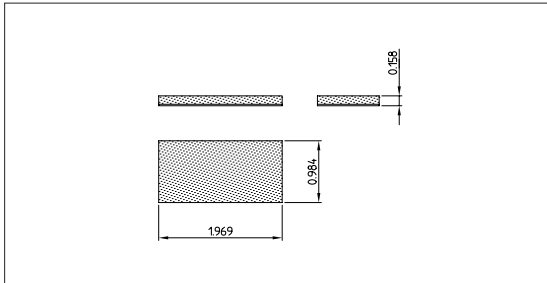
For secure storage of the cases. Two clasps embracing the case at the sides are screwed down together with a correct at the wall after correct adjustment of the width.



Part-No.	For DATEC-MOBIL-BOX	Version	Supply
A 92 26 237	S	ABS, off-white, RAL 9002	Each 2 clasps, 2 bars and 1 holder.
A 92 26 239		ABS, black, RAL 9005	
A 92 26 227	M	ABS, off-white, RAL 9002	
A 92 26 229		ABS, black, RAL 9005	
A 92 26 127	L	ABS, off-white, RAL 9002	
A 92 26 129		ABS, black, RAL 9005	

## BATTERY SPACER

This spacer is made of PE foam with one-sided adhesive coating. It serves to compensate for the differences in height and to secure the mignon cells (AA) within the battery compartments, which can also hold a 9 V flat battery (PP3). Suitable for DATEC-MOBIL-BOX S.



Also suitable for other OKW cases, e.g. DATEC-POCKET-BOX L, HAND-HELD BOX N etc. See accessories starting from page 199.

Part-No.	Version	Supply
A 92 50 250	PE foam with one-sided adhesive coating	1 battery spacer