

DETAILS

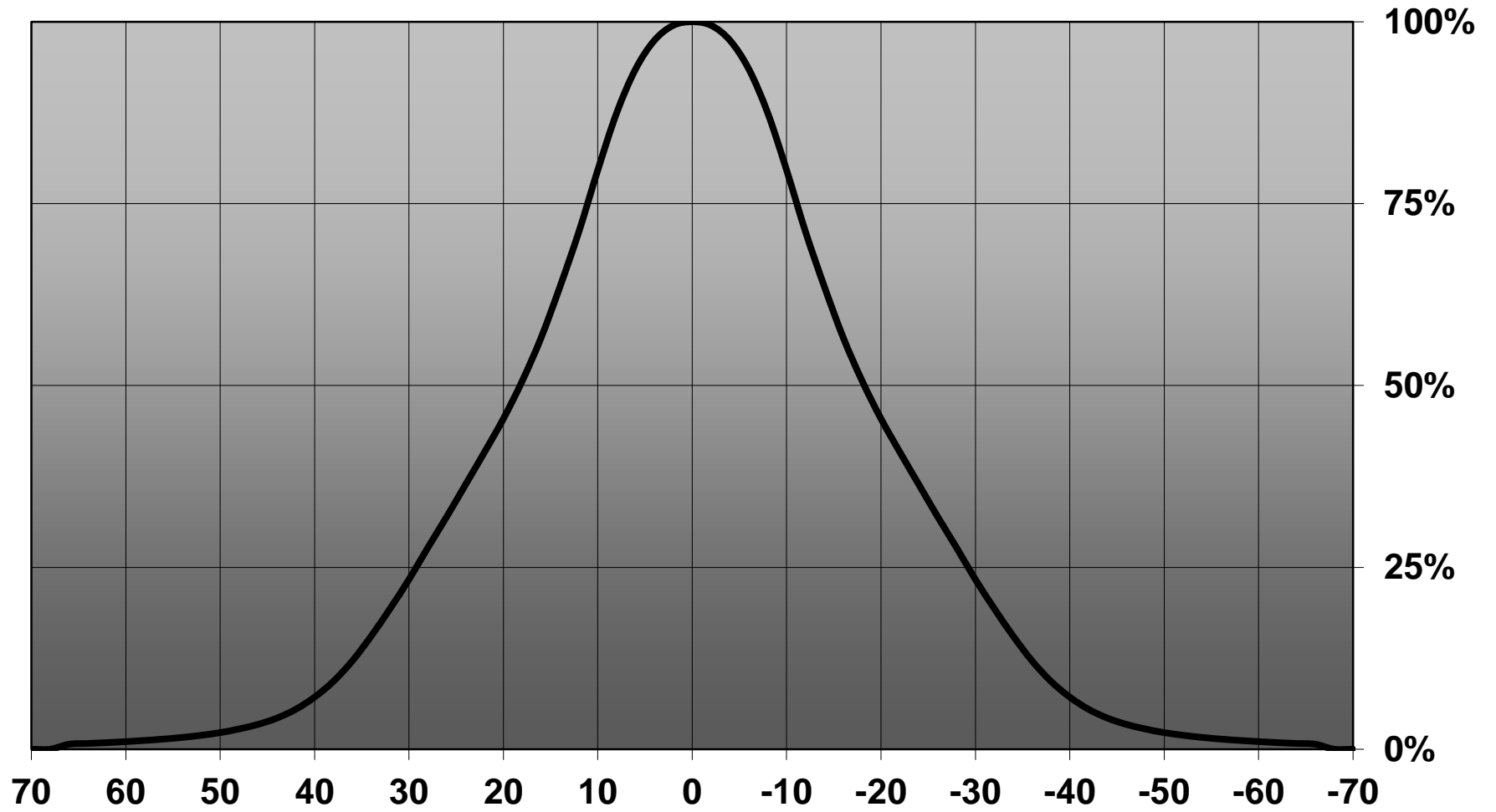
Product Number	FP13029_LISA2-WW-CLIP
Family	Lisa2
Type	Assembly
Color	black
Diameter	9,9 mm
Height	6,8 mm
Style	round
Optic Material	PMMA
Holder Material	PC
Fastening	clips, glue
Status	ready
ROHS Compliant	Yes
Date Updated	18/08/2014



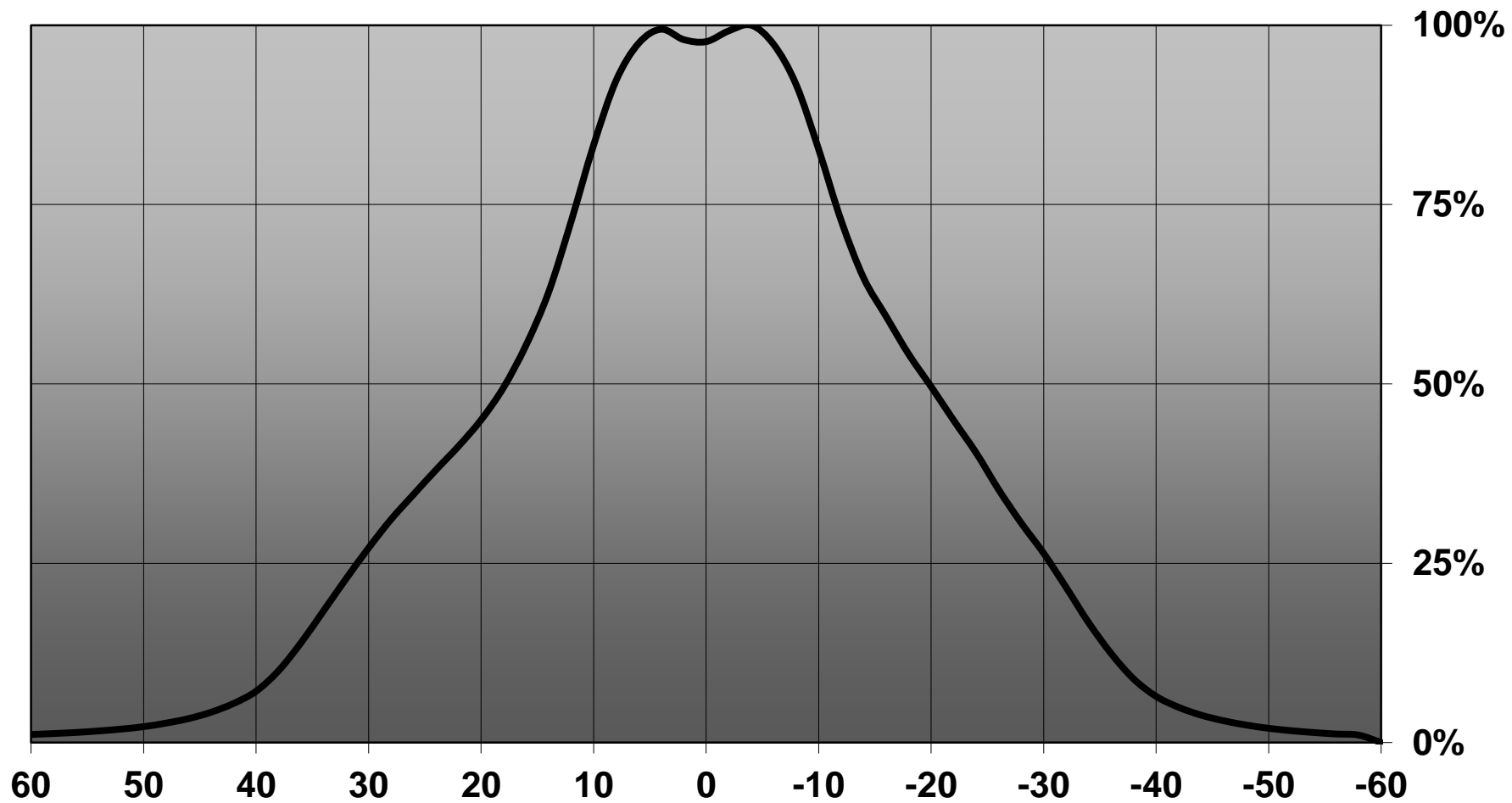
OPTICAL PROPERTIES

LED	Viewing	Light	Effi-		Connector
	Angle	Beam	ciency	cd/lm	
LUXEON Q	sim: 54	Very Wide	sim: 84 %	sim: 1.000	-
SFH 4715S (IR)	36 deg	Very Wide	-	sim: 0.000	-
SFH4725s (IR)	38 deg	Very Wide	-	sim: 0.000	-
NCSxx19B	41 deg	Very Wide	86 %	1.500	-
XP-E2	43 deg	Very Wide	88 %	1.350	-
XT-E	47 deg	Very Wide	84 %	1.100	-
XP-G2	47 deg	Very Wide	88 %	1.200	-
LH351Z	60 deg	Very Wide	90 %	0.950	-
LH351B	67 deg	Very Wide	88 %	0.890	-

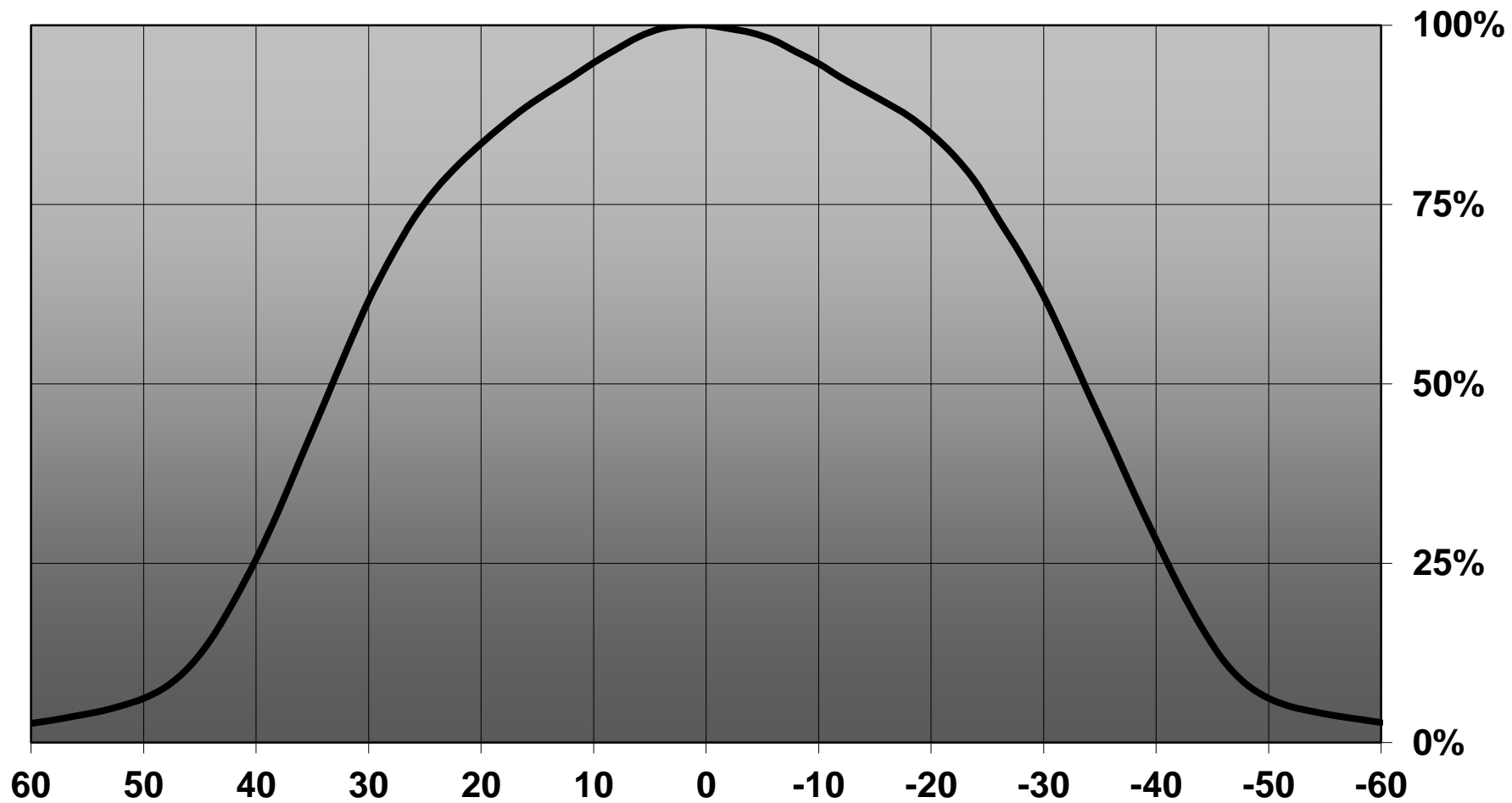
Relative intensity of FP13029&FP13026_LISA2-WW-SFH-IR



Relative intensity of FP13029_LISA2-WW-CLIP_(SFH4725S)



Relative intensity of FP13029_LISA2-WW-CLIP_(LH35B)



D

C

B

A

4

4

3

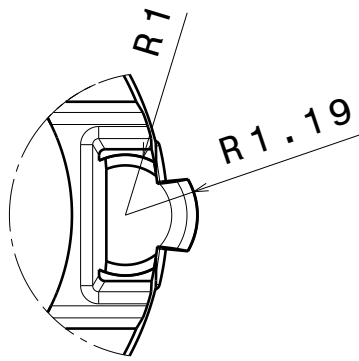
3

2

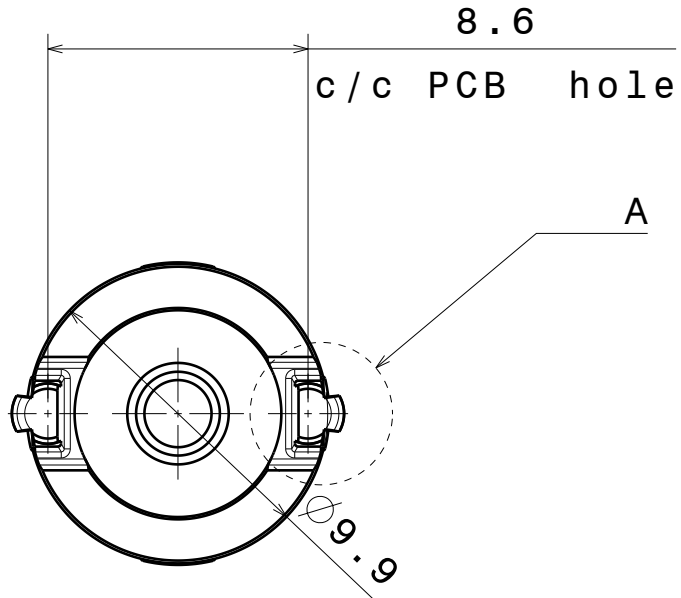
2

1

1



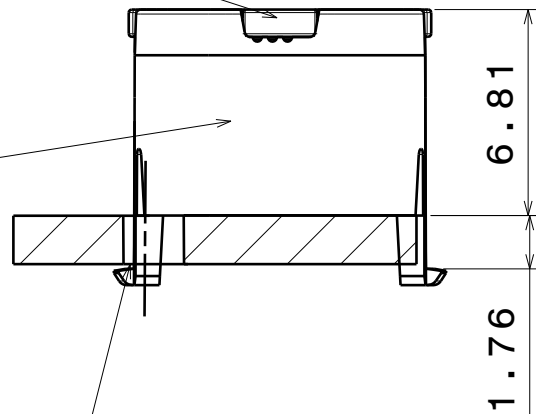
Detail A
Scale: 8:1



Bottom view
Scale: 4:1

Lens

Holder



Front view
Scale: 4:1

Materials:
Lens PMMA
Holder PC

Note:
Take tolerances
into account
when specifying
holes for PCB

This drawing is our property.
It can't be reproduced
or communicated without
our written agreement.



Ledil Oy
Salorankatu 10
FIN-24240 SALO
Finland

DRAWING TITLE

Datasheet Lisa2-clip16-XT series Assy

DRAWN BY

pl

DATE

20.06.2012

CHECKED BY

sn

DATE

20.7.2011

DESIGNED BY

pl

DATE

20.06.2012

SIZE

A4

DRAWING NUMBER

REV

1

SCALE

4:1

WEIGHT (g)

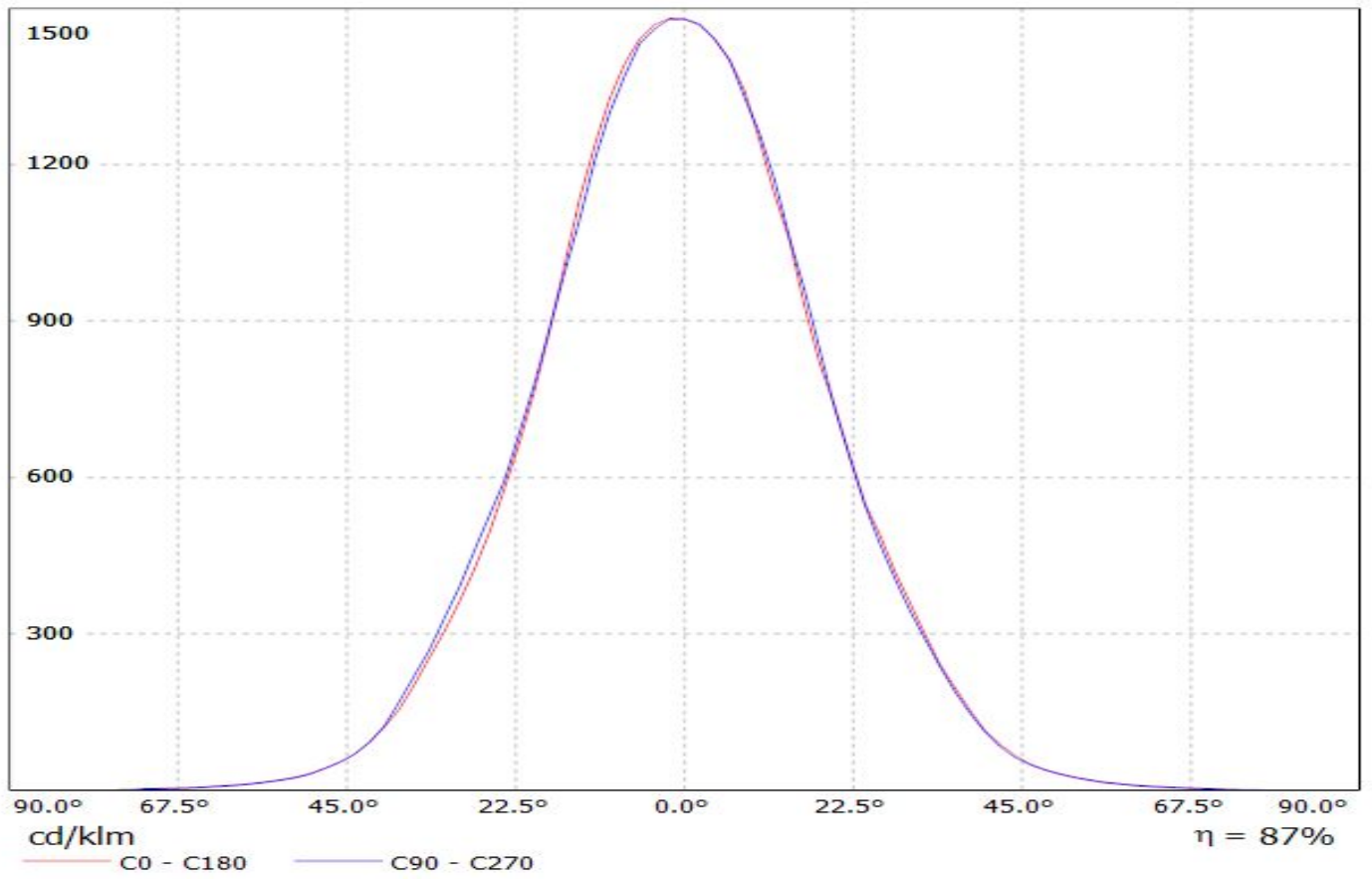
SHEET

1/1

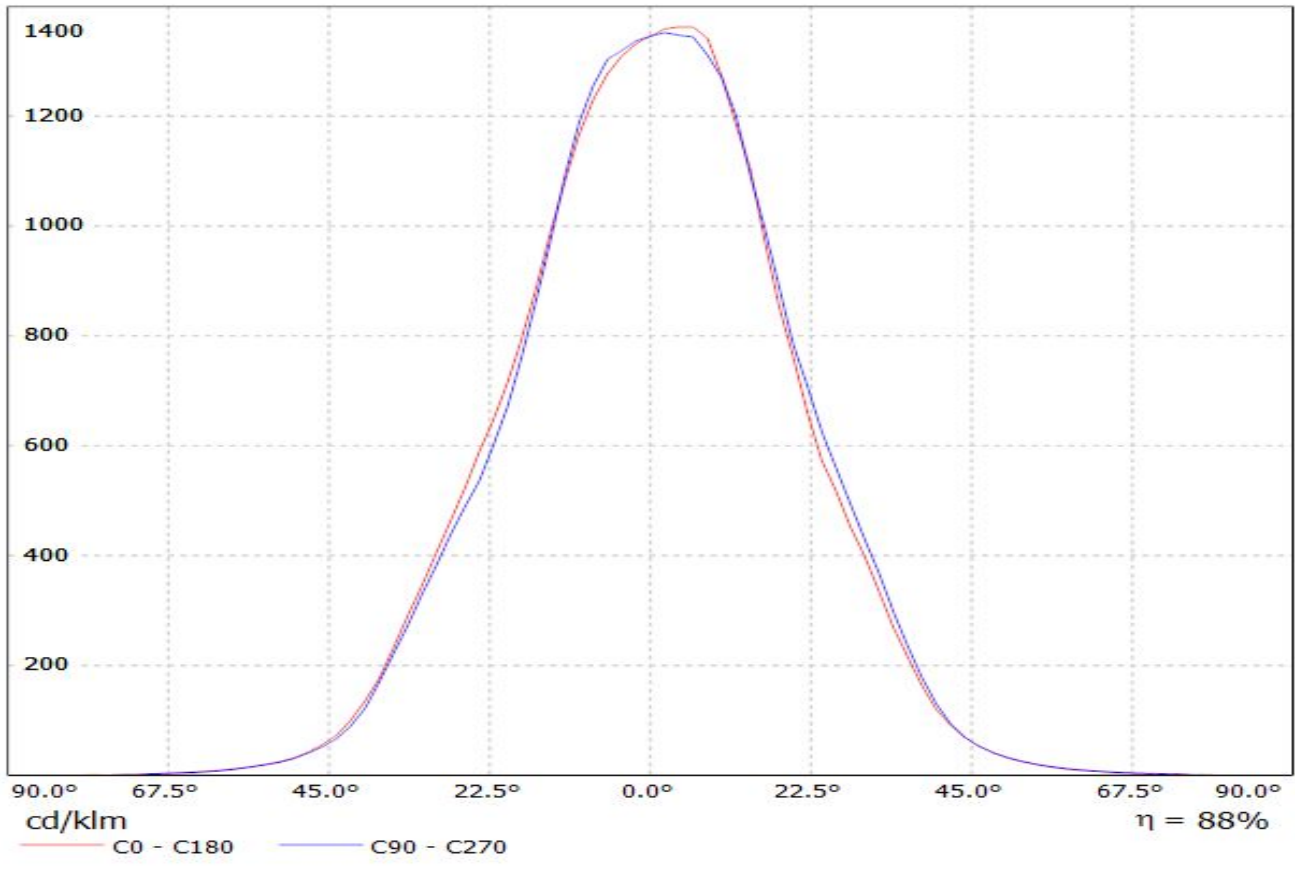
D

A

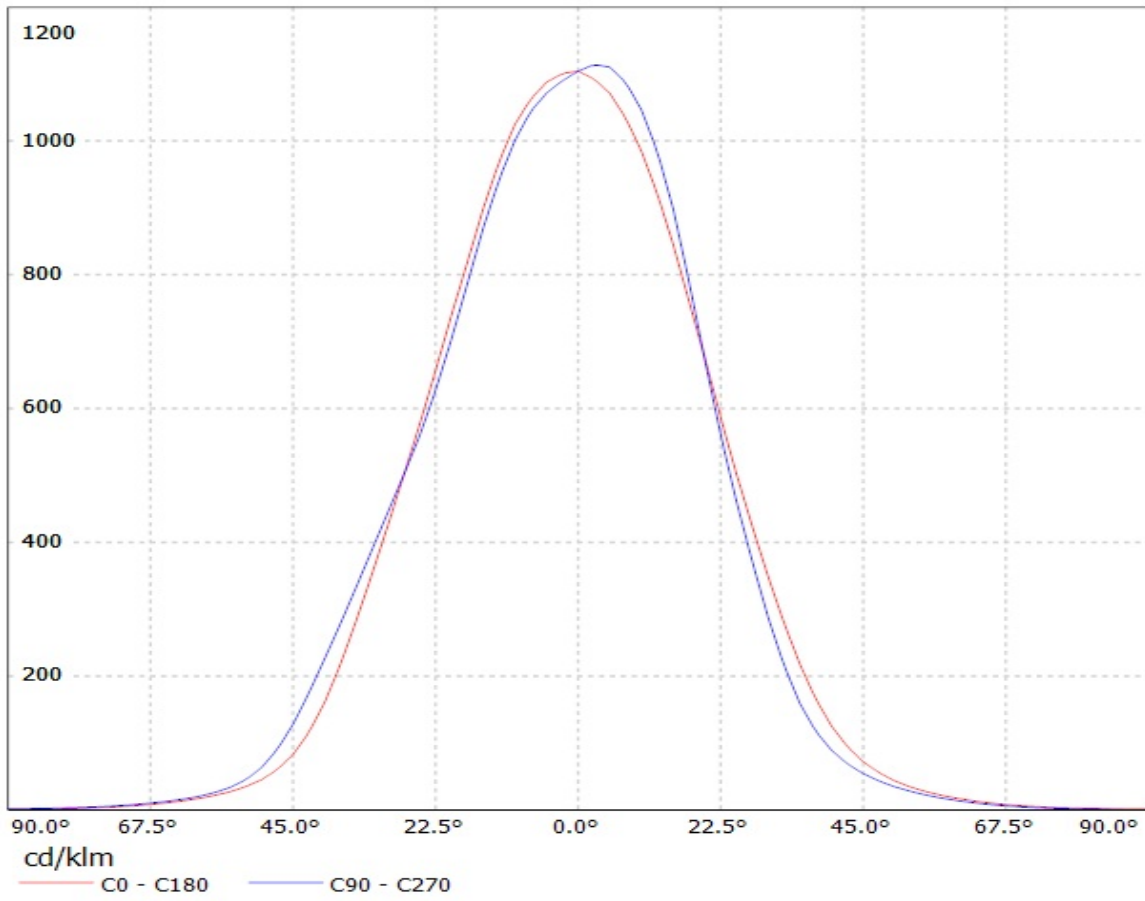
Luminaire: Ledil Oy FP13026&FP13029_LISA2-WW-PIN_(NCSxx19B) Eff. 86%
Lamps: 1 x Nichia NCSxx19B (NCSL119BE) 88lm @ 250mA CCT=3000K P=0.8W I=250mA



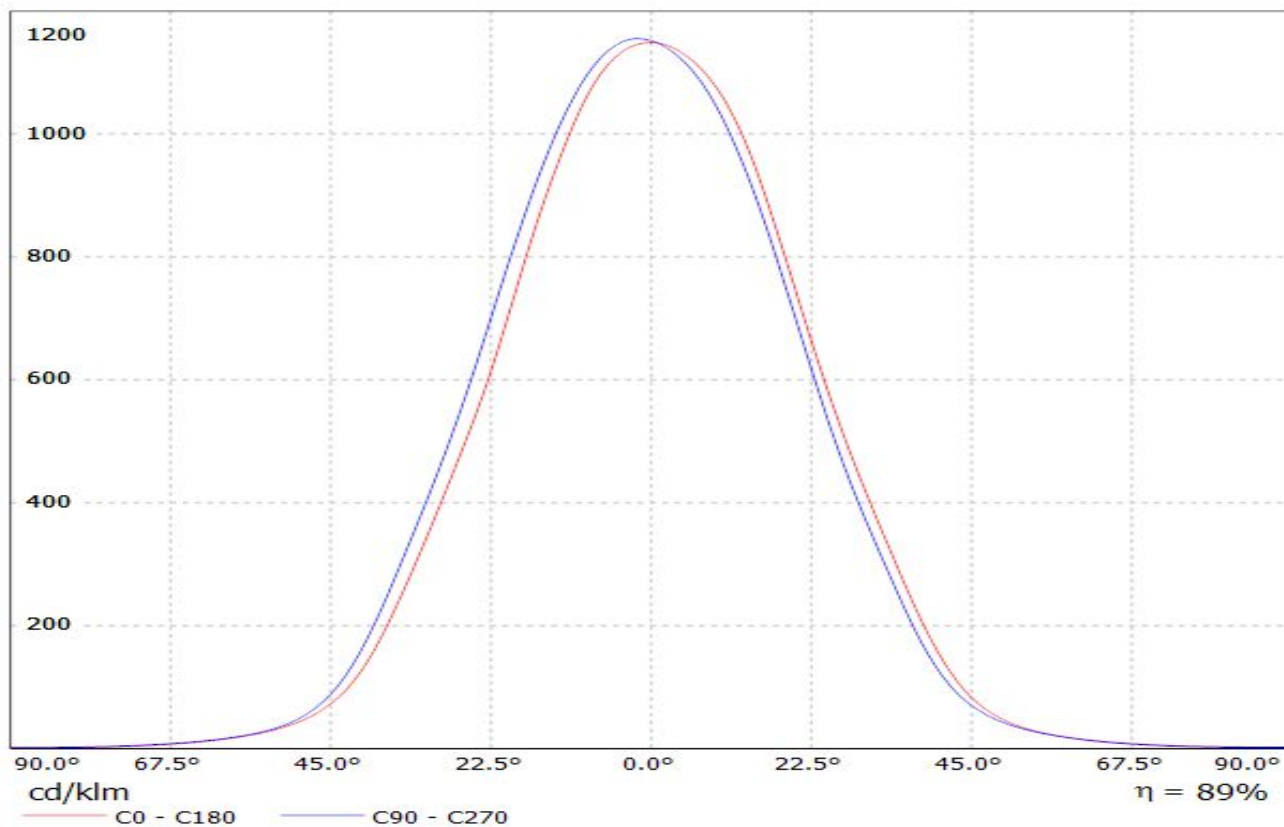
Luminaire: Ledil Oy FP13026&FP13029_LISA2-WW_PIN&CLIP (XP-E2) Eff. 88%
Lamps: 1 x Cree XP-E2 cool white 92lm@250mA CCT=5600K P=0.75W I=250mA



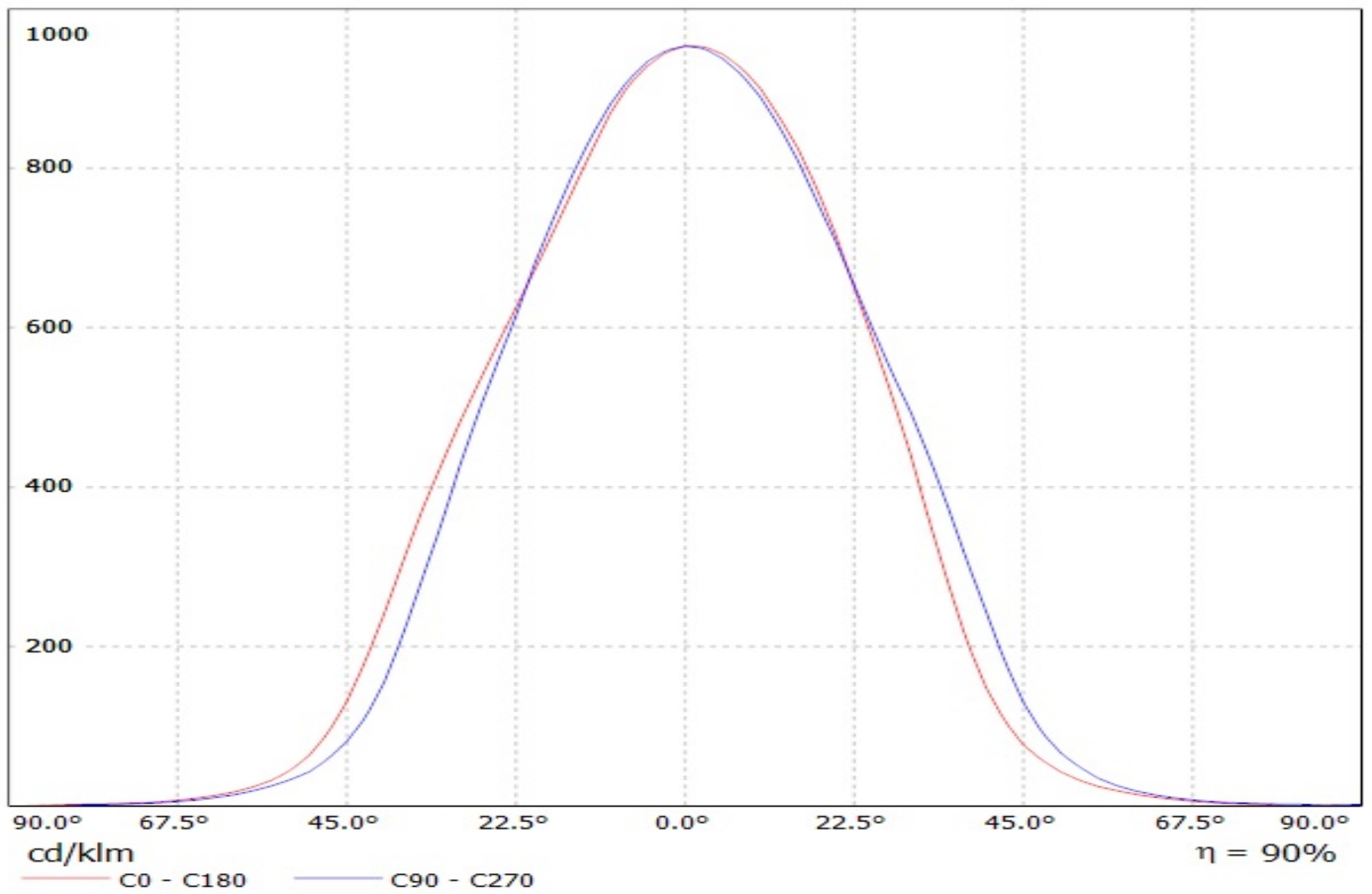
Luminaire: LEDIL OY FP13026_LISA2-WW-PIN & FP13029_LISA2-WW-CLIP-XTE (Cree XT-E 98lm @ 250mA) Efficiency=84%
Lamps: 1 x CREE XT-E (98.9lm)



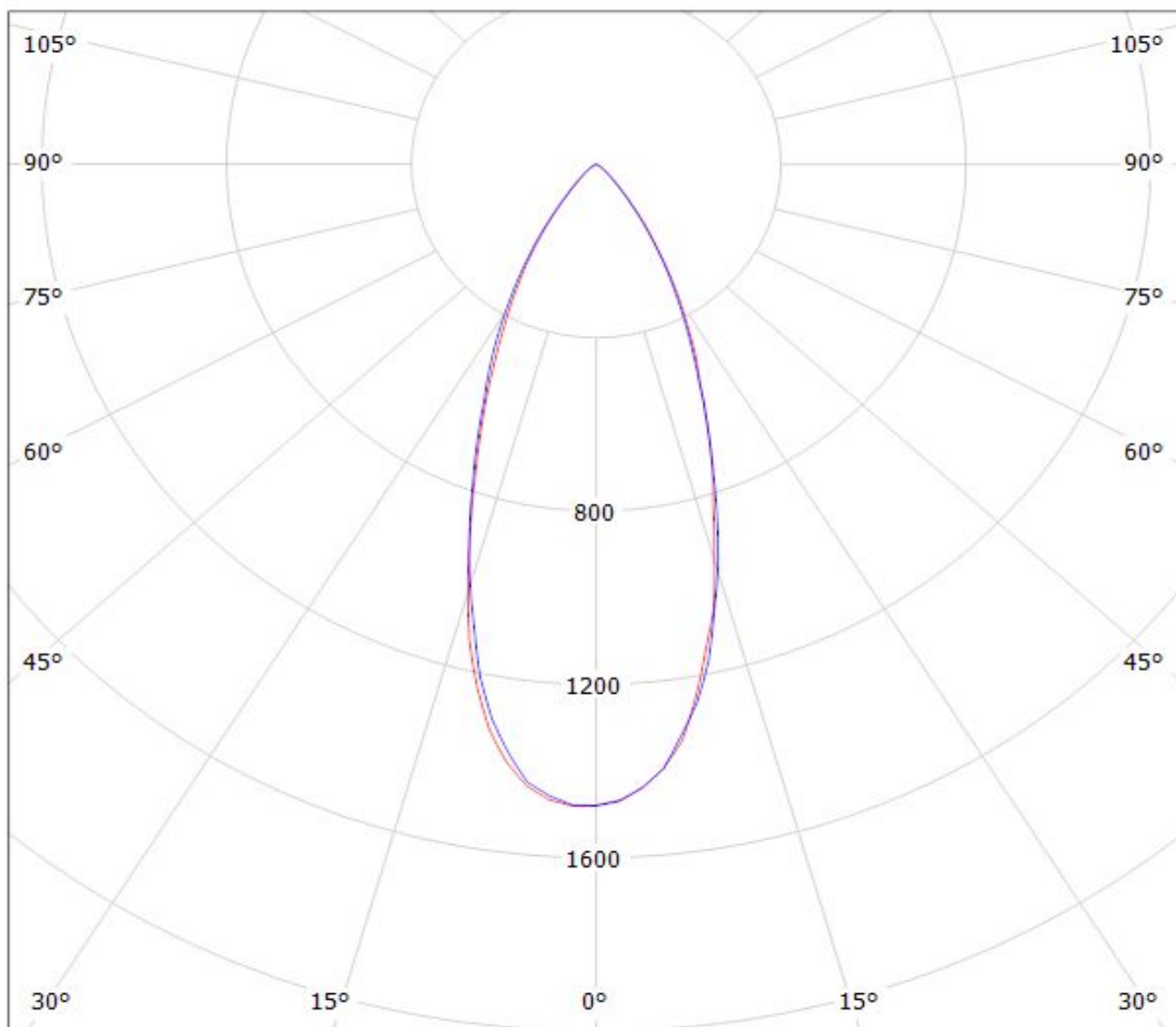
Luminaire: LEDiL Oy FP13026&FP13029_LISA2-WW_(XP-G2) Eff. 89%
Lamps: 1 x Cree_(XP-G2) 104lm@250mA CCT=6600K P=0.76W I=250mA



Luminaire: LEDil Oy FP13026_LISA2-WW-PIN_(LH351Z)
Lamps: 1 x Samsung LH351Z (90.14lm @ 250mA) CCT=6500K P=0.7W I=250mA



Luminaire: Ledil Oy FP13026&FP13029_LISA2-WW-PIN_(NCSxx19B) Eff. 86%
Lamps: 1 x Nichia NCSxx19B (NCSL119BE) 88lm @ 250mA CCT=3000K P=0.8W I=250mA



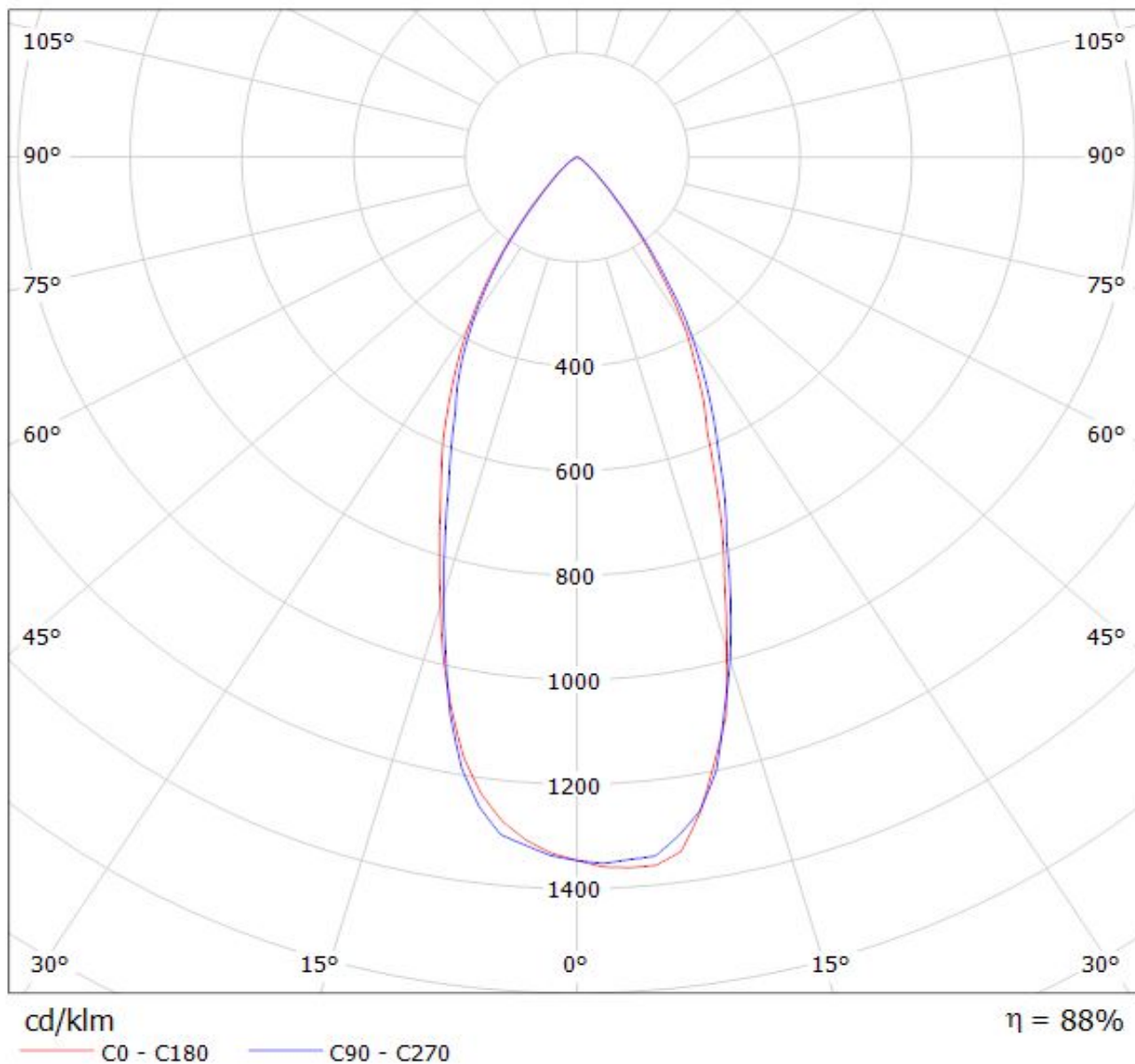
cd/klm

— C0 - C180

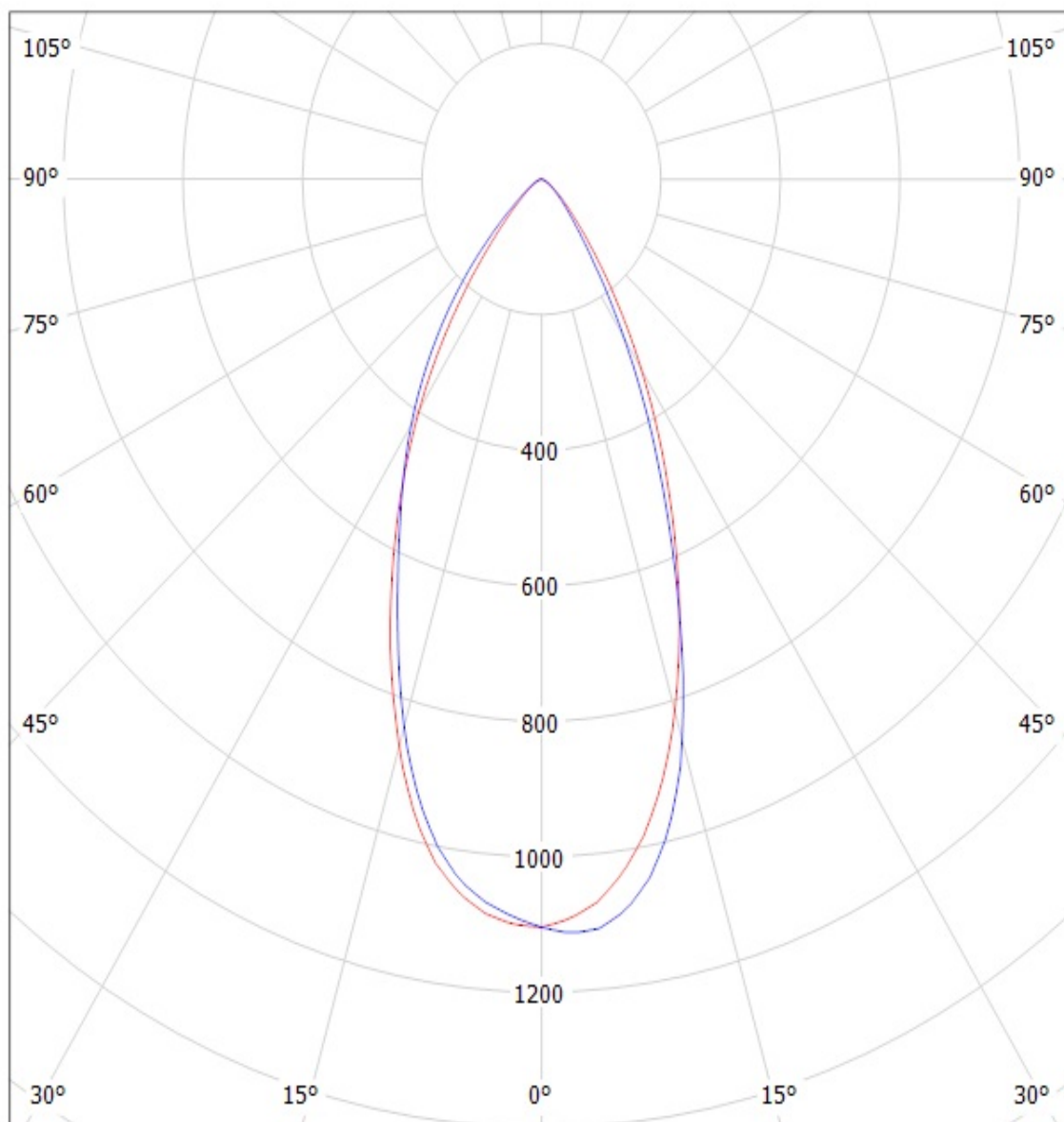
— C90 - C270

$\eta = 87\%$

Luminaire: Ledil Oy FP13026&FP13029_LISA2-WW_PIN&CLIP (XP-E2) Eff. 88%
Lamps: 1 x Cree XP-E2 cool white 92lm@250mA CCT=5600K P=0.75W I=250mA



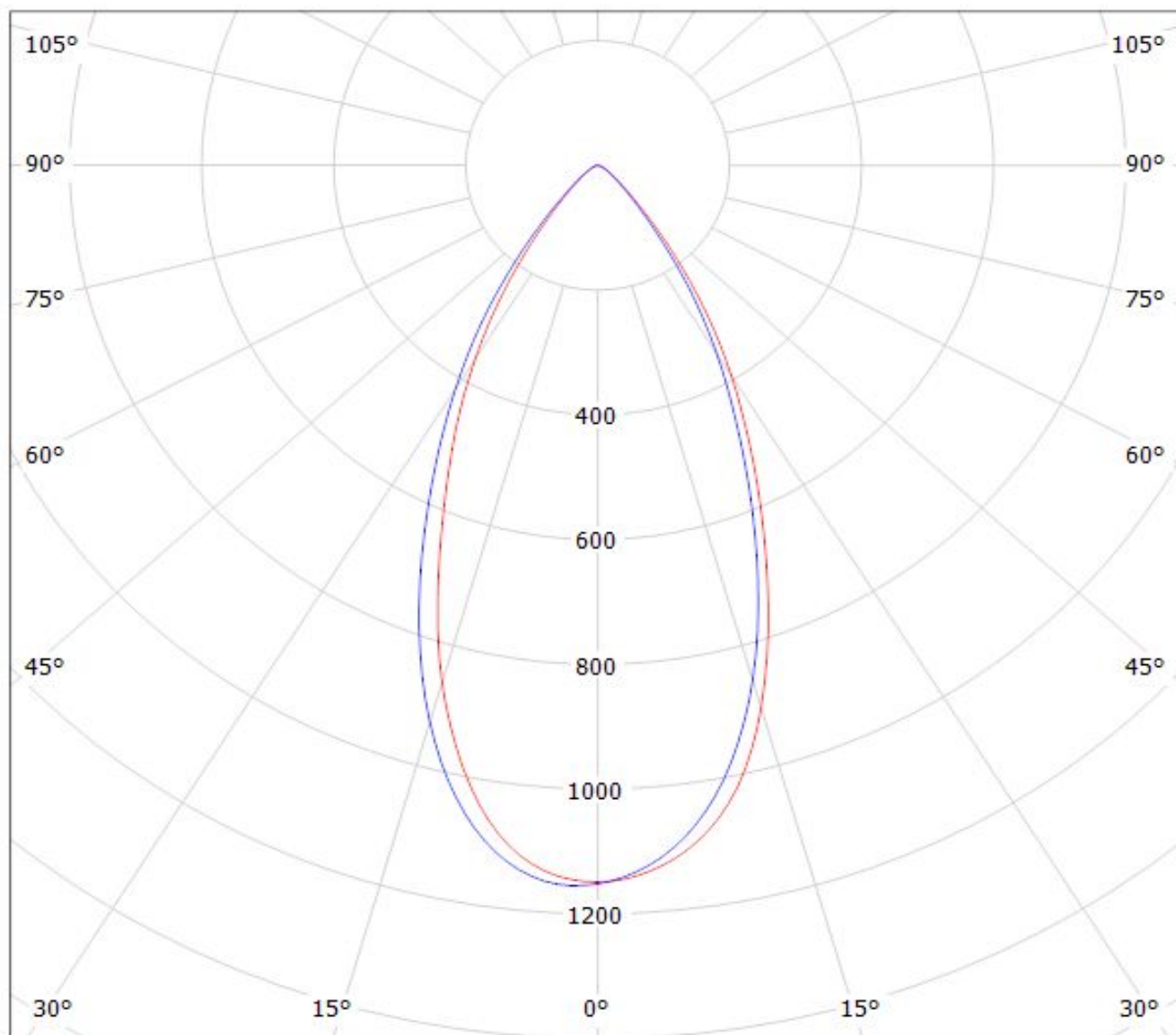
Luminaire: LEDIL OY FP13026_LISA2-WW-PIN & FP13029_LISA2-WW-CLIP-XTE (Cree XT-E 98lm @ 250mA) Efficiency=84%
Lamps: 1 x CREE XT-E (98.9lm)



cd/klm

— C0 - C180 — C90 - C270

Luminaire: LEDiL Oy FP13026&FP13029_LISA2-WW_(XP-G2) Eff. 89%
Lamps: 1 x Cree_(XP-G2) 104lm@250mA CCT=6600K P=0.76W I=250mA



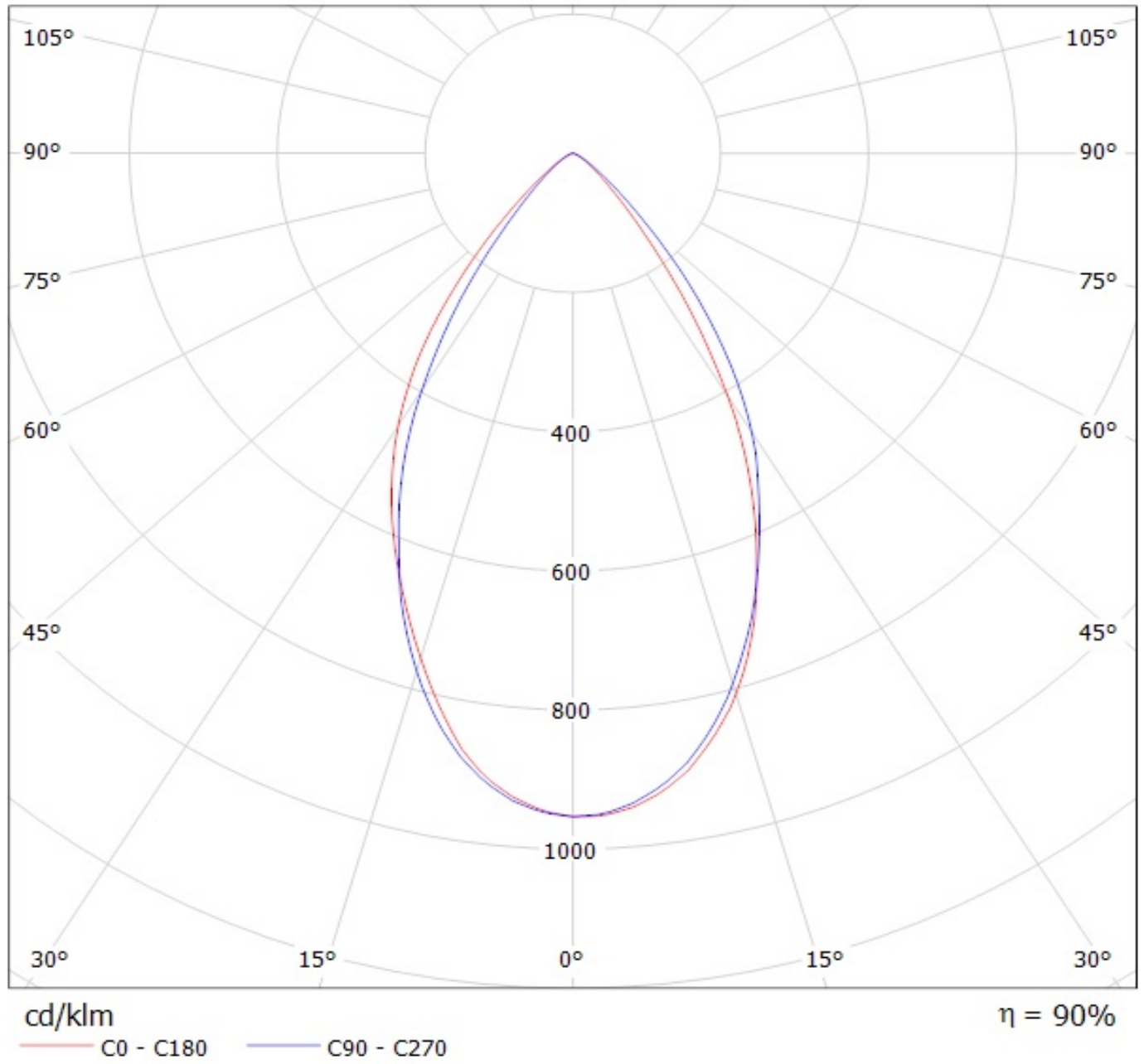
cd/klm

$\eta = 89\%$

— C0 - C180 — C90 - C270

Luminaire: LEDil Oy FP13026_LISA2-WW-PIN_(LH351Z)

Lamps: 1 x Samsung LH351Z (90.14lm @ 250mA) CCT=6500K P=0.7W I=250mA



NOTE: The typical divergence will be changed by different color, chip size and chip position tolerance. The typical total divergence is the full angle measured where the luminous intensity is half of the peak value.