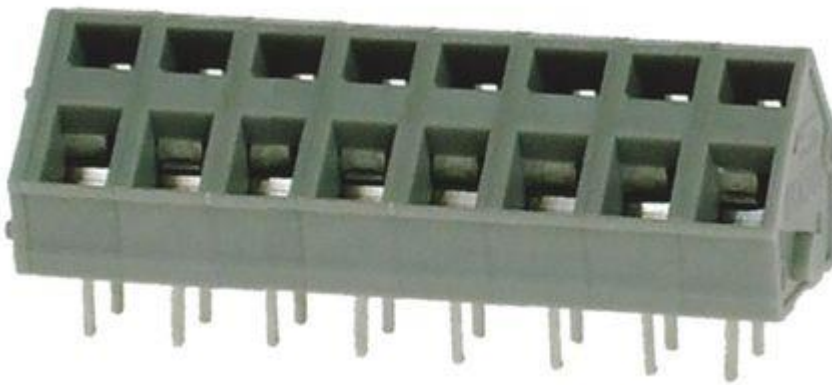


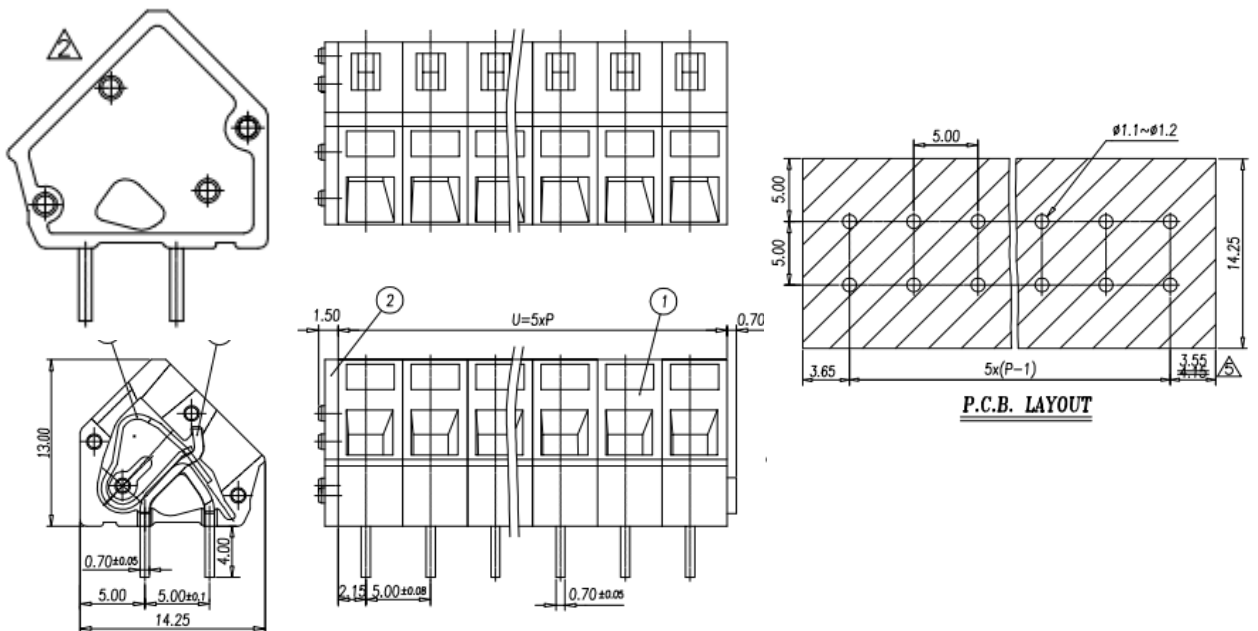
Datasheet

New 5.0mm Screwless 15A 8 Way

RS Stock 874-5518



Dimensions: (mm)





ENGLISH

Specifications

- Rated Voltage: 300V 15A
- Insulation Withstands Voltage: AC 2500 V/ Min
- Insulation Resistance: $\geq 500\Omega\text{M}$ or more at DC500V
- Temperature Range: $-40^{\circ}\text{C} \sim +105^{\circ}\text{C}$
- Suitable Electric Wire: 28~12AWG

Materials

- Housing: PA66
- Clamp: Stainless Steel
- Solder Pin: Copper
- End Cover: PA66 (VO)
- Solder Pin: Brass