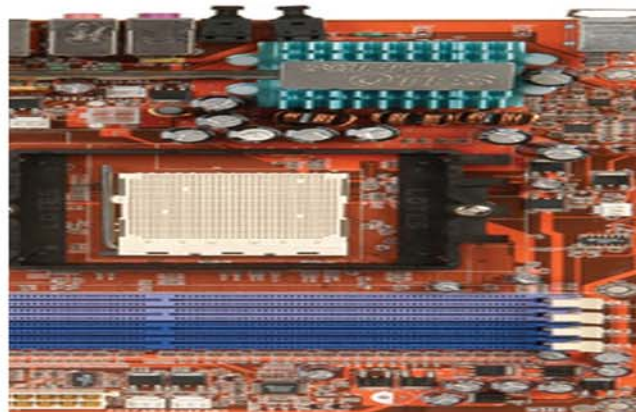
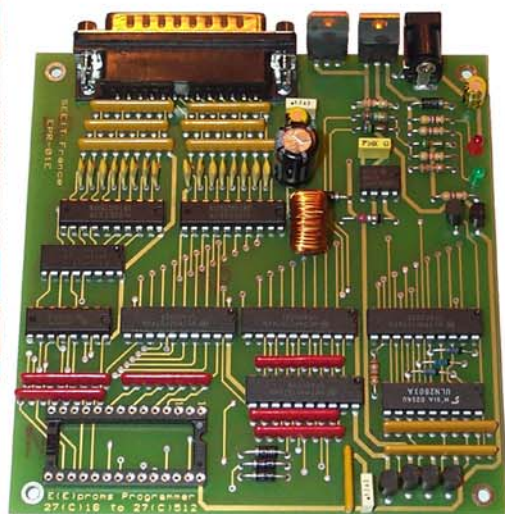


**EPROMS PROGRAMMER 2716 TO 27C512 IN 12,5V | 21V et 25V  
AND EEPROMS 28C16 TO 28C256 ON PARALLEL PORT  
DIP24 AND DIP28 TULIP SOCKET**



**EPR-01**



**Introduction:**

The EPR-01 is designed to read, copy and program EPROMs (27xxx and 27Cxxx families) and parallel EEPROMs (28Cxxx family) of 24 to 28 pins. The available programming tensions are 12.5V, 21V and 25V thanks to its integrated set-up transformer. The card connects to the parallel port of any compatible PC and it is equipped with a 28-pin tulip socket allowing you to program different devices. The EPR-01 is protected against polarity reversals, overvoltage and shorts. The EPR-01 works with the software Smartchip under Windows 98/ME/2000/XP.

**Devices supported list by software Smartchip version 1.4a :**

<b>AMD</b>	Am27C64	Am27C128	Am27C256	Am27C512				
<b>ATMEL</b>	AT27C256R	AT27C512R						
	AT28C04/E	AT28C16/E	AT28C17/E	AT28C64/E	AT28C64X	AT28C64B	AT28C256/E/F	AT28HC256/E/F
	AT29C256							
<b>FAIRCHILD</b>	NM27C128	NM27C256	FM27C256	NM27C512	FM27C512			
<b>Généric. Algo.</b>	2716(25V)	2716B(12.5V)	2732(25V)	2732A(21V)	2732B(12.5V)	2764(21V)	27C64(12.5V)	27128(21V)
	27C128(12.5V)	27256(21V)	27C256(12.5V)	27512(21V)	27C512(12.5V)	2864		
<b>MXIC</b>	MX27C256	MX27C512						
<b>ST-Microelectr.</b>	M2716	M2732A	M2764A	M27C64A	M27128A	M27256	M27C256B	M87C257
	M27512	M27C512						
<b>Texas Instr.</b>	TMS2516	TMS2532	TMS27C128	TMS27PC128	TMS27C256	TMS27PC256	TMS27C512	TMS27PC512
<b>XICOR</b>	X2816C	X28C64	X28HC64	X28C256	X28HC256	X28VC256		

**Features:**

Read / Write / Program / Verify / Blank-Check / Erase functions.  
Support high Vpp programming voltage : 12,5V / 21,0V / 25,0V.  
Not need exterior adapter for all DIP package devices : 24DIP and 28DIP.  
Works with the software Smartchip under Windows 98/ME/2000/XP (32bits).

**Hardware & Electrical specifications:**

Dimensions board : 110 x 115 x 23mm, Weight : 100g  
Dimensions package : 230 x 170 x 45mm, Weight : 310g  
Requires a no regulated continuous power pack 9Vdc / 500mA, (not provide).  
Interface : connect to laptop or PC through parallel port in ECP mode.

**Item includes:**

Programmer with tulip 28DIP package.  
Parallel cable.  
Software on CD-ROM.  
User manual in English and French.

**Products informations : [www.seeit.fr](http://www.seeit.fr)**

**Distributors : [www.rs-components.com](http://www.rs-components.com)**