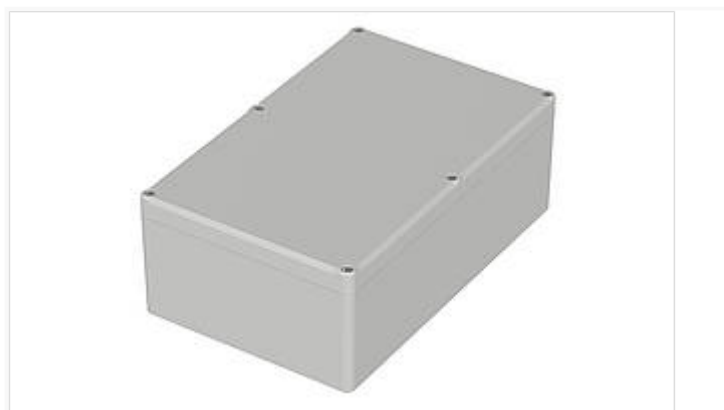


# Euromas II

Enclosure, polycarbonate



EM 240

Order no.: 62240000

\* = Available on request.

## Characteristics

Colour of enclosure group

Light grey

Protection class

IP 65

Enclosure Material

ABS, PC (UV stabilised); seal made of CR; UL 94 V0 types on request; for details see Technical Information

Scope of delivery

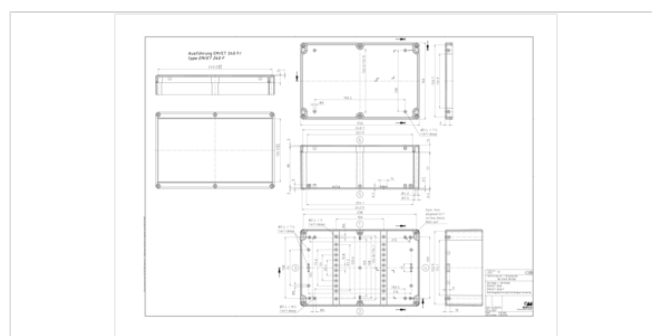
Lid and base, self-tapping coarse-pitch thread lid screws made of V2A

## Dimensions

Dimensions

250 x 160 x 92 mm

Product drawing



## Important!

To compensate for pressure when temperatures change and cause moisture in the enclosure, we recommend that you use a pressure compensation element.

» Additional information

## Technical documentation / Downloads

### Technical drawings

3D product data in STEP format: Registration necessary

Product drawing in PDF format: 62240000 EM-240.pdf (104.3 KB)

Product drawing in DXF format: 62240000 EM-240.dxf (1.1 MB)

Drawing for mechanical processing: 62240000 EM-240-G.dxf (631.5 KB)

Milling contours are shown here as a DXF file. (Sub D, USB, HDMI, cable glands, ...)

20.09.2019

### Product information

Euromas II GB.pdf (361.5 KB)

## Matching accessories

---



Rubber feet, self-adhesive

22009000 GF

Polyurethane, 65-75 Shore

Black



Wall brackets, screw-on at rear

22010000 EM-WL



Screw covers

22080000 EM-SA



DIN rail acc. to DIN EN 60715 TH 15

22152301 TS 15

For EM/ET 224, EM/ET 233-236, EM/ET 239-242, B 2617.., B 2736.. (crosswise)



DIN rail acc. to DIN EN 60715 G 32

22322301 TS 32

For EM/ET 224, EM/ET 233-236, EM/ET 239-242, B 2617.., B 2736.. (crosswise)



DIN rail acc. to DIN EN 60715 TH 35

22352301 TS 35

For EM/ET 224, EM/ET 233-236, EM/ET 239-242, B 2617.., B 2736.. (crosswise)



Mounting plates, laminated paper (Pertinax), galvanised steel for version 260

22000900 M

For EM/ET 239-241, M/T 240, M/T 241, M/T 250



Screws (SHR) and distance bolts (DIBLZ) for mounting bosses in plastic enclosures

59006219 SHR Z KA30x6

SD = 3.0 / ND = 2.4-2.6 / KD = 5.3