

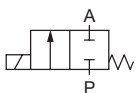


- Direct acting
- Hermetic isolation of fluid from the actuator
- 0 ... 10 bar (0 ... 145 psi)<sup>1)</sup>
- Orifice 2 or 3 mm (0.08 to 0.12 in)
- Manual override as standard

The 6608 analytical solenoid valve combines all state of the art features in a compact design.

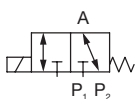
With high reliability, virtually no heat transfer between fluid and coil, low internal volume and Burkert's expertise in supplying customized solutions, these valves are a perfect fit even for the most demanding applications.

Circuit function A



2/2-way valve,  
direct acting,  
normally closed

Circuit function T



3/2-way valve,  
direct acting,  
universal function,  
any flow direction

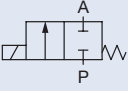
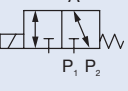
Other circuit functions on request.

Technical data	
<b>Body material</b>	PEEK
<b>Seal material</b>	FFKM (Perfluorelastomer)
<b>Fluids</b>	resistant to neutral and aggressive gases and liquids according our chemical resistance chart; technical vacuum
<b>Fluid temperature</b>	0 °C up to +70 °C (32 °F up to 158 °F)
<b>Ambient temperature</b>	0 °C up to +60 °C (32 °F up to 140 °F)
<b>Max. Viscosity</b>	approx. 21 mm <sup>2</sup> /s
<b>Port connection</b>	Sub-base G 1/8 thread NPT 1/8 thread
<b>Nominal voltage</b>	12 V DC, 24 V DC other voltages on request
<b>Voltage tolerance</b>	± 10%
<b>Power consumption</b>	5 W
<b>Duty cycle</b>	100 % continuously rated
<b>Electrical connection</b>	Rectangular plug flying leads, 500 mm
<b>Manual override</b>	standard
<b>Installation</b>	any, preferred with coil upwards
<b>Protection class</b>	IP40 for Rectangular plug IP54 for leads

<sup>1)</sup> Overpressure to atmospheric pressure



## Ordering chart

Circuit function	Orifice DN [mm]	Body material	Seal material	Voltage [V]	Port connection	Electrical connection	Item no.
	2.0 0.08 in	PEEK	FFKM	12/DC	Sub-base	rectangular plug leads, 500 mm	160 730
					G 1/8 thread	rectangular plug	160 742
					NPT 1/8 thread	rectangular plug	160 829
				24/DC	Sub-base	rectangular plug leads, 500 mm	160 743
					G 1/8 thread	rectangular plug	160 745
					NPT 1/8 thread	rectangular plug	160 830
	3.0 0.12 in	PEEK	FFKM	12/DC	Sub-base	rectangular plug leads, 500 mm	160 746
					G 1/8 thread	rectangular plug	153 135
					NPT 1/8 thread	rectangular plug	160 747
				24/DC	Sub-base	rectangular plug leads, 500 mm	160 831
					G 1/8 thread	rectangular plug	150 825
					NPT 1/8 thread	rectangular plug	150 826
	2.0 0.08 in	PEEK	FFKM	12/DC	Sub-base	rectangular plug leads, 500 mm	160 749
					G 1/8 thread	rectangular plug	160 750
					NPT 1/8 thread	rectangular plug	160 751
				24/DC	Sub-base	rectangular plug leads, 500 mm	160 833
					G 1/8 thread	rectangular plug	160 752
					NPT 1/8 thread	rectangular plug	160 753
	3.0 0.12 in	PEEK	FFKM	12/DC	Sub-base	rectangular plug leads, 500 mm	160 754
					G 1/8 thread	rectangular plug	160 755
					NPT 1/8 thread	rectangular plug	160 834
				24/DC	Sub-base	rectangular plug leads, 500 mm	160 755
					G 1/8 thread	rectangular plug	159 356
					NPT 1/8 thread	rectangular plug	160 756
24/DC	Sub-base	rectangular plug leads, 500 mm	160 835				
	G 1/8 thread	rectangular plug	150 797				
	NPT 1/8 thread	rectangular plug	149 485				
24/DC	Sub-base	rectangular plug leads, 500 mm	160 757				
	G 1/8 thread	rectangular plug	160 836				
	NPT 1/8 thread	rectangular plug	160 836				

- Scope of delivery for rectangular plug version **exclusive** connector (please see list of accessory)
- Manual override as standard

## Accessories

Description	Item no.
Rectangular plug	133 486
5.08 mm	644 068
3 m cable	644 067
300 mm leads	648 231
single contacts for manifold mounting	
Mounting brackets for single valve mounting (set contains 10 clips and 10 screws M4x6)	

To find your nearest Burkert facility, click on the orange box →

[www.burkert.com](http://www.burkert.com)

If case of special conditions, please consult for advice.

We reserve the right to make technical changes without notice.

0512/01\_EU-EN\_00891863