

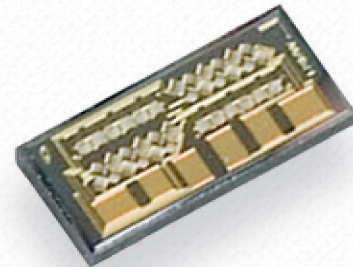
AA745A

MagnetoResistive FreePitch Sensor

The AA745A is a position sensor based on the AnisotropicMagnetoResistive (AMR) effect. The sensor contains two Wheatstone bridges with common ground and supply pin V_{CC} . They are shifted at a relative angle of 45° to one another. Additionally, the sensor layout incorporates PerfectWave technology, i.e. the sensor stripes are designed to reduce harmonic distortions.

A rotating magnetic field in the sensor plane delivers two sinusoidal output signals with the double frequency of the angle α between sensor and magnetic field direction shown in Fig. 1. The function of these signals is $+\sin(2\alpha)$ and $+\cos(2\alpha)$.

The AA745A is available as wafer and in several package options.



Product Overview

Article description	Package	Delivery Type
AA745ABA-LL	Undiced wafer ¹⁾	Waferbox
AA745ACA-LK	Die on wafer ¹⁾	Waferbox
AA745ACA-AC	Bare die	Waffle pack (400)
AA745AKA-AC	SIL6	Waffle pack (90)
AA745AMA-AE	LGA6S	Tape on Reel (2500)

¹⁾ Minimum order quantities apply.

Quick Reference Guide

Symbol	Parameter	Min.	Typ.	Max.	Unit
V_{CC}	Supply voltage	-	5.0	9.0	V
S	Sensitivity ($\alpha_1 = 0^\circ$; $\alpha_2 = 135^\circ$)	2.1	2.35	2.6	mV/deg
V_{off}	Offset voltage per V_{CC}	-2.0	-	+2.0	mV/V
V_{peak}	Signal amplitude per V_{CC}	12.0	13.0	14.0	mV/V
R_s	Sensor resistance	1.35	1.60	1.85	k Ω

Absolute Maximum Ratings

In accordance with the absolute maximum rating system (IEC60134).

Symbol	Parameter	Min.	Max.	Unit
V_{CC}	Supply voltage	-9.0	+9.0	V
T_{amb}	Ambient temperature	-40	+150	$^\circ\text{C}$
T_{stg}	Storage temperature	-65	+150	$^\circ\text{C}$

Stresses beyond those listed under "Absolute maximum ratings" may cause permanent damage to the device. This is a stress rating only and functional operation of the device at these or any other conditions beyond those indicated in the operational sections of this specification is not implied. Exposure to absolute maximum rating conditions for extended periods may affect device reliability.

Features

- Based on the AnisotropicMagnetoResistive (AMR) effect
- Contains two Wheatstone bridges
- Sine and cosine output
- Bond pads on one side
- PerfectWave technology
- Temperature range from -40°C to $+150^\circ\text{C}$ (bare die only)

Advantages

- Contactless angle and position measurement
- Large air gap
- Excellent accuracy
- Position tolerant
- Minimal offset voltage
- Negligible hysteresis

Applications

- Incremental or absolute position measurement (linear and rotary motion)
- Motor commutation
- Rotational speed measurement
- Angle measurement (180° absolute on shaft end)



Magnetic Data

Symbol	Parameter	Conditions	Min.	Typ.	Max.	Unit
H_{ext}	Magnetic field strength ¹⁾		-	25	-	kA/m

¹⁾ The stimulating magnetic field in the sensor plane necessary to ensure the minimum error as specified in note 9.

Electrical Data

$T_{\text{amb}} = 25\text{ °C}$; $H_{\text{ext}} = 25\text{ kA/m}$; $V_{\text{CC}} = 5\text{ V}$; unless otherwise specified.

Symbol	Parameter	Conditions	Min.	Typ.	Max.	Unit
V_{CC}	Supply voltage		-	5.0	-	V
S	Sensitivity ²⁾	$\alpha_1 = 0^\circ$; $\alpha_2 = 135^\circ$	2.1	2.35	2.6	mV/deg
TC_S	Temperature coefficient of sensitivity ³⁾		-0.31	-0.35	-0.39	%/K
V_{off}	Offset voltage per V_{CC}	See Fig. 1	-2.0	-	+2.0	mV/V
$TC_{V_{\text{off}}}$	Temperature coefficient of V_{off} ⁴⁾		-2.0	-	+2.0	($\mu\text{V/V}$)/K
V_{peak}	Signal amplitude per V_{CC} ⁵⁾	See Fig. 1	12.0	13.0	14.0	mV/V
$TC_{V_{\text{peak}}}$	Temperature coefficient of V_{peak} ⁶⁾		-0.31	-0.35	-0.39	%/K
R_S	Bridge resistance ⁷⁾		1.35	1.60	1.85	k Ω
TC_{R_B}	Temperature coefficient of R_B ⁸⁾		0.38	0.42	0.46	%/K

²⁾ Sensitivity changes with angle due to sinusoidal output.

$$\supset \supset TC_S = 100 \cdot \frac{S_{(T_2)} - S_{(T_1)}}{S_{(T_1)} \cdot (T_2 - T_1)} \text{ with } T_1 = -40\text{ °C}; T_2 = +150\text{ °C}.$$

$$\supset \supset TC_{V_{\text{off}}} = \frac{V_{\text{off}(T_2)} - V_{\text{off}(T_1)}}{T_2 - T_1} \text{ with } T_1 = -40\text{ °C}; T_2 = +150\text{ °C}.$$

⁵⁾ Maximal output voltage without offset influences. Periodicity of V_{peak} is $\sin(2\alpha)$ and $\cos(2\alpha)$.

$$\supset \supset TC_{V_{\text{peak}}} = 100 \cdot \frac{V_{\text{peak}(T_2)} - V_{\text{peak}(T_1)}}{V_{\text{peak}(T_1)} \cdot (T_2 - T_1)} \text{ with } T_1 = -40\text{ °C}; T_2 = +150\text{ °C}.$$

⁷⁾ Bridge resistance between pins 8 and 4, 7 and 3, 5 and 1, and 6 and 2.

$$\supset \supset TC_{R_B} = 100 \cdot \frac{R_{B(T_2)} - R_{B(T_1)}}{R_{B(T_1)} \cdot (T_2 - T_1)} \text{ with } T_1 = -40\text{ °C}; T_2 = +150\text{ °C}.$$

Accuracy

$T_{\text{amb}} = 25\text{ °C}$; $H_{\text{ext}} = 25\text{ kA/m}$; $V_{\text{CC}} = 5\text{ V}$; unless otherwise specified.

Symbol	Parameter	Conditions	Min.	Typ.	Max.	Unit
$\Delta\alpha$	Angular error ⁹⁾		0	0.1	0.17	deg
$\Delta\alpha$	Angular error ⁹⁾	$H_{\text{ext}} \geq 40\text{ kA/m}$	0	0.05	0.1	deg
k	Amplitude synchronism ¹⁰⁾		-0.5	0	+0.5	% of V_{peak}

⁹⁾ $\Delta\alpha = |\alpha_{\text{real}} - \alpha_{\text{measured}}|$ without offset influences due to deviations from ideal sinusoidal characteristics.

$$\supset \supset k = 100 - 100 \cdot \frac{V_{\text{peak1}}}{V_{\text{peak2}}}$$

Dynamic Data

Symbol	Parameter	Conditions	Min.	Typ.	Max.	Unit
f	Frequency range		1 ¹¹⁾	-	-	MHz

¹¹⁾ No significant amplitude loss in this frequency range.

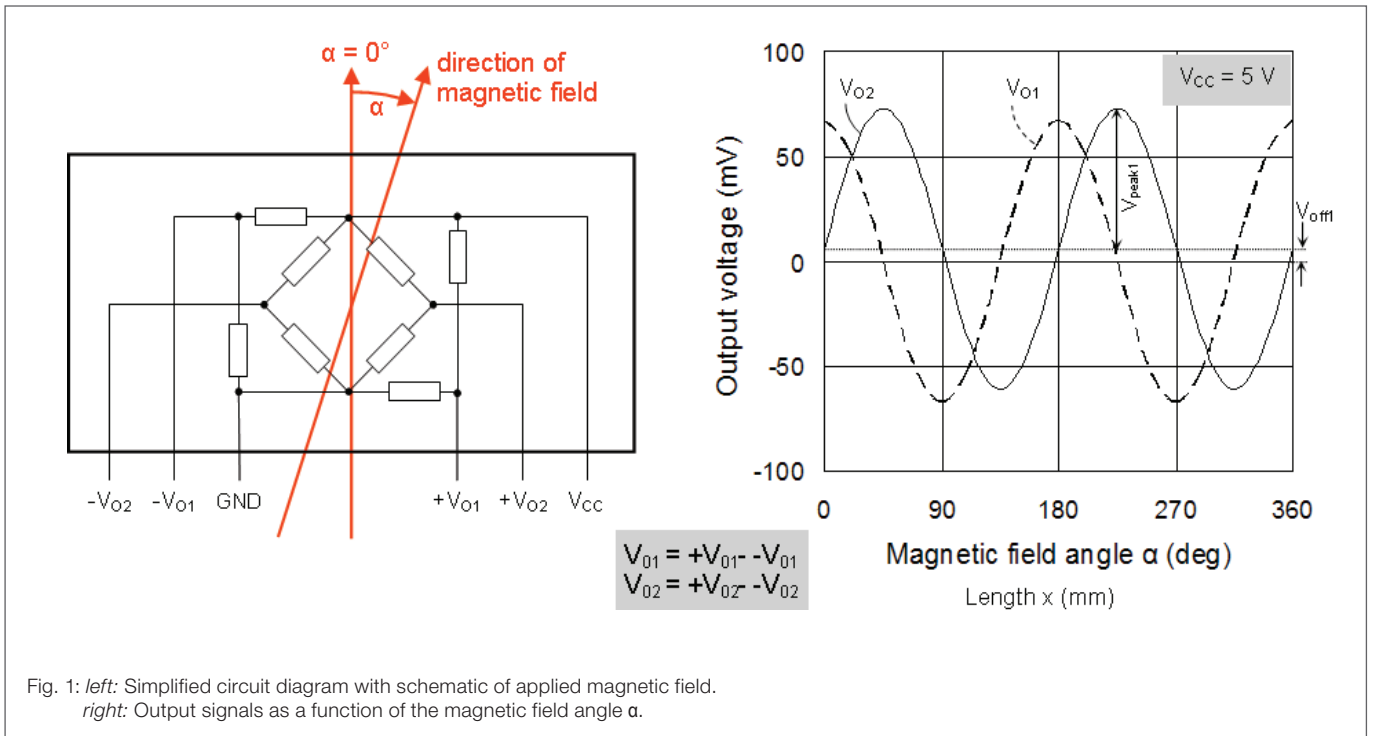


Fig. 1: *left*: Simplified circuit diagram with schematic of applied magnetic field.
right: Output signals as a function of the magnetic field angle α .



Sensors with PerfectWave design provide the best signal quality, highest accuracy and optimal sensor linearity by filtering out higher harmonics in the signal. The linearity of the sensor is assured, even for weak magnetic field measurement.

AA745A as Bare Die

Pinning

Symbol	Parameter	Conditions
1	$-V_{O2}$	Negative output voltage bridge 2
2	$-V_{O1}$	Negative output voltage bridge 1
3	GND	Ground
4	$+V_{O1}$	Positive output voltage bridge 1
5	$+V_{O2}$	Positive output voltage bridge 2
6	V_{CC}	Supply voltage



Fig. 2: AA745ACA.

Dimensions

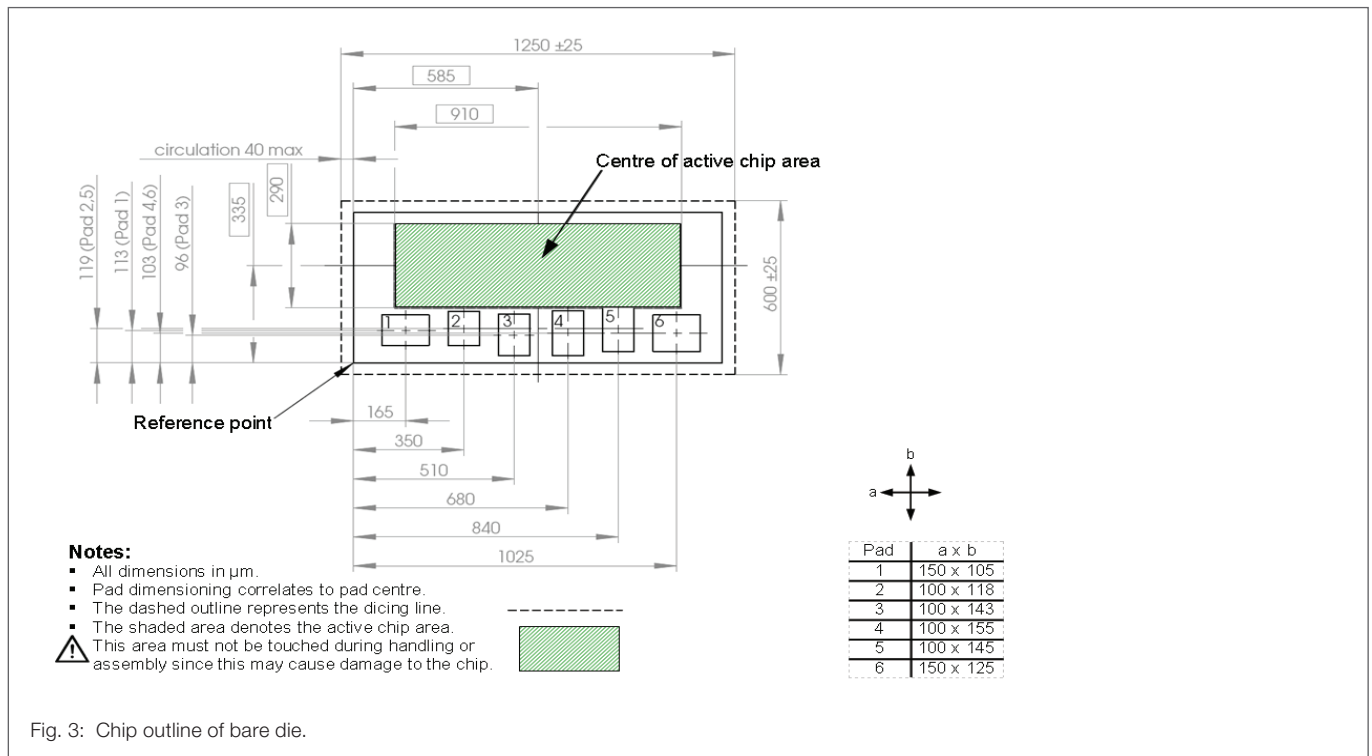


Fig. 3: Chip outline of bare die.

Data for Packaging and Interconnection Technologies

Parameter	Value	Unit
Chip area	$(1.25 \pm 0.1) \times (0.6 \pm 0.1)$	mm
Chip thickness	254 ± 10	μm
Pad diameter (all)	See Fig. 3	μm
Pad thickness	0.4	μm
Pad material	Au	-

AA745AKA SIL6 Package

Pinning

Symbol	Parameter	Conditions
1	$-V_{O2}$	Negative output voltage bridge 2
2	$-V_{O1}$	Negative output voltage bridge 1
3	GND	Ground
4	$+V_{O1}$	Positive output voltage bridge 1
5	$+V_{O2}$	Positive output voltage bridge 2
6	V_{CC}	Supply voltage

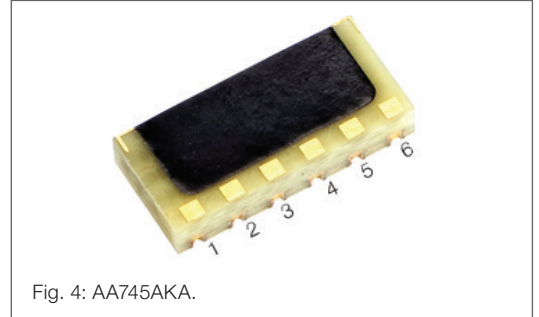


Fig. 4: AA745AKA.

Dimensions

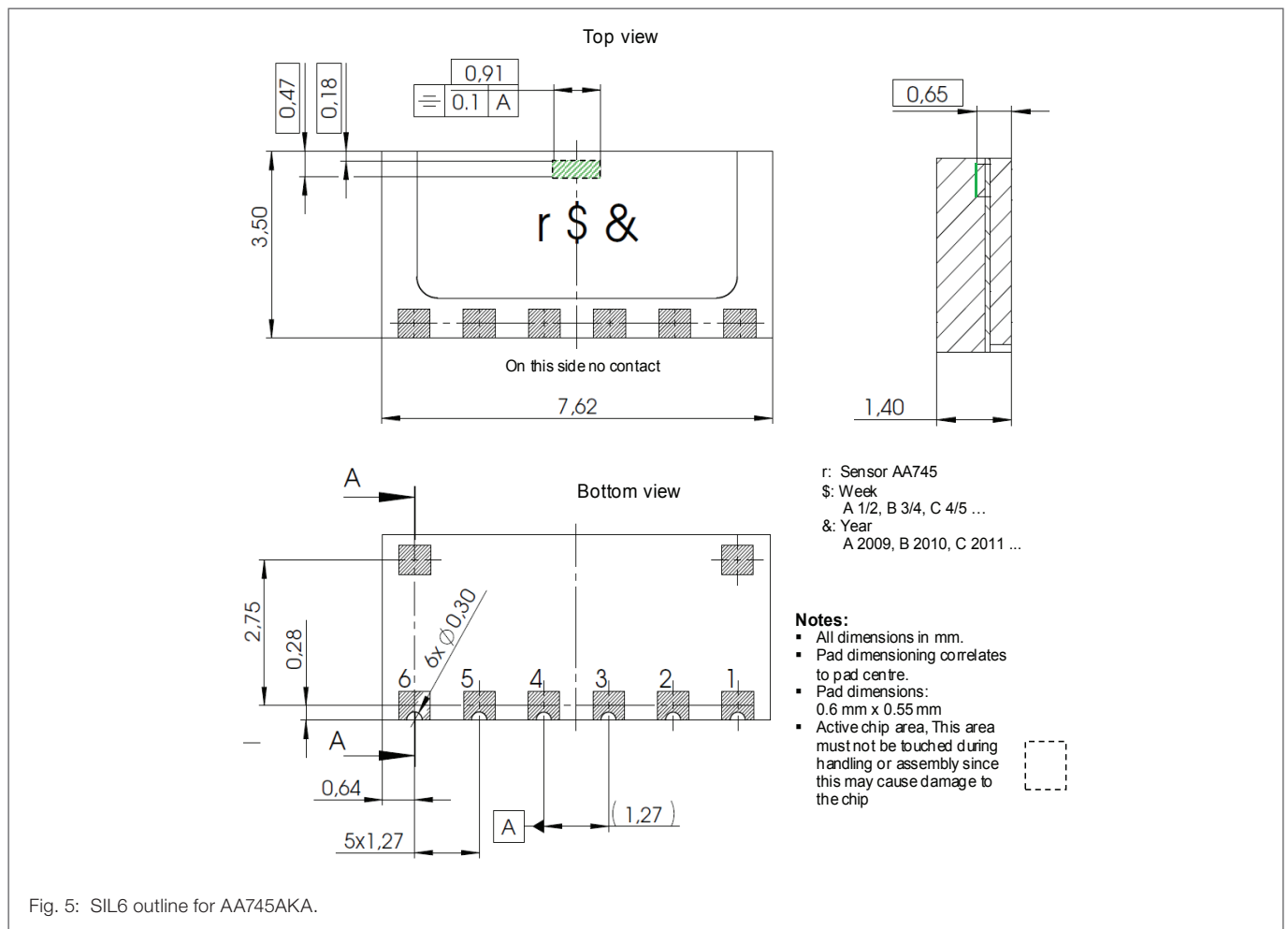


Fig. 5: SIL6 outline for AA745AKA.

AA745AMA LGA6S Package

Pinning

Symbol	Parameter	Conditions
1	+V _{O1}	Positive output voltage bridge 1
2	+V _{O2}	Positive output voltage bridge 2
3	GND	Ground
4	V _{CC}	Supply voltage
5	-V _{O1}	Negative output voltage bridge 1
6	-V _{O2}	Negative output voltage bridge 2
7-8	NC	Not connected

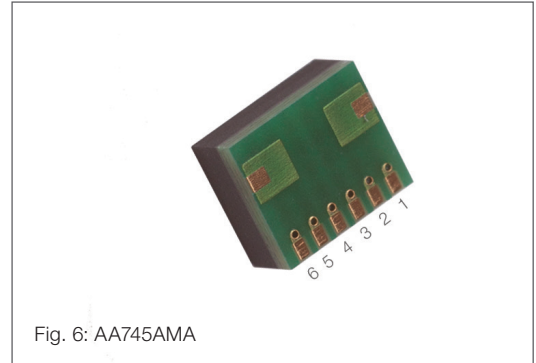


Fig. 6: AA745AMA

Dimensions

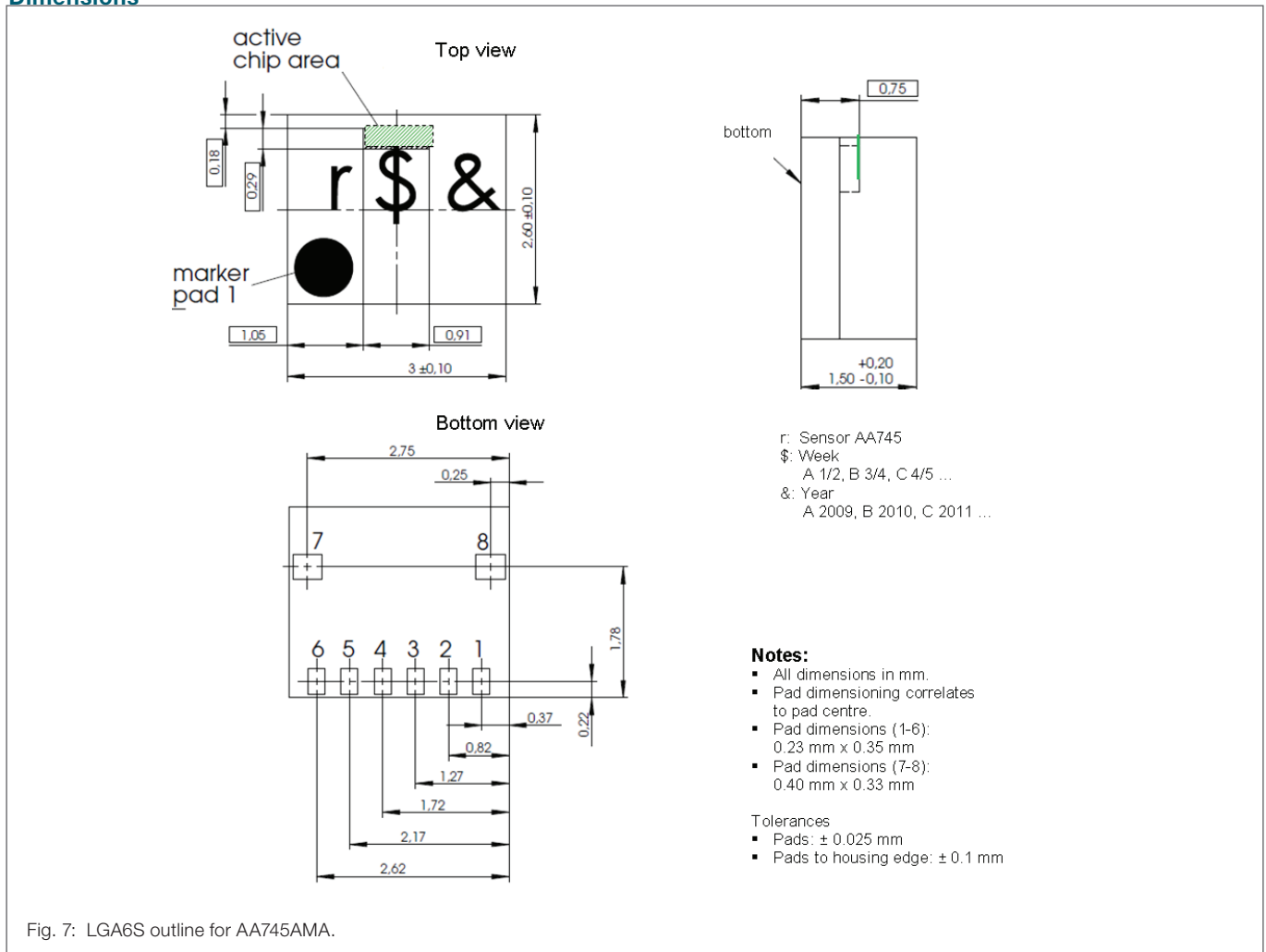


Fig. 7: LGA6S outline for AA745AMA.

General Information

Product Status

Article	Status
AA745ABA-LL	The product is in series production.
AA745ACA-LK	The product is in series production.
AA745ACA-AC	The product is in series production.
AA745AKA-AC	The product is in series production.
AA745AMA-AE	The product is in series production.
Note	The status of the product may have changed since this data sheet was published. The latest information is available on the internet at www.sensitec.com .

Disclaimer

Sensitec GmbH reserves the right to make changes, without notice, in the products, including software, described or contained herein in order to improve design and/or performance. Information in this document is believed to be accurate and reliable. However, Sensitec GmbH does not give any representations or warranties, expressed or implied, as to the accuracy or completeness of such information and shall have no liability for the consequences of use of such information. Sensitec GmbH takes no responsibility for the content in this document if provided by an information source outside of Sensitec products.

In no event shall Sensitec GmbH be liable for any indirect, incidental, punitive, special or consequential damages (including but not limited to lost profits, lost savings, business interruption, costs related to the removal or replacement of any products or rework charges) irrespective the legal base the claims are based on, including but not limited to tort (including negligence), warranty, breach of contract, equity or any other legal theory.

Notwithstanding any damages that customer might incur for any reason whatsoever, Sensitec product aggregate and cumulative liability towards customer for the products described herein shall be limited in accordance with the General Terms and Conditions of Sale of Sensitec GmbH. Nothing in this document may be interpreted or construed as an offer to sell products that is open for acceptance or the grant, conveyance or implication of any license under any copyrights, patents or other industrial or intellectual property rights.

Unless otherwise agreed upon in an individual agreement Sensitec products sold are subject to the General Terms and Conditions of Sales as published at www.sensitec.com.

General Information

Application Information

Applications that are described herein for any of these products are for illustrative purposes only. Sensitec GmbH makes no representation or warranty – whether expressed or implied – that such applications will be suitable for the specified use without further testing or modification.

Customers are responsible for the design and operation of their applications and products using Sensitec products, and Sensitec GmbH accepts no liability for any assistance with applications or customer product design. It is customer's sole responsibility to determine whether the Sensitec product is suitable and fit for the customer's applications and products planned, as well as for the planned application and use of customer's third party customer(s). Customers should provide appropriate design and operating safeguards to minimize the risks associated with their applications and products.

Sensitec GmbH does not accept any liability related to any default, damage, costs or problem which is based on any weakness or default in the customer's applications or products, or the application or use by customer's third party customer(s). Customer is responsible for doing all necessary testing for the customer's applications and products using Sensitec products in order to avoid a default of the applications and the products or of the application or use by customer's third party customer(s).

Sensitec does not accept any liability in this respect.

Life Critical Applications

These products are not qualified for use in life support appliances, aeronautical applications or devices or systems where malfunction of these products can reasonably be expected to result in personal injury.

Copyright © 2015 by Sensitec GmbH, Germany

All rights reserved. No part of this document may be copied or reproduced in any form or by any means without the prior written agreement of the copyright owner. The information in this document is subject to change without notice. Please observe that typical values cannot be guaranteed. Sensitec GmbH does not assume any liability for any consequence of its use.

Sensitec GmbH

Georg-Ohm-Str. 11 · 35633 Lahnau · Germany
Tel. +49 6441 9788-0 · Fax +49 6441 9788-17
www.sensitec.com · sensitec@sensitec.com

