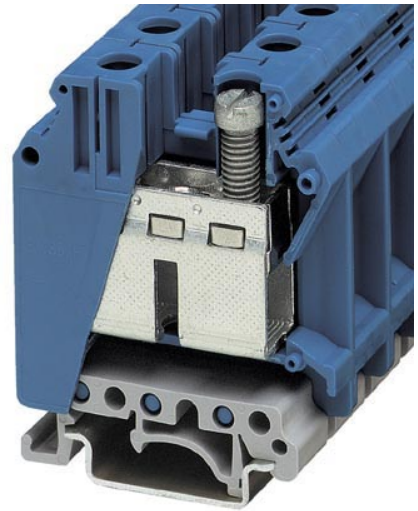



UK 35 BU

Order No.: 3008025



Feed-through terminal block, Connection method: Screw connection,
Cross section: 0.75 mm² - 50 mm², AWG: 18 - 0/1, Width: 16 mm,
Color: blue, Mounting type: NS 35/7.5, NS 35/15, NS 32

Commercial data

| | |
|--------------------------|---|
| EAN |  |
| Pack | 50 |
| Customs tariff | 85369010 |
| Gross weight in pieces | 55.84 g |
| Country of Origin | DE |
| Catalog page information | Page 213 (CL-2005) |

Product notes

WEEE/RoHS-compliant since:
01/01/2003



Please note that the data given here has been taken from the online catalog. For comprehensive information and data, please refer to the user documentation at <http://www.download.phoenixcontact.com>. The General Terms and Conditions of Use apply to Internet downloads.

Technical data

General

| | |
|-----------------------|------|
| Number of levels | 1 |
| Number of connections | 2 |
| Color | blue |

| | |
|---|----|
| Insulating material | PA |
| Inflammability class according to UL 94 | V0 |

Dimensions

| | |
|------------------|---------|
| Width | 16 mm |
| Length | 50 mm |
| Height NS 35/7,5 | 62 mm |
| Height NS 35/15 | 69.5 mm |
| Height NS 32 | 67 mm |

Technical data

| | |
|----------------------------------|---|
| Maximum load current | 150 A (with 50 mm ² conductor cross section) |
| Rated surge voltage | 8 kV |
| Pollution degree | 3 |
| Surge voltage category | III |
| Insulating material group | I |
| Connection in acc. with standard | IEC 60947-7-1 |
| Nominal current I _N | 150 A |
| Nominal voltage U _N | 1000 V |
| Open side panel | nein |

Connection data

| | |
|--|----------------------|
| Conductor cross section solid min. | 0.75 mm ² |
| Conductor cross section solid max. | 50 mm ² |
| Conductor cross section AWG/kcmil min. | 18 |
| Conductor cross section AWG/kcmil max | 0/1 |
| Conductor cross section stranded min. | 0.75 mm ² |
| Conductor cross section stranded max. | 35 mm ² |
| Min. AWG conductor cross section, stranded | 18 |
| Max. AWG conductor cross section, stranded | 2 |
| Conductor cross section stranded, with ferrule without plastic sleeve min. | 0.75 mm ² |
| Conductor cross section stranded, with ferrule without plastic sleeve max. | 35 mm ² |
| Conductor cross section stranded, with ferrule with plastic sleeve min. | 0.75 mm ² |
| Conductor cross section stranded, with ferrule with plastic sleeve max. | 35 mm ² |

| | |
|---|----------------------|
| 2 conductors with same cross section, solid min. | 0.75 mm ² |
| 2 conductors with same cross section, solid max. | 16 mm ² |
| 2 conductors with same cross section, stranded min. | 0.75 mm ² |
| 2 conductors with same cross section, stranded max. | 10 mm ² |
| 2 conductors with same cross section, stranded, TWIN ferrules with plastic sleeve, min. | 0.75 mm ² |
| 2 conductors with same cross section, stranded, TWIN ferrules with plastic sleeve, max. | 6 mm ² |
| 2 conductors with same cross section, stranded, ferrules without plastic sleeve, min. | 0.75 mm ² |
| 2 conductors with same cross section, stranded, ferrules without plastic sleeve, max. | 10 mm ² |
| Connection method | Screw connection |
| Stripping length | 16 mm |
| Internal cylindrical gage | B9 |
| Screw thread | M6 |
| Tightening torque, min | 3.2 Nm |
| Tightening torque max | 3.7 Nm |

Certificates



Certification CSA, GOST, KEMA-KEUR, UL Recognized, GL, KR, NK, PRS, RS, IECCE CB Scheme

Certification Ex: ATEX, cUL Recognized, FM approved, IECEx, INMETRO, GL

Certifications applied for:

Accessories

| Item | Designation | Description |
|------|-------------|-------------|
|------|-------------|-------------|

Assembly

| | | |
|---------|-----------------------------|---|
| 3022218 | CLIPFIX 35 | Snap-on end bracket, for 35 mm NS 35/7.5 or NS 35/15 DIN rail, can be fitted with Zack strip ZB 8 and ZB 8/27, terminal strip marker KLM 2 and KLM, width: 9.5 mm, color: gray |
| 3022276 | CLIPFIX 35-5 | Quick mounting end clamp for NS 35/7,5 DIN rail or NS 35/15 DIN rail, can be fitted with ZB 5 and ZBF 5 zack marker strip, KLM 2, KLM3, and KML3L terminal strip marker, parking option for FBS...5, FBS...6, KSS 5, KSS 6, width: 5.15 mm, color: gray |
| 1201442 | E/UK | End clamp, for assembly on NS 32 or NS 35/7.5 DIN rail |
| 1201413 | E/UK 1 | End clamps, for supporting the ends of double-level and three-level terminal blocks, width: 10 mm, color: gray |
| 1024263 | EA 11 | Single cover, for covering one terminal block, snap fit, cannot be labeled, color: transparent |
| 1201002 | NS 32 PERF 2000MM | G-profile DIN rail, material: Steel, perforated, height 15 mm, width 32 mm, length 2 m |
| 1201015 | NS 32 UNPERF 2000MM | G-profile DIN rail, material: Steel, unperforated, height 15 mm, width 32 mm, length 2 m |
| 0801704 | NS 35/ 7,5 AL UNPERF 2000MM | DIN rail, material: Aluminum, unperforated, height 7.5 mm, width 35 mm, length: 2 m |
| 1206560 | NS 35/ 7,5 CAP | DIN rail end piece, for DIN rail NS 35/7.5 |
| 0801762 | NS 35/ 7,5 CU UNPERF 2000MM | DIN rail, material: Copper, unperforated, height 7.5 mm, width 35 mm, length: 2 m |
| 0801733 | NS 35/ 7,5 PERF 2000MM | DIN rail, material: steel galvanized and passivated with a thick layer, perforated, height 7.5 mm, width 35 mm, length: 2000 mm |
| 0801681 | NS 35/ 7,5 UNPERF 2000MM | DIN rail, material: Steel, unperforated, height 7.5 mm, width 35 mm, length: 2 m |
| 1204119 | NS 35/ 7,5 WH PERF 2000MM | DIN rail 35 mm (NS 35) |
| 1204122 | NS 35/ 7,5 WH UNPERF 2000MM | DIN rail 35 mm (NS 35) |
| 1206421 | NS 35/ 7,5 ZN PERF 2000MM | DIN rail, material: Galvanized, perforated, height 7.5 mm, width 35 mm, length: 2 m |
| 1206434 | NS 35/ 7,5 ZN UNPERF 2000MM | DIN rail, material: Galvanized, unperforated, height 7.5 mm, width 35 mm, length: 2 m |
| 1201756 | NS 35/15 AL UNPERF 2000MM | DIN rail, deep drawn, high profile, unperforated, 1.5 mm thick, material: aluminum, height 15 mm, width 35 mm, length 2000 mm |
| 1206573 | NS 35/15 CAP | DIN rail end piece, for DIN rail NS 35/15 |
| 1201895 | NS 35/15 CU UNPERF 2000MM | DIN rail, material: Copper, unperforated, 1.5 mm thick, height 15 mm, width 35 mm, length: 2 m |
| 1201730 | NS 35/15 PERF 2000MM | DIN rail, material: steel galvanized and passivated with a thick layer, perforated, height 15 mm, width 35 mm, length: 2000 mm |

| | | |
|---------|----------------------------|---|
| 1201714 | NS 35/15 UNPERF 2000MM | DIN rail, material: Steel, unperforated, height 15 mm, width 35 mm, length: 2 m |
| 0806602 | NS 35/15 WH PERF 2000MM | DIN rail 35 mm (NS 35) |
| 1204135 | NS 35/15 WH UNPERF 2000MM | DIN rail 35 mm (NS 35) |
| 1206599 | NS 35/15 ZN PERF 2000MM | DIN rail, material: Galvanized, perforated, height 15 mm, width 35 mm, length: 2 m |
| 1206586 | NS 35/15 ZN UNPERF 2000MM | DIN rail, material: Galvanized, unperforated, height 15 mm, width 35 mm, length: 2 m |
| 1201798 | NS 35/15-2,3 UNPERF 2000MM | DIN rail, material: Steel, unperforated, 2.3 mm thick, height 15 mm, width 35 mm, length: 2 m |
| 0204107 | STL 35/ 5 | Step bracket, Number of positions: 2, Color: white aluminum |
| 0204084 | STL 35/10 | Step bracket, Number of positions: 2, Color: white aluminum |
| 0204097 | STL 35/16 | Step bracket, Number of positions: 2, Color: white aluminum |
| 3008096 | TP-UK 35 | Partition plate, Width: 2 mm, Color: gray |
| 1302215 | TS-K | Separating plate, Length: 22 mm, Height: 22 mm, Color: gray |

Bridges

| | | |
|---------|------------------|---|
| 0203166 | EB 2-15 | Insertion bridge, Number of positions: 2, Color: gray |
| 0205119 | EB 2-15 K/UK 35 | Insertion bridge, Number of positions: 2, Color: gray |
| 0205106 | EB 3-15 K/UK 35 | Insertion bridge, Number of positions: 3, Color: gray |
| 0205135 | EB 10-15 | Insertion bridge, Number of positions: 10, Color: gray |
| 0205096 | EB 10-15 K/UK 35 | Insertion bridge, Number of positions: 10, Color: gray |
| 0201333 | FBI 2-15 | Fixed bridge, Number of positions: 2, Color: silver |
| 0201278 | FBI 3-15 | Fixed bridge, Number of positions: 3, Color: silver |
| 0205203 | KBI- 15 | Chain bridge, Number of positions: 1, Color: silver |
| 0205232 | SBH 2-15 | Switching jumper, Number of positions: 2, Color: silver |

General

| | | |
|---------|-----------|---------------------------------------|
| 0800886 | E/NS 35 N | End clamp, width: 9.5 mm, color: gray |
|---------|-----------|---------------------------------------|

Marking

| | | |
|---------|-----------|--|
| 1004241 | WS 4-15 | Warning label, Plate, orange, labeled, Mounting type: Screws, rivets, For terminal block width: 15 mm |
| 1004445 | WS 5-15 | Warning label, Plate, orange, labeled, Mounting type: Screws, rivets, For terminal block width: 15 mm |
| 0824945 | ZB 15 CUS | Zack marker strip, Can be ordered: Strip, white, Labeled according to customer specifications, Mounting type: Snap into tall marker groove, For terminal block width: 15.2 mm, Lettering field: 10.5 x 15.1 mm |

| | | |
|---------|------------------|---|
| 0811972 | ZB 15:UNBEDRUCKT | Zack marker strip, Strip, white, Unlabeled, Can be labeled with: Plotter, Mounting type: Snap into tall marker groove, For terminal block width: 15.2 mm, Lettering field: 10.5 x 15.1 mm |
|---------|------------------|---|

Plug/Adapter

| | | |
|---------|-----------|--------------------------------------|
| 0311634 | PS-IH BK | Insulating sleeve, Color: black |
| 0311582 | PS-IH BU | Insulating sleeve, Color: blue |
| 0311605 | PS-IH GN | Insulating sleeve, Color: green |
| 0311621 | PS-IH GY | Insulating sleeve, Color: gray |
| 0311579 | PS-IH RD | Insulating sleeve, Color: red |
| 0311618 | PS-IH VT | Insulating sleeve, Color: violet |
| 0311566 | PS-IH WH | Insulating sleeve, Color: white |
| 0311595 | PS-IH YE | Insulating sleeve, Color: yellow |
| 0311647 | PS-MT | Test plugs |
| 0205290 | PSB 6/5/6 | Female test connector, Color: silver |

Address

PHOENIX CONTACT Ltd
Halesfield 13
Telford / Shropshire / TF7 4PG,England
Phone 01952 681 700
Fax 01952 681 799
<http://www.phoenixcontact.co.uk>



Phoenix Contact Ltd.
Technical modifications reserved;