

Most Advanced Instrument in the Wavetek Family of LAN Cable Testers

The LT 8600 is a 300 MHz Level III high-performance cable tester that exceeds the requirements for emerging CAT 6/Class E testing standards.

The competitive nature of the cable installation market demands that you are prepared to complete testing activities for every type of network design. The LT 8600 allows you to perform all required tests, including tests on emerging CAT 6/Class E standards, helping you keep pace with new business opportunities.

Now Supports Emerging CAT 6/Class E Standards and More!

- Tests up to 300 MHz exceeding the requirement for emerging CAT 6/Class E standards
- Performs all advanced Power Sum measurements up to 300 MHz
- Supports up to 15 different tests individually or in a test suite
- Supports identification of Distance-to-Fault
- Options for single-mode and multimode fiber optic and talkset capabilities
- LT-Record Manager software supports all record keeping, reporting and certification requirements
- Easy-to-use button interface
- Investment Protection Program allows you to upgrade to LT 8600
- Backed by Wavetek's world class customer service



SPECIFICATIONS TABLE

Parameter	Range	Resolution	Accuracy
Length	0-1100 ft.	1.0 ft.	±(3%+3 ft.)
Delay	0-8000 ns	1 ns	±(3% + 1 ns)
Average Impedance	35-180 Ω	0.1 Ω	±(3% + 1 Ω)
Capacitance (Bulk)	0-100 nF	1 pF or 3 dig	±(2% + 20 pF)
Capacitance (per ft.)	0-100 pF/ft.	0.1 pF	±(2% + 1 pF)
DC Loop Resistance	0-200 Ω	0.1 Ω	±(1% + 2 Ω)
Attenuation	1-300 MHz 0 to limit (FEXT) +5dB	0.1 dB	Level III
NEXT	1-300 MHz 0 to limit (FEXT) +5dB	0.1 dB	Level III
Return Loss	1-300 MHz 0 to limit (FEXT) +5dB	0.1 dB	Level III
ELFEXT	1-300 MHz 0 to limit (FEXT) +5dB	0.1 dB	Level III

Comprehensive Testing Capabilities For Today and Tomorrow.

Price/Performance

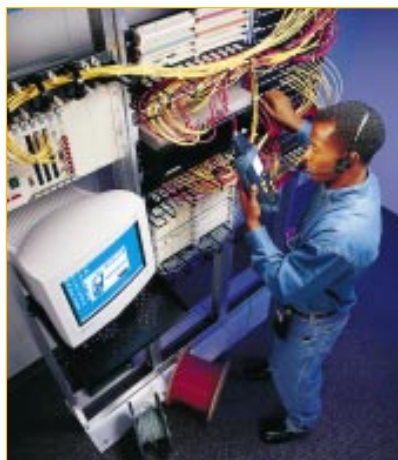
Price and performance go hand in hand in today's competitive market place. Wavetek is committed to providing the most flexible testing capabilities to meet your needs.

Future Proof Your Equipment Investment

Wavetek's *Investment Protection* program lets you use the LT 8600 for testing CAT 5/5e and draft CAT 6/Class E standards when you are ready.

Supported By The Best

In 1998, Wavetek Corporation and Wandel & Goltermann merged to become the world's second largest manufacturer and distributor of



communications test equipment. Wandel & Goltermann is the world leader in providing communications testers for telecom networks, enterprise networks, multimedia and wireless networks. Because of the new combined strength of Wavetek Wandel Goltermann, you can expect superior quality assurance and customer service from Wavetek's family of LAN cable testers.

See Your Wavetek Distributor For a Free Cable Tester Demonstration Today.

Wavetek Sales Offices

North & South America
Wavetek Corporation
LAN Division
9045 Balboa Avenue
San Diego, CA 92123, U.S.A.
Tel: (1) 858-279-2955
Fax: (1) 858-278-5141
Toll free: (800) 854-2708

Germany
Wavetek GmbH
Tel: (49) 89-996-410
Fax: (49) 89-996-41160

Hong Kong
Wavetek Hong Kong Ltd.
Tel: (852) 2528-6283
Fax: (852) 2529-5593

United Kingdom
Wavetek Ltd.
Tel: (44) 1603-256-600
Fax: (44) 1603-256-762

Web Site: www.wavetek.com
E-mail: lansupport@wavetek.com



Storage Capacity:	1,500 Autotests
Test Standard	TIA/EIA 568A, TSB67
Compliance:	TSB95 (draft), CAT 6 (draft) ISO 11801 Class C, D & E (draft) AS/NZS 3080 IEEE 802.3 Ethernet IEEE 802.5 Token Ring EN50173, DIN 44312-1
Cable Types:	UTP/ScTP/FTP; CAT 3/5/5E/6; ISO C/D/E (Link & Channel) IBM STP Type 1,2,6, Coax
Dimensions:	10" x 4.25" x 2.5"
(Display & Remote)	250mm x 108mm x 64mm
Weight:	1.75 lb (800g)-display 1.6 lb (728g)-remote
Battery Packs:	NiMH (rechargeable)
Typical Oper. Life (Battery):	8 hrs
Max. Operating Temp:	0°C - 50°C
Max. Storage Temp:	-20°C to + 70°C
Humidity:	5 - 90% noncondensing

ACCESSORIES AND OPTIONS

LT8110	Set of 2 110-Block Adapters
LT8IBMA	Set of 2 Token-Ring Adapters
LT8COAXA	Kit Coaxial Adapters
LT8DCC	Deluxe hard-shell carrying case
LT8TALKSET	Set of 2 earphone/microphone headsets
FiberKit+850	Fiber optic cable test kit: Includes power meter and 850nm Multimode LED light source modules, ST adapters, user guide, and case
FiberKit+MM	Same as above except with Dual Wavelength 850nm/1300nm LED Light Source module
FiberKit+ALL	Includes all of +MM kit above, plus 1310nm and 1550nm Single-mode laser light source modules
542SP	Tone sensing speaker probe
LT8BATTPACK	Extra NiMH battery
LT8BTCHG120	120V dual-bay quick battery charger
LT8BTCHG240	240V dual-bay quick battery charger

The Only Cable Testers You'll Ever Need™

Your Local Representative: