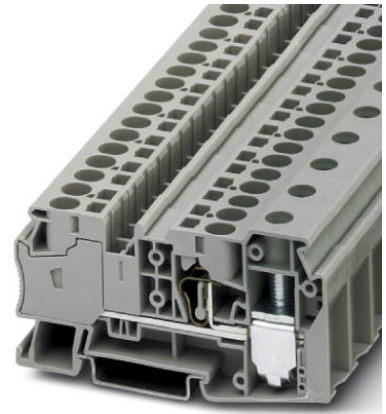



STU 35/ 4X10

Order No.: 3033126



Feed-through terminal block, Connection method: Screw connection,
Cross section: 1.5 mm² - 50 mm², AWG: 16 - 1/0, Width: 16.2 mm,
Color: gray, Mounting type: NS 35/7.5, NS 35/15

Commercial data

| | |
|--------------------------|--|
| EAN |  4 046356 094078 |
| Pack | 25 |
| Customs tariff | 85369010 |
| Gross weight in pieces | 58.70 g |
| Country of Origin | CN |
| Catalog page information | Page 205 (CL1-2011) |

Product notes

WEEE/RoHS-compliant since:
14/09/2005



Please note that the data given here has been taken from the online catalog. For comprehensive information and data, please refer to the user documentation at <http://www.download.phoenixcontact.com>. The General Terms and Conditions of Use apply to Internet downloads.

Technical data**General**

| | |
|---|------|
| Number of levels | 1 |
| Number of connections | 3 |
| Color | gray |
| Insulating material | PA |
| Inflammability class according to UL 94 | V0 |

Dimensions

| | |
|------------------|---------|
| Width | 16.2 mm |
| Length | 86 mm |
| Height NS 35/7,5 | 46.8 mm |
| Height NS 35/15 | 54.3 mm |

Technical data

| | |
|---|-------------------------------------|
| Rated surge voltage | 8 kV |
| Pollution degree | 3 |
| Surge voltage category | III |
| Insulating material group | I |
| Connection in acc. with standard | IEC 60947-7-1 |
| Nominal current I_N | 125 A |
| Nominal voltage U_N | 1000 V |
| Open side panel | nein |
| Shock protection test specification | DIN EN 50274 (VDE 0660-514):2002-11 |
| Back of the hand protection | guaranteed |
| Finger protection | guaranteed |
| Surge voltage test setpoint | 9.8 kV |
| Result of surge voltage test | Test passed |
| Power frequency withstand voltage setpoint | 2 kV |
| Result of power-frequency withstand voltage test | Test passed |
| Checking the mechanical stability of terminal points (5 x conductor connection) | Test passed |
| Bending test rotation speed | 10 rpm |
| Bending test turns | 135 |
| Bending test conductor cross section/weight | 1.5 mm ² / 0.4 kg |
| | 35 mm ² / 6.8 kg |
| | 50 mm ² / 9.5 kg |
| Result of bending test | Test passed |
| Conductor cross section tensile test | 1.5 mm ² |
| Tractive force setpoint | 40 N |
| Conductor cross section tensile test | 35 mm ² |
| | 50 mm ² |
| Tractive force setpoint | 236 N |
| Tensile test result | Test passed |

| | |
|---|--|
| Tight fit on carrier | NS 35/7.5 |
| Setpoint | 10 N |
| Result of tight fit test | Test passed |
| Requirements, voltage drop | ≤ 1.6 mV |
| Result of voltage drop test | Test passed |
| Temperature-rise test | Test passed |
| Conductor cross section short circuit testing | 10 mm ² |
| Short-time current | 1.2 kA |
| Conductor cross section short circuit testing | 6 mm ² |
| Short-time current | 0.72 kA |
| Short circuit stability result | Test passed |
| Ageing test for screwless modular terminal block temperature cycles | 192 |
| Result of aging test | Test passed |
| Proof of thermal characteristics (needle flame) effective duration | 30 s |
| Result of thermal test | Test passed |
| Test specification, oscillation, broadband noise | DIN EN 50155 (VDE 0115-200):2008-03 |
| Test spectrum | Service life test category 1, class B, on vehicle body |
| Test frequency | $f_1 = 5$ Hz to $f_2 = 150$ Hz |
| ASD level | 0.02 g ² /Hz |
| Acceleration | 0.8 g |
| Test duration per axis | 5 h |
| Test directions | X-, Y- and Z-axis |
| Oscillation, broadband noise test result | Test passed |
| Test specification, shock test | DIN EN 50155 (VDE 0115-200):2008-03 |
| Shock form | Half-sine |
| Acceleration | 5 g |
| Shock duration | 30 ms |
| Number of shocks per direction | 3 |
| Test directions | X-, Y- and Z-axis (pos. and neg.) |
| Shock test result | Test passed |
| Temperature index, insulating material (DIN EN 60216-1 (VDE 0304-21)) | 130 °C |
| Static insulating material application in cold | -60 °C |

Connection data

| | |
|---|---------------------|
| Conductor cross section solid min. | 1.5 mm ² |
| Conductor cross section solid max. | 50 mm ² |
| Conductor cross section stranded min. | 1.5 mm ² |
| Conductor cross section stranded max. | 35 mm ² |
| Conductor cross section AWG/kcmil min. | 16 |
| Conductor cross section AWG/kcmil max | 1/0 |
| Conductor cross section stranded, with ferrule without plastic sleeve min. | 1.5 mm ² |
| Conductor cross section stranded, with ferrule without plastic sleeve max. | 35 mm ² |
| Conductor cross section stranded, with ferrule with plastic sleeve min. | 1.5 mm ² |
| Conductor cross section stranded, with ferrule with plastic sleeve max. | 35 mm ² |
| 2 conductors with same cross section, solid min. | 1.5 mm ² |
| 2 conductors with same cross section, solid max. | 16 mm ² |
| 2 conductors with same cross section, stranded min. | 1.5 mm ² |
| 2 conductors with same cross section, stranded max. | 10 mm ² |
| 2 conductors with same cross section, stranded, ferrules without plastic sleeve, min. | 1.5 mm ² |
| 2 conductors with same cross section, stranded, ferrules without plastic sleeve, max. | 10 mm ² |
| 2 conductors with same cross section, stranded, TWIN ferrules with plastic sleeve, min. | 1.5 mm ² |
| 2 conductors with same cross section, stranded, TWIN ferrules with plastic sleeve, max. | 10 mm ² |
| Connection method | Screw connection |
| Stripping length | 18 mm |
| Internal cylindrical gage | B9 |
| Tightening torque, min | 3.2 Nm |
| Tightening torque max | 3.7 Nm |

Certificates



Certification

GOST, UL Recognized

Certifications applied for:

Certification Ex:

Accessories

| Item | Designation | Description |
|-----------------|-----------------------------|---|
| Assembly | | |
| 3022218 | CLIPFIX 35 | Snap-on end bracket, for 35 mm NS 35/7.5 or NS 35/15 DIN rail, can be fitted with Zack strip ZB 8 and ZB 8/27, terminal strip marker KLM 2 and KLM, width: 9.5 mm, color: gray |
| 3022276 | CLIPFIX 35-5 | Quick mounting end clamp for NS 35/7,5 DIN rail or NS 35/15 DIN rail, can be fitted with ZB 5 and ZBF 5 zack marker strip, KLM 2, KLM3, and KML3L terminal strip marker, parking option for FBS...5, FBS...6, KSS 5, KSS 6, width: 5.15 mm, color: gray |
| 3036738 | DP PS-6 | Spacer plate, Color: red |
| 1201442 | E/UK | End clamp, for assembly on NS 32 or NS 35/7.5 DIN rail |
| 1201413 | E/UK 1 | End clamps, for supporting the ends of double-level and three-level terminal blocks, width: 10 mm, color: gray |
| 0801704 | NS 35/ 7,5 AL UNPERF 2000MM | DIN rail, material: Aluminum, unperforated, height 7.5 mm, width 35 mm, length: 2 m |
| 1206560 | NS 35/ 7,5 CAP | DIN rail end piece, for DIN rail NS 35/7.5 |
| 0801762 | NS 35/ 7,5 CU UNPERF 2000MM | DIN rail, material: Copper, unperforated, height 7.5 mm, width 35 mm, length: 2 m |
| 0801733 | NS 35/ 7,5 PERF 2000MM | DIN rail, material: steel galvanized and passivated with a thick layer, perforated, height 7.5 mm, width 35 mm, length: 2000 mm |
| 0801681 | NS 35/ 7,5 UNPERF 2000MM | DIN rail, material: Steel, unperforated, height 7.5 mm, width 35 mm, length: 2 m |
| 1204119 | NS 35/ 7,5 WH PERF 2000MM | DIN rail 35 mm (NS 35) |
| 1204122 | NS 35/ 7,5 WH UNPERF 2000MM | DIN rail 35 mm (NS 35) |
| 1206421 | NS 35/ 7,5 ZN PERF 2000MM | DIN rail, material: Galvanized, perforated, height 7.5 mm, width 35 mm, length: 2 m |
| 1206434 | NS 35/ 7,5 ZN UNPERF 2000MM | DIN rail, material: Galvanized, unperforated, height 7.5 mm, width 35 mm, length: 2 m |
| 1201756 | NS 35/15 AL UNPERF 2000MM | DIN rail, deep drawn, high profile, unperforated, 1.5 mm thick, material: aluminum, height 15 mm, width 35 mm, length 2000 mm |
| 1206573 | NS 35/15 CAP | DIN rail end piece, for DIN rail NS 35/15 |
| 1201895 | NS 35/15 CU UNPERF 2000MM | DIN rail, material: Copper, unperforated, 1.5 mm thick, height 15 mm, width 35 mm, length: 2 m |

| | | |
|---------|----------------------------|--|
| 1201730 | NS 35/15 PERF 2000MM | DIN rail, material: steel galvanized and passivated with a thick layer, perforated, height 15 mm, width 35 mm, length: 2000 mm |
| 1201714 | NS 35/15 UNPERF 2000MM | DIN rail, material: Steel, unperforated, height 15 mm, width 35 mm, length: 2 m |
| 0806602 | NS 35/15 WH PERF 2000MM | DIN rail 35 mm (NS 35) |
| 1204135 | NS 35/15 WH UNPERF 2000MM | DIN rail 35 mm (NS 35) |
| 1206599 | NS 35/15 ZN PERF 2000MM | DIN rail, material: Galvanized, perforated, height 15 mm, width 35 mm, length: 2 m |
| 1206586 | NS 35/15 ZN UNPERF 2000MM | DIN rail, material: Galvanized, unperforated, height 15 mm, width 35 mm, length: 2 m |
| 1201798 | NS 35/15-2,3 UNPERF 2000MM | DIN rail, material: Steel, unperforated, 2.3 mm thick, height 15 mm, width 35 mm, length: 2 m |

Bridges

| | | |
|---------|----------|---|
| 3030284 | FBS 2-8 | Plug-in bridge, Number of positions: 2, Color: red |
| 3030297 | FBS 3-8 | Plug-in bridge, Number of positions: 3, Color: red |
| 3030307 | FBS 4-8 | Plug-in bridge, Number of positions: 4, Color: red |
| 3030310 | FBS 5-8 | Plug-in bridge, Number of positions: 5, Color: red |
| 3030323 | FBS 10-8 | Plug-in bridge, Number of positions: 10, Color: red |

General

| | | |
|---------|-----------|---------------------------------------|
| 0800886 | E/NS 35 N | End clamp, width: 9.5 mm, color: gray |
|---------|-----------|---------------------------------------|

Marking

| | | |
|---------|------------------|--|
| 0811228 | X-PEN 0,35 | Marker pen without ink cartridge, for manual labeling of markers, labeling extremely wipe-proof, line thickness 0.35 mm |
| 0824945 | ZB 15 CUS | Zack marker strip, Can be ordered: Strip, white, Labeled according to customer specifications, Mounting type: Snap into tall marker groove, For terminal block width: 15.2 mm, Lettering field: 10.5 x 15.1 mm |
| 0811972 | ZB 15:UNBEDRUCKT | Zack marker strip, Strip, white, Unlabeled, Can be labeled with: Plotter, Mounting type: Snap into tall marker groove, For terminal block width: 15.2 mm, Lettering field: 10.5 x 15.1 mm |

Plug/Adapter

| | | |
|---------|-------------|---|
| 3047138 | AGK 4-UT 35 | Pick-off terminal block, Connection method: Screw connection, Cross section: 0.14 mm ² - 6 mm ² , AWG: 26 - 10, Width: 8.2 mm, Height: 34.7 mm, Color: gray, Mounting type: On base element |
| 0201731 | MPS-IH BK | Insulating sleeve, Color: black |
| 0201689 | MPS-IH BU | Insulating sleeve, Color: blue |
| 0201702 | MPS-IH GN | Insulating sleeve, Color: green |
| 0201728 | MPS-IH GY | Insulating sleeve, Color: gray |

| | | |
|---------|-----------------|---|
| 0201676 | MPS-IH RD | Insulating sleeve, Color: red |
| 0201663 | MPS-IH WH | Insulating sleeve, Color: white |
| 0201692 | MPS-IH YE | Insulating sleeve, Color: yellow |
| 0201744 | MPS-MT | Test plugs |
| 3030996 | PS-6 | Test adapter, Color: red |
| 3038736 | PS-6/2,3MM RD | Test plugs, Color: red |
| 3030860 | RB ST 6-(2,5/4) | Reducing bridge, Number of positions: 2, Color: red |

Tools

| | | |
|---------|---------------|---|
| 1206612 | SZF 3-1,0X5,5 | Actuation tool, for ST terminal blocks, also suitable for use as a bladed screwdriver, size: 1.0 x 5.5 x 150 mm, 2-component grip, with non-slip grip |
|---------|---------------|---|

Drawings

Circuit diagram



Address

PHOENIX CONTACT Ltd
Halesfield 13
Telford / Shropshire / TF7 4PG, England
Phone 01952 681 700
Fax 01952 681 799
<http://www.phoenixcontact.co.uk>



Phoenix Contact Ltd.
Technical modifications reserved;