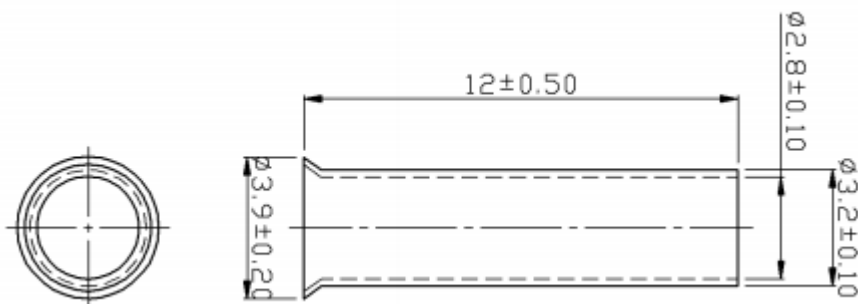


Datasheet

Crimp Bootlace Ferrule 12mm Pin Length, 12 AWG Wire Size

RS Stock number [211-4319](#)

Dimensions: (mm)



Specifications

- Contact Material: Copper
- Contact Plating: Tin
- Insulation: Uninsulated
- Number of Entries 1
- Overall Length: 12mm
- Pin Diameter: 3.9mm
- Pin Length: 12mm
- Wire Size: 12 AWG