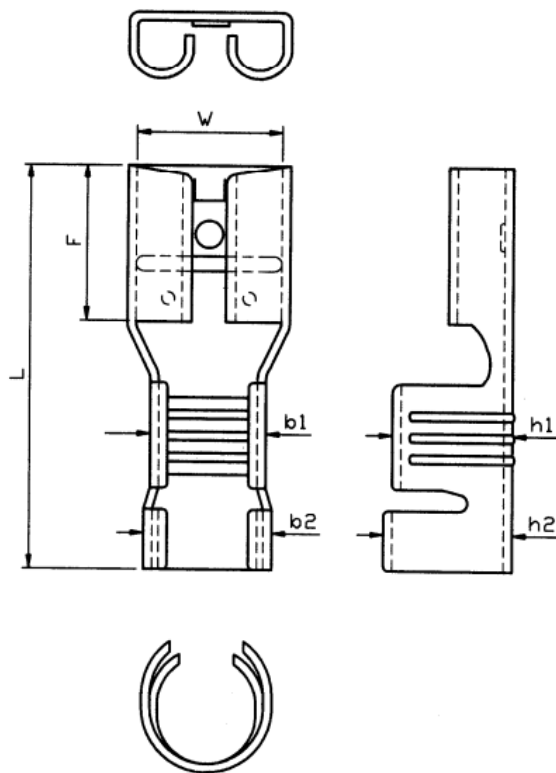


# Datasheet

## RS Crimp Receptacle, 6.4 x 0.8mm, 12 → 10 AWG, Tin Plated

RS Stock number [488-1263](#)

### Dimensions (mm)



Tolerance/ Item	NEMA TAB ("d2)	W±0.2	F±0.3	L±1.0	B1±0.5	B2±0.5	H1±0.5	H2±0.5
Size	.032*250) (0.8*6.35)	6.3	8.0	20.0	3.0	4.8	3.2	4.5

### Specifications

- Terminal Material: Brass/ Tin
- Electrical Current: 24 Amp
- Wire Range: 12-10 A.W.G (2.5-6mm<sup>2</sup>)