


Ordering number CA12764_FLARE-MINI-A

Family	Flare	FWHM	12+84 degrees
Type	Assembly	Efficiency	93 %
LED	Oslon SSL 80	cd/lm	2.000
Color	Clear	Gerber File	Available
Diameter	16 mm		
Height	9.1 mm		
Style	Round		
Optic Material	PMMA		
Holder Material	-		
Fastening	Tape		
Status	Ready		


Ordering number CA12838_FLARE-MINI-A-PIN

Family	Flare	FWHM	12+84 degrees
Type	Assembly	Efficiency	93 %
LED	Oslon SSL 80	cd/lm	2.000
Color	Clear	Gerber File	Available
Diameter	16 mm		
Height	9.1 mm		
Style	Round		
Optic Material	PMMA		
Holder Material	-		
Fastening	Pin, tape		
Status	Ready		


Ordering number C12763_FLARE-MINI-A

Family	Flare	FWHM	13+81 degrees
Type	Lens	Efficiency	93 %
LED	Oslon SSL 80	cd/lm	2.000
Color	Clear	Gerber File	Available
Diameter	16 mm		
Height	8.6 mm		
Style	Round		
Optic Material	PMMA		
Holder Material	-		
Fastening	Glue		
Status	Ready		


Ordering number C12837_FLARE-MINI-A-PIN

Family	Flare	FWHM	13+81 degrees
Type	Lens	Efficiency	93 %
LED	Oslon SSL 80	cd/lm	2.000
Color	Clear	Gerber File	Available
Diameter	16 mm		
Height	8.6 mm		
Style	Round		
Optic Material	PMMA		
Holder Material	-		
Fastening	Pin, glue		
Status	Ready		



Ordering number	CA10932		
Description	1		
Family	Flare	FWHM	83+11 degrees
Type	Assembly	Efficiency	93 %
LED	Oslon SSL 80	cd/lm	2.200
Color	Clear	Gerber File	Available
Diameter	29 x 22.8 mm		
Height	12.84 mm		
Style	Rectang		
Optic Material	PMMA		
Holder Material	-		
Fastening	-		
Status	Ready		

NOTE: The typical divergence will be changed by different color, chip size and chip position tolerance. The typical total divergence is the full angle measured where the luminous intensity is half of the peak value.



PRODUCT DATASHEET Flare series

last update 2/4/2013



GENERAL INFORMATION

- Product series especially designed & optimized for Oslon SSL 80 series of LEDs.
- Special care taken to make light distribution as uniform as possible.
- Lens material optical grade PMMA with high UV and temperature resistance. Allows use of high current and temperature conditions.

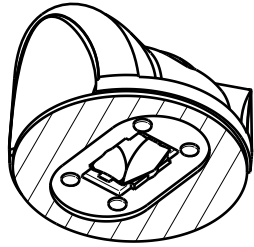
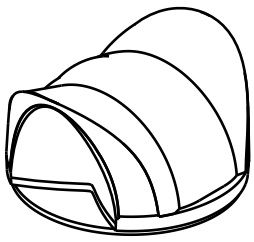
Please find more information about used material from below:

http://ledil.fi/sites/default/files/Documents/Technical/Material/PMMA%20N%20UL94_Yellow%20Card.pdf

<http://ledil.fi/sites/default/files/Documents/Technical/Material/PMMA%20N%20PLEXIGLAS-Datasheet.pdf>

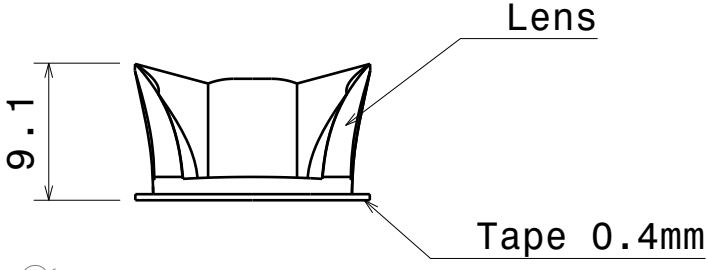
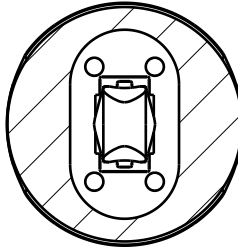
D C B A

4



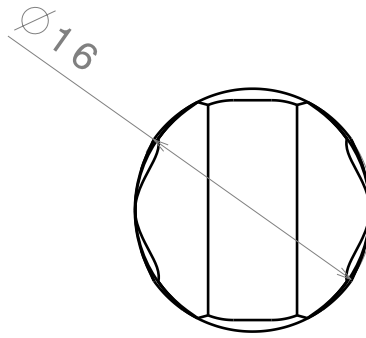
4

3



3

2




2

Material:
 Lens: PMMA
 Tape: PU Foam

Tolerances for dimensions:
 0-20mm tolerance value +/-0.1mm
 21-45mm tolerance value +/-0.2mm
 46-90mm tolerance value +/-0.3mm
 91-100mm tolerance value +/-0.4mm
 101-mm tolerance value +/-0.5mm

Note:
 Must use external positioning
 over light source.

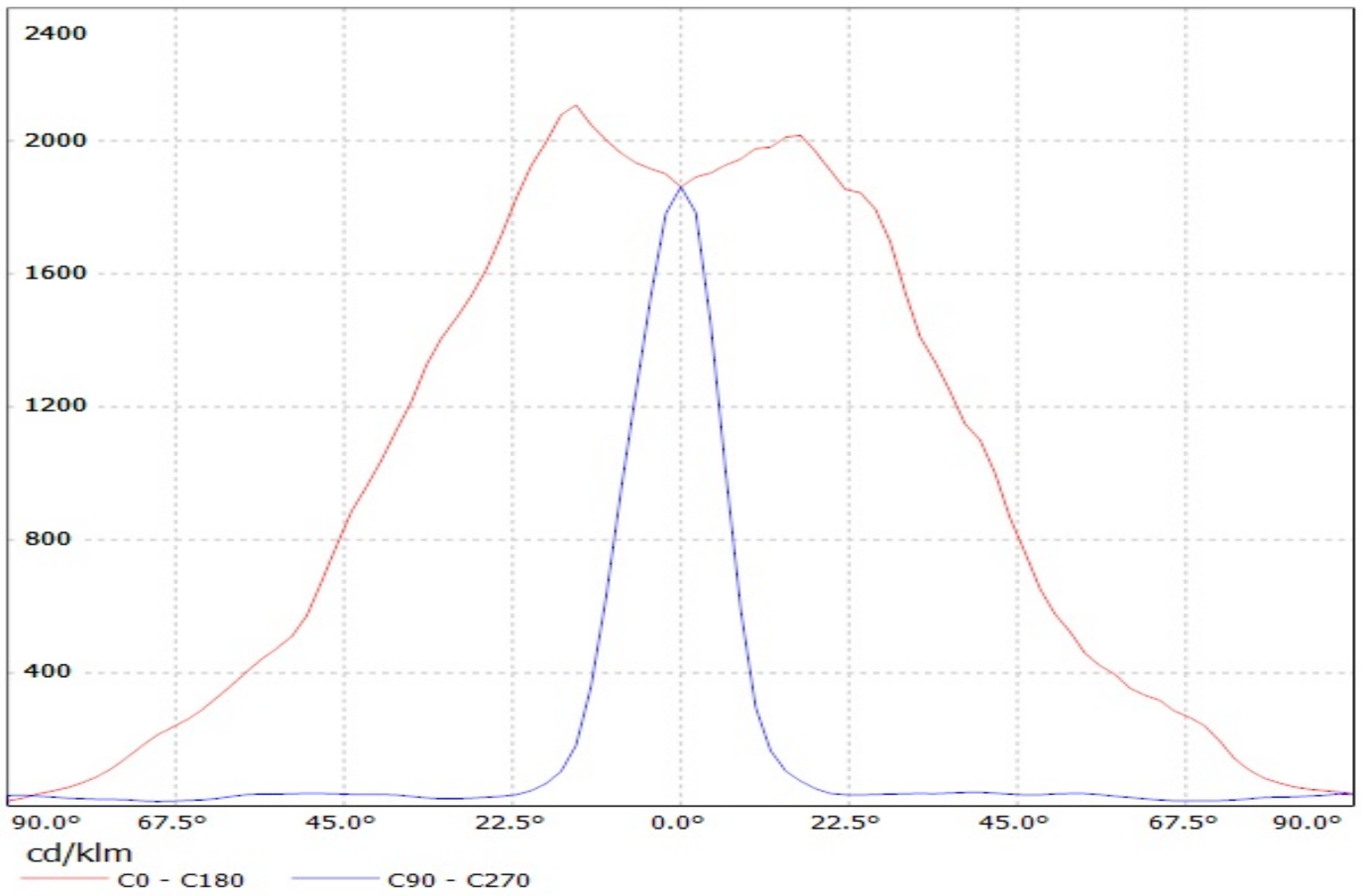
1

This drawing is our property. It can't be reproduced or communicated without our written agreement.		 Ledil Oy Salorankatu 10 FIN 24240 SALO Finland	
DRAWING TITLE		Datasheet Flare-Mini-A Assy	
DRAWN BY pv	DATE 03.04.2012	SIZE A4	DRAWING NUMBER CA12764
CHECKED BY pl	DATE 02.04.2012	SCALE 2:1	REV 1
DESIGNED BY pl	DATE 27.02.2012	WEIGHT (g)	SHEET 1/1

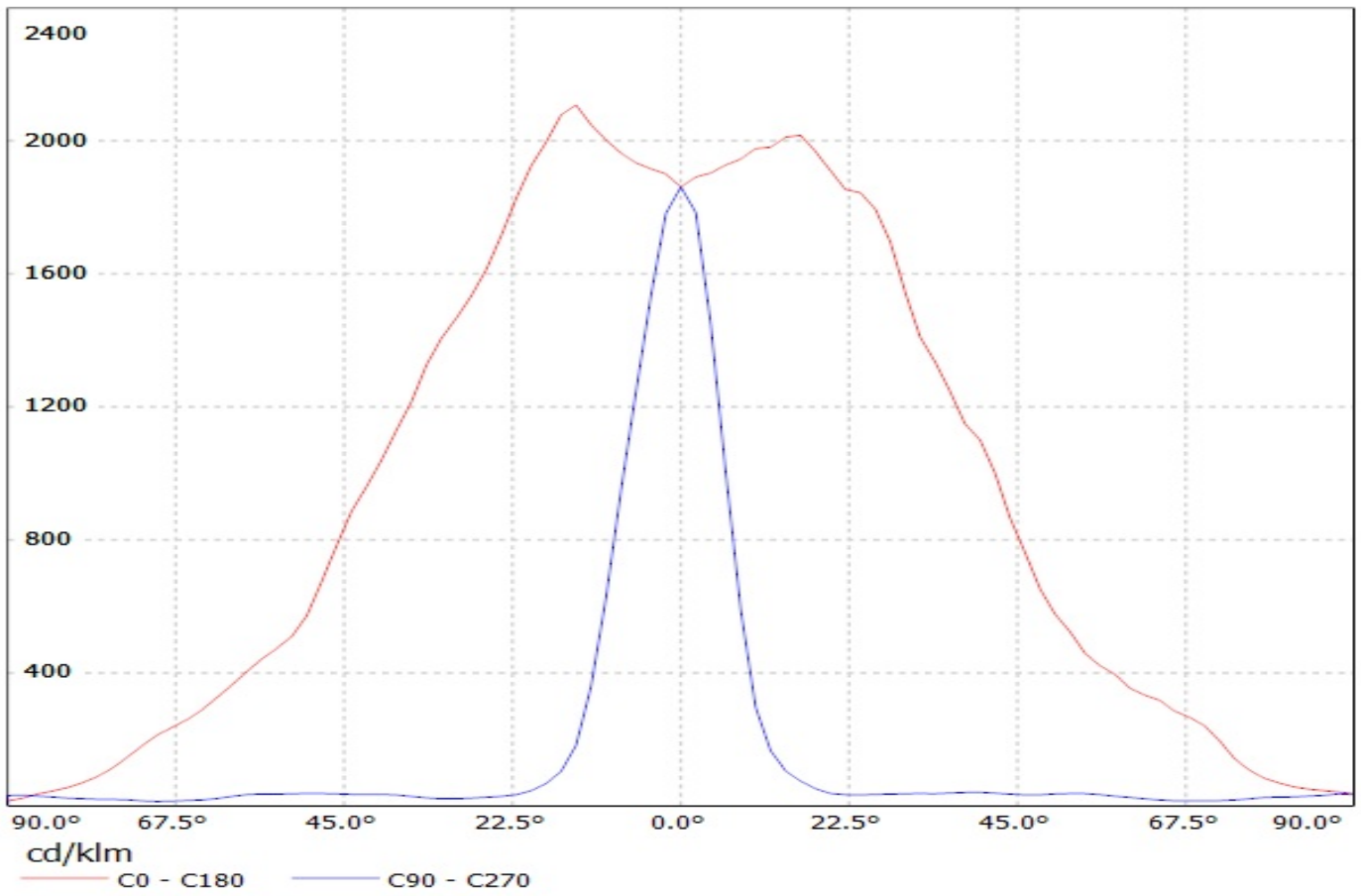
1

D A

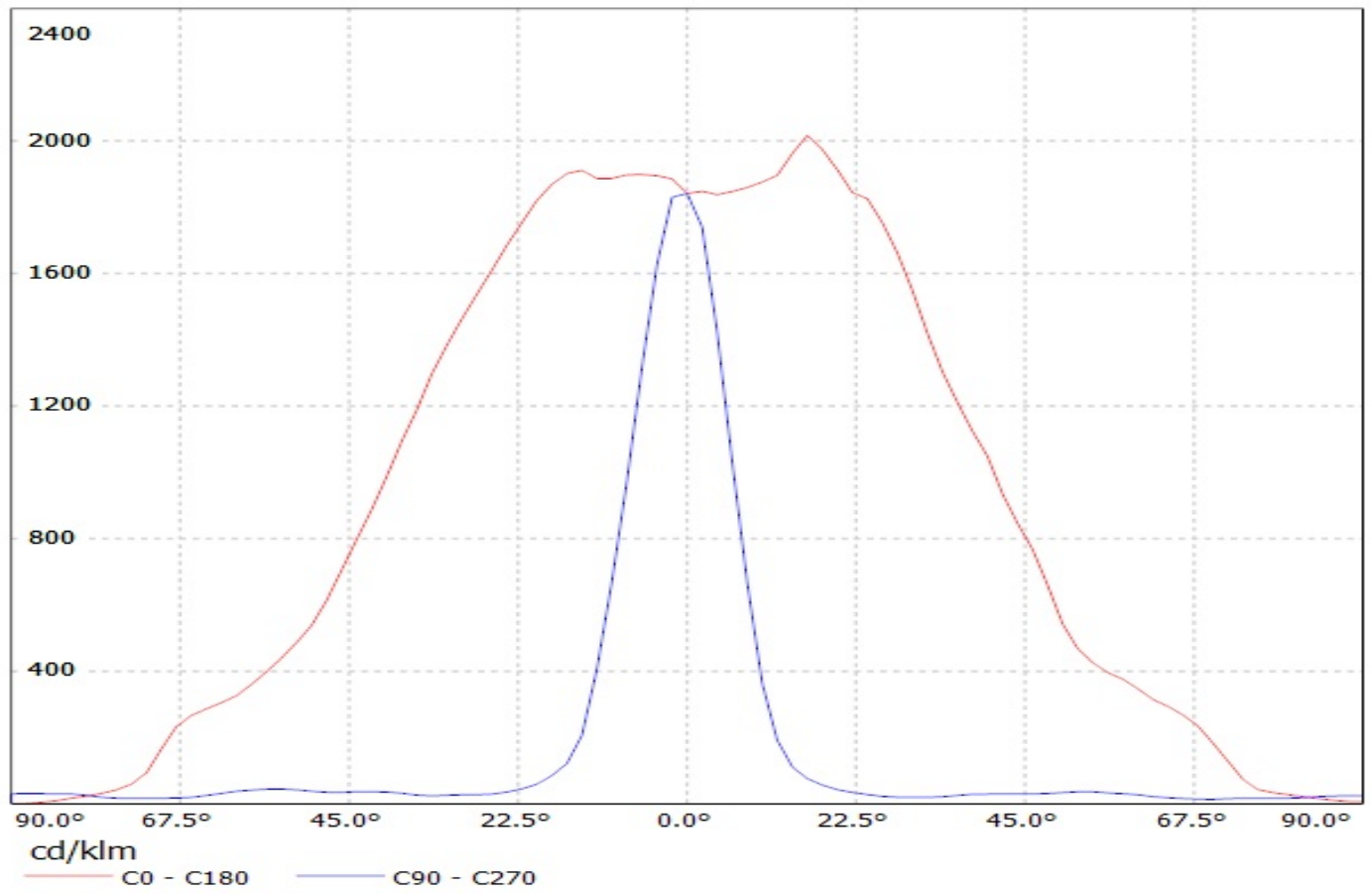
Luminaire: Ledil Oy CA12764/CA12838_FLARE-MINI-A (Osram OSL80 84lm @ 250mA) Efficiency=93%
Lamps: 1 x Osram OSL80 84lm @ 250mA



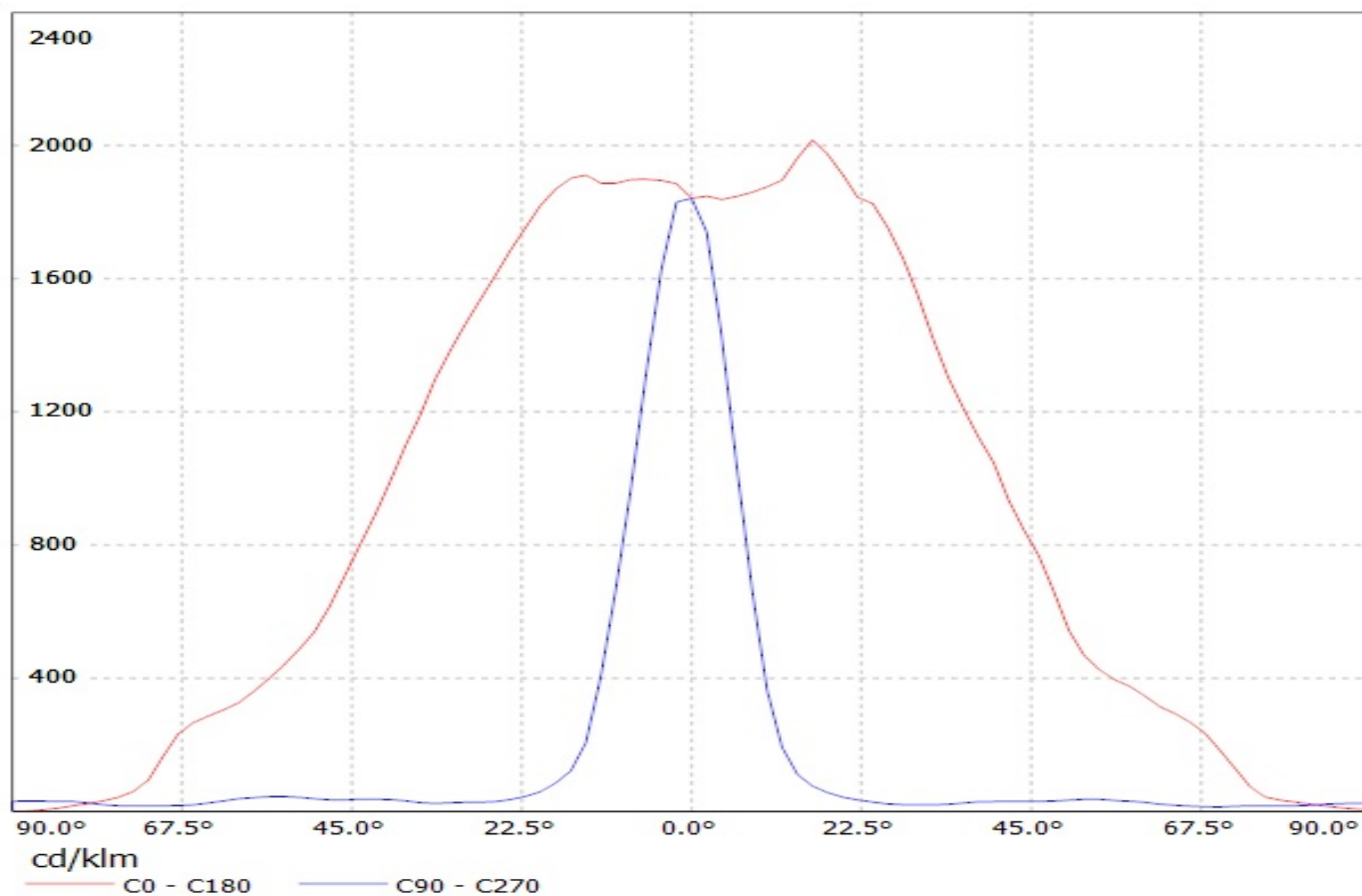
Luminaire: Ledil Oy CA12764/CA12838_FLARE-MINI-A (Osram OSL80 84lm @ 250mA) Efficiency=93%
Lamps: 1 x Osram OSL80 84lm @ 250mA



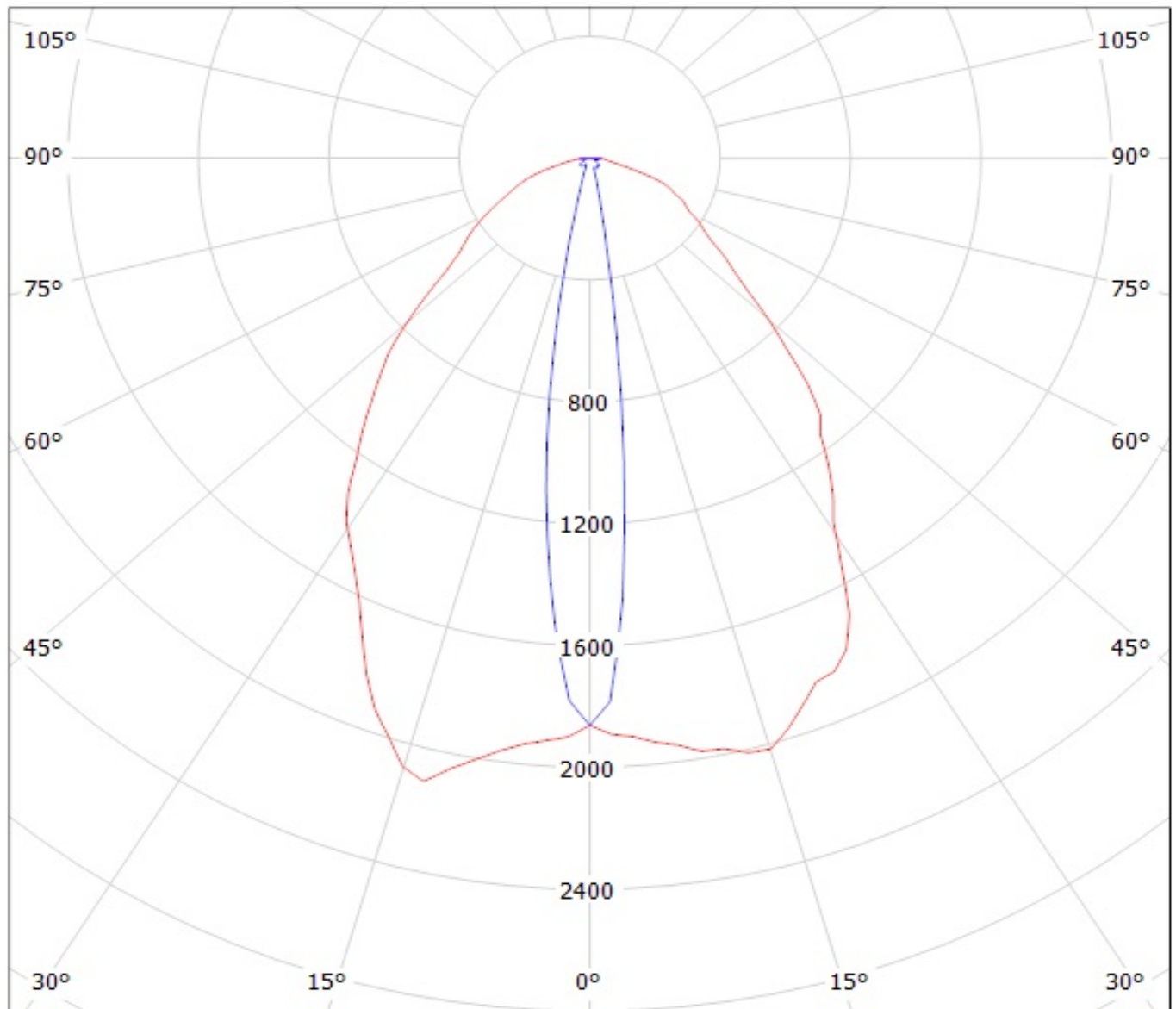
Luminaire: Ledil Oy C12763/C12837_FLARE-MINI-A (Osram OSL80 84lm @ 250mA) Efficiency=93%
Lamps: 1 x Osram OSL80 84lm @ 250mA



Luminaire: Ledil Oy C12763/C12837_FLARE-MINI-A (Osram OSL80 84lm @ 250mA) Efficiency=93%
Lamps: 1 x Osram OSL80 84lm @ 250mA



Luminaire: Ledil Oy CA12764/CA12838_FLARE-MINI-A (Osram OSL80 84lm @ 250mA) Efficiency=93%
Lamps: 1 x Osram OSL80 84lm @ 250mA

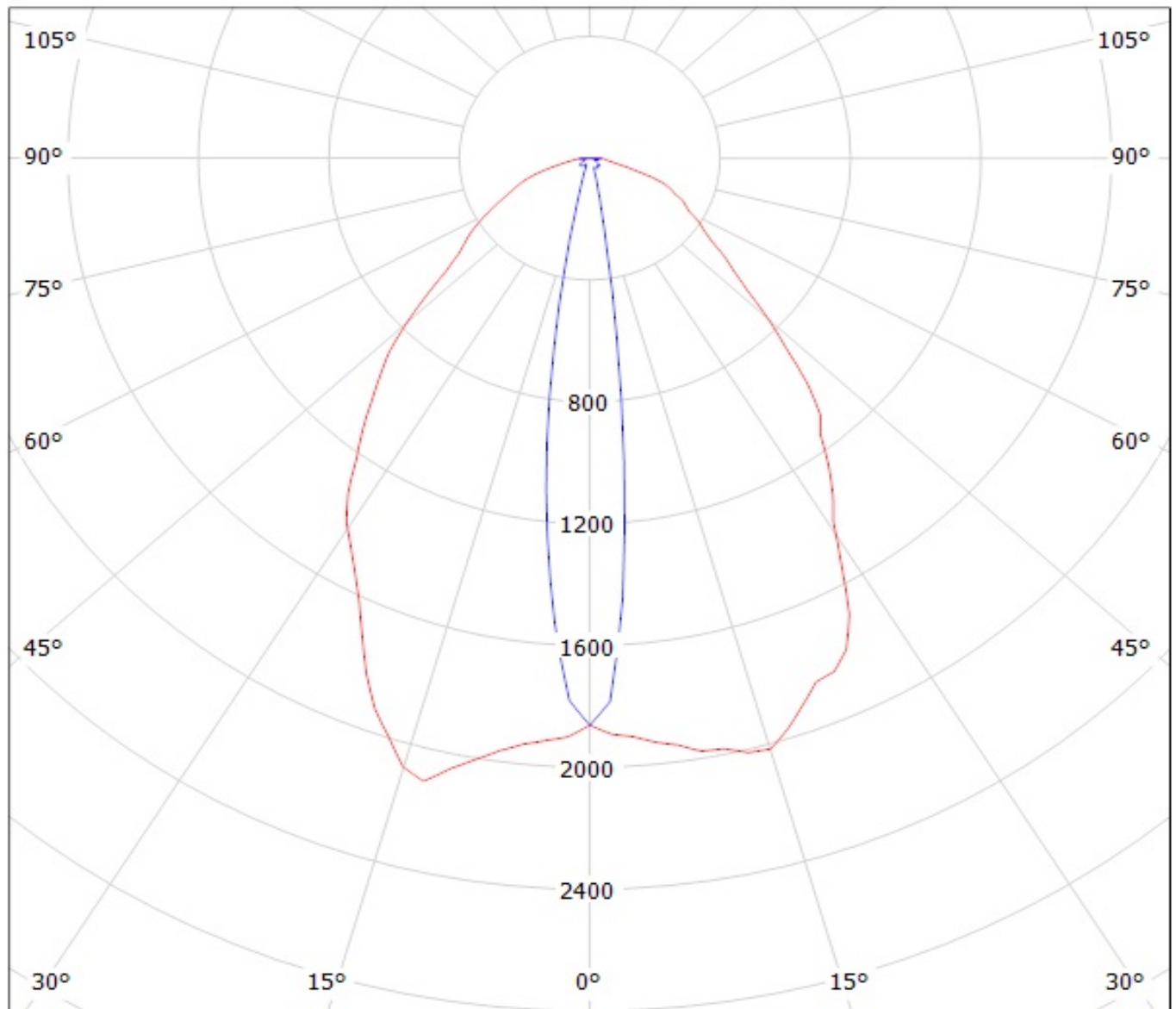


cd/klm

— C0 - C180

— C90 - C270

Luminaire: Ledil Oy CA12764/CA12838_FLARE-MINI-A (Osram OSL80 84lm @ 250mA) Efficiency=93%
Lamps: 1 x Osram OSL80 84lm @ 250mA

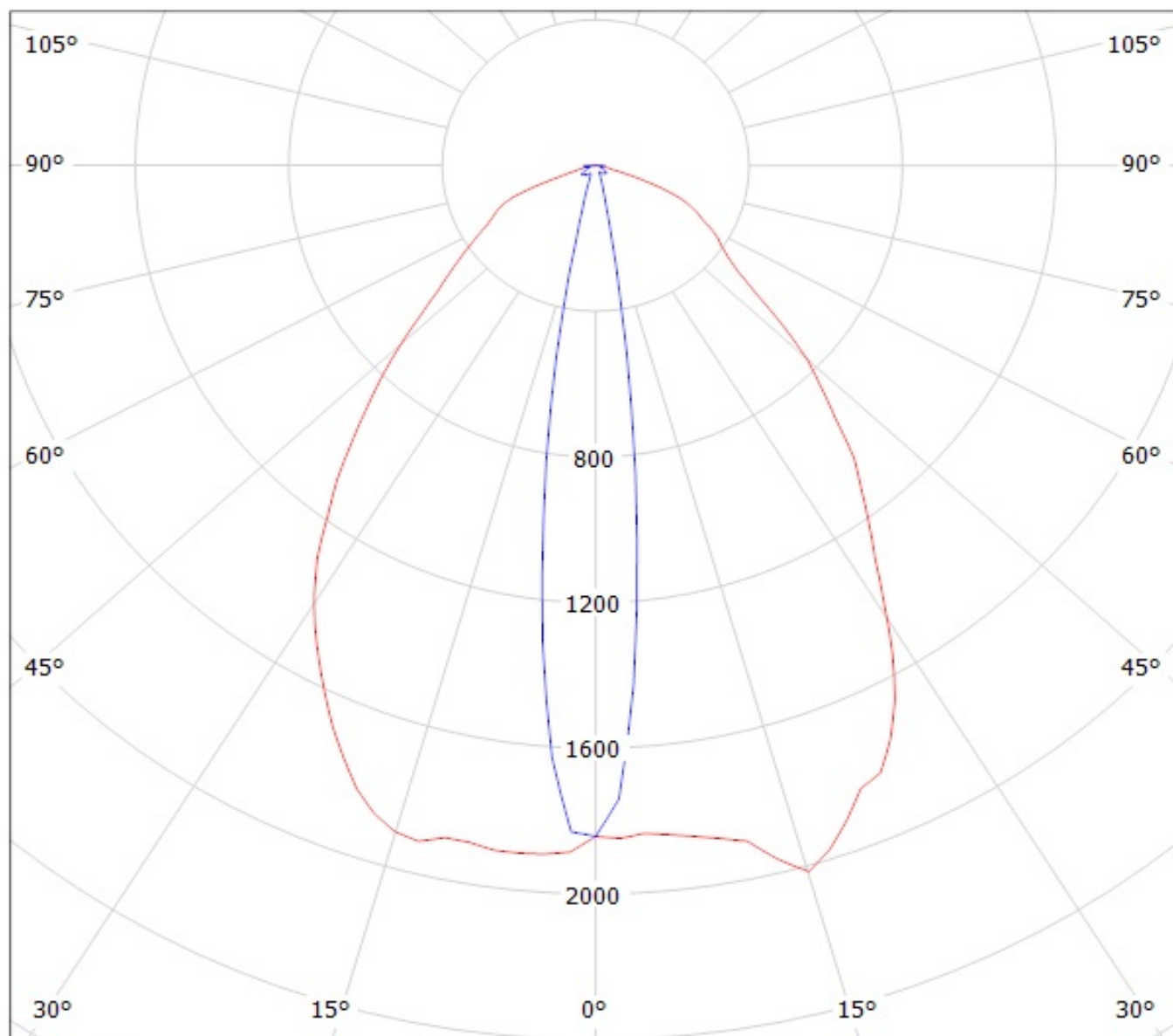


cd/klm

— C0 - C180

— C90 - C270

Luminaire: Ledil Oy C12763/C12837_FLARE-MINI-A (Osram OSL80 84lm @ 250mA) Efficiency=93%
Lamps: 1 x Osram OSL80 84lm @ 250mA

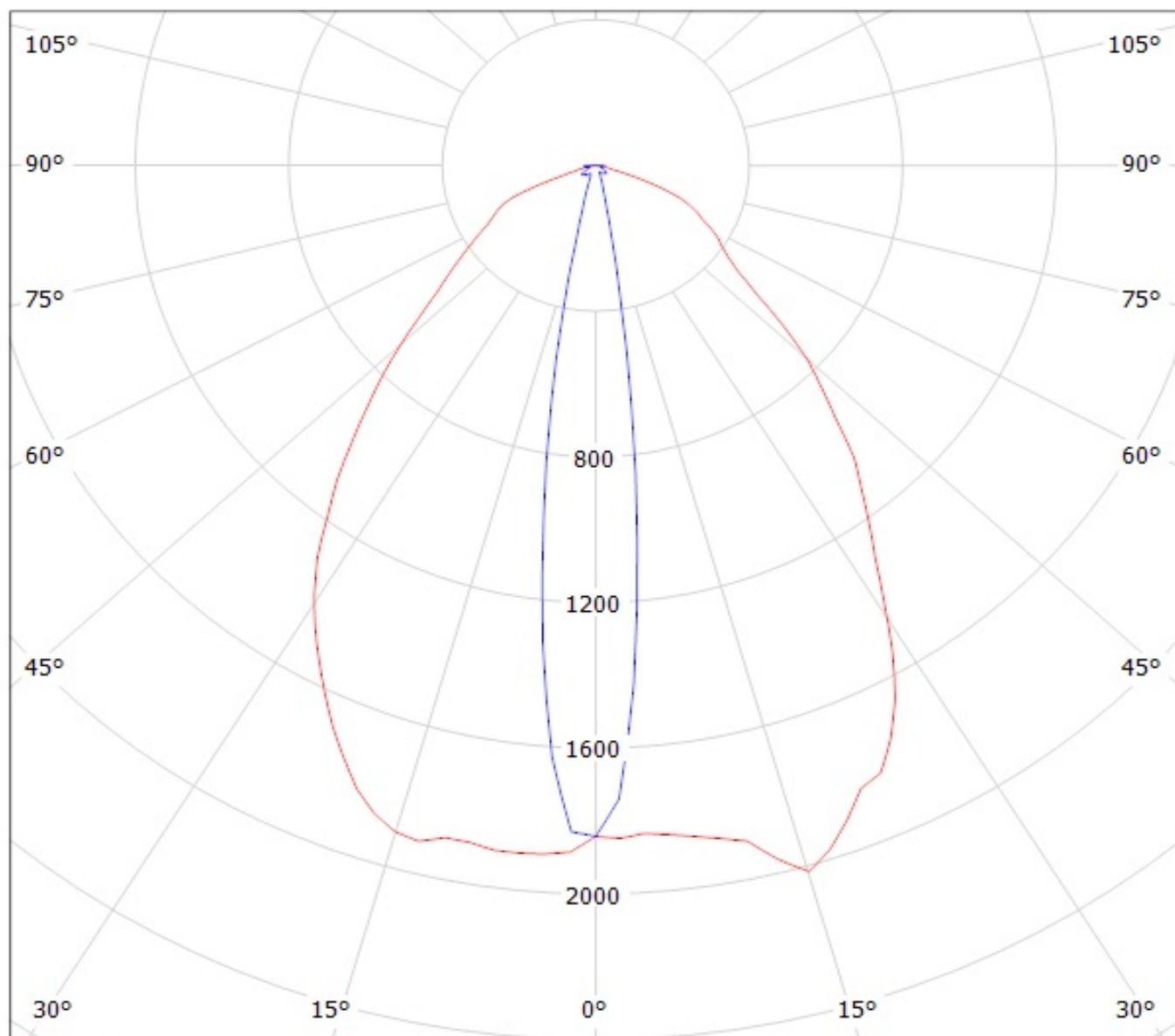


cd/klm

— C0 - C180

— C90 - C270

Luminaire: Ledil Oy C12763/C12837_FLARE-MINI-A (Osram OSL80 84lm @ 250mA) Efficiency=93%
Lamps: 1 x Osram OSL80 84lm @ 250mA



cd/klm

— C0 - C180

— C90 - C270