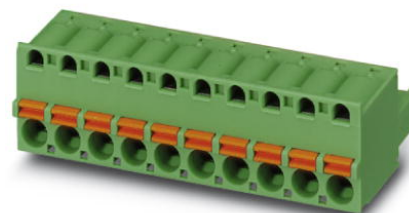


FKC 2,5/11-ST

Order No.: 1910445

The figure shows a 10-position version of the product

<http://eshop.phoenixcontact.de/phoenix/treeViewClick.do?UID=1910445>Plug component, Nominal current: 12 A, Rated voltage (III/2): 320 V,
Pitch: 5 mm, Color: green, Metal surface: Sn

Commercial data

GTIN (EAN)	4017918175221
sales group	E111
Pack	50 pcs.
Customs tariff	85366990
Weight/Piece	0.01963 KG
Catalog page information	Page 210 (CC-2009)

Product notes

WEEE/RoHS-compliant since:
01/01/2003

<http://www.download.phoenixcontact.com>
Please note that the data given here has been taken from the online catalog. For comprehensive information and data, please refer to the user documentation. The General Terms and Conditions of Use apply to Internet downloads.

Technical data

Dimensions / positions

Pitch	5 mm
Dimension a	50 mm
Number of positions	11

Technical data

Insulating material group	I
Rated surge voltage (III/3)	4 kV
Rated surge voltage (III/2)	4 kV
Rated surge voltage (II/2)	4 kV
Rated voltage (III/2)	320 V
Rated voltage (II/2)	630 V
Connection in acc. with standard	EN-VDE
Nominal current I_N	12 A
Nominal voltage U_N	250 V
Nominal cross section	2.5 mm ²
Maximum load current	12 A
Insulating material	PA
Inflammability class acc. to UL 94	V0
Internal cylindrical gage	A2
Stripping length	10 mm
Nominal voltage, UL/CUL Use Group B	250 V
Nominal current, UL/CUL Use Group B	10 A
Nominal voltage, UL/CUL Use Group D	300 V
Nominal current, UL/CUL Use Group D	10 A

Connection data

Conductor cross section solid min.	0.2 mm ²
Conductor cross section solid max.	2.5 mm ²
Conductor cross section stranded min.	0.2 mm ²
Conductor cross section stranded max.	2.5 mm ²
Conductor cross section stranded, with ferrule without plastic sleeve min.	0.25 mm ²
Conductor cross section stranded, with ferrule without plastic sleeve max.	2.5 mm ²
Conductor cross section stranded, with ferrule with plastic sleeve min.	0.25 mm ²
Conductor cross section stranded, with ferrule with plastic sleeve max.	2.5 mm ²
Conductor cross section AWG/kcmil min.	24
Conductor cross section AWG/kcmil max	12
2 conductors with same cross section, stranded, TWIN ferrules with plastic sleeve, min.	0.5 mm ²

2 conductors with same cross section, stranded, TWIN ferrules with plastic sleeve, max.	1.5 mm ²
Minimum AWG according to UL/CUL	26
Maximum AWG according to UL/CUL	12

Certificates / Approvals



Certification CB, CSA, CUL, GOST, UL, VDE-PZI

CSA

Nominal voltage U _N	300 V
Nominal current I _N	10 A
AWG/kcmil	24-12

CUL

Nominal voltage U _N	300 V
Nominal current I _N	10 A
AWG/kcmil	26-12

UL

Nominal voltage U _N	300 V
Nominal current I _N	10 A
AWG/kcmil	26-12

Accessories

Item	Designation	Description
Assembly		
1876880	STZ 8-FKC-5,08	Strain relief for snapping into the latching chambers of the plug components, 8-pos.
1876877	STZ 4-FKC-5,08	Strain relief for snapping into the latching chambers of the plugs, 4-pos.

Marking

0804183	SK 5/3,8:FORTL.ZAHLEN	Marker card, printed horizontally, self-adhesive, 12 identical decades marked 1-10, 11-20 etc. up to 91-(99)100, sufficient for 120 terminal blocks
---------	-----------------------	---

Plug/Adapter

1734634	CP-MSTB	Keying profile, is inserted into the slot on the plug or inverted header, red insulating material
0201744	MPS-MT	Metal part
0201647	RPS	Reducing plug, Color: gray

Tools

1205053	SZS 0,6X3,5	Screwdriver, bladed, matches all screw terminal blocks up to 4.0 mm ² connection cross section, blade: 0.6 x 3.5 mm, without VDE approval
---------	-------------	--

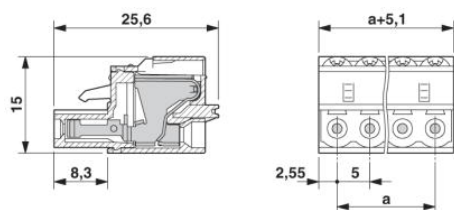
Additional products

Item	Designation	Description
General		
0707183	DFK-MSTB 2,5/11-G	Plug component, Nominal current: 12 A, Rated voltage (III/2): 320 V, Pitch: 5 mm, Color: green, Metal surface: Sn, Assembly: Direct mounting, Accessory order no. 5030172 can only be used in conjunction with MSTB 2,5/...ST and MSTBT 2,5/...ST.
1899935	EMSTBA 2,5/11-G	Header, Nominal current: 12 A, Rated voltage (III/2): 320 V, Pitch: 5 mm, Color: green, Metal surface: Sn, Assembly: Press-in
1914946	EMSTBVA 2,5/11-G	Header, Nominal current: 12 A, Rated voltage (III/2): 320 V, Pitch: 5 mm, Color: green, Metal surface: Sn, Assembly: Press-in
1762787	MDSTB 2,5/11-G1	Header, Nominal current: 10 A, Rated voltage (III/2): 320 V, Pitch: 5 mm, Color: green, Metal surface: Sn, Assembly: Soldering, In combination with MVSTB or FKCV plug components, both an MVSTBW (or FKCVW) and an MVSTBR plug (or FKCVR) must be used. Combination with TMSTBP plug components is not possible!
1846603	MDSTBA 2,5/11-G	Header, Nominal current: 10 A, Rated voltage (III/2): 320 V, Pitch: 5 mm, Color: green, Metal surface: Sn, Assembly: Soldering, The article can be aligned to create different nos. of positions! In combination with MVSTB or FKCV plug components, both an MVSTBW (or FKCVW) and an MVSTBR plug (or FKCVR) must be used. Combination with TMSTBP plug components is not possible!
1762936	MDSTBV 2,5/11-G1	Header, Nominal current: 10 A, Rated voltage (III/2): 320 V, Pitch: 5 mm, Color: green, Metal surface: Sn, Assembly: Soldering, In combination with MVSTB or FKCV plug components, both an MVSTBW (or FKCVW) and an MVSTBR plug (or FKCVR) must be used. Combination with TMSTBP plug components is not possible!

1845879	MDSTBVA 2,5/11-G	Header, Nominal current: 10 A, Rated voltage (III/2): 320 V, Pitch: 5 mm, Color: green, Metal surface: Sn, Assembly: Soldering, The article can be aligned to create different nos. of positions! In combination with MVSTB or FKCV plug components, both an MVSTBW (or FKCVW) and an MVSTBR plug (or FKCVR) must be used. Combination with TMSTBP plug components is not possible!
1754614	MSTB 2,5/11-G	Header, Nominal current: 12 A, Rated voltage (III/2): 320 V, Pitch: 5 mm, Color: green, Metal surface: Sn, Assembly: Soldering
1768273	MSTB 2,5/11-G-LA	Header, Nominal current: 12 A, Rated voltage (III/2): 320 V, Pitch: 5 mm, Assembly: Soldering
1757556	MSTBA 2,5/11-G	Header, Nominal current: 12 A, Rated voltage (III/2): 320 V, Pitch: 5 mm, Color: green, Metal surface: Sn, Assembly: Soldering
1770575	MSTBA 2,5/11-G-LA	Header, Nominal current: 12 A, Rated voltage (III/2): 320 V, Pitch: 5 mm, Assembly: Soldering
1753615	MSTBV 2,5/11-G	Header, Nominal current: 12 A, Rated voltage (III/2): 320 V, Pitch: 5 mm, Color: green, Metal surface: Sn, Assembly: Soldering
1755590	MSTBVA 2,5/11-G	Header, Nominal current: 12 A, Rated voltage (III/2): 320 V, Pitch: 5 mm, Color: green, Metal surface: Sn, Assembly: Soldering
1736027	MSTBW 2,5/11-G	Header, Nominal current: 12 A, Rated voltage (III/2): 320 V, Pitch: 5 mm, Color: green, Metal surface: Sn, Assembly: Soldering
1769324	SMSTB 2,5/11-G	Header, Nominal current: 12 A, Rated voltage (III/2): 320 V, Pitch: 5 mm, Color: green, Metal surface: Sn, Assembly: Soldering
1769890	SMSTBA 2,5/11-G	Header, Nominal current: 12 A, Rated voltage (III/2): 320 V, Pitch: 5 mm, Color: green, Metal surface: Sn, Assembly: Soldering

Diagrams/Drawings

Dimensioned drawing



Address

PHOENIX CONTACT Inc., USA
586 Fulling Mill Road
Middletown, PA 17057, USA
Phone (800) 888-7388
Fax (717) 944-1625
<http://www.phoenixcon.com>



© 2010 Phoenix Contact
Technical modifications reserved;